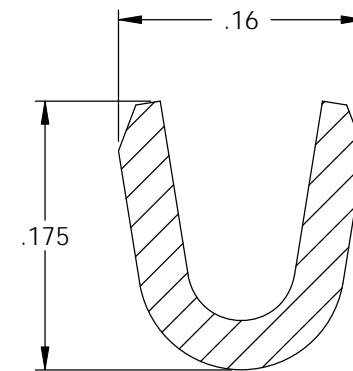
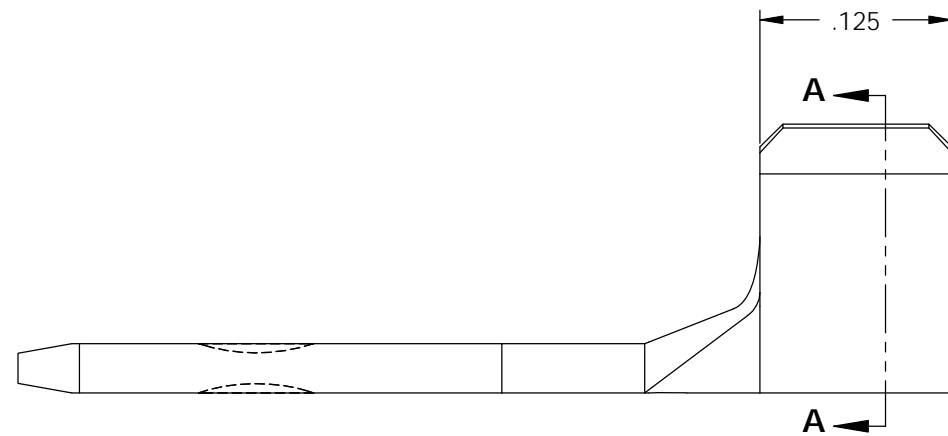
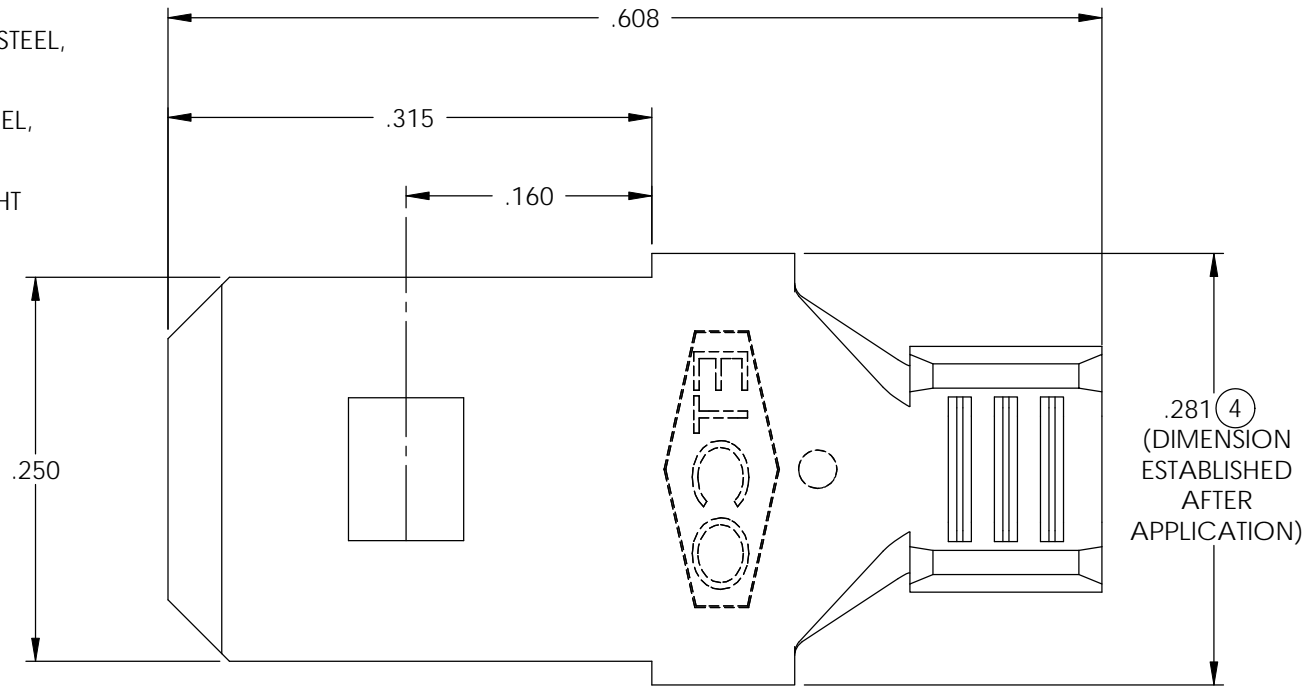


NOTE:

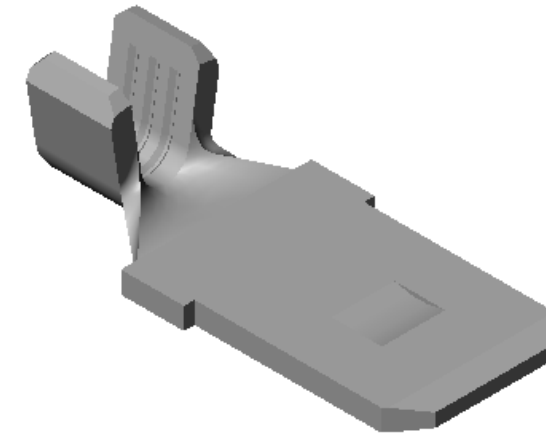
- 1.) MAT'L: .032 THK., BRASS, #2 TEMPER (HALF HARD), PER ETCO METAL CODE NO. 00770.
- 2.) MAT'L: .032 THK., PRE-TINNED BRASS, #2 TEMPER (HALF HARD), PER ETCO METAL CODE NO. 01830.
- 3.) MAT'L: .032 THK., POST-SILVER PLATED BRASS, #2 TEMPER (HALF HARD), PER ETCO METAL CODE NO. 00770.
- 4.) MAT'L: .032 THK., COPPER COATED STEEL, #4 TEMPER (CQ HARD), PER ETCO METAL CODE NO. 02835.
- 5.) MAT'L: .032 THK., NICKEL PLATED STEEL, #2 TEMPER (HALF HARD), PER ETCO METAL CODE NO. 03313.
- 6.) PARTS MAY BE COATED WITH A LIGHT FILM OF LUBRICATION USED IN THE MANUFACTURING PROCESS.
- 7.) WIRE RANGE: 14-18 AWG.



SECTION A-A  
SCALE 8 : 1

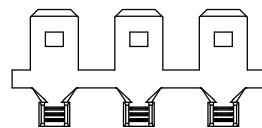
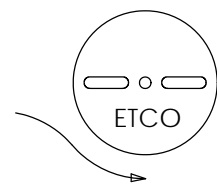
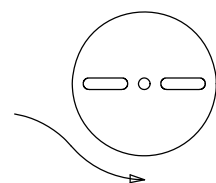
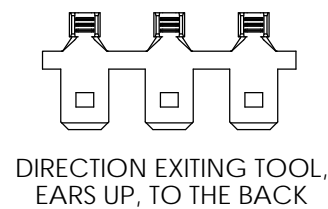
P/C	DESCRIPTION	MAT'L	
07960	M210-HB	NOTE 1	X
07970	M210-THB	NOTE 2	X
07972	M210-HB-SPAF	NOTE 3	X
07973	M210-CCS	NOTE 4	
07974	M210-NPS	NOTE 5	

Rev.	Description of Change/ SCN#	Date
1	REDRAWN ON SOLIDWORKS NO CHANGES SCJ ORG.ENG.DWG.DATE: 7-19-61	2-8-06
2	SCN# 140145 SCJ	3-23-07
3	COMPLETED P/C LIST SCJ	7-25-08
4	ECR #790 JMR	8-03-11



# UNCONTROLLED COPY

 THIRD ANGLE PROJECTION TOLERANCES UNLESS OTHERWISE SPECIFIED INCHES: .XX - ±.030 .XXX - ±.015 ANGLES: ±5°	TOOL NO. <b>0653</b>	Title: <b>.032 X .250 MALE TAB</b>	
		DO NOT SCALE DWG. Drawn By: S.JOHNSON Date: 2-8-06	Chk'd/App'd By: Scale: 8X Size: B
		Dwg. No.: <b>M210 cust</b>	



DIRECTION TOWARD APPLICATOR,  
EARS UP, TO THE FRONT