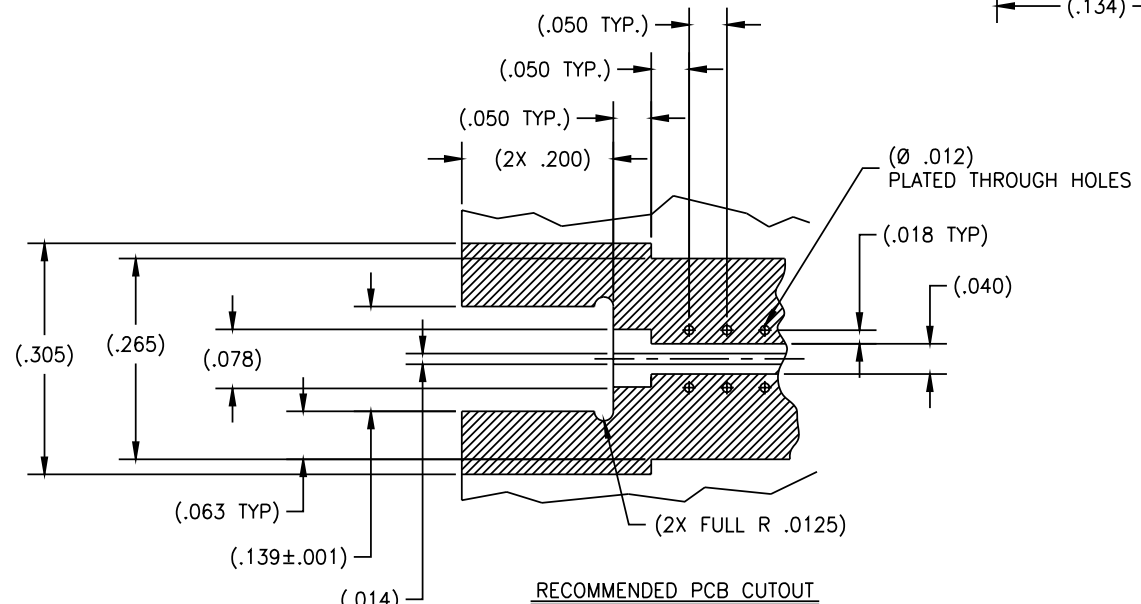
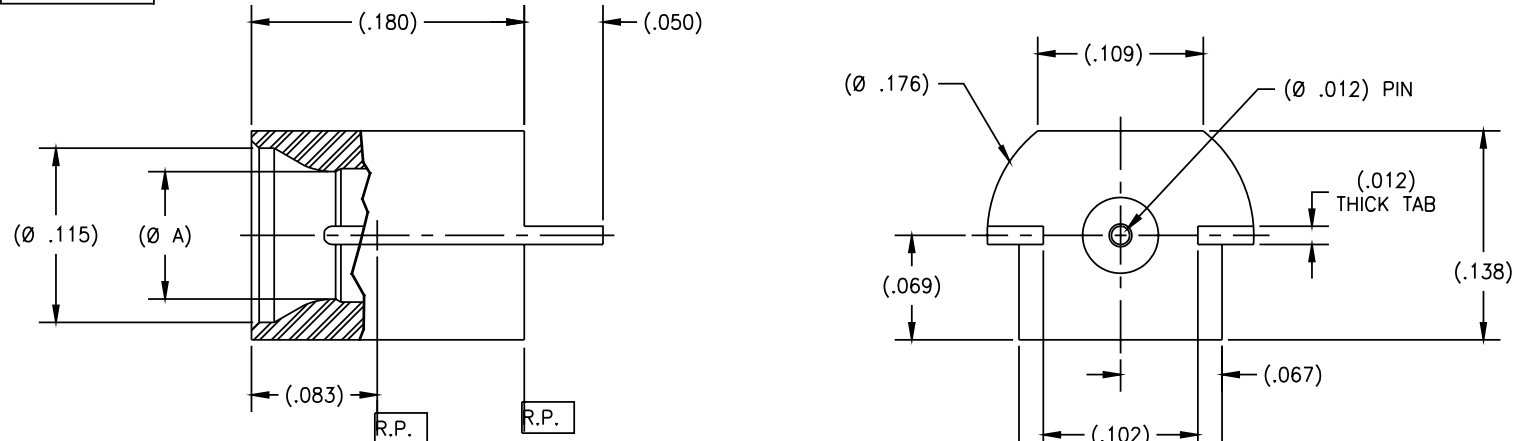


P/N	APPLICABLE NOTE(S)	(Ø A)	INTERFACE
-1CC	1,2	(.085)	DETENT
-2CC	1,2	(.088)	SMOOTH BORE

REVISIONS				DATE	BY
ZONE	REV	DESCRIPTION			
-	-	-	-	-	-



DRAWING NO. P351 REV. -

- NOTE(S):
- MATERIAL:
 - BODY: BeCu ALLOY C173 PER ASTM B-196.
 - CONTACT: BeCu ALLOY PER ASTM B-196
 - INSULATOR: PTFE PER ASTM D-1710.
 - FINISH:
 - BODY & CONTACT: GOLD PLATE PER ASTM B-488 OVER NICKEL PLATE PER AMS-QQ-N-290
 - INSULATOR: NONE.

RECOMMENDED PCB CUTOUT
SCALE: 8/1

APPLICABLE TENSOLITE DOCUMENTS			TOLERANCES AND NOTES EXCEPT AS NOTED		SEE NOTE(S)	SEE NOTE(S)	SEE NOTE(S)
WORK STD	PROD INST	ASSY INST	DIMENSIONS ARE IN INCHES. LINEAR .XXX ±.016 ANGLUAR ± 1/2° FRACTION ± 1/32		MATERIAL	SIZE	PROCUREMENT
NA	NA	NA	1. MACHINE FINISH: \sqrt{R} 2. BREAK ALL SHARP EDGES .003 MAX.		NEXT ASSY	Tensolite	HIGH PERFORMANCE CABLES & INTERCONNECT SYSTEMS Long Beach, California 90815
NOTICE			3. MACHINED FILLETS .005 MAX. 4. MACHINED SURFACES SQUARE TO RESPECTIVE AXIS WITHIN .005 INCHES PER INCH. 5. MACHINED DIAMETERS CONCENTRIC WITHIN .002 I.J.R. 6. DIMENSIONS TO BE MET BEFORE PLATING. 7. CHAMFER ALL THREADS 45°. 8. THREADS PER H-28 9. REMOVE FRAYED EDGES ON TEFLON. 10. REMOVE ALL BURRS.		APPROVAL INITIALS	DATE	TITLE
THIS DRAWING EMBODIES A CONFIDENTIAL PROPRIETARY DESIGN ORIGINATED BY TENSOLITE COMPANY AND ALL DESIGN, MANUFACTURING, REPRODUCTION, USE AND SALE RIGHTS REGARDING THE SAME ARE EXPRESSLY RESERVED. IT IS SUBMITTED UNDER A CONFIDENTIAL RELATIONSHIP FOR A SPECIFIED PURPOSE AND THE RECIPIENT AGREES BY ACCEPTING THIS DRAWING NOT TO SUPPLY OR DISCLOSE ANY INFORMATION REGARDING IT TO ANY UNAUTHORIZED PERSON TO INCORPORATE IN OTHER PRODUCTS ANY SPECIAL FEATURES PECULIAR TO THIS DESIGN. ALL PATENT RIGHTS HERETO ARE EXPRESSLY RESERVED BY TENSOLITE COMPANY, LONG BEACH, CALIFORNIA 90815.			DRAWN BY: DKN 09.14.04		QUALITY	SSMP MALE PCB EDGE MOUNT TO STRAIGHT TERMINATION	
			ENGINEERING: ATV 11.04.04		SCALE	SUB-DIRECTORY FILENAME	SHEET 1 of 1
					SIZE	C 30990	DRAWING NO. P351