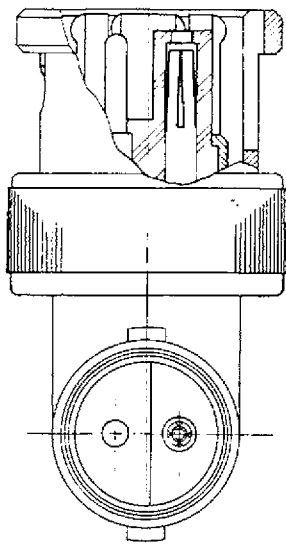
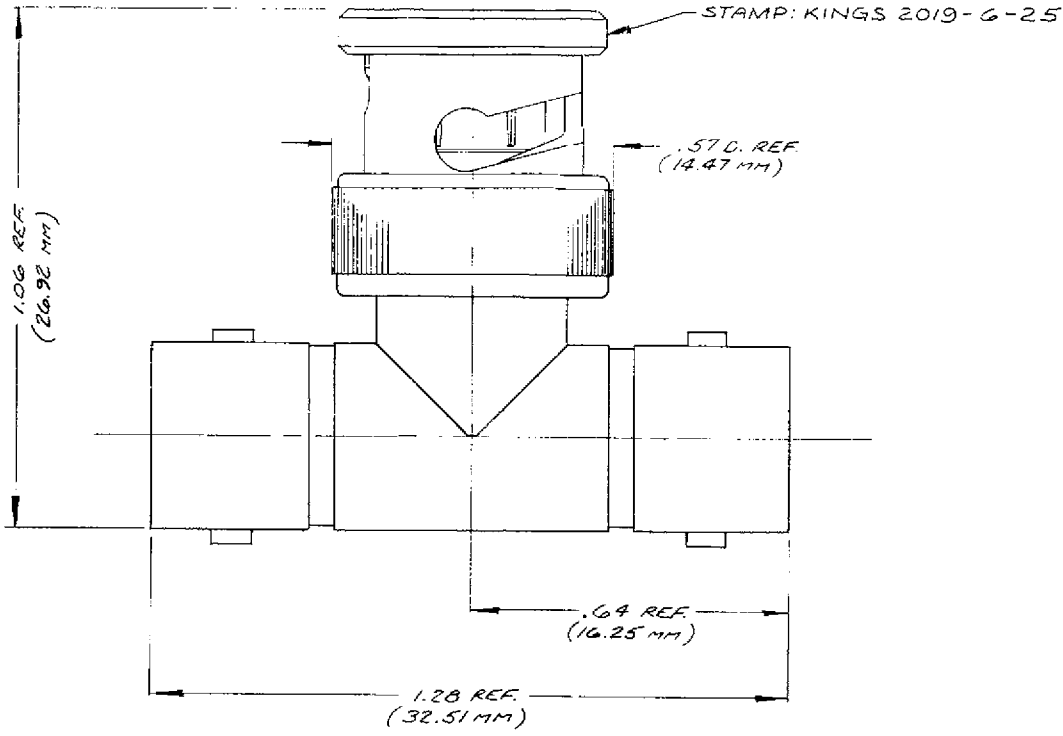


DASH NO. M CODE MADE FROM



2019-6-25

S-D

REVISIONS	
ISSUE	CHANGES
1	CN 26004 C SD 5 APR 84
2	CN 26909 C SD 22 FEB 85
3	CN 31040 A M.Z.B. 3 AUG. 89
4	CN 38253 BDH 15MAR01

S-D

SCALE: 4:1	
APPROX SURFACE AREA	
WAS: E-12033	
USED ON:	
REF	
T/BNC TEE ADAPTER F-M-F	
DRAWN: GL	DATE: 5 OCT 83
APPR:	DATE:

- UNLESS OTHERWISE SPECIFIED:
- | | |
|--|--|
| 1. TOLERANCES: FRACTIONS & 2 PLACE DECIMALS ± .010 | 2. REMOVE ALL BURRS, BREAK SHARP EDGES .005 MAX. |
| 3 PLACE DECIMALS ± .004 | 3. NO FILLETS PERMITTED. |
| ANGLES ± 0°30' | 4. SURFACE ROUGHNESS 63 MICROINCHES RMS MAX. |
| T. I. R. CONCENTRICITY OF ANY 2 DIAMETERS MAY NOT EXCEED HALF THE SUM OF THEIR TOLERANCES. | 5. ALL DIMENSIONS PRIOR TO PLATING. |
| | 6. ALL PLATING IN ACCORDANCE WITH KER 10004. |

S-D

2019-6-25