

SMD TRIGGER DEVICES (PNPN)

DESCRIPTION

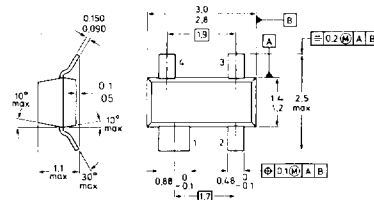
■ Philips Components trigger devices are planar P-N-P-N devices which can be used as programmable unijunction transistors (PUTs) or silicon controlled switches to switch relay and lamp drivers, sense temperature changes, and trigger thyristors and triacs. Applications include motor control, oscillators, timers, and pulse shapers.

FEATURES

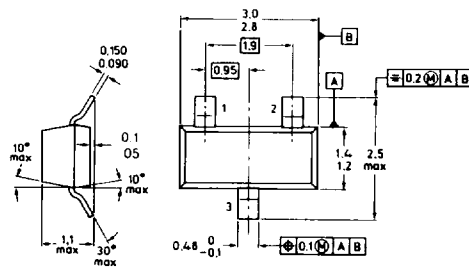
- 70V gate-anode voltage
- Continuous anode current up to 175 mA
- Surge currents as high as 3A
- Compatible with wave or reflow soldering

MECHANICAL DATA

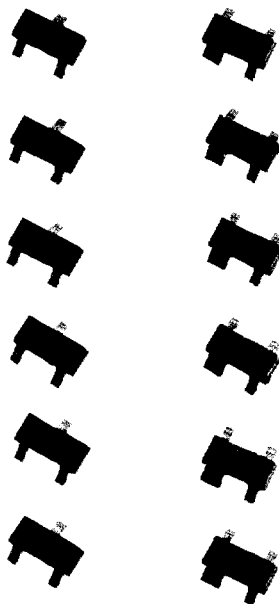
(Dimensions in mm)



SOT-143 TOP VIEW



SOT-23 TOP VIEW

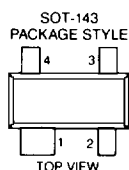
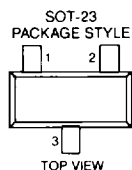


SMD TRIGGER DEVICES (PNPN)

ELECTRICAL SPECIFICATIONS

TYPE	PACKAGE	V _{GA} max V	I _A max mA	I _p μA	I _v μA	PINOUT
BRY61	SOT-23	70	175	5/1	30/50	N
BRY62	SOT-143	70	175	—	—	P

PINOUT DIAGRAMS



PINOUT N: SOT-23	PIN 1 K	PIN 2 A	PIN 3 ANODE GATE	PIN 4 —
PINOUT P: SOT-143	ANODE GATE	A	K	CATHODE GATE

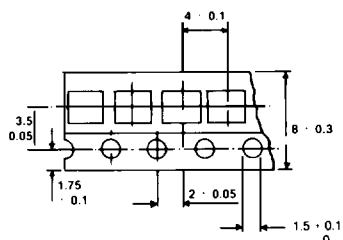
MARKING CODES

Type No.	Code
BRY61	A5
BRY62	A51

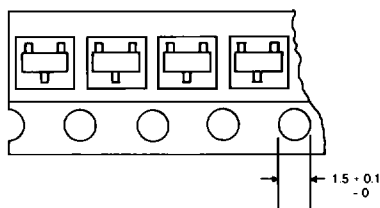
TAPE AND REEL SPECIFICATIONS

(Dimensions in mm)

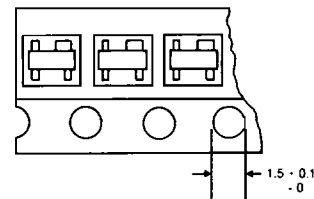
SM Package	Devices per reel	Reel Size (in)	Tape Width (mm)	Ordering Suffix
SOT-23	3K	7	8	TRL
	10K	13	8	TRL 13
SOT-143	3K	7	8	TRL
	10K	13	8	TRL 13



**SOT-23 and SOT-143
TAPE DIMENSIONS**



**SOT-23
ORIENTATION**



**SOT-143
ORIENTATION**