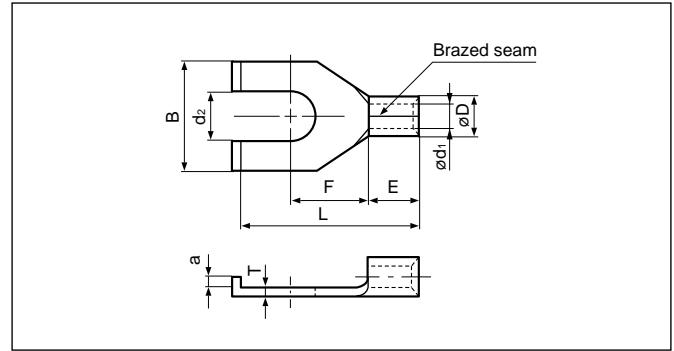


FLANGED SPADE TONGUE (B type) Non-insulated

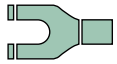


File No.: E42024 LR20812

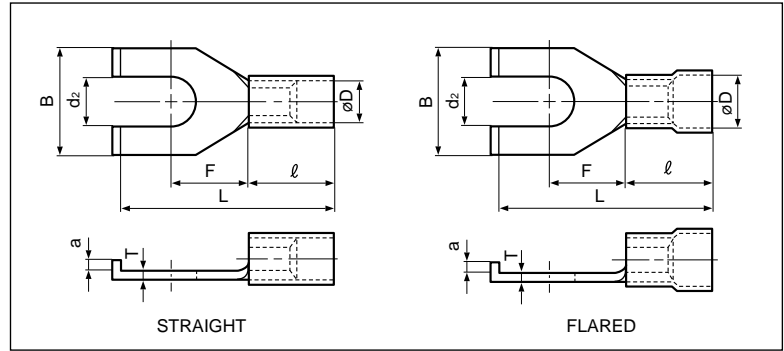
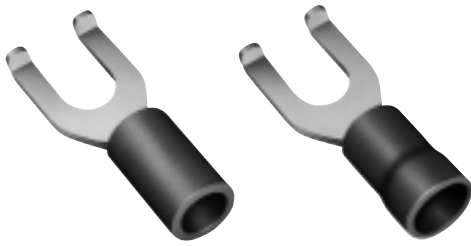
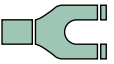
Applicable Wire AWG#(mm ²)	Stud size		Part No.	Standard	Dimensions mm (in.)									Tool No.	Qty/box
	American	Metric			dz	B	L	F	E	ø D	ø d ₁	a	T		
26 to 22 (0.25 to 0.5)	1-2	2	0.5-2B		2.2 (.087)	4.6 (.181)	11.6 (.457)	4.5 (.177)	4.0 (.157)	2.0 (.079)	1.0 (.039)	1.0 (.039)	0.5 (.020)	YHT-2622 YA-1 YA-2 BCT-0514	1,000
	3-4	3.5	0.5-3B		3.7 (.146)	6.5 (.256)	12.6 (.496)	5.8 (.228)							
	8	4	0.5-4B		4.3 (.169)	7.0 (.276)	15.0 (.591)	6.3 (.248)							
22 to 16 (0.25 to 1.65)	5-6	3.5	1.25-T3B		3.7 (.146)	6.4 (.252)	13.1 (.516)	5.1 (.201)	4.8 (.189)	3.4 (.134)	1.7 (.067)	1.0 (.039)	0.8 (.031)	YHT-2210 YA-1 YA-2 YA-4 BCT-0514	1,000
	5-6	3.5	1.25-YS3B		3.7 (.146)	6.4 (.252)	14.2 (.559)	6.3 (.248)							
	5-6	3.5	1.25-S3B		3.7 (.146)	7.5 (.295)	13.1 (.516)	5.1 (.201)							
	5-6	3.5	1.25-3B		3.7 (.146)	8.5 (.335)	17.5 (.689)	7.2 (.284)							
	8	4	1.25-YS4B		4.3 (.169)	6.4 (.252)	14.2 (.559)	6.3 (.248)							
	8	4	1.25-S4B		4.3 (.169)	7.5 (.295)	13.1 (.516)	5.1 (.201)							
	8	4	1.25-4B		4.3 (.169)	8.5 (.335)	18.5 (.728)	7.2 (.284)							
	10	5	1.25-5B		5.3 (.209)	8.5 (.335)	18.5 (.728)	7.2 (.284)							
16 to 14 (1.04 to 2.63)	5-6	3.5	2-YS3B		3.7 (.146)	6.4 (.252)	14.4 (.567)	6.3 (.248)	4.8 (.189)	4.1 (.161)	2.3 (.091)	1.5 (.059)	0.8 (.031)	YHT-2210 YA-1 YA-2 YA-4 BCT-0514	1,000
	5-6	3.5	2-T3B		3.7 (.146)	7.5 (.295)	13.5 (.532)	5.2 (.205)							
	5-6	3.5	2-S3B		3.7 (.146)	8.5 (.335)	14.8 (.583)	7.2 (.283)							
	5-6	3.5	2-3B		3.7 (.146)	8.5 (.335)	17.0 (.670)	7.2 (.283)							
	8	4	2-T4B		4.3 (.169)	7.5 (.295)	13.5 (.532)	5.2 (.205)							
	8	4	2-S4B		4.3 (.169)	8.5 (.335)	14.8 (.583)	7.2 (.283)							
	8	4	2-E4B		4.3 (.169)	8.5 (.335)	15.2 (.598)	7.3 (.287)							
	8	4	2-4B		4.3 (.169)	8.5 (.335)	17.0 (.670)	7.3 (.287)							
	10	5	2-5B		5.3 (.209)	8.5 (.335)	17.0 (.670)	7.3 (.287)							
	1/4	6	2-6B		6.4 (.252)	13.5 (.532)	24.0 (.945)	11.7 (.461)							
12 to 10 (2.63 to 6.64)	5-6	3.5	5.5-S3B		3.7 (.146)	7.6 (.299)	18.0 (.709)	6.2 (.244)	6.8 (.268)	5.6 (.221)	3.4 (.134)	1.5 (.059)	1.0 (.039)	YHT-2210 YA-1 YA-2 YA-4 BCT-0514	1,000
	5-6	3.5	5.5-3B		3.7 (.146)	8.5 (.335)	19.5 (.768)	7.5 (.295)							
	8	4	5.5-S4B		4.3 (.169)	7.6 (.299)	18.0 (.709)	6.2 (.244)							
	8	4	5.5-4B		4.3 (.169)	8.5 (.335)	19.5 (.768)	7.5 (.295)							
	10	5	5.5-S5B		5.3 (.209)	7.6 (.299)	18.0 (.709)	6.2 (.244)							
	10	5	5.5-5B		5.3 (.209)	8.5 (.335)	19.5 (.768)	7.5 (.295)							
	10	5	5.5-E5B		5.3 (.209)	9.5 (.374)	17.5 (.689)	7.5 (.295)							
	1/4	6	5.5-6B		6.4 (.252)	13.5 (.532)	26.5 (1.043)	12.2 (.480)							

Note: 1) The part numbers indicated in the above table are for products with a brazed seam.
 When ordering products with a butted seam, add the prefix "WS" to the part number (ex. 2-4B → **WS2-4B**).
 2) Delivery lead times may vary depending on the product. Contact JST for details.

Solderless terminals



FLANGED SPADE TONGUE (B type) Vinyl-insulated

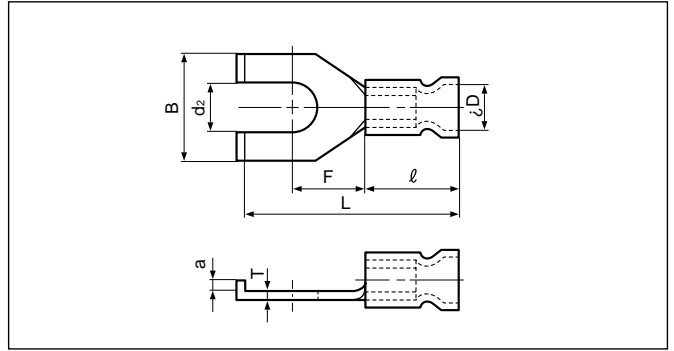


File No.: E42024 LR20812

Applicable Wire AWG#(mm ²)	Stud size		Part No.		Standard	Dimensions mm (in.)										Color	Tool No.	Qty/box
	American	Metric	Straight	Flared		d ₂	B	L	F	a	ℓ	ø D		T				
													Str.	Flid.				
26 to 22 (0.2 to 0.5)	1-2	2	V0.5-2B	FV0.5-2B		2.2 (.087)	4.6 (.181)	15.6 (.614)	4.5 (.177)	1.0 (.039)	8.0 (.315)	1.9 (.075)	2.9 (.114)	0.5 (.020)	Yellow	YNT-2622 YA-1, YA-2 BCT-0514	1,000	
	5-6	3.5	V0.5-3B	FV0.5-3B		3.7 (.146)	6.5 (.256)	16.6 (.654)	5.8 (.228)									
22 to 16 (0.25 to 1.65)	5-6	3.5	V1.25-YS3B	FV1.25-YS3B		3.7 (.146)	6.4 (.252)	18.4 (.724)	6.3 (.248)	0.8 (.031)	9.0 (.354)	3.2 (.126)	4.0 (.157)	0.8 (.031)	Red	YNT-2216 YA-1 YA-2 YA-4 BCT-0514	1,000	
	5-6	3.5	V1.25-S3B	FV1.25-S3B		3.7 (.146)	7.5 (.295)	17.3 (.681)	5.1 (.201)	1.5 (.059)								
	5-6	3.5	V1.25-3B	FV1.25-3B		3.7 (.146)	8.5 (.335)	21.7 (.854)	7.2 (.284)									
	8	4	V1.25-YS4B	FV1.25-YS4B		4.3 (.169)	6.4 (.252)	18.4 (.724)	6.3 (.248)	0.8 (.031)								
	8	4	V1.25-S4B	FV1.25-S4B		4.3 (.169)	7.5 (.295)	17.3 (.681)	5.1 (.201)	1.5 (.059)								
	8	4	V1.25-4B	FV1.25-4B		4.3 (.169)	8.5 (.335)	22.7 (.894)	7.2 (.284)									
	10	5	V1.25-5B	FV1.25-5B		5.3 (.209)	8.5 (.335)	22.7 (.894)	7.2 (.284)									
1/4	6	V1.25-6B	FV1.25-6B		6.4 (.252)	13.5 (.532)	28.2 (1.110)	11.7 (.461)								500		
16 to 14 (1.04 to 2.63)	5-6	3.5	V2-YS3B	FV2-YS3B		3.7 (.146)	6.4 (.252)	18.6 (.732)	6.3 (.248)	0.8 (.031)	9.0 (.354)	3.9 (.154)	4.5 (.177)	0.8 (.031)	Blue	YNT-1614 YA-1 YA-2 YA-4 BCT-0514	1,000	
	5-6	3.5	V2-T3B	FV2-T3B		3.7 (.146)	7.5 (.295)	17.7 (.697)	5.2 (.205)	1.5 (.059)								
	5-6	3.5	V2-S3B	FV2-S3B		3.7 (.146)	8.5 (.335)	19.0 (.748)	7.2 (.284)									
	5-6	3.5	V2-3B	FV2-3B		3.7 (.146)	8.5 (.335)	21.2 (.835)	7.2 (.284)									
	8	4	V2-T4B	FV2-T4B		4.3 (.169)	7.5 (.295)	17.7 (.696)	5.2 (.205)	1.0 (.039)								
	8	4	V2-S4B	FV2-S4B		4.3 (.169)	8.5 (.335)	19.0 (.748)	7.2 (.284)	1.5 (.059)								
	8	4	V2-E4B	FV2-E4B		4.3 (.169)	8.5 (.335)	19.4 (.764)	7.3 (.287)									
	8	4	V2-4B	FV2-4B		4.3 (.169)	8.5 (.335)	21.2 (.835)	7.3 (.287)									
10	5	V2-5B	FV2-5B		5.3 (.209)	8.5 (.335)	21.2 (.835)	7.3 (.287)										
1/4	6	V2-6B	FV2-6B		6.4 (.252)	13.5 (.532)	28.2 (1.110)	11.7 (.461)								500		
12 to 10 (2.63 to 6.64)	5-6	3.5	V5.5-S3B	FV5.5-S3B		3.7 (.146)	7.6 (.299)	24.7 (.972)	6.2 (.244)	1.5 (.059)	13.5 (.531)	5.4 (.213)	6.8 (.268)	1.0 (.039)	Yellow	YNT-1210S YA-4 BCT-0514	500	
	5-6	3.5	V5.5-3B	FV5.5-3B		3.7 (.146)	8.5 (.335)	26.2 (1.032)	7.5 (.295)									
	8	4	V5.5-S4B	FV5.5-S4B		4.3 (.169)	7.6 (.299)	24.7 (.972)	6.2 (.244)									
	8	4	V5.5-4B	FV5.5-4B		4.3 (.169)	8.5 (.335)	26.2 (1.032)	7.5 (.295)									
	10	5	V5.5-S5B	FV5.5-S5B		5.3 (.209)	7.6 (.299)	24.7 (.972)	6.2 (.244)									
	10	5	V5.5-5B	FV5.5-5B		5.3 (.209)	8.5 (.335)	26.2 (1.032)	7.5 (.295)									
	10	5	V5.5-E5B	FV5.5-E5B		5.3 (.209)	9.5 (.374)	24.2 (.953)	7.5 (.295)									
1/4	6	V5.5-6B	FV5.5-6B		6.4 (.252)	13.5 (.532)	33.2 (1.307)	12.2 (.480)								250		

- Note:1) *The crimping will be more secure if the total cross-sectional area of the wire is at least 0.5 mm².
 Examples: If the cross-sectional area of the wire is 0.3mm², fold the wire in two when crimping the terminal.
 If the cross-sectional area of the wire is 0.5mm², crimp the terminal onto the wire as it is.
- The part numbers indicated in the above table are for products with a brazed seam.
 When ordering products with a butted seam, add the prefix "WS" to the part number (ex. V2-4B → **VWS2-4B**).
 - To order products with nylon insulation, change the "V" in the part number prefix to "N" (ex. V2-T4B → **N2-T4B**).
 Because nylon absorbs moisture, care must be taken concerning storage.
 - Delivery lead times may vary depending on the product. Contact JST for details.

FLANGED SPADE TONGUE (B type) Vinyl-insulated (funnel-entry)



File No.: E42024 LR20812

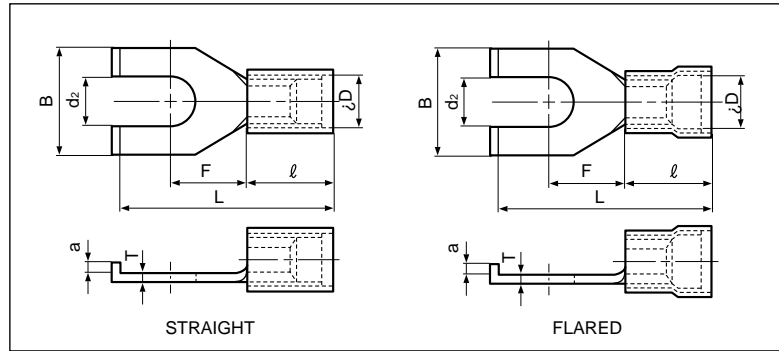
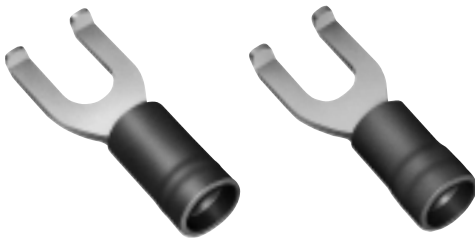
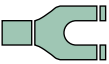
Applicable Wire AWG# (mm ²)	Stud size		Part No.	Standard	Dimensions mm (in.)								Color	Tool No.	Qty/box
	American	Metric			d ₂	B	L	F	a	ℓ	øD	T			
22 to 16 *(0.25 to 1.65)	5-6	3.5	FVX1.25-YS3B		3.7 (.146)	6.4 (.252)	20.2 (.795)	6.3 (.248)	0.8 (.031)	10.8 (.425)	4.0 (.157)	0.8 (.031)	Red	YNT-2216 YA-1 YA-2 YA-4 BCT-0514	1,000
	5-6	3.5	FVX1.25-S3B		3.7 (.146)	7.5 (.295)	19.1 (.752)	5.1 (.201)	1.5 (.059)						
	5-6	3.5	FVX1.25-3B		3.7 (.146)	8.5 (.335)	23.5 (.925)	7.2 (.284)	1.5 (.059)						
	8	4	FVX1.25-YS4B		4.3 (.169)	6.4 (.252)	20.2 (.795)	6.3 (.248)	0.8 (.031)						
	8	4	FVX1.25-S4B		4.3 (.169)	7.5 (.295)	19.1 (.752)	5.1 (.201)	1.5 (.059)						
	8	4	FVX1.25-4B		4.3 (.169)	8.5 (.335)	24.5 (.965)	7.2 (.283)	1.5 (.059)						
	10	5	FVX1.25-5B		5.3 (.209)	8.5 (.335)	24.5 (.965)	7.2 (.283)	1.5 (.059)						
	1/4	6	FVX1.25-6B		6.4 (.252)	13.5 (.531)	30.0 (1.181)	11.7 (.461)							-
16 to 14 (1.04 to 2.63)	5-6	3.5	FVX2-YS3B		3.7 (.146)	6.4 (.252)	20.4 (.803)	6.3 (.248)	0.8 (.031)	10.8 (.425)	4.6 (.181)	0.8 (.031)	Blue	YNT-1614 YA-1 YA-2 YA-4 BCT-0514	1,000
	5-6	3.5	FVX2-T3B		3.7 (.146)	7.5 (.295)	19.5 (.768)	5.2 (.205)	1.5 (.059)						
	5-6	3.5	FVX2-S3B		3.7 (.146)	8.5 (.335)	20.8 (.819)	7.2 (.283)	1.5 (.059)						
	5-6	3.5	FVX2-3B		3.7 (.146)	8.5 (.335)	23.0 (.906)	7.2 (.283)	1.5 (.059)						
	8	4	FVX2-T4B		4.3 (.169)	7.5 (.295)	19.5 (.768)	5.2 (.205)	1.0 (.039)						
	8	4	FVX2-S4B		4.3 (.169)	8.5 (.335)	20.8 (.819)	7.2 (.283)	1.5 (.059)						
	8	4	FVX2-E4B		4.3 (.169)	8.5 (.335)	21.2 (.835)	7.3 (.287)	1.0 (.039)						
	8	4	FVX2-4B		4.3 (.169)	8.5 (.335)	23.0 (.906)	7.3 (.287)	1.5 (.059)						
	10	5	FVX2-5B		5.3 (.209)	8.5 (.335)	23.0 (.906)	7.3 (.287)	1.5 (.059)						
	1/4	6	FVX2-6B		6.4 (.252)	13.5 (.531)	30.0 (1.181)	11.7 (.461)							-
12 to 10 (2.63 to 6.64)	5-6	3.5	FVX5.5-S3B		3.7 (.146)	7.6 (.299)	25.2 (.992)	6.2 (.244)	1.5 (.059)	14.0 (.551)	6.8 (.268)	1.0 (.039)	Yellow	YNT-1210S YA-4 BCT-0514	500
	5-6	3.5	FVX5.5-3B		3.7 (.146)	8.5 (.335)	26.7 (1.051)	7.5 (.295)							
	8	4	FVX5.5-S4B		4.3 (.169)	7.6 (.299)	25.2 (.992)	6.2 (.244)							
	8	4	FVX5.5-4B		4.3 (.169)	8.5 (.335)	26.7 (1.051)	7.5 (.295)							
	10	5	FVX5.5-S5B		5.3 (.209)	7.6 (.299)	25.2 (.992)	6.2 (.244)							
	10	5	FVX5.5-5B		5.3 (.209)	8.5 (.335)	26.7 (1.051)	7.5 (.295)							
	10	5	FVX5.5-E5B		5.3 (.209)	9.6 (.378)	24.7 (.972)	7.5 (.295)							
		1/4	6	FVX5.5-6B		6.4 (.252)	13.5 (.531)	33.7 (1.327)							12.2 (.480)

- Note: 1) The part numbers indicated in the above table are for products with a brazed seam.
 When ordering products with a butted seam, add the prefix "WS" to the part number (ex. FVX2-4B → **FVXWS2-4B**).
 2) *The crimping will be more secure if the total cross-sectional area of the wire is at least 0.5 mm².
 Examples: If the cross-sectional area of the wire is 0.3mm², fold the wire in two when crimping the terminal.
 If the cross-sectional area of the wire is 0.5mm², crimp the terminal onto the wire as it is.
 3) Delivery lead times may vary depending on the product. Contact JST for details.

Solderless terminals



FLANGED SPADE TONGUE (B type) Vinyl-insulated with copper sleeve



File No.: E42024 LR20812

Applicable Wire AWG#(mm ²)	Stud size		Part No.		Standard	Dimensions mm (in.)										Color	Tool No.	Qty/box	
	American	Metric	Straight	Flared		d ₂	B	L	F	a	l	ø D		T					
														Str.	Fid.				
26 to 22 (0.2 to 0.5)	1-2	2	VD0.5-2B	-		2.2 (.087)	4.6 (.181)	15.6 (.614)	4.5 (.177)	1.0 (.039)	8.0 (.315)	2.2 (.087)	2.5 (.098)	0.5 (.020)	Yellow	YNT-2622 YA-1, YA-2 BCT-0514	1,000		
	5-6	3.5	VD0.5-3B	-		3.7 (.146)	6.5 (.256)	16.6 (.654)	5.8 (.228)		8.3 (.327)								
	1-2	2	-	FVD0.5-2B		2.2 (.087)	4.6 (.181)	15.9 (.626)	4.5 (.177)	1.5 (.059)	9.6 (.378)	3.5 (.138)	4.0 (.157)	0.8 (.031)					
	5-6	3.5	-	FVD0.5-3B		3.7 (.146)	6.5 (.256)	16.9 (.665)	5.8 (.228)										
22 to 16 (0.25 to 1.65)	5-6	3.5	VD1.25-YS3B	FVD1.25-YS3B		3.7 (.146)	6.4 (.252)	19.0 (.748)	6.3 (.248)	0.8 (.031)	9.6 (.378)	3.5 (.138)	4.0 (.157)	0.8 (.031)	Red	YNT-2216 YA-1 YA-2 YA-4 BCT-0514	1,000		
	5-6	3.5	VD1.25-S3B	FVD1.25-S3B		3.7 (.146)	7.5 (.295)	17.9 (.705)	5.1 (.201)	1.5 (.059)									
	5-6	3.5	VD1.25-3B	FVD1.25-3B		3.7 (.146)	8.5 (.335)	22.3 (.878)	7.2 (.283)	1.5 (.059)									
	8	4	VD1.25-YS4B	FVD1.25-YS4B		4.3 (.169)	6.4 (.252)	19.0 (.748)	6.3 (.248)										
	8	4	VD1.25-S4B	FVD1.25-S4B		4.3 (.169)	7.5 (.295)	17.9 (.705)	5.1 (.201)	1.5 (.059)									
	8	4	VD1.25-4B	FVD1.25-4B		4.3 (.169)	8.5 (.335)	23.3 (.917)	7.2 (.283)										
	10	5	VD1.25-5B	FVD1.25-5B		5.3 (.209)	8.5 (.335)	23.3 (.917)	7.2 (.283)	1.5 (.059)									
	1/4	6	VD1.25-6B	FVD1.25-6B		6.4 (.252)	13.5 (.531)	28.8 (1.134)	11.7 (.461)										
16 to 14 (1.04 to 2.63)	5-6	3.5	VD2-YS3B	FVD2-YS3B		3.7 (.146)	6.4 (.252)	19.2 (.756)	6.3 (.248)	0.8 (.031)	9.6 (.378)	4.1 (.161)	4.7 (.185)	0.8 (.031)	Blue	YNT-1614 YA-1 YA-2 YA-4 BCT-0514	1,000		
	5-6	3.5	VD2-T3B	FVD2-T3B		3.7 (.146)	7.5 (.295)	18.3 (.720)	5.2 (.205)	1.5 (.059)									
	5-6	3.5	VD2-S3B	FVD2-S3B		3.7 (.146)	8.5 (.335)	19.6 (.772)	7.2 (.283)										
	5-6	3.5	VD2-3B	FVD2-3B		3.7 (.146)	8.5 (.335)	21.8 (.858)	7.2 (.283)	1.0 (.039)									
	8	4	VD2-T4B	FVD2-T4B		4.3 (.169)	7.5 (.295)	18.3 (.720)	5.2 (.205)										
	8	4	VD2-S4B	FVD2-S4B		4.3 (.169)	8.5 (.335)	19.6 (.772)	7.2 (.283)	1.5 (.059)									
	8	4	VD2-E4B	FVD2-E4B		4.3 (.169)	8.5 (.335)	20.0 (.787)	7.3 (.287)										
	8	4	VD2-4B	FVD2-4B		4.3 (.169)	8.5 (.335)	21.8 (.858)	7.3 (.287)	1.5 (.059)									
	10	5	VD2-5B	FVD2-5B		5.3 (.209)	8.5 (.335)	21.8 (.858)	7.3 (.287)										
	1/4	6	VD2-6B	FVD2-6B		6.4 (.252)	13.5 (.531)	28.8 (1.134)	11.7 (.461)										
12 to 10 (2.63 to 6.64)	5-6	3.5	VD5.5-S3B	FVD5.5-S3B		3.7 (.146)	7.6 (.299)	25.2 (.992)	6.2 (.244)	1.5 (.059)	14.0 (.551)	5.7 (.224)	6.5 (.256)	1.0 (.039)	Yellow	YNT-1210S YA-4 BCT-0514	500		
	5-6	3.5	VD5.5-3B	FVD5.5-3B		3.7 (.146)	8.5 (.335)	26.7 (1.051)	7.5 (.295)										
	8	4	VD5.5-S4B	FVD5.5-S4B		4.3 (.169)	7.6 (.299)	25.2 (.992)	6.2 (.244)										
	8	4	VD5.5-4B	FVD5.5-4B		4.3 (.169)	8.5 (.335)	26.7 (1.051)	7.5 (.295)										
	10	5	VD5.5-S5B	FVD5.5-S5B		5.3 (.209)	7.6 (.299)	25.2 (.992)	6.2 (.244)										
	10	5	VD5.5-5B	FVD5.5-5B		5.3 (.209)	8.5 (.335)	26.7 (1.051)	7.5 (.295)										
	10	5	VD5.5-E5B	FVD5.5-E5B		5.3 (.209)	9.5 (.374)	24.7 (.972)	7.5 (.295)										
	1/4	6	VD5.5-6B	FVD5.5-6B		6.4 (.252)	13.5 (.531)	33.7 (1.367)	12.2 (.480)										

Note: 1) The part numbers indicated in the above table are for products with a brazed seam.
 When ordering products with a butted seam, add the prefix "WS" to the part number (ex. FVD2-4B → FVDWS2-4B).
 2) To order products with nylon insulation, change the "V" in the part number prefix to "N" (ex. VD2-4B → ND2-4B).
 Because nylon absorbs moisture, care must be taken concerning storage.
 3) Delivery lead times may vary depending on the product. Contact JST for details.