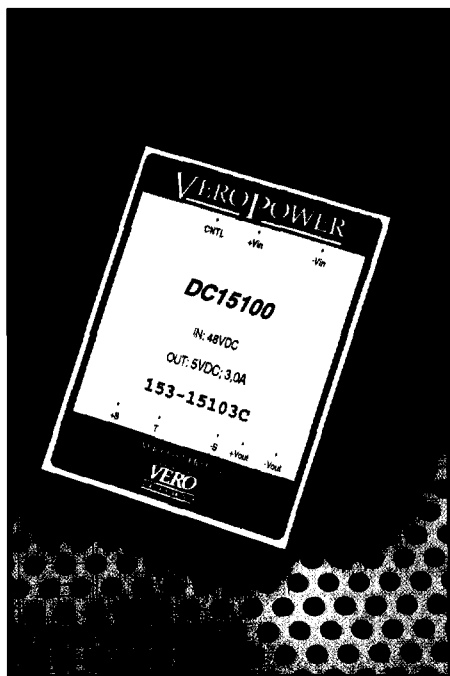


POWER CONVERSION

DC15100 SERIES
WIDE INPUT

DC-DC
15 WATTS



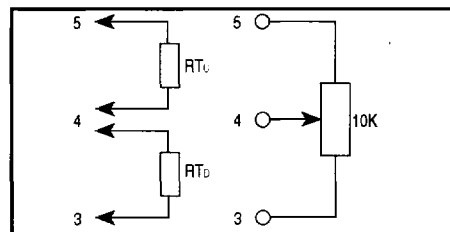
FEATURES

- Up to 15W output
- Noise immunity to EN 6100-4-2, -4, -5
- Regulated outputs
- Input/Output isolation
- Meets prETS300-132
- 2:1 input range
- No derating to 71°C
- Six sided RFI shield
- Remote on/off
- UL listed
- **24 MONTH WARRANTY**
- MTBF >750000 hours actual product performance

PIN ALLOCATION

Pin	Single Output	Dual Output
1	+V in	+V in
2	-V in	-V in
3	no pin	+V out
4	Trim	Common
5	no pin	-V out
6	+V out	no pin
7	-V out	no pin
8	Remote on/off	

OUTPUT TRIMMING



The new VEROPOWER DC15100 series is a slightly smaller, improved performance version of the 15000 series single, dual and triple output dc-dc converters. With their wide input range, these units are ideally suited to battery applications. Typical industry sectors would be telecomms, automotive, robotics, fork lift trucks etc. Because of their rugged construction this series is well suited to severe environmental applications such as military and aerospace. Alternative input/output combinations are available to special order.

ELECTRICAL SPECIFICATIONS

All specifications typical at nominal line, full load and 25°C unless otherwise stated.

INPUT SPECIFICATION

Input voltage: (DC)	12V (9-18V), 24V (18-36V), 48V (36-75V)
Reverse voltage protection:	internal shunt diode (single and dual outputs)
Efficiency:	typically 84%
Remote on/off CMOS or open collector TTL:	on -V in 5,5V or open circuit, off -V in ≤ 1,8V

OUTPUT SPECIFICATION

Output voltage: (DC)	see ordering table
Voltage accuracy (single outputs adjustable):	±1%
Ripple (20MHz bandwidth):	single output 60mV p-p; others 100mV p-p
Overvoltage protection (OVP):	all single and triple outputs
Short circuit protection:	continuous

REGULATION

Line: over input range	±0,2% (triples 1%)
Load: 100%, -0% I _{out}	±5%
Time (25% load steps):	500µs
Switching frequency:	350 kHz

ISOLATION

Resistance:	10 ⁹ Ω
Voltage:	500 VDC

ENVIRONMENTAL SPECIFICATION

Temperature - operating:	-25°C to +71°C
Temperature - storage:	-55°C to +105°C
Derating:	none

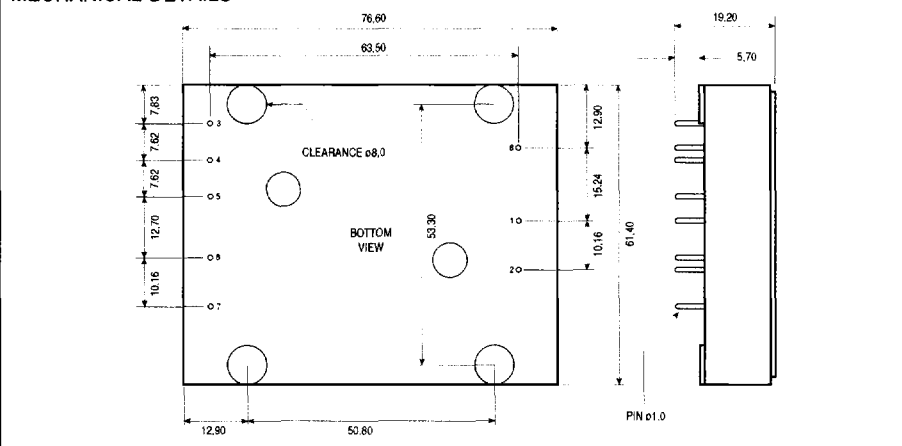
PHYSICAL SPECIFICATION

Dimensions (mm):	66,0 x 76,2 x 21,1
Weight:	120g
Case material:	non-conductive black plastic
Flammability:	UL94 V-0



48V input models: Low Voltage Directive #73/23/EEC

MECHANICAL DETAILS



VEROPOWER DC15100 SERIES

Ordering information

Input voltage	Order code			
	Output Voltage / Current DC			
	5V/3A	12V/1,25A	±12V/625mA	±15V/500mA
12 VDC	153-15101J	153-15104L	153-15107B	153-15110H
24 VDC	153-15102F	153-15105H	153-15108K	153-15111E
48 VDC	153-15103C	153-15106E	153-15109G	-

Order codes in **bold** are standard stocked items. For other order code listings consult VERO Technical sales.