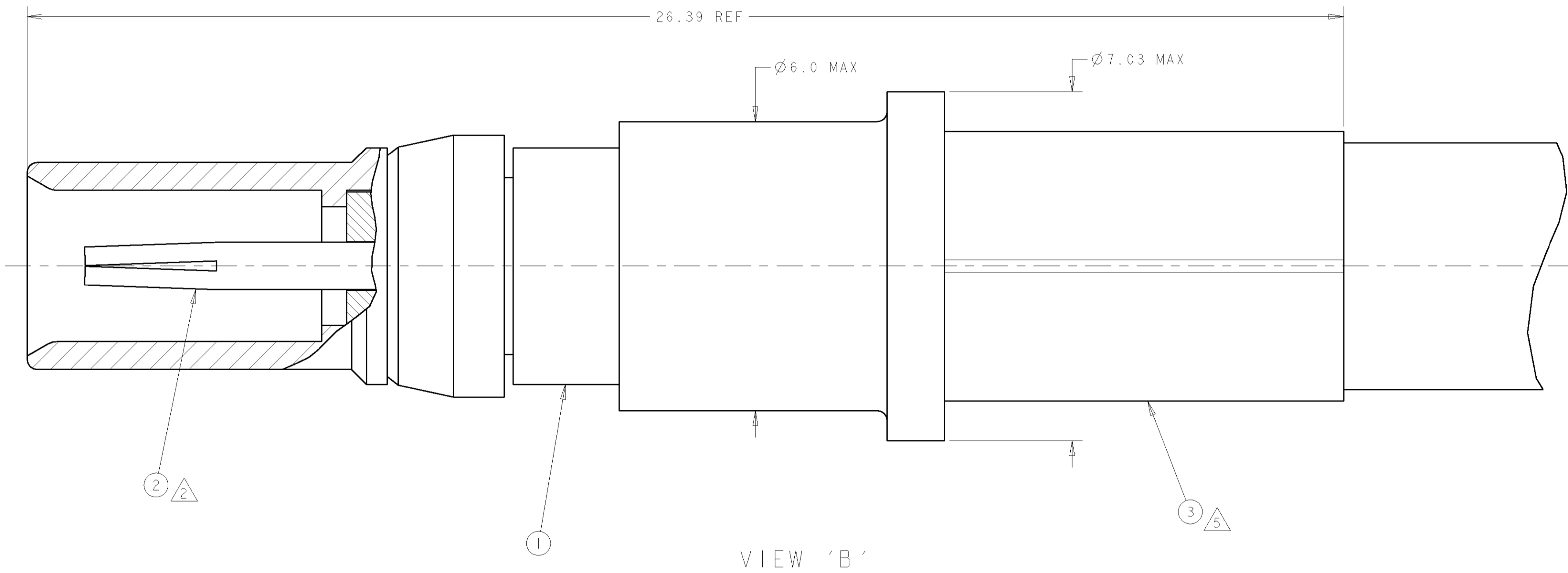
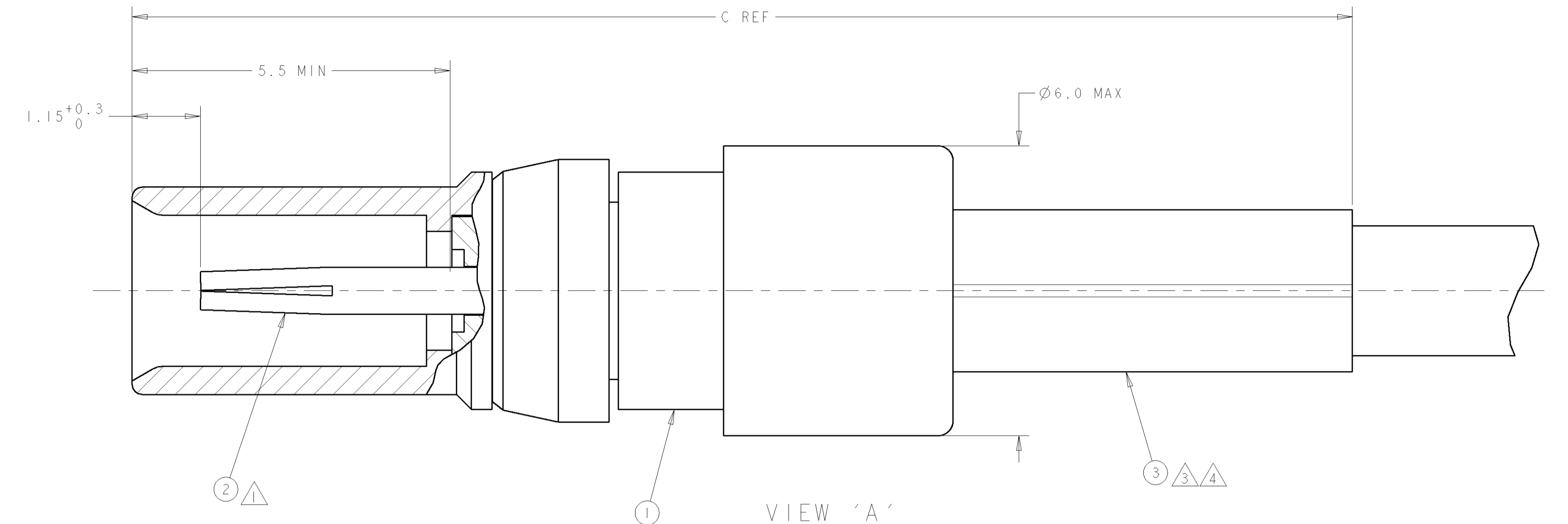
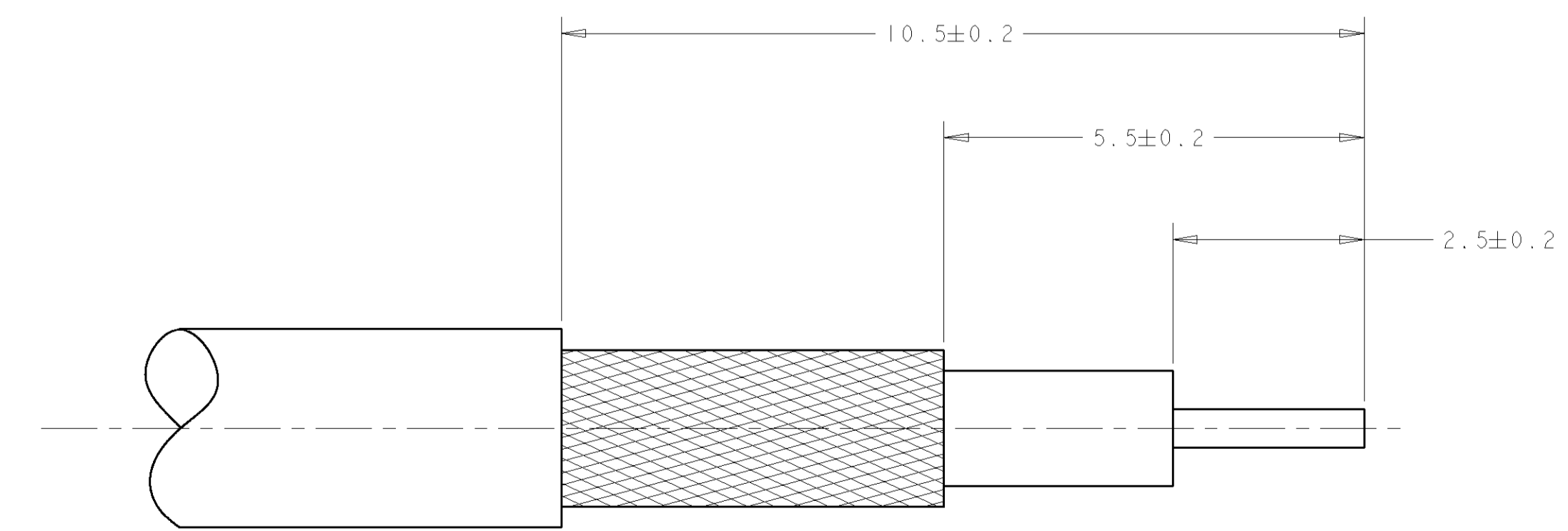


LOC	DIST	REVISIONS			
F	LTW	DESCRIPTION	DATE	DWN	APPD
AJ	16	A	REV PER 0630-0416-98	07OCT98	MO K/W
		B	OBS-2,-4 SUPSD-1,-3 PER 0020-0315-00	02JAN01	MO K/W



- △ CENTER CONTACT CRIMP: USE DANIELS HAND TOOL AFM8 OR AMP HAND TOOL 601966-1 WITH POSITIONER KI221
- △ CENTER CONTACT CRIMP: USE DANIELS HAND TOOL AF8 OR AMP HAND TOOL 601967-1 WITH POSITIONER TP1207
- △ BRAID CRIMP: USE DANIELS HAND TOOL HX4 WITH DIESET Y196 CAVITY A OR AMP HAND TOOL 354940-1 WITH DIESET 58483-1 CAVITY B
- △ BRAID CRIMP: USE DANIELS HAND TOOL HX4 WITH DIESET Y138 CAVITY B OR AMP HAND TOOL 354940-1 WITH DIESET 58483-1 CAVITY C
- △ BRAID CRIMP: USE DANIELS HAND TOOL HX4 WITH DIESET Y197 CAVITY A OR AMP HAND TOOL 354940-1 WITH DIESET 58436-1 CAVITY B



RECOMMENDED STRIP LENGTH
SCALE 10:1

CRIMP METHOD	DIM C	CABLE	FERRULE QTY	CONTACT, FEMALE QTY	SUB-ASSY, SOCKET QTY	VIEW	PART NUMBER
△ 2 △ 5	-	RG58 TYPE	1-148260-3	148327-4	148344-1	B	148338-6
△ 2 △ 5	-	TIMES LMR200	1-148260-1	148327-8	148344-1	B	148338-5
OBSOLETE	△ 2 △ 5	RG142	148260-7	148327-4	148344-1	B	148338-4
SUPSD BY 1392020-1	△ 1 △ 3	RG316	148260-9	148316-4	148339-1	A	148338-3
OBSOLETE	△ 1 △ 4	RD316	148260-5	148316-4	148339-1	A	148338-2
SUPSD BY 1392020-1	△ 1 △ 3	RG316	148260-3	148316-4	148339-1	A	148338-1

AMP Incorporated
Harrisburg, PA 17105-3608

AMP

SOCKET, STRAIGHT, COAX, TYPE C

SCALE 15:1 SHEET 1 OF 1 REV B