

# STRIPLINE 90° HYBRIDS

## 2:1 TO 4:1 BANDWIDTH

Bandwidth	Frequency Range (GHz)	Coupling Loss (dB)	Isolation (dB) min.	Amplitude Balance (dB) max.	Phase Balance (Deg) max.	VSWR max.	P/N
2:1	0.5-1.0	3.2 ± 0.3	28	1.2	3.0	1.15:1	QS2-01-464/1
2:1	1.0-2.0	3.2 ± 0.3	28	1.2	3.0	1.15:1	QS2-02-464/2
2:1	2.0-4.0	3.2 ± 0.3	22	1.2	4.0	1.20:1	QS2-03-463/1
2:1	2.0-5.2	3.2 ± 0.3	20	1.2	4.0	1.25:1	QS2-04-463/2
2:1	4.0-8.0	3.3 ± 0.3	18	1.4	4.0	1.25:1	QS2-05-463/2
4:1	2.0-8.0	3.4 ± 0.5	17	1.6	6.0	1.30:1	QS4-01-464/3
2:1	6.0-12.4	3.4 ± 0.8	17	1.4	6.0	1.40:1	QS2-06-463/2
6:1	3.0-18.0	3.5 ± 0.8	15	1.6	8.0	1.50:1	QS2-07-464/4

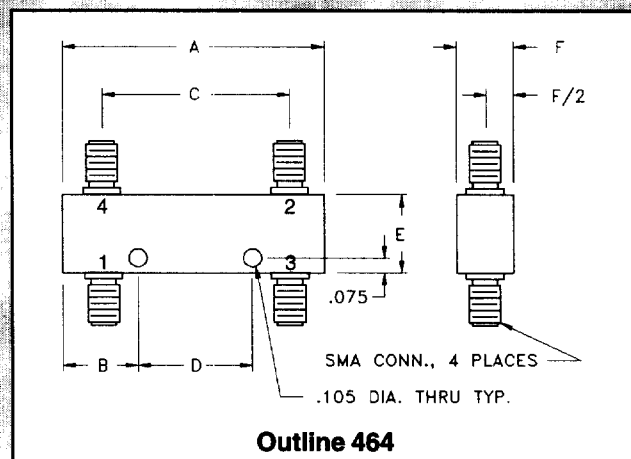
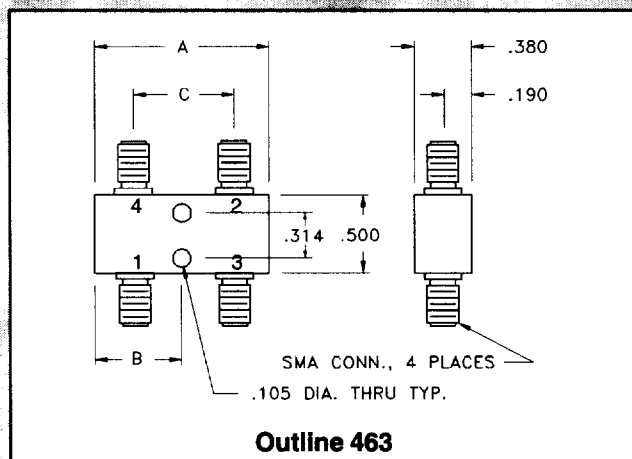
Notes: Power rating 100 watts max. for load VSWR better than 1.20:1.  
Higher power models available, consult factory.

### Port Configuration

Outline	Input	90° Output	0° Output	Isolated	Ground
463	1	4	2	3	Housing
464	1	4	2	3	Housing

OUTLINE	CONN.	A	B	C	D	E	F
463/1	SMA	1.15	.57	0.65	--	--	--
463/2	SMA	1.00	.50	0.50	--	--	--
464/1	SMA	3.06	.84	2.56	1.37	.50	.38
464/2	SMA	1.78	.64	1.28	0.50	.50	.38
464/3	SMA	2.60	.67	2.03	1.26	.75	.44
464/4	SMA	1.55	.52	1.05	0.50	.60	.40

Hybrids  
90° & 180°



48 Industrial West • Clifton, NJ 07012 • Tel: (973) 779-6262 • Fax: (973) 779-2727  
Web Site: [www.pulsarmicrowave.com](http://www.pulsarmicrowave.com) • E-Mail: [sales@pulsarmicrowave.com](mailto:sales@pulsarmicrowave.com)