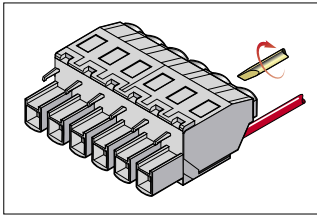


L 245 400 01 P.C.B. connectors

► Expert Range - Axial screw clamp connection



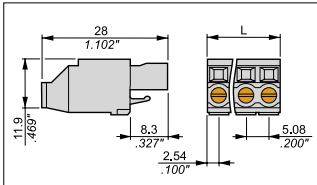
Female plug.

Axial screw clamp, plug wires parallel to connection.



Plug
TILE SHAPE

Body : UL94 V0 - PC
Grey



2.5 mm² - Spacing 5.08 mm .200"

Ordering details

N. Poles	Weight kg	Packaging	L. mm	Order code
2	0.0039	100	10.16	1SSA 245 402 R0100
3	0.0058	100	15.24	1SSA 245 403 R0100
4	0.0077	100	20.32	1SSA 245 404 R0100
5	0.0097	50	25.40	1SSA 245 405 R0100
6	0.0116	50	30.48	1SSA 245 406 R0100
7	0.0135	50	35.56	1SSA 245 407 R0100
8	0.0155	50	40.64	1SSA 245 408 R0100
9	0.0174	50	45.72	1SSA 245 409 R0100
10	0.0193	50	50.80	1SSA 245 410 R0100
11	0.0213	50	55.88	1SSA 245 411 R0100
12	0.0232	50	60.96	1SSA 245 412 R0100
13	0.0251	50	66.04	1SSA 245 413 R0100
14	0.0271	50	71.12	1SSA 245 414 R0100

Technical data

	IEC	UL	CSA
Wire size			
Screw			
Solid wire	0.2 - 2.5 mm ²	22 - 14 AWG	22 - 14 AWG
Stranded wire	0.2 - 2.5 mm ²	22 - 14 AWG	22 - 14 AWG
With ferrule			
Rated voltage	250 V	300 V	300 V
Rated current	12 A	10 A	15 A
Short-circuit current			
Rated wire size / Gauge	2.5 mm ²	14 AWG	14 AWG
Storage temperature range		-20 ~ +80 °C	
Insulation resistance		≥ 10 ⁹ Ω	
Wire stripping length		8 / .315"	
Recommended screwdriver		3.5 mm / .138"	
Recommended torque		0.4 Nm / 3.5 lb.in	
Protection		IP 20 / NEMA 1	

Other numbers of poles, consult us



Test socket Ø 2 mm .079"

Plug L 245 400 01
compatible with :



L 255 100 01



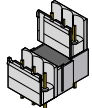
L 255 100 11



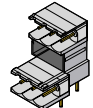
L 255 300 01



L 255 300 11



L 255 700



L 255 600

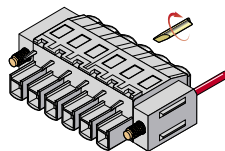


Accessories

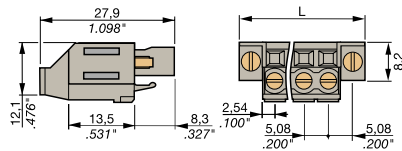
Rep.	Description	Type	Order code	Packaging	Weight kg
1	Coding peg		1SSA 299 084 R0600	50	0.0005

Other versions, please consult us :

Axial screw clamp, plug wires parallel to connection with flanges and M2.5 screws.



L 245 400 31



Plug L 245 400 31
compatible with :



L 255 100 31



L 255 300 31



L 365 200 31



L 345 200 31



L 699 037