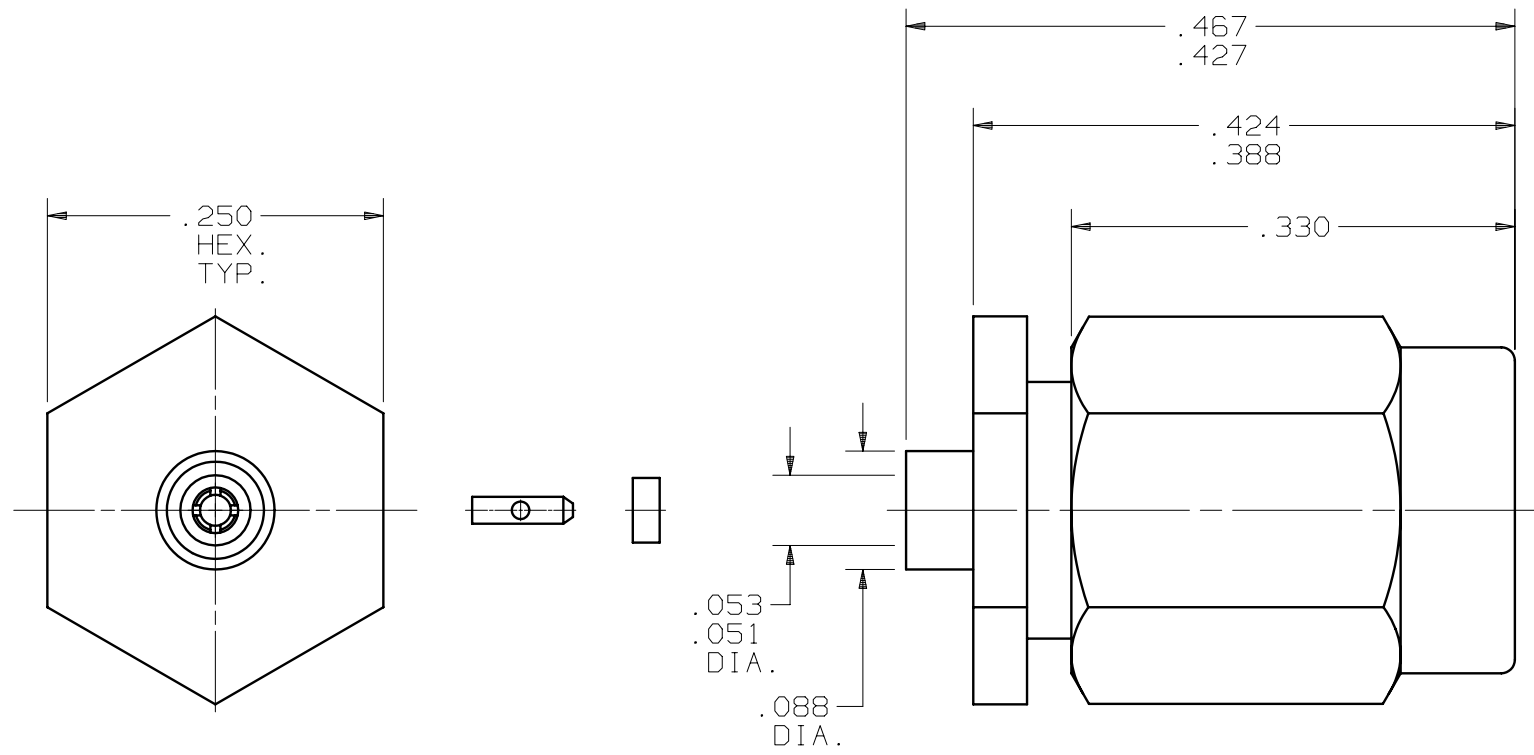


PRODUCT DATA DRAWING

| | | |
|-----------------------------|-------------------------------|----------------------------------|
| CAD GENERATED DRAWING | DCN CONTROLLED DOCUMENT | DWG. NO. 2706-6401 |
|-----------------------------|-------------------------------|----------------------------------|



MATERIAL:

BODY
 COUPLING NUT: STAINLESS STEEL PER AMS-5640, UNS S30300, TYPE I

CONTACTS
 LOCK WASHER: BERYLLIUM COPPER PER ASTM-B-196, ALLOY C17300, COND. TD04

INSULATORS: PTFE PER ASTM-D-1710

GASKET: SILICONE RUBBER PER ZZ-R-765 GRADE 50/60

FINISH:

BODY
 CONTACTS
 COUPLING NUT: GOLD PER ASTM B488, TYPE II, GRADE C, CLASS .76 OVER NICKEL PER AMS QQ-N-290

PERFORMANCE:

IMPEDANCE: 50 OHMS
 DWV: 750 VRMS
 FREQ. RANGE: DC-40.0 GHz
 INSUL. RES.: 5000 MEGOHMS, MIN.

| | | | | | | | | |
|------|----------------|-------|-------|--|---|---------------------|----------------------------------|---|
| SYM. | DESCRIPTION | DATE | APPR. | UNLESS OTHERWISE SPECIFIED: 1) ALL DIMENSIONS ARE AFTER PLATING. 2) BREAK CORNERS & EDGES .005 R. MAX. 3) CHAM. 1s1 & LAST THDS. 4) SURFACE ROUGHNESS 63 / MIL-STD-10. 5) DIAS. ON COMMON CENTERS TO BE CONCENTRIC WITHIN .005 T.I.R. 6) REMOVE ALL BURRS. | DIMENSIONS ARE IN INCHES TOLERANCES: | | | SV Microwave, Inc. 2400 Centrepark West Drive, Suite 100 West Palm Beach, FL 33409 |
| - | REL. DCN 32126 | 09/04 | STW | | DECIMALS .X ±.030 .XX ±.015 .XXX ±.005 | FRACTIONAL ±1/64 | ANGULAR X° ±1°0' X°X' ±15' | |
| | | | | DRAWN: MEB 09/21/04 | MATERIAL: SEE ABOVE | | □" AREA: N/A | DWG. NO. 2706-6401 |
| | | | | CHECKED: STW 09/21/04 | FINISH: SEE ABOVE | SIZE B | CAGE NO. 95077 | SCALE 7X |
| | | | | APPROVED: STW 09/21/04 | | | | |