

EMC Components

EMC Filters for AC Power Line Inlet-socket Type

ZUB.U-H, ZUB.D-H Series

FEATURES

- Either single fuse filters(U type) or double fuse filters(D type).
- Superior attenuation of common mode noise due to the use of a feed-through capacitor.
- Internal fuse simplifies maintenance(Without spare fuse).
- Leakage current is maintained below 0.5mA.
- Uses Faston® #250 output terminals, simplifying handling and maintenance, and permitting soldering.

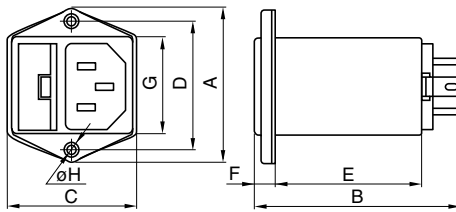
SAFETY STANDARDS

Part No.	Standard and standard No.		
	U.S.A	Canada	Europe
	UL(NRTL)	CSA	NEMKO
	UL1283	CSA C22.2 No.8	EN133200
ZUB22XXU-H	2500008659	LR76849C	P01101441
ZUB22XXD-H	2500008659	LR76849C	P01101441

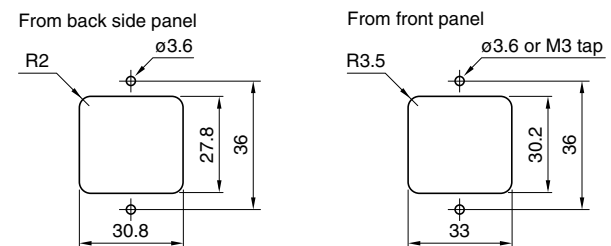
APPLICATIONS

Computer terminals, various types of office automation equipment, digital devices(ECRs, etc.), measurement equipment, medical equipment, etc.

SHAPES AND DIMENSIONS



Typical dimensions for installation



- Tighten the panel mounting M3 dia. bolt with the torque under $5.88 \times 10^{-1} \text{N} \cdot \text{m}$.

Series	A	B	C	D	E	F	G	øH
ZUB-U-H	44	68	37	36	41	6	27	3.5
ZUB-D-H	44	77	37	36	41	15	27	3.5

- Case:metal, input terminal:inlet-socket(EN60320), output terminal: Faston® #250(t:0.8mm)

ELECTRICAL CHARACTERISTICS

Part No.	ZUB2203U-H	ZUB2206U-H	ZUB2210U-H
Rated voltage Eac (V)	250	250	250
Rated current (A)	3	6	10
Test voltage Eac (V) [Between terminal and ground terminal]	1500	1500	1500
Insulation resistance (MΩ) [DC.500V, 1min/between terminal and ground terminal]	100min.	100min.	100min.
Leakage current (mA) [250V • 60Hz]	0.5max.	0.5max.	0.5max.
DC resistance (mΩ)	150max.	100max.	70max.
Operating temperature range (°C)[Including self-temperature rise]	-25 to +85	-25 to +85	-25 to +85
With derating over(°C)	55	55	55
Temperature rise (°C)	30max.	30max.	30max.
Attenuation frequency range (MHz) [+5 to +35°C]	Differential mode 30dB 2 to 1000	3 to 1000	6 to 1000
	Common mode 30dB 1 to 1000	4 to 1000	20 to 1000
Weight (g)	76	76	76

Part No.	ZUB2203D-H	ZUB2206D-H	ZUB2210D-H
Rated voltage Eac (V)	250	250	250
Rated current (A)	3	6	10
Test voltage Eac (V) [Between terminal and ground terminal]	1500	1500	1500
Insulation resistance (MΩ) [DC.500V, 1min/between terminal and ground terminal]	100min.	100min.	100min.
Leakage current (mA) [250V • 60Hz]	0.5max.	0.5max.	0.5max.
DC resistance (mΩ)	150max.	100max.	70max.
Operating temperature range (°C)[Including self-temperature rise]	-25 to +85	-25 to +85	-25 to +85
With derating over(°C)	55	55	55
Temperature rise (°C)	30max.	30max.	30max.
Attenuation frequency range (MHz) [+5 to +35°C]	Differential mode 30dB 2 to 1000	3 to 1000	6 to 1000
	Common mode 30dB 1 to 1000	4 to 1000	20 to 1000
Weight (g)	80	80	80

- Faston® is a registered trademark of Tyco Electronics AMP Corp. Incorporated.

- All specifications are subject to change without notice.

EMC Components

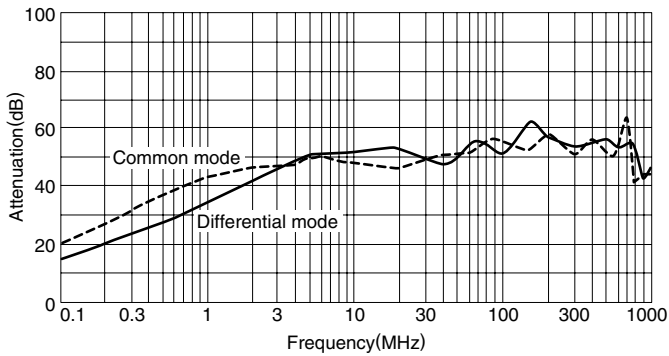
EMC Filters for AC Power Line Inlet-socket Type

ZUB.U-H, ZUB.D-H Series

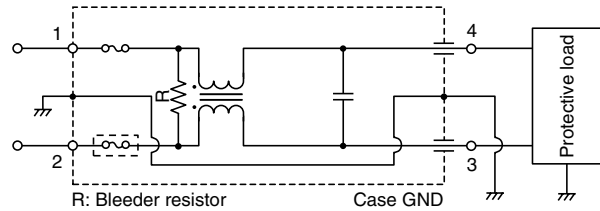
TYPICAL ELECTRICAL CHARACTERISTICS

ATTENUATION vs. FREQUENCY CHARACTERISTICS

ZUB2203U-H/D-H

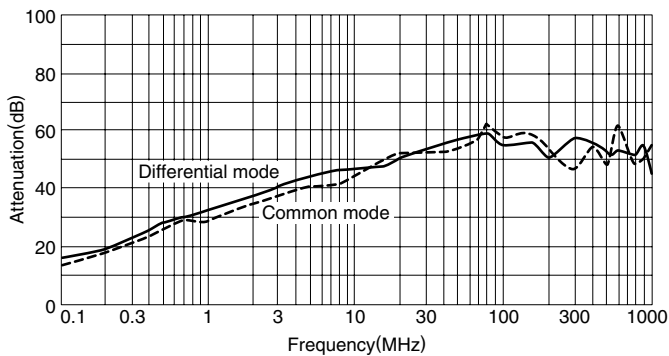


CIRCUIT DIAGRAM



- The U type lacks a fuse within the circuit region indicated by the dashed line.

ZUB2206U-H/D-H



ZUB2210U-H/D-H

