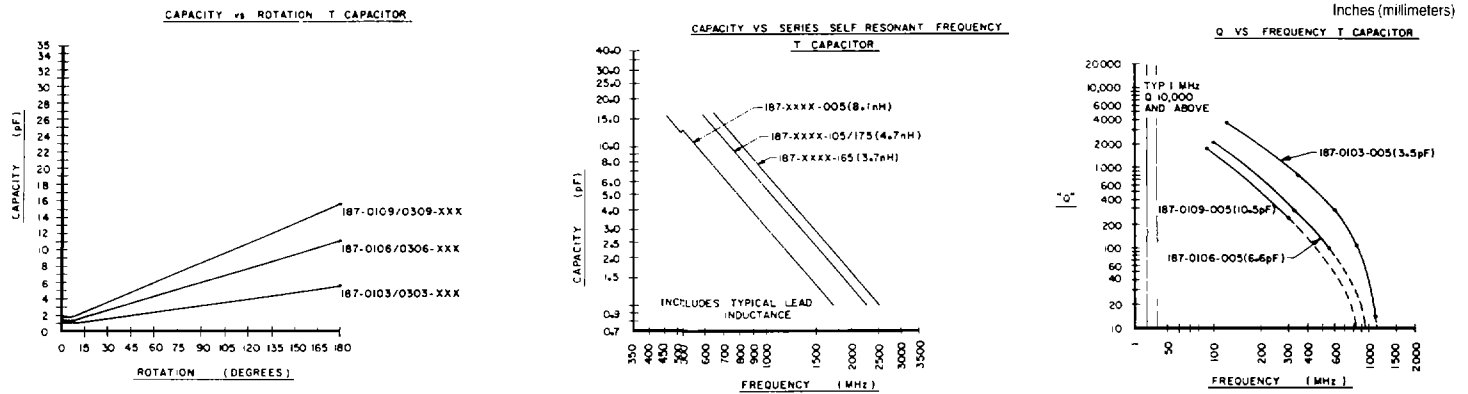


Air Variable Capacitors

SUB-MINIATURE TYPE T APPLICATION ● Communications equipment ● Test instruments ● Crystal oscillators and filters ● Remote control circuits



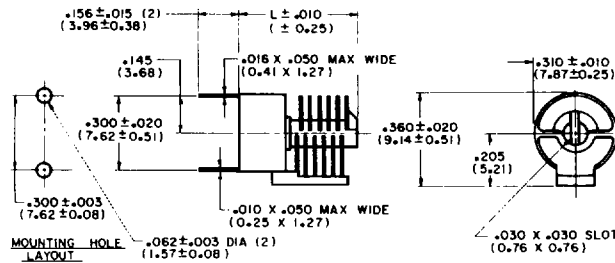
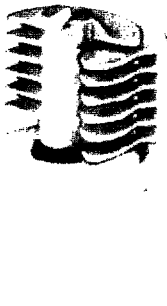
Vertical PC Mount

SPECIFICATIONS

Torque: 1.5-8.0 oz. in. (106-576 gm. cm.)
Working Voltage: 125 VDC^Δ
Insulation Resistance: 10⁵ megohm
Q Factor: 2000 at 1 MHz
Operating Temperature: -55°C to +125°C
Temperature Coefficient: +45 ± 45 ppm/°C
Nominal Air Gap: .008" (0.20mm)

FEATURES:

- Low loss ceramic base for stability
- Mounting same as many 10mm ceramic capacitors
- Stator attachment with high temperature solder (232°C)
- Silver plated machined plates

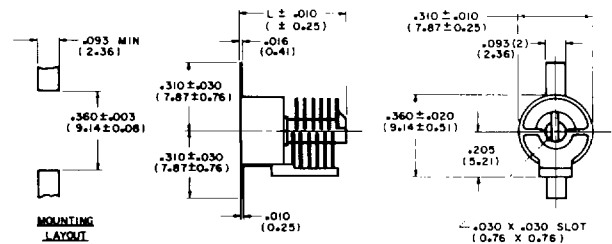


| PART NO. | NOMINAL CAPACITY (pF) | | GUARANTEED CAPACITY (pF) | | TOTAL PLATES | LENGTH" (mm) |
|--------------|-----------------------|--------------|--------------------------|-----------|--------------|--------------|
| | MINIMUM +20%/-100% | MAXIMUM ±20% | MAX./MIN. | MIN./MAX. | | |
| 187-0103-005 | 1.3 | 5.4 | 1.56 | 4.86 | 6 | .359 (9.12) |
| 187-0107-005 | 1.7 | 11.0 | 2.04 | 9.90 | 12 | .470 (11.94) |
| 187-0109-005 | 1.9 | 15.7 | 2.28 | 14.13 | 18 | .581 (14.76) |

Vertical PC Surface Mount

SPECIFICATIONS

Torque: 1.5-8.0 oz. in. (106-576 gm. cm.)
Working Voltage: 125 VDC^Δ
Insulation Resistance: 10⁵ megohm
Q Factor: 2000 at 1 MHz
Operating Temperature: -55°C to +125°C
Temperature Coefficient: +45 ± 45 ppm/°C
Nominal Air Gap: .008" (0.20mm)



FEATURES:

- Low loss ceramic base for stability
- Mounting same as many 10mm ceramic capacitors
- Stator attachment with high temperature solder (232°C)
- Silver plated machined plates

| PART NO. | NOMINAL CAPACITY (pF) | | GUARANTEED CAPACITY (pF) | | TOTAL PLATES | LENGTH" (mm) |
|--------------|-----------------------|--------------|--------------------------|-----------|--------------|--------------|
| | MINIMUM +20%/-100% | MAXIMUM ±20% | MAX./MIN. | MIN./MAX. | | |
| 187-0103-175 | 1.3 | 5.4 | 1.56 | 4.86 | 6 | .359 (9.12) |
| 187-0107-175 | 1.7 | 11.0 | 2.04 | 9.90 | 12 | .470 (11.94) |
| 187-0109-175 | 1.9 | 15.7 | 2.28 | 14.13 | 18 | .581 (14.76) |