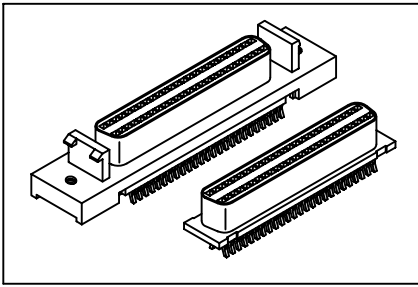


# 7227 Series

## SCSI Straddle Type

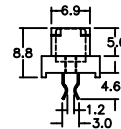
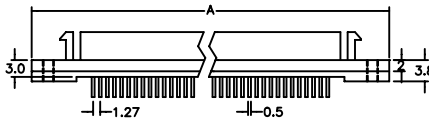
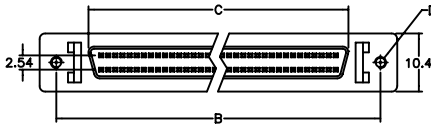


### Material:

**Housing:** 30% Glass filled PBT UL94V-0.  
**Contacts:** Phosphor Bronze.  
**Plating:** Gold plated.

### Electrical Characteristics:

**Current Rating:** 1 AMP.  
**Insulator Resistance:** 1000MΩmin. at DC 500V.  
**Contact Resistance:** 30mΩmax. at DC 100mA.  
**Operating Temperature:** -55°C~+105°C.



Thickness 1.6 ±0.05mm

Position	A	B	C	D
				Threaded Holes
50	52.45	46.48	34.98	2*56
				4*40
68	63.88	57.91	46.41	2*56
				4*40
LOCK LATCH	W/O RAIL WITH LATCH	W/O RAIL WITH LATCH	W/O RAIL WITH LATCH	W/O RAIL WITH LATCH
	#2*56	#4*40	#2*56	#4*40
	D	E	H	J

## Ordering information

7227-

50

F

D

Series

Position

F: Female

See: Lock Latch

N: Without Die Cast Bachshell,  
All Plastic Housing

C

C: Selective Gold Plated