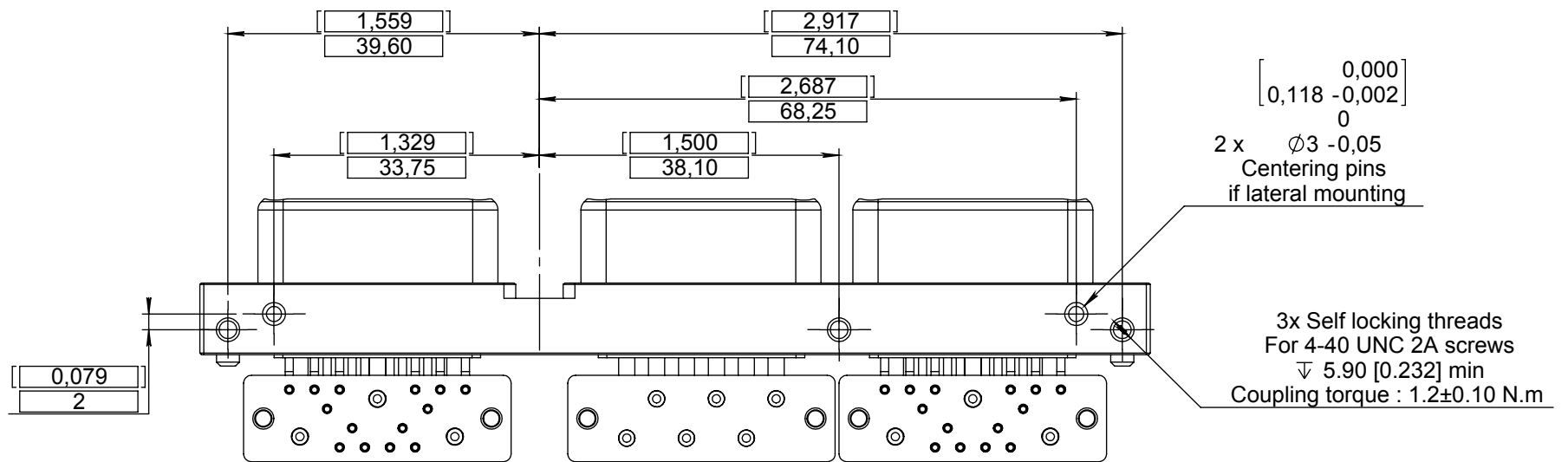
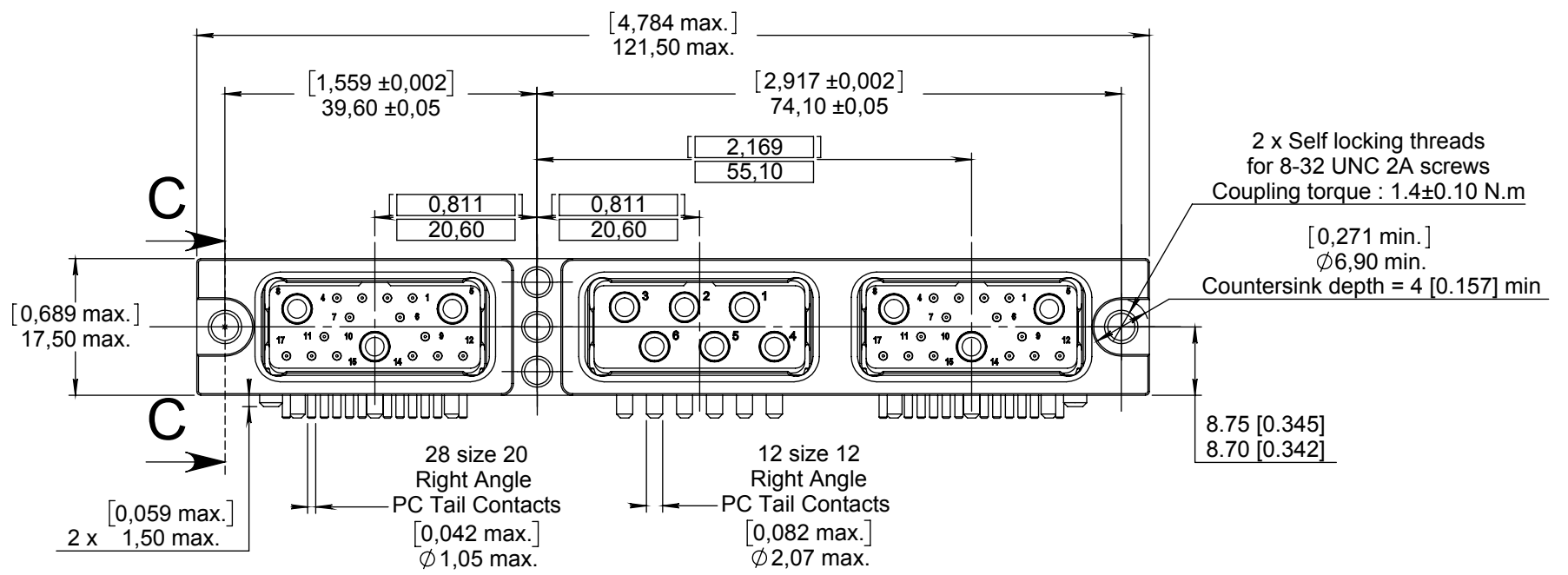
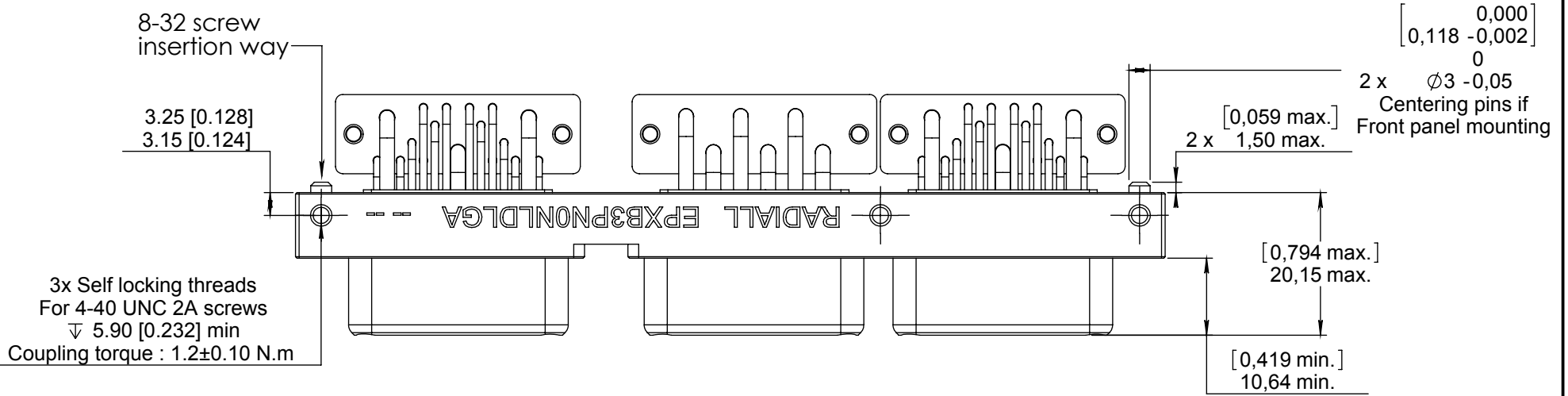


Series
EPXB

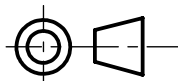
3 CAVITIES PLUG CONNECTOR ASSEMBLY KIT
RACK AND PANEL APPLICATION - FRONT OR LATERAL PANEL MOUNTING
WITH 2 INSERTS FOR 14 SIZE 20 & 3 SIZE 12 AND INSERT FOR 6 SIZE 12 PIN CONTACTS

Issue:
Jan. 14, 2019

Page
1/4



DIMENSIONS : mm (inch are given for information only)



Estimated weight : 87 g

CREATION PEN: NOM: LOPEZ C. DATE: Jan. 14, 2019 APPR.: WEIHS H.				
	Issue	Revisions	Name	Approved

EPXB3PN0NLDLGAEN

RADIALL PROPRIETARY INFORMATION

This document contains proprietary information and such information shall not be disclosed to any third party for any purpose whatsoever or used for manufacturing purposes without prior written agreement from RADIALL. This information is given as an indication. In the continual goal to improve our products, we reserve the right to make any modifications judged necessary.

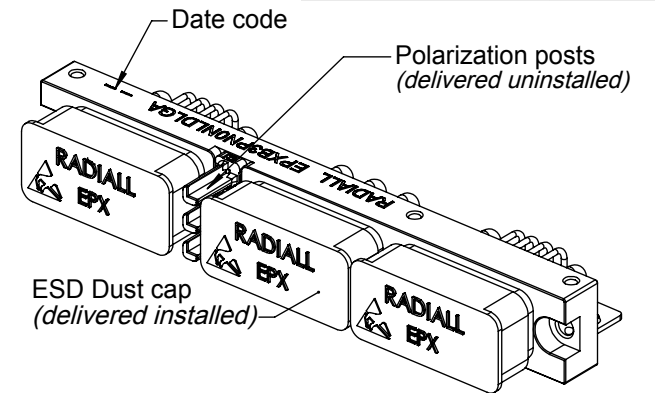
4112_9311

MATERIAL & FINISHES :

- SHELL : Aluminum alloy ; Nickel plated,
- INSERT RETENTION CLIP : Beryllium copper,
- INSERT : High grade thermoplastic or fiberglass filled thermosetting with metallic clips,
- CONTACTS : Copper alloy, gold over nickel,
- POLARIZATION POSTS : High grade thermoplastic,
- CENTERING PLATE : Glass Epoxy,
- HOLDING CAPS : PTFE or equivalent,
- ESD DUST CAP : Antistatic Thermoplastic.

CONNECTOR SUPPLIED WITH :

- 2 x Non-environmental insert for 14 size 20 & 3 size 12 pin contacts; P/N : EPXBN17PA, installed in cavities "A" and "C",
- 1 x Non-environmental insert for 6 size 12 pin contacts; P/N : EPXBN06PA, installed in cavity "B",
- 28 size 20 right angle PC tail pin contacts, length GA, installed,
- 12 size 12 right angle PC tail pin contacts, length GA, installed,
- 3 Polarization posts; P/N : 617980030, uninstalled,
- 3 ESD Dust caps; P/N : 617954004, installed on each cavity.

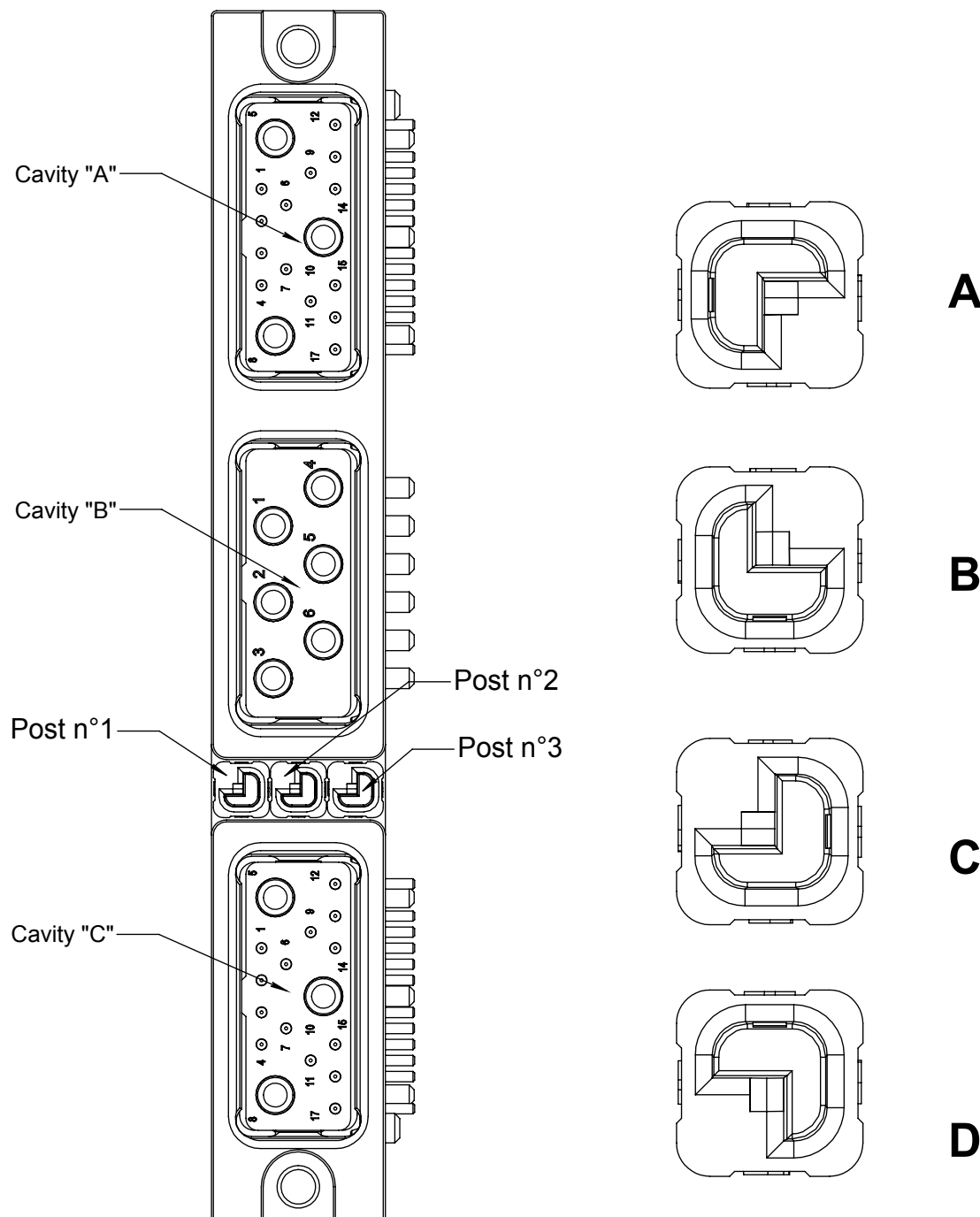


NOTES :

- To ensure electrical performances, the shell to shell bottoming has to be ensured between plug and receptacle connectors.
- Maximum misalignment allowed between plug & receptacle connectors is : $\pm 1,05$ max [0,041 max]

Polarization posts :

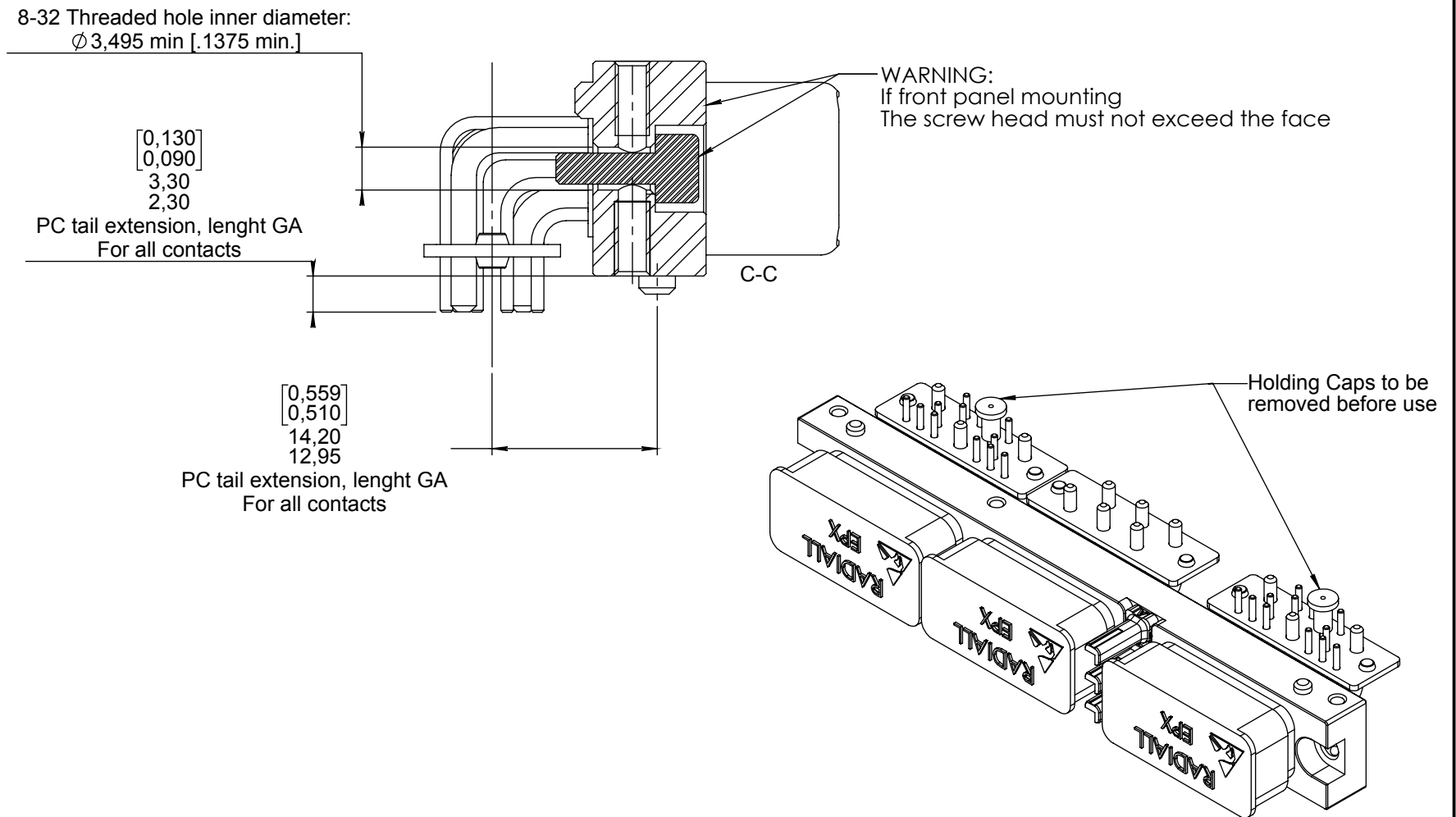
Connector is shown front side with polarization posts
Example : Code CCC shown



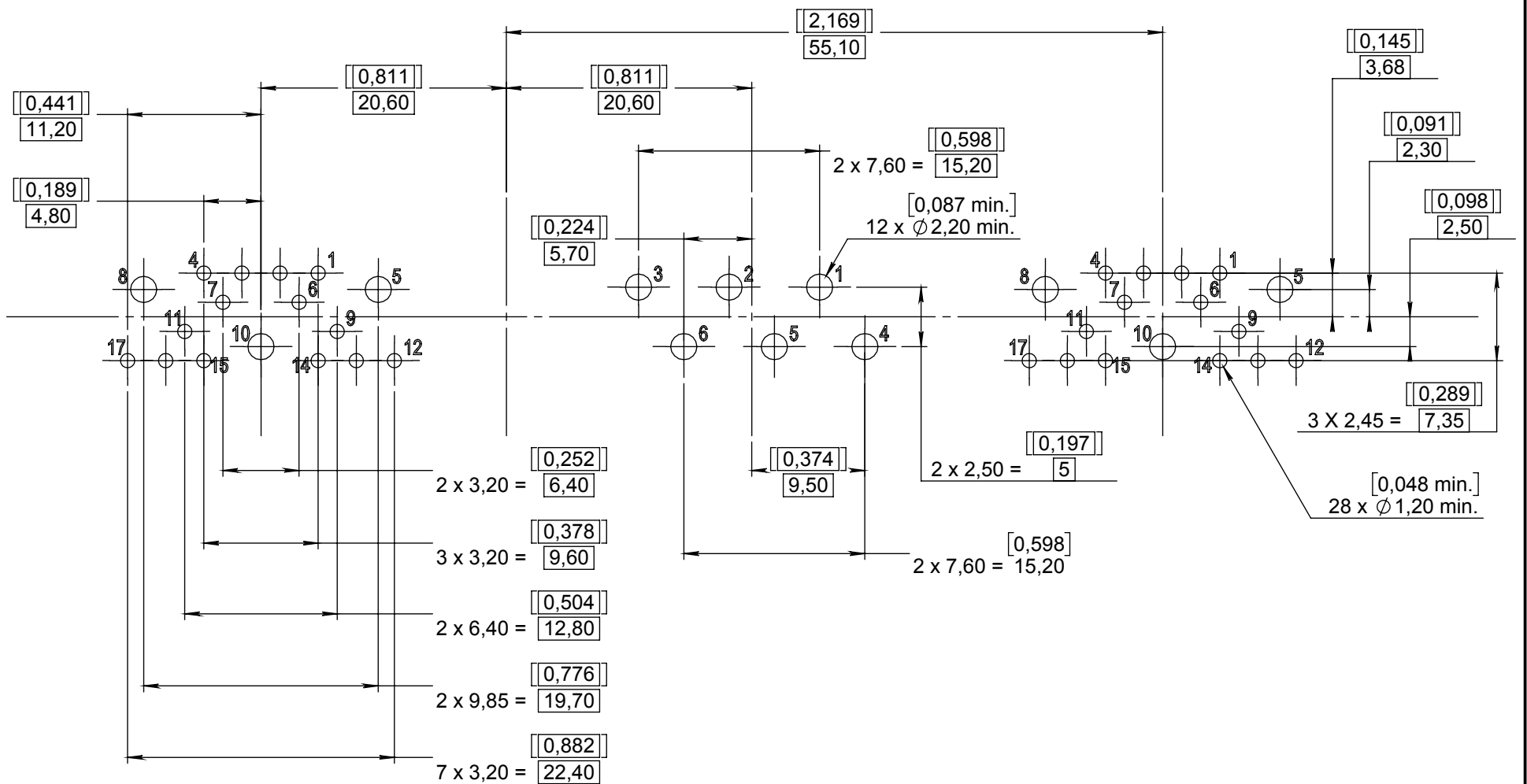
This document contains proprietary information and such information shall not be disclosed to any third party for any purpose whatsoever or used for manufacturing purposes without prior written agreement from RADIALL. This information is given as an indication. In the continual goal to improve our products, we reserve the right to make any modifications judged necessary.

4112_9311

PC TAIL EXTENSION :



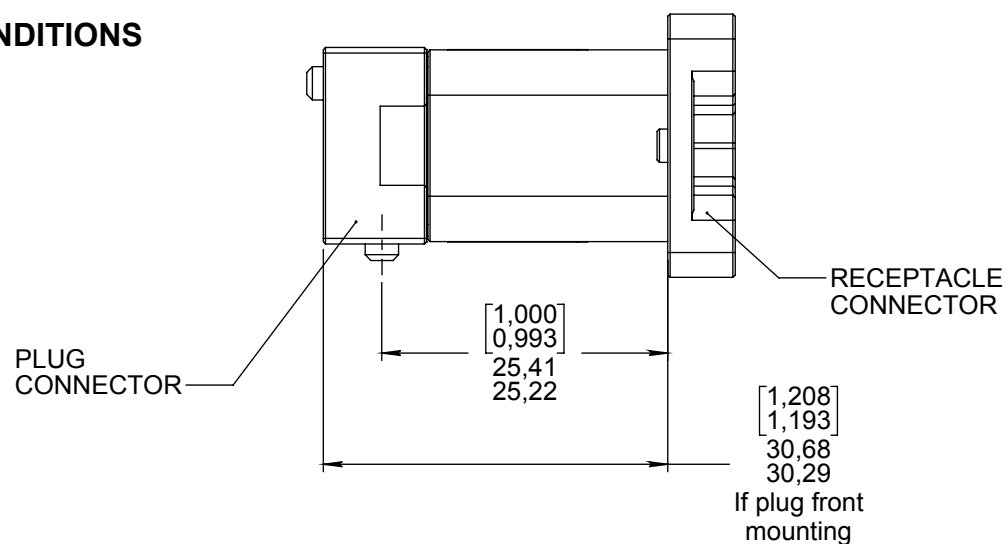
RECOMMENDED PC GRID PATTERN :
View from connector side.



This document contains proprietary information and such information shall not be disclosed to any third party for any purpose whatsoever or used for manufacturing purposes without prior written agreement from RADIALL. This information is given as an indication. In the continual goal to improve our products, we reserve the right to make any modifications judged necessary.

4112_9311

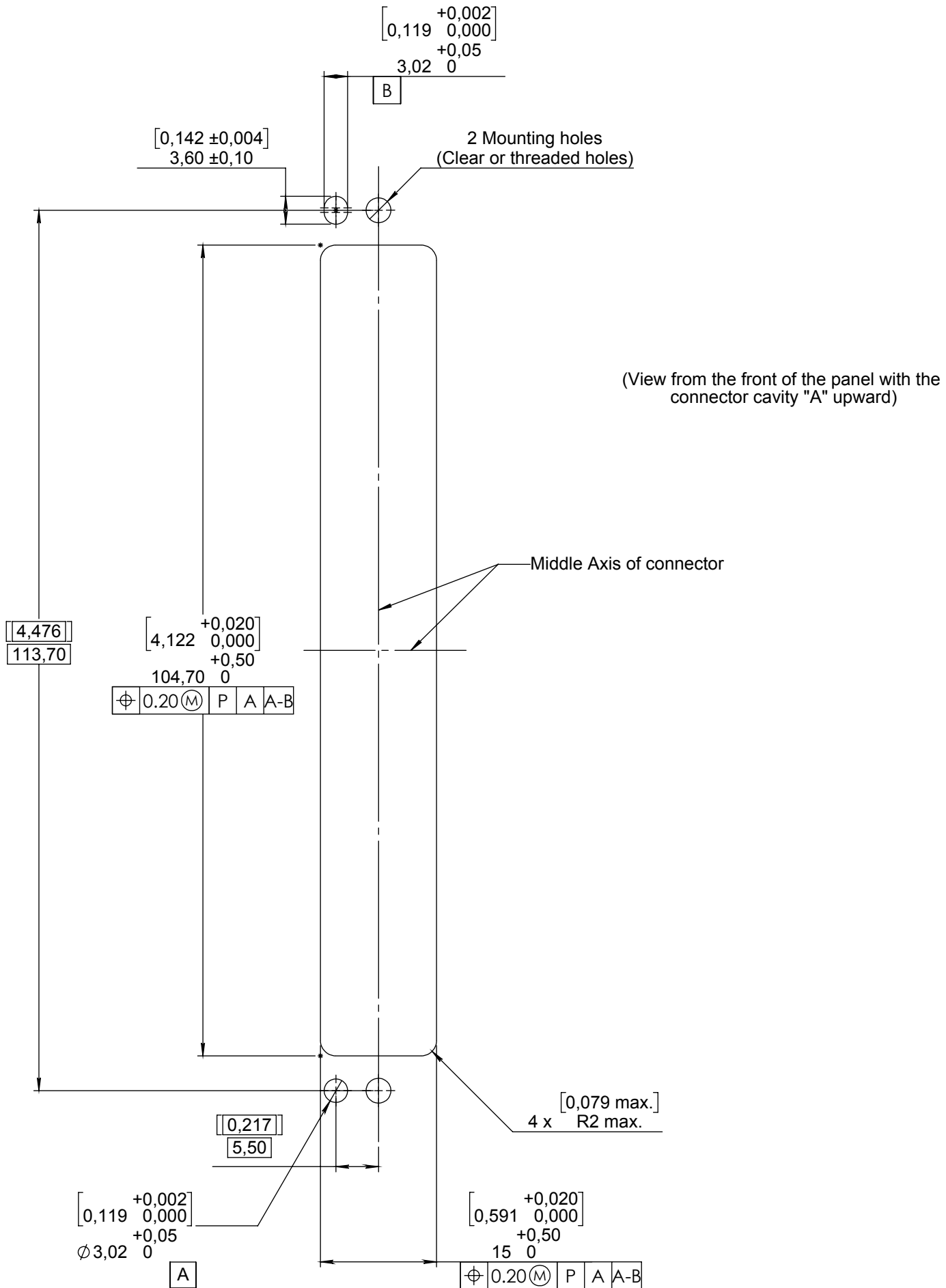
FULLY MATED CONDITIONS



RECOMMENDED PANEL CUT-OUT :

Recommended panel cut out if the connector is front mounted on a panel.
The connector can be installed either with two 8-32 screws tighten in the shell from the rear of the panel or with two screws tighten in the panel from the front of the connector (if this second option is used the outer diameter of the mounting screws has to be calculated according to the mounting dimension tolerances and the $\phi 3,495$ [0,1375] of the page 3 section view CC).

P = Panel face



This document contains proprietary information and such information shall not be disclosed to any third party for any purpose whatsoever or used for manufacturing purposes without prior written agreement from RADIAL. This information is given as an indication. In the continual goal to improve our products, we reserve the right to make any modifications judged necessary.

4112_9311