

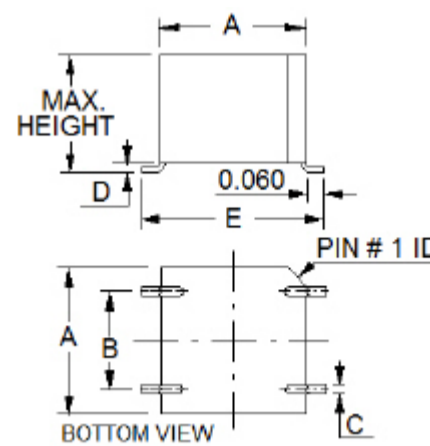
High Current Common Mode EMI Suppression Inductors

SURFACE MOUNT

PICO surface mount units utilize materials and methods to withstand extreme temperatures of vapor phase, I.R., and other reflow procedures without degradation of electrical or mechanical characteristics.

Specifications

- All units manufactured to Mil-PRF-27, Grade 5, Class S.
- Dielectric Strength...1500 Vrms
- Windings Balanced $\pm 1\%$
- Maximum ambient plus temperature rise: 130°C maximum
- Inductance Tolerance: $\pm 20\%$.
- Moisture Sensitivity Level: MSL3
- Terminals: Meets solderability per MIL-STD-202, Method 208.



TERMINALS ARE CLOCKWISE FROM PIN# 1
DIMENSIONS ARE IN INCHES. () = MM

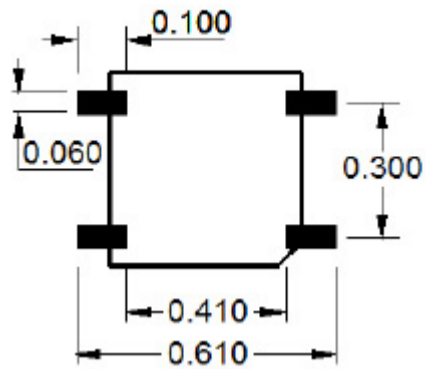
Pico's high current, small footprint inductors are well suited for use in high current DC-DC power supplies, AC-DC power supplies, and other types of electrical equipment where the elimination of Common Mode noise is required. Common Mode noise is noise that is generated on the power lines due to switching of MOSFETS, SCR, and the like. The noise being fed back into the system is significantly reduced by these inductors.

Inductance (Each Winding)	I RMS (Amps)			RDC (mOhms) Each WDG	Typical Leakage Inductance (Micro-Henry)	Size	Model Number	Prices 1-9 (US \$)
	Temp. Rise 60°C	Temp. Rise 40°C	Temp. Rise 25° C					
25 Micro-Henry	12.86	10.08	7.60	2.0		1	HCM1250	48.51
	18.68	14.64	11.04	1.38	< 5	2	HCM2250	48.51
	27.35	21.44	16.17	0.0921	< 5	3	HCM3250	53.33
50 Micro-Henry	9.09	7.13	5.37	4.0	< 5	1	HCM1500	48.51
	15.25	11.96	9.02	2.07	< 5	2	HCM2500	48.51
	25.62	20.08	15.15	1.05	< 5	3	HCM3500	53.33
100 Micro-Henry	9.09	7.13	5.37	4.0	< 5	1	HCM1101	48.51
	18.68	14.64	11.04	1.38	< 5	2	HCM2101	48.51
	30.31	23.76	17.92	0.75	< 5	3	HCM3101	53.33
150 Micro-Henry	10.33	8.10	6.11	3.1	< 5	1	HCM1151	48.51
	9.40	8.81	5.56	5.45	< 5	2	HCM2151	48.51
	12.12	13.72	10.35	2.25	< 5	3	HCM3151	53.33
200 Micro-Henry	9.09	7.13	5.37	4.0	< 5	1	HCM1201	48.51
	15.25	11.96	9.02	2.07	< 5	2	HCM2201	48.51
	13.55	10.63	8.01	3.75	< 5	3	HCM2301	53.33
400 Micro-Henry	7.42	5.82	4.39	6.0	< 5	1	HCM1401	48.51
	18.68	14.64	11.04	1.38	< 5	2	HCM2401	48.51
	19.56	15.34	11.57	1.8	< 5	3	HCM3401	53.33

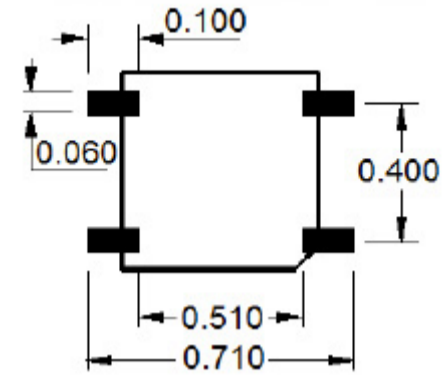
Size	Max. Height	A	B	C	D	E
1	.305 (7.75)	.450 (11.43)	.300 (7.62)	.025 (0.64)	.020 (0.51)	.570 (14.48)
2	.360 (9.14)	.550 (13.97)	.400 (10.16)	.025 (0.64)	.025 (0.64)	.670 (17.02)
3	.440 (11.18)	.650 (16.51)	.500 (12.70)	.030 (0.70)	.025 (0.64)	.770 (19.56)

Units are in inches. () = millimeters

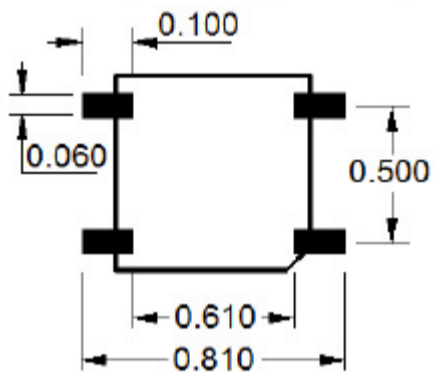
**RECOMMENDED LAND PATTERN DIMENSIONS
PICO HCM SERIES SIZE 1**



**RECOMMENDED LAND PATTERN DIMENSIONS
PICO HCM SERIES SIZE 2**



**RECOMMENDED LAND PATTERN DIMENSIONS
PICO HCM SERIES SIZE 3**



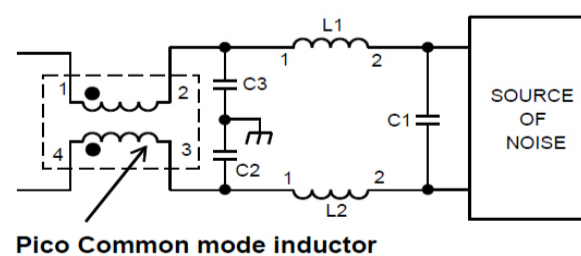
Ordering Instructions:

No minimum.
Net 30 days F.O.B. Pelham, NY

Delivery--stock to one week for sample orders.

- Minimum possible size
- 130° C operation (Ambient plus temperature rise)
- Windings balance $\pm 1\%$
- Dielectric strength...1500 Volts RMS

This is a typical circuit for EMI noise elimination. It consists of common mode and differential mode noise reduction filter.



**For immediate engineering assistance or to place an order:
Call Toll Free: 800-431-1064**

PICO Electronics, Inc.

143 Sparks Ave. Pelham, NY 10803-1810
Tel: 914-738-1400 or Fax: 914-738-8225

