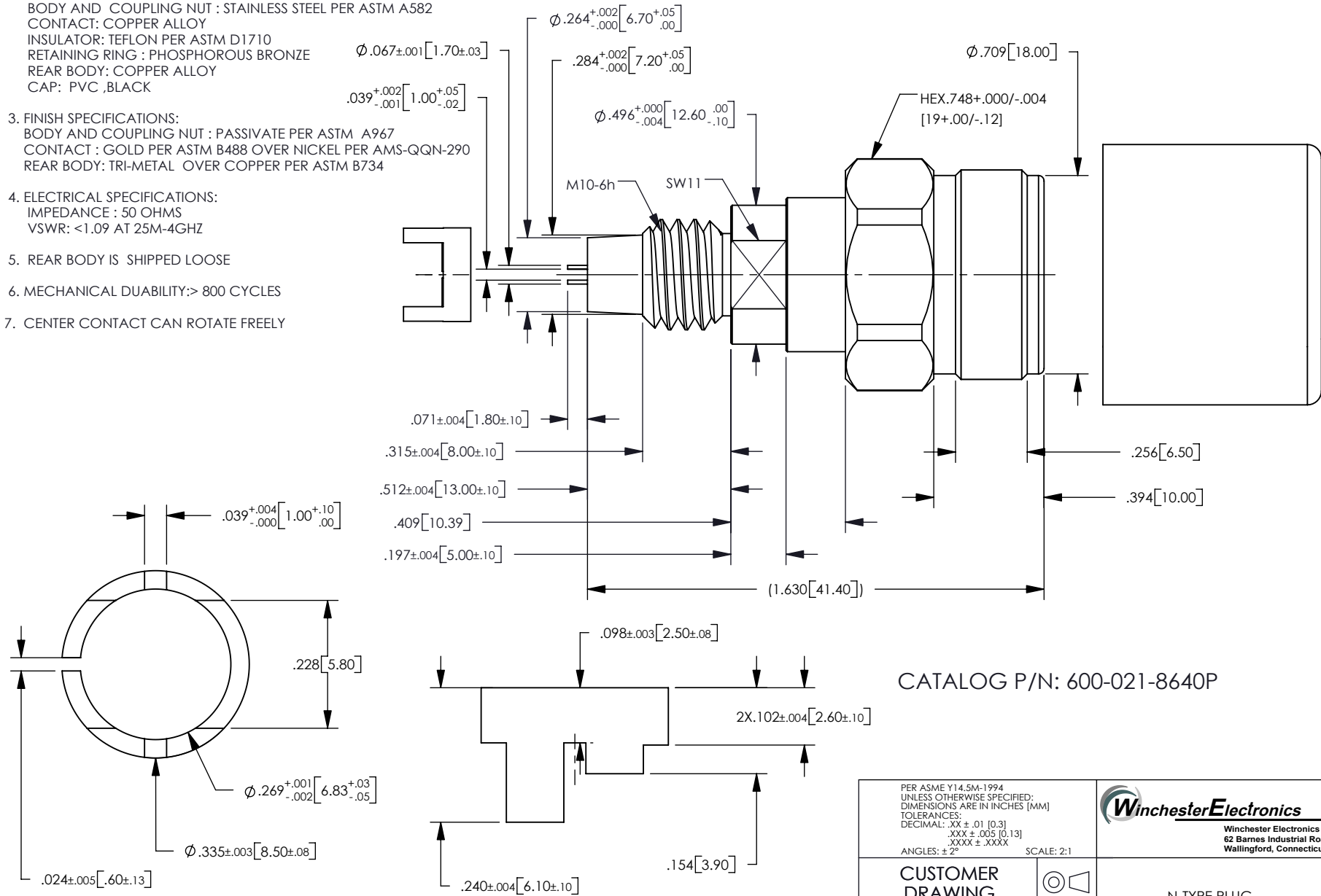


NOTES: UNLESS OTHERWISE SPECIFIED  
 1. FOR GENERAL SERIES SPECIFICATIONS, SEE SD60-0000.

2. MATERIAL SPECIFICATIONS:  
 BODY AND COUPLING NUT : STAINLESS STEEL PER ASTM A582  
 CONTACT: COPPER ALLOY  
 INSULATOR: TEFLON PER ASTM D1710  
 RETAINING RING : PHOSPHOROUS BRONZE  
 REAR BODY: COPPER ALLOY  
 CAP: PVC ,BLACK
3. FINISH SPECIFICATIONS:  
 BODY AND COUPLING NUT : PASSIVATE PER ASTM A967  
 CONTACT : GOLD PER ASTM B488 OVER NICKEL PER AMS-QQN-290  
 REAR BODY: TRI-METAL OVER COPPER PER ASTM B734
4. ELECTRICAL SPECIFICATIONS:  
 IMPEDANCE : 50 OHMS  
 VSWR: <1.09 AT 25M-4GHZ
5. REAR BODY IS SHIPPED LOOSE
6. MECHANICAL DUABILITY:> 800 CYCLES
7. CENTER CONTACT CAN ROTATE FREELY

| REV | DESCRIPTION    | BY DATE         | APPD |
|-----|----------------|-----------------|------|
| E   | PER ECR-ER5975 | CTC<br>01/04/08 | DW   |



CATALOG P/N: 600-021-8640P

|  |                  |   |                  |
|--|------------------|---|------------------|
| PER ASME Y14.5M-1994<br>UNLESS OTHERWISE SPECIFIED:<br>DIMENSIONS ARE IN INCHES [MM]<br>TOLERANCES:<br>DECIMAL: XX ± .01 [0.3]<br>.XXX ± .005 [0.13]<br>.XXXX ± .XXXX<br>ANGLES: ± 2° SCALE: 2:1 |                  | <br>Winchester Electronics Corporation<br>62 Barnes Industrial Road North<br>Wallingford, Connecticut 06492 |                  |
| <b>CUSTOMER DRAWING</b>  |                  | N-TYPE PLUG   |                  |
| DRAWN<br>CTC   | DATE<br>07/06/06 | APPROVED<br>DW  | DATE<br>08/10/06 |
| APPROVED<br>XXX  | DATE<br>XX/XX/XX | APPROVED<br>XXX   | DATE<br>XX/XX/XX |
| <b>A</b> SD600-021-8640P   |                  |   | SH1 OF 1         |
|  |                  |   | REV<br>E         |