

NOTES: (UNLESS OTHERWISE SPECIFIED)

1) INTERPRET DRAWING IN ACCORDANCE WITH ANSI Y14.5-1982.

2) ALL DIMENSIONS APPLY AFTER PLATING.

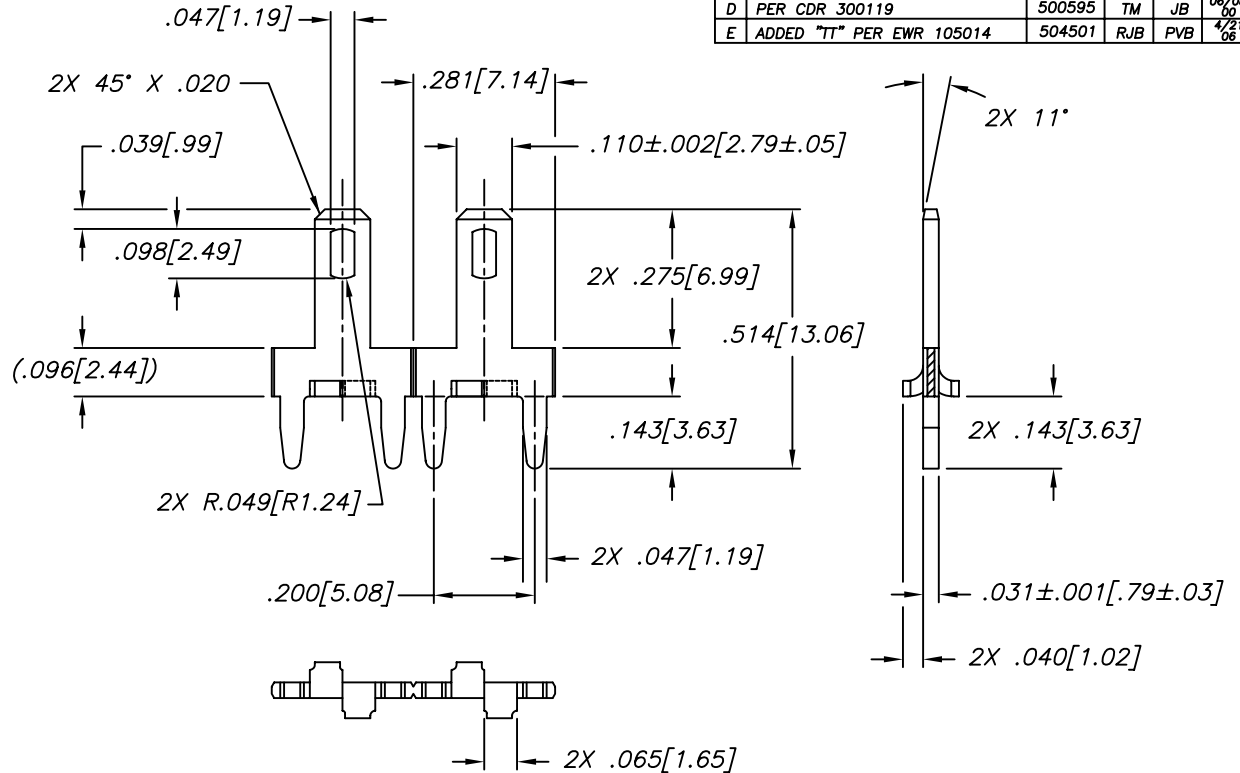
3) PART TO BE SUPPLIED ON A CONTINUOUS REEL AS SHOWN IN WINDING INSTRUCTIONS; ONE BREAK AND NO SPLICES ALLOWED WITHIN A REEL; QUANTITY OF PARTS PER REEL: 10,000.

4) SOLDERABILITY PER IPC/EIA/JEDEC J-STD-002, TEST A, CATEGORY 2.

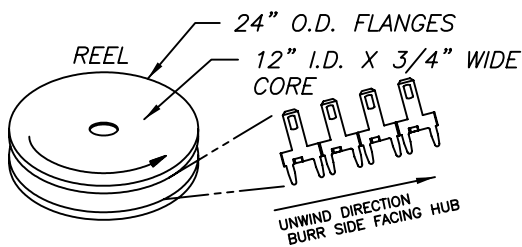
5) RECOMMENDED DRILLED HOLE SIZE: $\phi.055 \pm .001$;
WITH 1 oz. COPPER PLATING: $\phi.051 \pm .002$;
TIN/LEAD FINISHED HOLE SIZE: $\phi.050 \pm .002$

6) FINISH: AA = .000120"-.000200" 90/10 MATTE TIN/LEAD
OVER .000050"-.000100" NICKEL.
TT = .000160"-.000240" MATTE TIN (LEAD FREE)
OVER .000080"-.000100" NICKEL. (RoHS COMPLIANT).

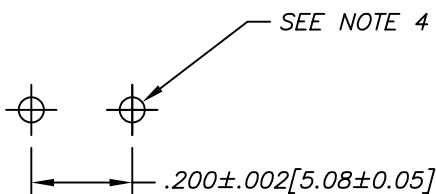
REV	REVISION RECORD	ECN	BY	APVD	DATE
B	PER CDR 990676	16914	TM	JB	10/20/99
C	PER CDR 300050	500198	TM	JB	02/03/00
D	PER CDR 300119	500595	TM	JB	06/08/00
E	ADDED "TT" PER EWR 105014	504501	RJB	PVB	4/21/06



3 WINDING INSTRUCTIONS:



RECOMMENDED PCB HOLE PATTERN



PART NUMBER	FINISH $\triangle 6$
7-V1026-002AA	AA
7-V1026-002TT	TT

This drawing and the information set forth hereon are the property of AutosplICE, Inc. and are to be held in trust and confidence. Publication, duplication, disclosure, or use for any purpose not expressly authorized in writing by AutosplICE, Inc. is prohibited.

MATERIAL:
C26000, BRASS, 1/2 HARD.

FINISH:
SEE TABLE.

TOLERANCES:
(UNLESS OTHERWISE SPECIFIED)
DIM'S. IN INCHES [MM]
DECIMAL:
XX = $\pm .01$ [0.3]
XXX = $\pm .005$ [0.13]
ANGULAR:
 $\pm 2^\circ$

autosplICE® AUTOSPLICE INC.
10121 Barnes Canyon Road
San Diego, California 92121
(858) 535-0077

THIRD ANGLE PROJECTION
DRAWN BY CVD
ENGINEERED BY BIANCA
DATE 4/06/99

TITLE
VERTICAL TERMINAL

SIZE	FSCM NO.	DRAWING NUMBER	REVISION
B	0AE89	C7-V1026-002[]	E

SCALE: 4:1 CAD FILE NO. C7-V1026-002[]e.DWG SHEET 1 OF 1

CUSTOMER DRAWING