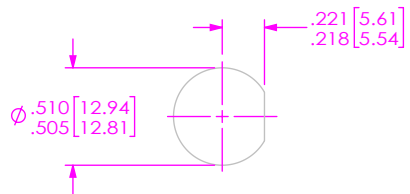


DO NOT SCALE FROM THIS PRINT



RECOMMENDED PANEL CUTOUT

DESIGNED & DIMENSIONED IN INCHES[MILLIMETERS]

PRF04-J-C-EP-270A-BS-1

SERIES  
-04: TNCA

GENDER  
-J: JACK

TYPE  
-C: CABLE

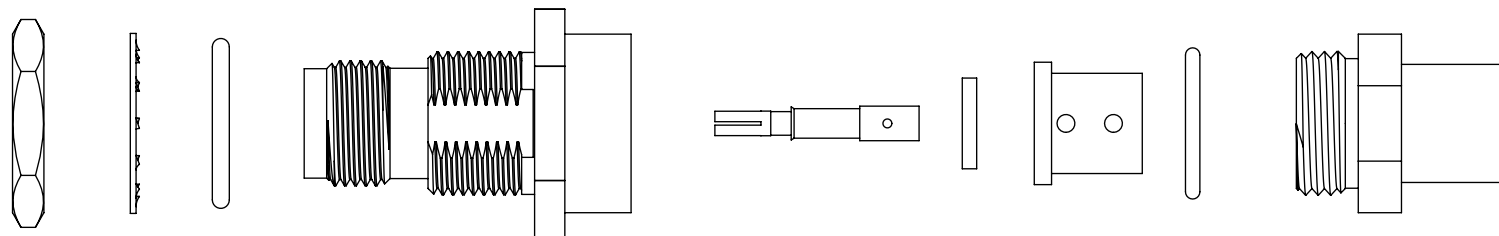
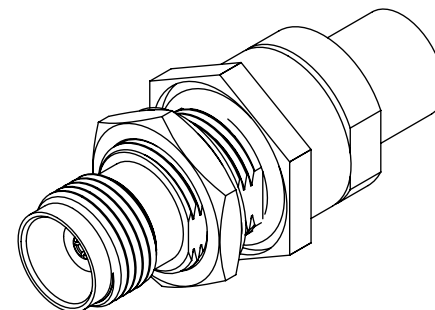
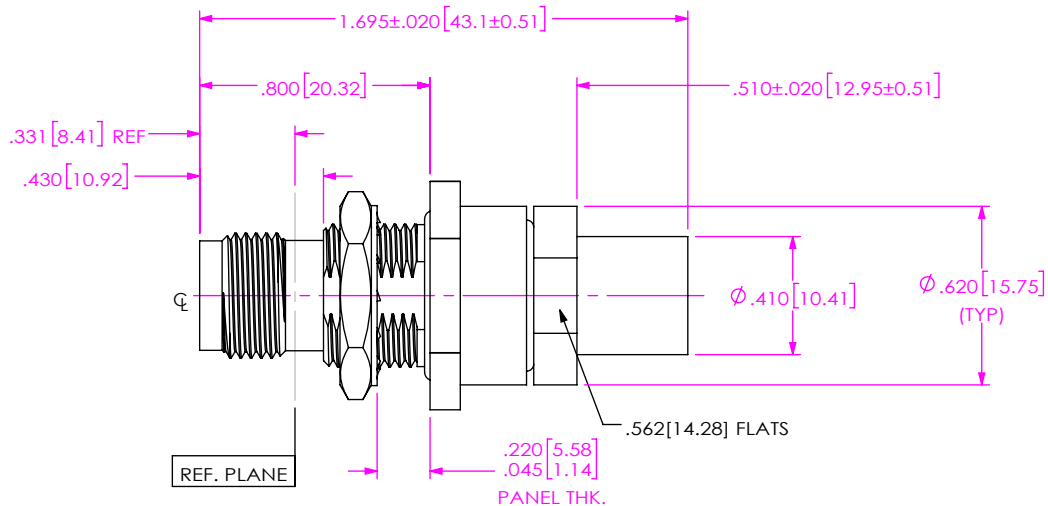
FINISH  
-EP: 50µ" EXTRA HEAVY GOLD CENTER CONTACT, PASSIVATED OUTER CONTACT

OPTION  
-1

TERMINATION  
-S: SOLDER CLAMP

ORIENTATION  
-B: BULKHEAD

CABLE TYPE  
-270A: DYNAWAVE DF218



EXPLODED VIEW  
NOT TO SCALE  
(FOR CLARITY ONLY)

NOTES:

- MATERIAL:  
BODY, LOCK WASHER, JAM NUT, CLAMP NUT & BUSHING: STAINLESS STEEL.  
CONTACT: BERYLLIUM COPPER.  
SOLDER FERRULE: BRASS.  
O-RINGS: SILICONE RUBBER.  
INSULATOR: PTFE.  
DIELECTRIC STOP: ULTEM 1000.
- FINISH:  
BODY, LOCK WASHER, JAM NUT, CLAMP NUT & BUSHING: PASSIVATED.  
CONTACT & SOLDER FERRULE: GOLD OVER NICKEL PLATE,  
50 µIN MIN GOLD OVER 50 µIN MIN NICKEL.
- PCI P/N: 3536.

UNLESS OTHERWISE SPECIFIED, DIMENSIONS ARE IN INCHES.  
TOLERANCES ARE:  
DECIMALS ANGLES  
.XX: ±.01 [0.3] 1°  
.XXX: ±.005 [0.13]  
.XXXX: ±.0005 [0.013]

**PROPRIETARY NOTE**  
THIS DOCUMENT CONTAINS CONFIDENTIAL AND PROPRIETARY INFORMATION AND ALL DESIGN, MANUFACTURING, REPRODUCTION, USE, PATENT RIGHTS AND SALES RIGHTS ARE EXPRESSLY RESERVED BY SAMTEC, INC. THIS DOCUMENT SHALL NOT BE DISCLOSED, IN WHOLE OR PART, TO ANY UNAUTHORIZED PERSON OR ENTITY NOR REPRODUCED, TRANSFERRED OR INCORPORATED IN ANY OTHER PROJECT IN ANY MANNER WITHOUT THE EXPRESS WRITTEN CONSENT OF SAMTEC, INC.



520 PARK EAST BLVD, NEW ALBANY, IN 47150  
PHONE: 812-944-6733 FAX: 812-948-5047  
e-Mail info@SAMTEC.com code 55322

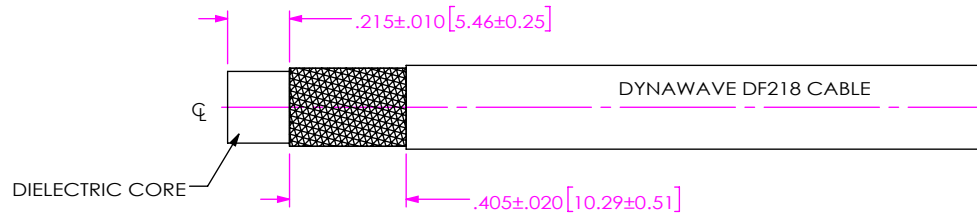
DO NOT SCALE DRAWING

SHEET SCALE: 3:2

DESCRIPTION: TNCA BULKHEAD JACK, SOLDER CLAMP FOR DYNAWAVE DF218 CABLE

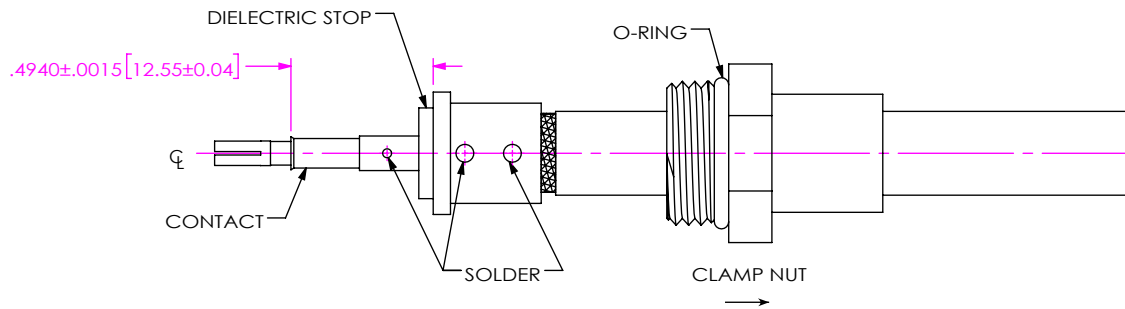
DWG. NO. PRF04-J-C-EP-270A-BS-1

BY: EVE L 01/27/2021 SHEET 1 OF 2



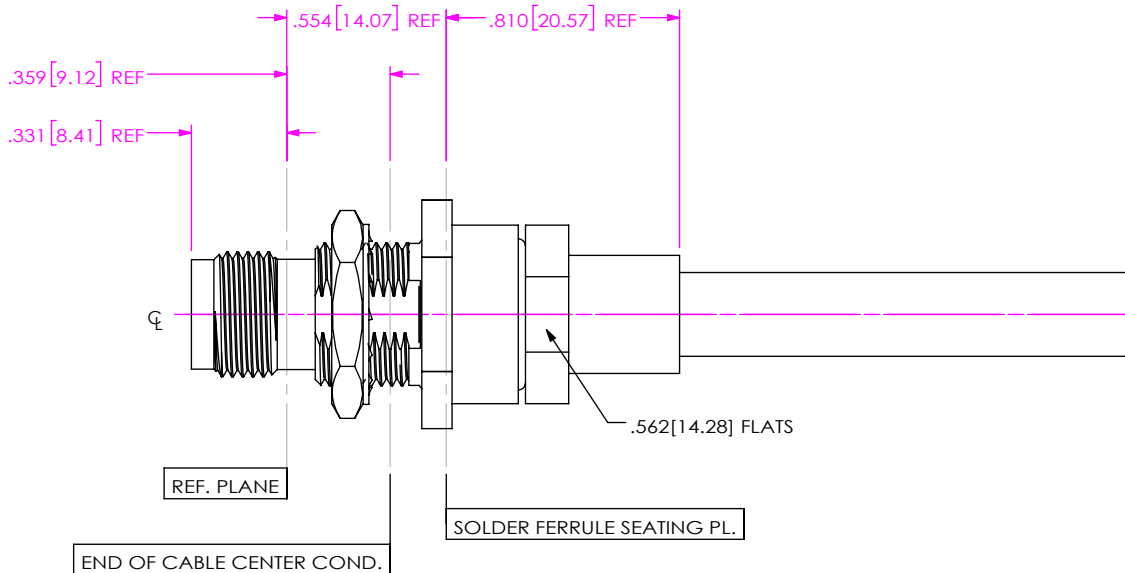
1A. TRIM CABLE TO EXPOSE DIELECTRIC CORE AND BRAIDS AS SHOWN.

IN-PROCESS 1




- 2A. SLIDE CLAMP NUT OVER CABLE AS SHOWN.
- 2B. INSERT CABLE INTO FERRULE UNTIL BRAIDS SEAT AND SOLDER TO FERRULE WHERE SHOWN.
- 2C. TRIM DIELECTRIC CORE FLUSH WITH FACE OF SOLDER FERRULE.
- 2D. SLIDE DIELECTRIC STOP ONTO CABLE CENTER CONDUCTOR AND SOLDER CONTACT FLUSH TO STOP TO DIMENSION SHOWN.

IN-PROCESS 2



3A. INSERT CABLE/CONTACT SUB-ASSEMBLY INTO CONNECTOR UNTIL SEATED AND TIGHTEN CLAMP NUT TO 25-35 IN-LBS.

IN-PROCESS 3

<p>DO NOT SCALE DRAWING</p> <p>SHEET SCALE: 3:2</p>	<p><b>PROPRIETARY NOTE</b></p> <p>THIS DOCUMENT CONTAINS CONFIDENTIAL AND PROPRIETARY INFORMATION AND ALL DESIGN, MANUFACTURING, REPRODUCTION, USE, PATENT RIGHTS AND SALES RIGHTS ARE EXPRESSLY RESERVED BY SAMTEC, INC. THIS DOCUMENT SHALL NOT BE DISCLOSED, IN WHOLE OR PART, TO ANY UNAUTHORIZED PERSON OR ENTITY NOR REPRODUCED, TRANSFERRED OR INCORPORATED IN ANY OTHER PROJECT IN ANY MANNER WITHOUT THE EXPRESS WRITTEN CONSENT OF SAMTEC, INC.</p>	
	 <p>520 PARK EAST BLVD, NEW ALBANY, IN 47150                  PHONE: 812-944-6733 FAX: 812-948-5047                  e-Mail: info@SAMTEC.com code 55322</p>	
	<p>DESCRIPTION: TNCA BULKHEAD JACK, SOLDER CLAMP FOR DYNAWAVE DF218 CABLE</p> <p>DWG. NO. PRF04-J-C-EP-270A-BS-1</p> <p>BY: EVE L 01/27/2021 SHEET 2 OF 2</p>	