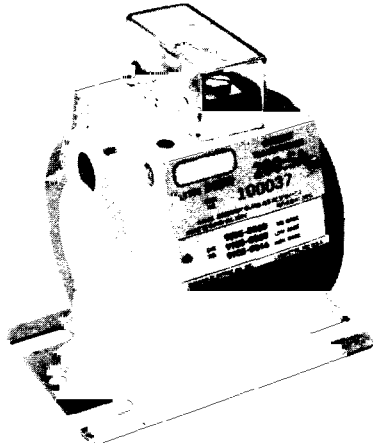


MINIATURE WINDOW TYPE CURRENT TRANSFORMER

TYPE DCBW

FOR LOW VOLTAGE METERING INSTALLATIONS



600 volt class, 10Kv BIL, 60 Hz
0.3 ANSI accuracy Class at B0.2 or B0.5
Indoor/outdoor construction
Color-coded
Polarity marks molded into body

MOLDED EPOXY ENCAPSULATION

The Type DCBW current transformer is molded in a tough, durable epoxy compound. The epoxy is stable from -30 °C to 105 °C, does not crack or chip do to temperature cycling, and is inert to all enviroments encountered in years of testing and worldwide use.

OPTIONAL SHORTING SWITCH AND SEALABLE CAP

A permanent shorting switch and a sealable terminal cap are provided on all DCBW current transformer models. The terminal cap can be sealed only if the shorting switch is in the open position.

TYPE DCBW
MINIATURE CURRENT TRANSFORMER

BURDEN 0.2 - 0.5

CURRENT RATING PRI:SEC AMPERES	CONTINUOUS CURRENT THERMAL RATING FACTOR AT 30 °C AMBIENT	COLOR	BURDEN RATING (OHMS)	WINDOW DIAMETER (INCHES)	CATALOG NUMBERS		
					NO BASE	LOW BASE	HIGH BASE
200:5	2.0	Red	0.2	1 9/16	9706-8039	9706-8040	9706-8041
				2	9706-8000	9706-8008	9706-8016
			0.5	1 9/16	9706-8001	9706-8009	9706-8017
300:5	2.0	Orange	0.2	1 9/16	9706-8033	9706-8034	9706-8035
			0.5		9706-8030	9706-8031	9706-8032
400:5	2.0	Yellow	0.2	2	9706-8002	9706-8010	9706-8018
			0.5		9706-8003	9706-8011	9706-8019
500:5	2.0	Green	0.2	2	9706-8036	9706-8037	9706-8038
			0.5		9706-8027	9706-8028	9706-8029
600:5	2.0	Blue	0.2	2	9706-8004	9706-8012	9706-8020
			0.5		9706-8005	9706-8013	9706-8021
800:5	1.5	Gray	0.2	1 3/4	9706-8006	9706-8014	9706-8022
			0.5		9706-8007	9706-8015	9706-8023

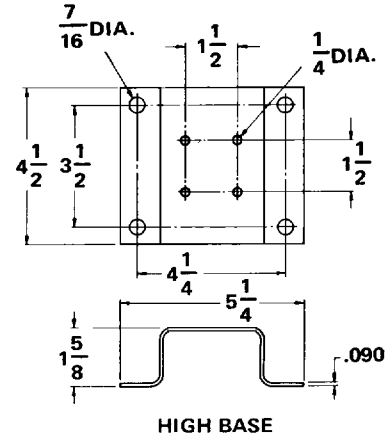
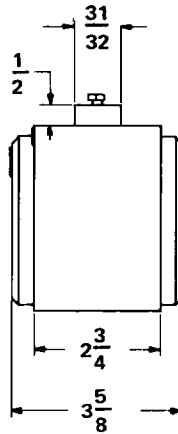
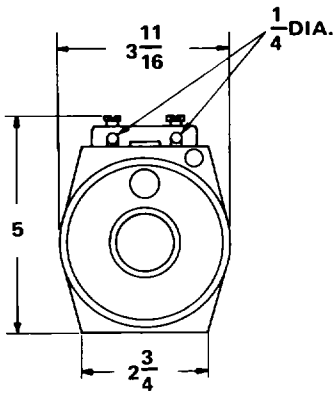
ANINS002

MINIATURE WINDOW TYPE CURRENT TRANSFORMER

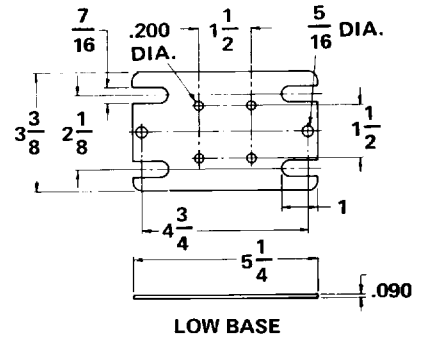
TYPE DCBW

FOR LOW VOLTAGE METERING INSTALLATIONS

DIMENSIONS



HIGH BASE

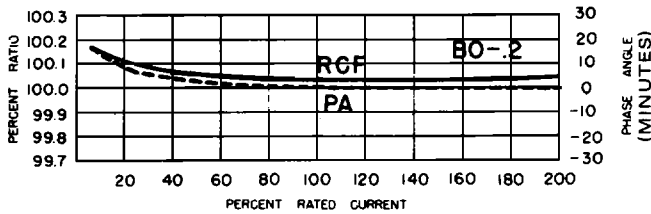


LOW BASE

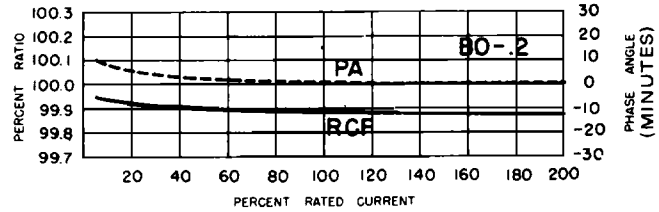
RATIO	SHIPPING WEIGHT		
	NO BASE	LOW BASE	HIGH BASE
400:5 500:5	5¾	6	6¾
ALL OTHER RATIOS	5	5¼	6

PERFORMANCE CURVES

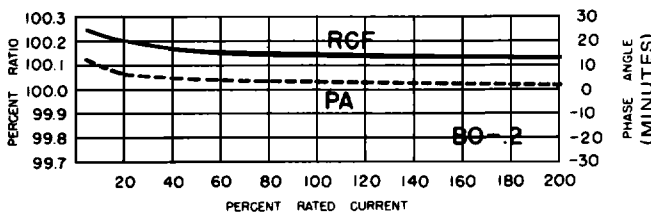
Current Ratio 200:5 Amperes



Current Ratio 400:5 Amperes



Current Ratio 600:5 Amperes



Current Ratio 800:5 Amperes

