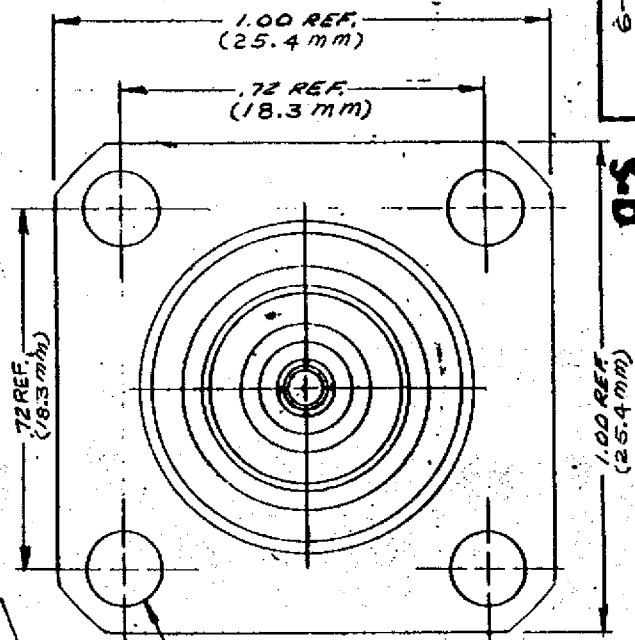
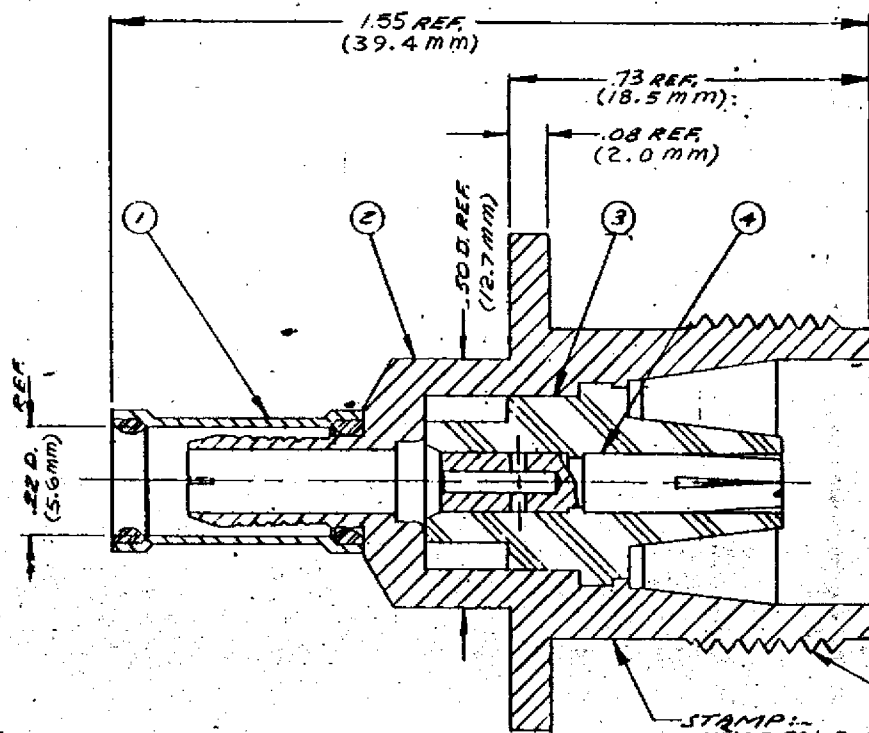


DASH NO	DESCRIPTION	MADE FROM
---------	-------------	-----------



STAMP:-
KINGS 821-2-9

NOTES:

- FOR USE WITH RG-142B, 223 & 400/U CABLE.
- FOR CABLE TRIMMING USE KTI-160 & KTD-208.
- FOR FORMING USE CRIMP DIE SIZE 101.
- FOR CABLING INSTRUCTIONS SEE CP-540G.
- ITEM 4 TO BE SUPPLIED UNASSEMBLED.
- ITEMS 1 & 2 TO HAVE TR-5 FINISH.

REVISIONS

ISSUE	SHAWDS
0	ER 3014 2 KH 9SEP88

WAS: E-15254

REP: BOEING

FINISH

SPEC.

MATL.

SPEC.

SC PANEL JACK

DRAWN: KH DATE: 9SEP88

APP: MJB DATE: 15SEP88

KINGS ELECTRONICS
14 48 HARBORLAND ROAD
TUCKAHOE, N. Y. 10780

UNLESS OTHERWISE SPECIFIED:

- | | |
|--|--|
| 1. TOLERANCES: FRACTIONS & 2 PLACE DECIMALS ± .010 | 2. REMOVE ALL BURRS. BREAK SHARP EDGES .008 MAX. |
| 3 PLACE DECIMALS ± .004 | 3. NO FILLETS PERMITTED. |
| 4. ANGLES ± 0° 30' | 4. SURFACE ROUGHNESS #3 MICROINCHES RMS MAX. |
| 5. 1.1 R CONCENTRICITY OF ANY 2 DIAMETERS MAY NOT EXCEED HALF THE SUM OF THEIR TOLERANCES. | 5. ALL DIMENSIONS PRIOR TO PLATING. |

ITEM	REQ'D	DESCRIPTION	PART NO.
4	1	ECAPTIVE CRIMP CONTACT	1-842-8-MA9
3	1	INSULATOR	
2	1	K-GRIP BODY	
1	1	W/P K-GRIP SLEEVE	C-59-218-2-M06

1821-2-9