

product: DELPHI PN 13580470  
 material: CUNI3SI1MG  
 surface: AU  
 material thickness: 0,25 mm  
 cross section [mm<sup>2</sup>]: 0,5 | 0,75

strip length: 3,40 mm  
 cable type: FLRY-B  
 insulation  $\varnothing$  [mm]: 1,40 - 1,90  
 seal:

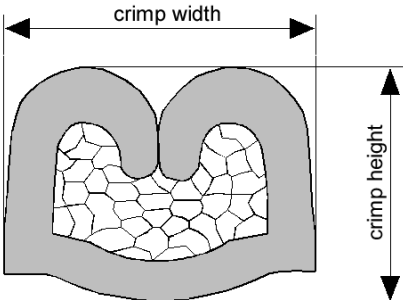
**Uncontrolled  
Copy**  
For Information only!

conductor dimension					crimp dimension [mm]					
cable type	cross sect. [mm <sup>2</sup> ]	struct. n x d [mm]	insul. diam. [mm]	tear-out force [N]	core		insulation			
					height $\pm$ 0,05	width $\pm$ 0,10	height $\pm$ 0,10	width $\pm$ 0,10	height $\pm$ tol.	width $\pm$ tol.
FLRY-B	0,5	16 x 0,21	1,50	80	1,05	1,65	1,80	2,00		
FLRY-B	0,75	24 x 0,21	1,80	120	1,15	1,65	2,00	2,05		

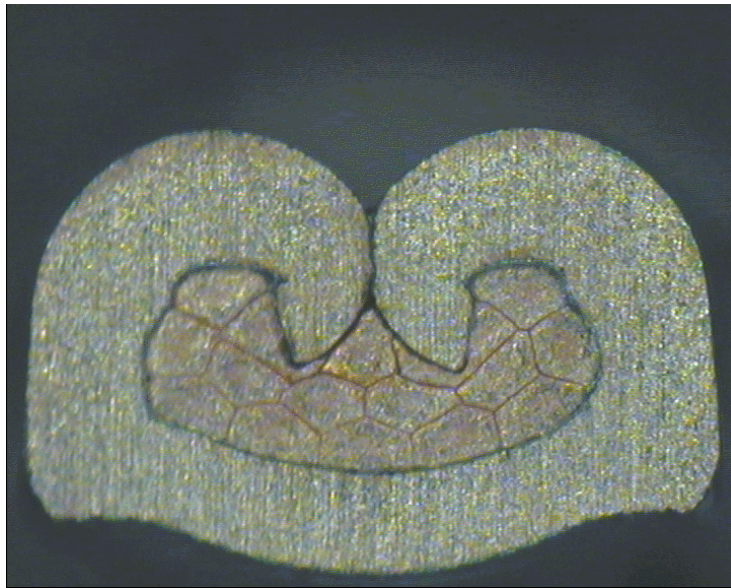
core:  
 C-1.60-2.5-7.5-A  
 DPN 10882361

insulation:  
 IS-2.00-2.0-6  
 DPN 10713528

anvil:  
  
two piece anvil:  
 AC-1.60-2.75-A  
 DPN 10764132  
 AI-2.00-3.0-0.2  
 DPN 10764198



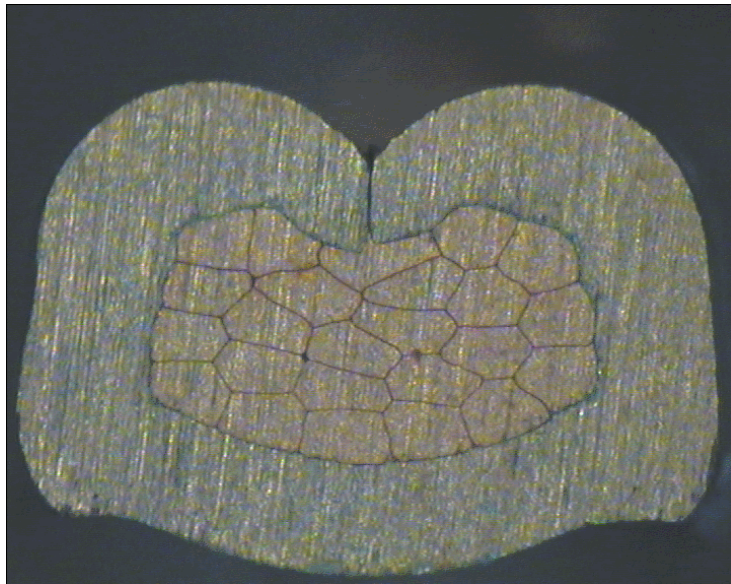
DELPHI PN 13580470



cable:  
 $0,50 \text{ mm}^2 = 16 \times 0,21 \text{ mm}$

crimp height:  
1,05 mm

crimp width:  
1,65 mm



cable:  
 $0,75 \text{ mm}^2 = 24 \times 0,21 \text{ mm}$

crimp height:  
1,15 mm

crimp width:  
1,65 mm