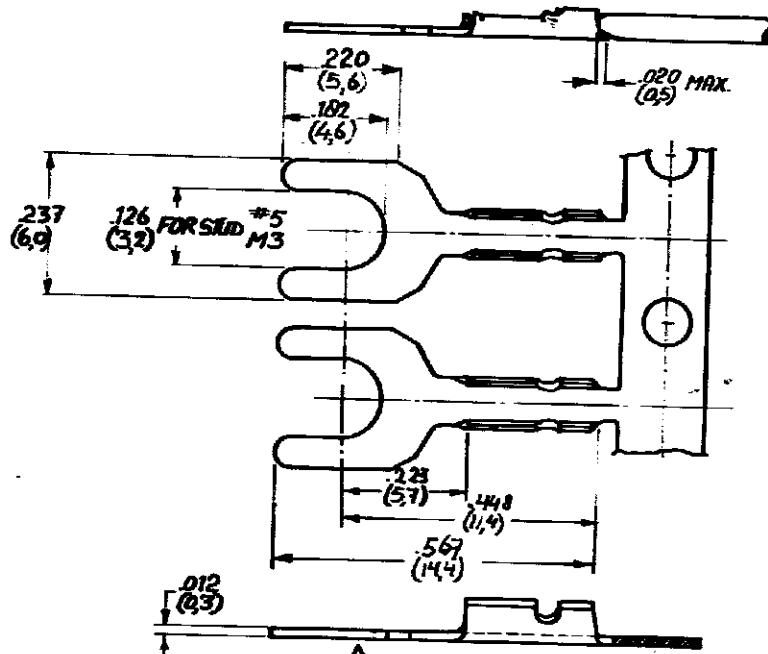
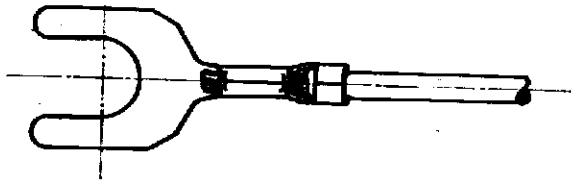


DRAWING MADE IN AMERICAN PROJECTION

NUMBER C-160716



- 1 FOR USE ON STANDARD APPLICATORS (RIGHT-LEFT FEED)
- 2 FOR USE ON MINIATURE APPLICATORS (LEFT-RIGHT FEED)

DIMENSIONS IN PARENTS TO NO SCALE PRINT

160716-7	BRASS	PRE-NI	2
160716-6	BRASS	PRE-NI	1
160716-4	BRASS		2
160716-3	BRASS	TIN	1
160716-2	BRASS	NICKEL	1
160716-1	BRASS		1

CUSTOMER COPY FOR REFERENCE ONLY

© 1971 BY AMP-HOLLAND N.V. ALL RIGHTS RESERVED A-MP PRODUCTS COVERED BY PATENTS AND/OR PATENTS PENDING.



ORDER NO.	MATERIAL	PLATING	NOTE
DATE	DATE	DATE	DATE

WIRE RANGE 2.35-1110 CMA 0.14-0.56 mm (0.2-1.3)	WIRE RANGE 0.15-0.55 DIA (0.2-1.3)	FIRST USED
SCALE 4:1	LOC H	SIZE A
NO C-160716		REV F

NAME SPADE with insulation support