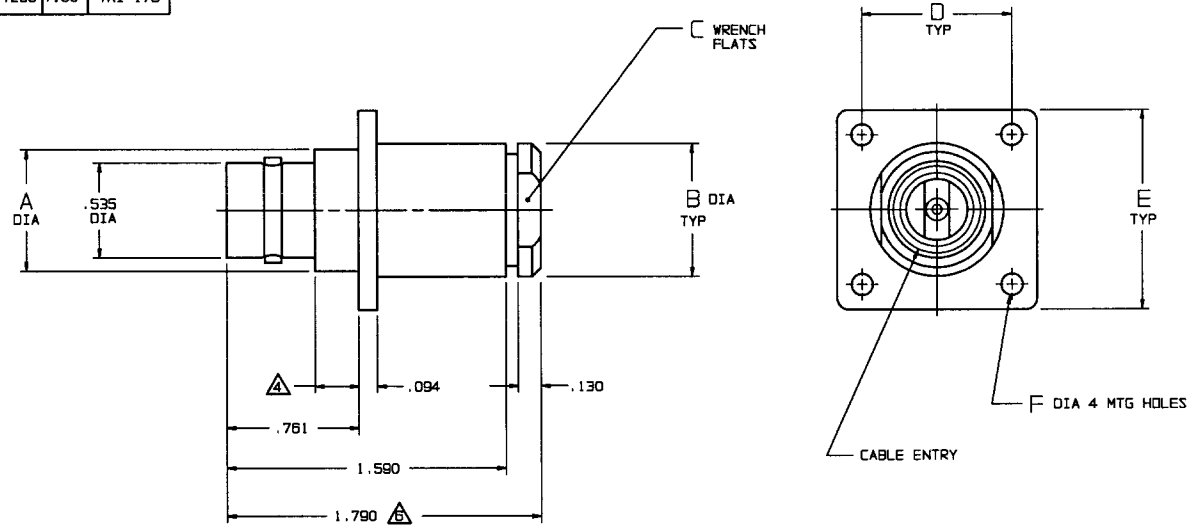


ALL INDICATES ORIGINAL

DISK #	DWG SIZE	DATA CONTAINED IN THIS DOCUMENT IS PROPRIETARY TO TROMPETER ELECTRONICS INC AND SHALL NOT BE DISCLOSED, COPIED OR USED FOR PROCUREMENT OR MANUFACTURE WITHOUT EXPRESS WRITTEN PERMISSION.	REVISIONS		305-0039	SH 1
J15	C		REV	ED	DESCRIPTION	DATE
			P	10272	.761 WAS .756	DKC <i>Bm</i> RQ, 5/21/93

DASH NO	CABLES ACCOMMODATED	A DIA	B DIA	C FLATS	D DIM	E DIM	F DIA	ASSEMBLE PER
-7	TRC-50-2/TRC-75-2							TAI-175
-8	8227 BELDEN							
-9	TWC-78-2, RG-108 TWC-124-2							TAI-116
-10	754E W.E.CO., RG-22							
-11	760A W.E.CO.	.685	.750	.625	.844	1.125	.120	
-12	16 PEVL W.E.CO.							TAI-131
-13	TRF-59 TIMES							
-13A	8232 BELDEN							
-14	21-529 ESSEX 8233 BELDEN							TAI-175
-14A	TRC-50-4A							
-15	21-583 ESSEX	.933	.995	.875	.920	1.250	.150	
-16	21-950 ESSEX							TAI-116
-26	275-9962 MICRODOT							TAI-175
-29	TWC-124-1A							TAI-116
-32	TRC-50-1	.685	.750	.625	.844	1.125	.120	
-42	21-204 ESSEX							TAI-175
-46	9860 BELDEN							
-54	89207 BELDEN							TAI-116
-61	5012W5812 RAYCHEM	.933	.995	.875	.920	1.250	.150	
-62	7518A0811 RAYCHEM							TAI-175

INCH	MM
.005	0.13
.094	2.39
.120	3.05
.130	3.30
.150	3.81
.250	6.35
.535	13.59
.625	15.88
.685	17.40
.750	19.05
.756	19.20
.844	21.44
.875	22.23
.920	23.37
.933	23.70
.995	25.27
1.125	28.58
1.250	31.75
1.590	40.39
1.790	45.47



-10 SHOWN

- ▲ DIM IS MAX WHEN ASSEMBLED TO CABLE
- 5. CONCENTRIC TWINAX/TRIAX "C" STYLE BULKHEAD FLANGE MOUNT CABLE RECEPTACLE W/PIN CENTER CONTACT
- ▲ MAX PANEL THK .250
- 3. INTERFACE: TCS-BJBO
- 2. FINISH: TFS-1A (NICKEL)
- 1. ALL DIM ARE IN INCHES

QTY	DESCRIPTION	PART NUMBER	ITEM
TOL UNLESS SPECIFIED .XX ± .XXX ± .005 .XXXX ± ANGLES ±	<b>TROMPETER ELECTRONICS, INC.</b>	BJ89F	
DWN DKC 5-24-93	MATERIAL	CODE IDENT	DRAWING NO.
CHK <i>Bm</i> 5-26-93		14949	305-0039
ENGR			REV P
APPR <i>RQ</i> 5-26-93	SCALE 2/1	DATE 4/3/70	SHEET 1 OF 2