



- DC-6.5 GHz
- DC-12.4 GHz
- Ruggedized
- 100K Cycles

RF Characteristics

Frequency GHz	VSWR (max)	Isolation dB (min)	Ins. Loss dB (max)
DC-1	1.20	60	0.15
1-4	1.35	60	0.25
4-8	1.45	60	0.35
8-12	1.50	60	0.50

Note: Performance applies to N and TNC type connectors. Consult with factory for other performances.

Specifications

Operating Voltage (across temperature range):

28 Vdc (20-30 Vdc)

Coil Current (max. @ nom. Vdc & 20°C)*:

28 Vdc 650 mA

Switching Time:

20 ms maximum

Operating Temperature:

-40°C to +85°C

Mechanical Life Cycles:

100,000 minimum

Vibration, Operating:

20g's sine/random

Mechanical Shock, Non-Operating:

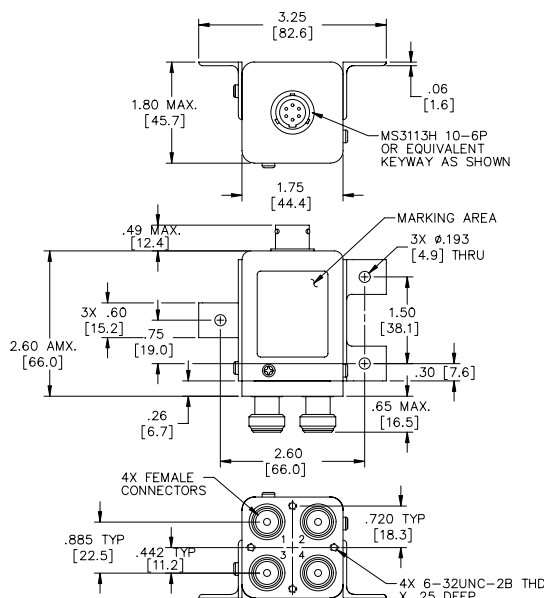
50G, 1/2 Sine, 11 ms

Nominal Weight:

12 oz. (340 g.)

* Performance varies depending on selected options.

Mechanical



300C00100 Shown
For Electrical Schematic, see page # 2-12

Part Number Selector

