

Precision Sub-Miniature 5.0x3.2mm TCXO / VCTCXO



2111 Comprehensive Drive
Aurora, Illinois 60505
Phone: 630-851-4722
Fax: 630-851-5040
www.conwin.com
US Headquarters:
630-851-4722
European Headquarters:
+353-61-472221

Designed for Telecom Applications

Description

The Connor-Winfield 5.0x3.2mm Temperature Compensated Crystal Oscillators and Voltage Controlled Temperature Compensated Crystal Oscillators are designed for use in applications requiring tight frequency stability in a small package. Through the use of Analog Temperature Compensation, this device is capable of holding sub 1-ppm stabilities over wide temperature ranges.



Features:

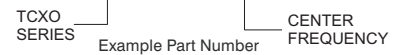
- 3.3V Operation
- LVC MOS or Clipped Sinewave Output Logic
- Sub-Miniature 5.0x3.2mm SMT Package
- Frequency Stabilities Available:
 - ±0.28ppm with STRATUM 3 Holdover,
 - ±0.50ppm or ±1.00ppm
- Temperature Ranges Available:
 - 0 to 70°C
 - 0 to 85°C
 - 20 to 70°C
 - 40 to 85°C
- Low Power <10mA
- Low Jitter <1pS RMS
- Tape and Reel Packaging
- RoHS Compliant / Lead Free RoHS
- Recommended for new designs

Applications

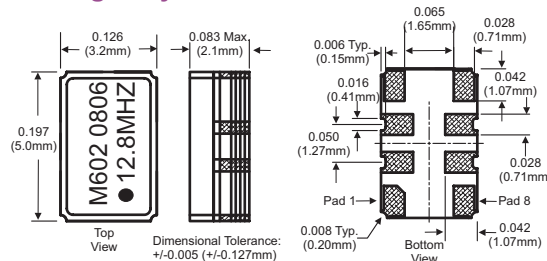
- STRATUM 3 Applications
- GPS Receivers
- Instrumentation
- Femtocells
- FTTH, FTTC

Ordering Information

M602 - 012.8M



Package Layout



Pad Connections

Pad	Connection
1	Voltage Control or N/C
2	Do not connect
3	Do not connect
4	Ground
5	Output
6	Do not connect
7	Do not connect
8	Supply, Vcc

Ordering Information

M	6	0	2	-	012.8M
Type: Precision TCXO VCTCXO 3.2x5mm	Temperature Range: 3 = 0 to 85° C 5 = 0 to 70° C 6 = -40 to 85° C 7 = -20 to 70° C	Frequency Stability: 0 = ± 0.28 ppm* 1 = ± 0.50 ppm* 2 = ± 1.00 ppm	Features: 2 = TCXO, LVC MOS, 3.3Vdc. 3 = TCXO, Clipped Sinewave, 3.3Vdc. 4 = VCTCXO, LVC MOS, 3.3Vdc. 5 = VCTCXO, Clipped Sinewave, 3.3Vdc.		Output Frequency: Frequency Format -xxx.xM Min.* -xxx.xxxxxM Max.* *Amount of numbers after the decimal point. M = MHz

* Models M602, M604, M612 and M614 are available with the frequency range limited to 6.4 MHz to 26 MHz

Example:
M602-012.8M = 3.2x5mm, TCXO, LVC MOS, 3.3Vdc, -40 to 85C, +/-0.28ppm, Output Frequency 12.8MHz

To order an M602 with an output frequency of:
6.4 MHz = M602-006.4M
20 MHz = M602-020.0M

Consult the factory for available frequencies.



Bulletin	Tx214
Page	1 of 4
Revision	04
Date	20 June 2011

Model Specifications

Model Number	M502	M503	M504	M505	Notes
Output Type	LVC MOS	Clipped Sinewave	LVC MOS	Clipped Sinewave	
TCXO / VCTCXO	TCXO	TCXO	VCTCXO	VCTCXO	
Frequency Range	6.4 to 40 MHz				
Frequency Stability	±0.28ppm				1
Supply Voltage	3.3Vdc				
Temperature Range	0 to 70°C				
Holdover Stability	±0.32ppm				2

Model Number	M702	M703	M704	M705	Notes
Output Type	LVC MOS	Clipped Sinewave	LVC MOS	Clipped Sinewave	
TCXO / VCTCXO	TCXO	TCXO	VCTCXO	VCTCXO	
Frequency Range	6.4 to 40 MHz				
Frequency Stability	±0.28ppm				1
Supply Voltage	3.3Vdc				
Temperature Range	-20 to 70°C				
Holdover Stability	±0.32ppm				2

Model Number	M302	M303	M304	M305	Notes
Output Type	LVC MOS	Clipped Sinewave	LVC MOS	Clipped Sinewave	
TCXO / VCTCXO	TCXO	TCXO	VCTCXO	VCTCXO	
Frequency Range	6.4 to 40 MHz				
Frequency Stability	±0.28ppm				1
Supply Voltage	3.3Vdc				
Temperature Range	0 to 85°C				
Holdover Stability	±0.32ppm				2

Model Number	M602	M603	M604	M605	Notes
Output Type	LVC MOS	Clipped Sinewave	LVC MOS	Clipped Sinewave	
TCXO / VCTCXO	TCXO	TCXO	VCTCXO	VCTCXO	
Frequency Range	6.4 to 26 MHz	6.4 to 40 MHz	6.4 to 26 MHz	6.4 to 40 MHz	
Frequency Stability	±0.28ppm				1
Supply Voltage	3.3Vdc				
Temperature Range	-40 to 85°C				
Holdover Stability	±0.32ppm				2

Model Number	M512	M513	M514	M515	Notes
Output Type	LVC MOS	Clipped Sinewave	LVC MOS	Clipped Sinewave	
TCXO / VCTCXO	TCXO	TCXO	VCTCXO	VCTCXO	
Frequency Range	6.4 to 40 MHz				
Frequency Stability	±0.50ppm				1
Supply Voltage	3.3Vdc				
Temperature Range	0 to 70°C				

Model Number	M712	M713	M714	M715	Notes
Output Type	LVC MOS	Clipped Sinewave	LVC MOS	Clipped Sinewave	
TCXO / VCTCXO	TCXO	TCXO	VCTCXO	VCTCXO	
Frequency Range	6.4 to 40 MHz				
Frequency Stability	±0.50ppm				1
Supply Voltage	3.3Vdc				
Temperature Range	-20 to 70°C				

Model Number	M312	M313	M314	M315	Notes
Output Type	LVC MOS	Clipped Sinewave	LVC MOS	Clipped Sinewave	
TCXO / VCTCXO	TCXO	TCXO	VCTCXO	VCTCXO	
Frequency Range	6.4 to 40 MHz				
Frequency Stability	±0.50ppm				1
Supply Voltage	3.3Vdc				
Temperature Range	0 to 85°C				

Model Number	M612	M613	M614	M615	Notes
Output Type	LVC MOS	Clipped Sinewave	LVC MOS	Clipped Sinewave	
TCXO / VCTCXO	TCXO	TCXO	VCTCXO	VCTCXO	
Frequency Range	6.4 to 26 MHz	6.4 to 40 MHz	6.4 to 26 MHz	6.4 to 40 MHz	
Frequency Stability	±0.50ppm				1
Supply Voltage	3.3Vdc				
Temperature Range	-40 to 85°C				

Model Number	M522	M523	M524	M525	Notes
Output Type	LVC MOS	Clipped Sinewave	LVC MOS	Clipped Sinewave	
TCXO / VCTCXO	TCXO	TCXO	VCTCXO	VCTCXO	
Frequency Range	6.4 to 52 MHz				
Frequency Stability	±1.00ppm				1
Supply Voltage	3.3Vdc				
Temperature Range	0 to 70°C				

Model Number	M722	M723	M724	M725	Notes
Output Type	LVC MOS	Clipped Sinewave	LVC MOS	Clipped Sinewave	
TCXO / VCTCXO	TCXO	TCXO	VCTCXO	VCTCXO	
Frequency Range	6.4 to 52 MHz				
Frequency Stability	±1.00ppm				1
Supply Voltage	3.3Vdc				
Temperature Range	-20 to 70°C				

Model Number	M322	M323	M324	M325	Notes
Output Type	LVC MOS	Clipped Sinewave	LVC MOS	Clipped Sinewave	
TCXO / VCTCXO	TCXO	TCXO	VCTCXO	VCTCXO	
Frequency Range	6.4 to 52 MHz				
Frequency Stability	±1.00ppm				1
Supply Voltage	3.3Vdc				
Temperature Range	-40 to 85°C				

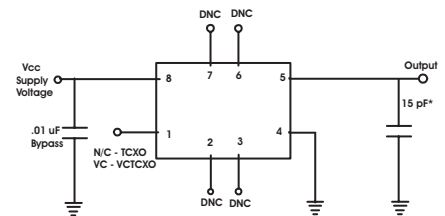
Model Number	M622	M623	M624	M625	Notes
Output Type	LVC MOS	Clipped Sinewave	LVC MOS	Clipped Sinewave	
TCXO / VCTCXO	TCXO	TCXO	VCTCXO	VCTCXO	
Frequency Range	6.4 to 52 MHz				
Frequency Stability	±1.00ppm				1
Supply Voltage	3.3Vdc				
Temperature Range	-40 to 85°C				



Features

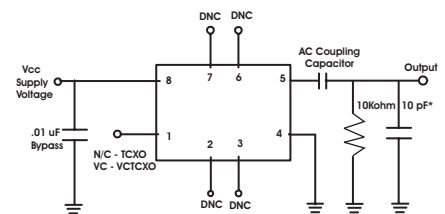
- 3.3V Operation
- LVC MOS or Clipped Sinewave Output Logic
- Sub-Miniature 3.2x5.0mm SMT Package
- Frequency Stabilities Available:
 - ±0.28ppm with STRATUM 3 Holdover,
 - ±0.50ppm or ±1.00ppm
- Temperature Ranges Available:
 - 0 to 70°C
 - 20 to 70°C
 - 0 to 85°C
 - 40 to 85°C
- Low Power <10mA
- Low Jitter <1pS RMS
- Tape and Reel Packaging
- RoHS Compliant / Lead Free
- Recommended for new designs

LVC MOS Test Circuit



DNC = Do Not Connect
* NPO Grade Component

Clipped Sinewave Test Circuit



DNC = Do Not Connect
* NPO Grade Component

US Headquarters:
630-851-4722
European Headquarters:
+353-61-472221

Bulletin	Tx214
Page	2 of 4
Revision	04
Date	20 June 2010

Notes:

- 1) Frequency stability vs. change in temperature. [$\pm(F_{max} - F_{min})/2.F_0$].
- 2) Inclusive of frequency stability, supply voltage change ($\pm 1\%$), aging, for 24 hours.

Electrical Specifications for all Models

ABSOLUTE MAXIMUM RATINGS

PARAMETER	UNITS	MINIMUM	NOMINAL	MAXIMUM	UNITS	NOTE
Storage Temperature		-55	-	85	°C	
Supply Voltage	(Vcc)	-0.5	-	6.0	Vdc	
Input Voltage	(Vc)	-0.5	-	Vcc+0.5	Vdc	

Operating Specifications

Parameter	Minimum	Nominal	Maximum	Units	Notes	
TCXO Frequency Calibration @ 25°C	-1.00	-	1.00	ppm	1	
Supply Voltage Variation (Vcc±5%)	-0.2	-	0.2	ppm		
Load Coefficient, ±5%	-0.2	-	0.2	ppm		
Static Temperature Hysteresis	-0.4	-	0.4	ppm	2	
Aging First Year	-1.00	-	1.00	ppm		
Total Frequency Tolerance (20 Years)	-4.60	-	4.60	ppm	3	
Supply Voltage	(Vcc)	3.135	3.3	3.465	Vdc	4
Supply Current	(Icc)	-	6	10	mA	
Period Jitter	-	3	5	ps rms		
Integrated Phase Jitter (BW= 12kHz to 20MHz)	-	0.3	1.0	ps rms		
SSB Phase Noise at 10Hz offset	-	-80	-70	dBc/Hz		
SSB Phase Noise at 100Hz offset	-	-110	-100	dBc/Hz		
SSB Phase Noise at 1KHz offset	-	-135	-130	dBc/Hz		
SSB Phase Noise at >10KHz offset	-	-150	-145	dBc/Hz		
SSB Phase Noise at >100KHz offset	-	-150	-150	dBc/Hz		
Start Up Time	-	-	10	ms		

Input Characteristics For Voltage Control (Pad 1)

Parameter	Minimum	Nominal	Maximum	Units	Notes	
Control Voltage Range (Vcc = 3.3V)	(Vc)	0.3	1.65	3.0	Vdc	
Frequency Tuning measured @ 25°C		±10	-	-	ppm	5
Linearity		±5	-	-	%	
Slope		Positive				

LVC MOS Output Characteristics

Parameter	Minimum	Nominal	Maximum	Units	Notes
LOAD	-	15	-	pF	6
Voltage (High)	(Voh)	90%Vcc	-	-	Vdc
(Low)	(Vol)	-	10%Vcc	-	Vdc
Current (High)	(Ioh)	-	-4	mA	
(Low)	(Iol)	4	-	mA	
Duty Cycle at 50% of Vcc		45	50	55	%
Rise / Fall Time 10% to 90%		-	-	8	ns

Clipped Sinewave Output Characteristics

Parameter	Minimum	Nominal	Maximum	Units	Notes
Load	-	-	-	-	7
Output Load Resistance	-	10K	-	Ohms	6
Output Load Capacitance	-	10	-	pF	6
Output Voltage	1.00	-	-	V pk-pk	

Notes

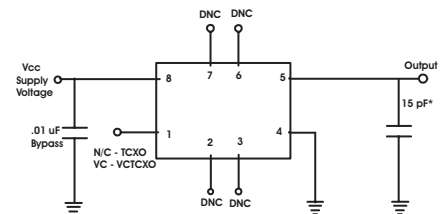
- TCXO: Initial calibration @ 25°C. Specifications at time of shipment after 48 hours of operation.
- Frequency change after reciprocal temperature ramped over the operating range. Frequency measured before and after at 25°C.
- Inclusive of calibration @ 25°C, frequency vs. change in temperature, change in supply voltage (±5%), load change (±5%), reflow soldering process and 20 years aging.
- For best in application performance, careful selection of an external power source is critical. Select an external regulator that meets or exceeds to following specifications regarding voltage regulation tolerance, initial accuracy, temperature coefficient, voltage noise, and low voltage noise density. **Factory Test Conditions:** Initial Accuracy ±2mV, Noise (0.1Hz to 10 KHz) 15uV p-p, Voltage Noise Density = 50nV/(Square root Hz), Temperature Coefficient < 5ppm°C.
- Additional pull ranges are available; please contact the factory for additional information.
- Attention: To achieve optimal frequency stability, and in some cases to meet the specification stated on this data sheet, it is required that the circuit connected to this TCXO output must have the equivalent input capacitance that is specified by the nominal load capacitance. Deviations from the nominal load capacitance will have a graduated effect on the stability of approximately 20 ppb per pF load difference.
- Output is DC coupled.



Features

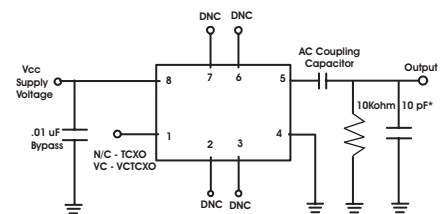
- 3.3V Operation
- LVC MOS or Clipped Sinewave Output Logic
- Sub-Miniature 3.2x5.0mm SMT Package
- Frequency Stabilities Available:
 - ±0.28ppm with STRATUM 3 Holdover,
 - ±0.50ppm or ±1.00ppm
- Temperature Ranges Available:
 - 0 to 70°C
 - 20 to 70°C
 - 0 to 85°C
 - 40 to 85°C
- Low Power <10mA
- Low Jitter <1pS RMS
- Tape and Reel Packaging
- RoHS Compliant / Lead Free

LVC MOS Test Circuit



DNC = Do Not Connect
* NPO Grade Component

Clipped Sinewave Test Circuit



DNC = Do Not Connect
* NPO Grade Component

US Headquarters:

630-851-4722

European Headquarters:

+353-61-472221

Bulletin Tx214

Page 3 of 4

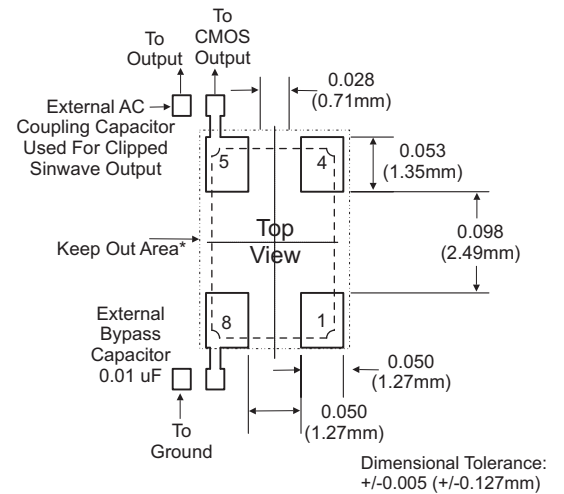
Revision 04

Date 20 June 2011

Environmental Characteristics

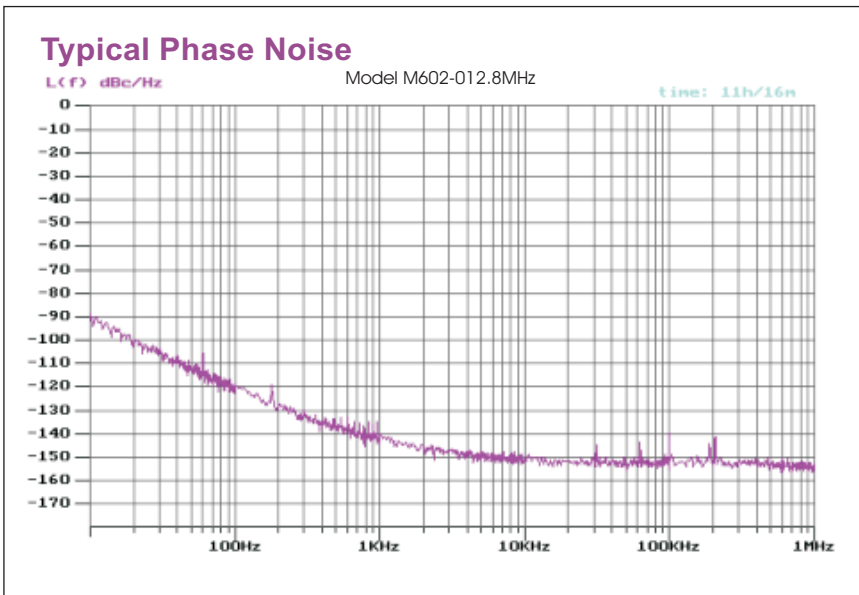
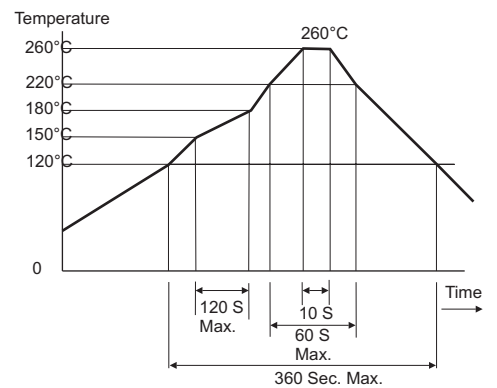
Vibration:	Vibration per Mil Std 883E Method 2007.3 Test Condition A
Shock:	Mechanical Shock per Mil Std 883E Method 2002.4 Test Condition B.
Soldering:	SMD product suitable for Convection Reflow soldering. Peak temperature 260°C. Maximum time above 220°C, 60 seconds.
Solderability:	Solderability per Mil Std 883E Method 2003

Suggested Pad Layout

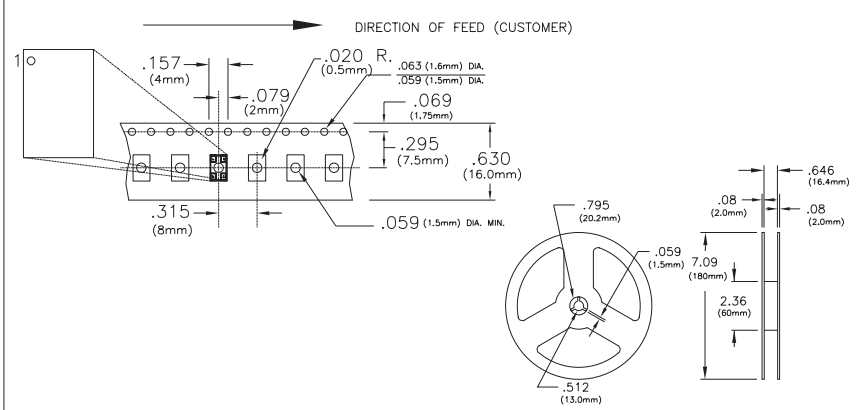


* Do not route any traces in the keep out area. It is recommended the next layer under the keep out area is to be ground plane.

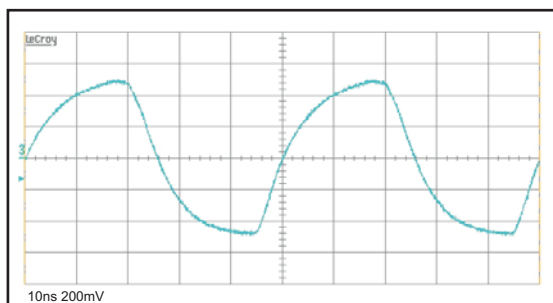
Solder Profile



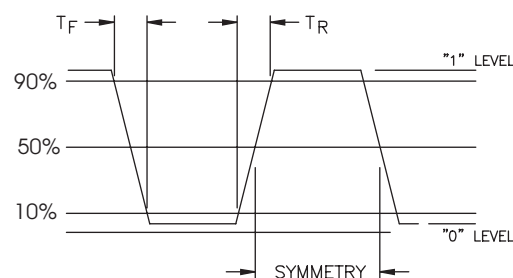
Tape and Reel Specifications



Clipped Sinewave Output Waveform



LVC MOS Output Waveform



US Headquarters:
630-851-4722
European Headquarters:
+353-61-472221

Bulletin	Tx214
Page	4 of 4
Revision	04
Date	20 June 2011