

MICRO

MS147
MG147
MO147

0.4" LED SINGLE
DIGIT DISPLAY

T-41-33

SEVEN SEGMENT DISPLAYS

- High Efficiency GaP/GaAsP
- 0.4 Inch Character Height
- High Contrast
- Continuous Uniform Segments
- Wide Viewing Angle

● AVAILABLE IN 3 COLORS :

MS147	RED
MG147	GREEN
MO147	ORANGE

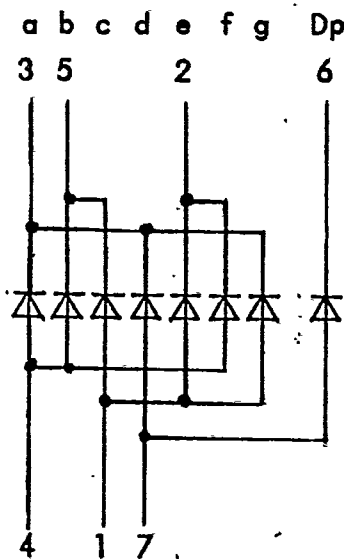
MAXIMUM RATINGS (Ta=25°C)

- Reverse Voltage
- Peak Forward Current / Segment
- Continuous Forward Current / Segment
- Storage Temperature Range
- Operating Temperature Range

VR	5V
IF/Pulse*	200mA
IF/DC	20mA
Tstg	-25 to +80°C
Topr	-20 to +75°C

* Note : Pulse Width = 1mS, Duty Ratio = 1/10.

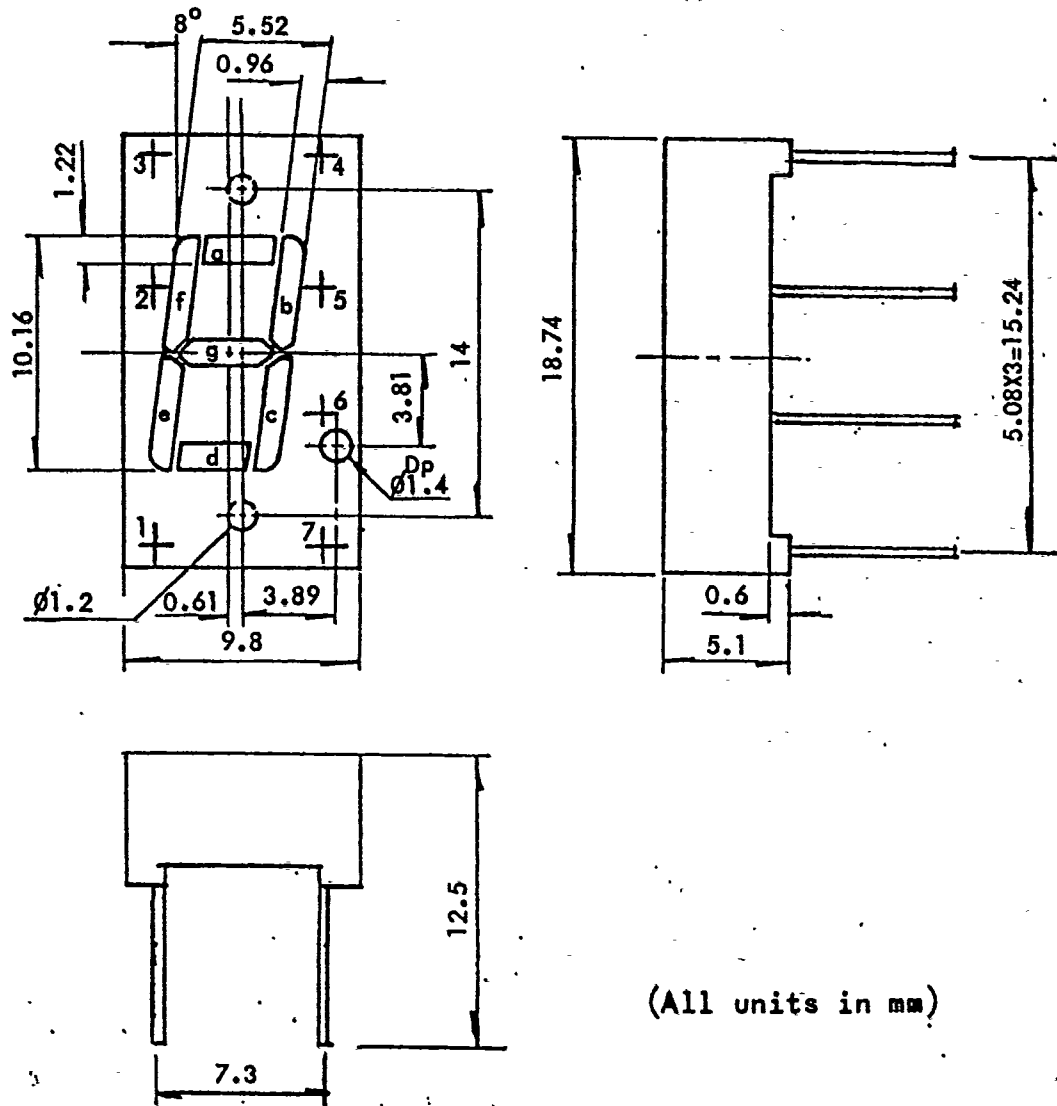
INTERNAL CONNECTION



MICRO ELECTRONICS LTD.

38, HUNG TO ROAD, KWUN TONG, HONG KONG. TELEX: 43510
KWUN TONG P. O. BOX 69477 CABLE ADDRESS "MICROTRON"
TEL. 3-430181-5 FAX. NO. 3-410321

MECHANICAL OUTLINE



(All units in mm)

ELECTRO-OPTICAL CHARACTERISTICS PER SEGMENT (T_a=25°C)

PARAMETER	SYMBOL	MS147	MG147	MO147	UNIT	CONDITIONS
Forward Voltage (TYP)	V _F	2.2	2.2	2.2	V	I _F =20mA
Luminous Intensity (TYP)	I _V	600	600	1000	μcd	I _F =20mA
Segment to Segment Luminous Intensity Ratio		1.5:1	1.5:1	1.5:1		I _F =10mA
Wave Length At Peak Emission	λ _P	700	565	630	nm	
Spectral Half Width	Δλ	100	30	30	nm	