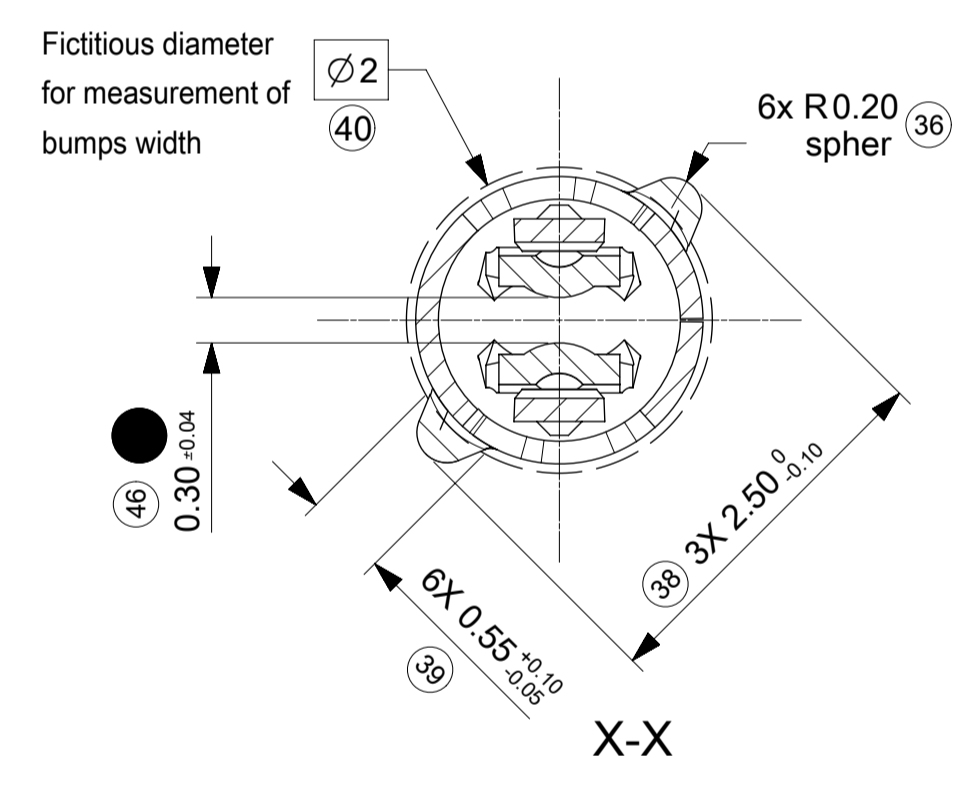
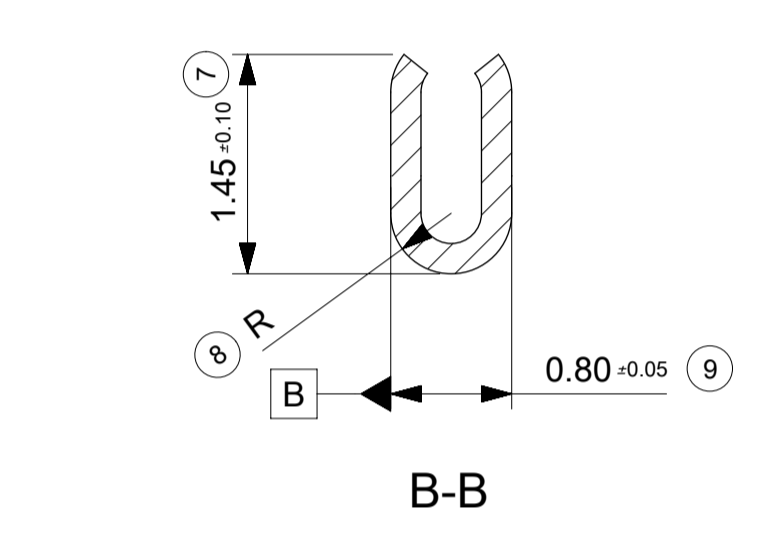
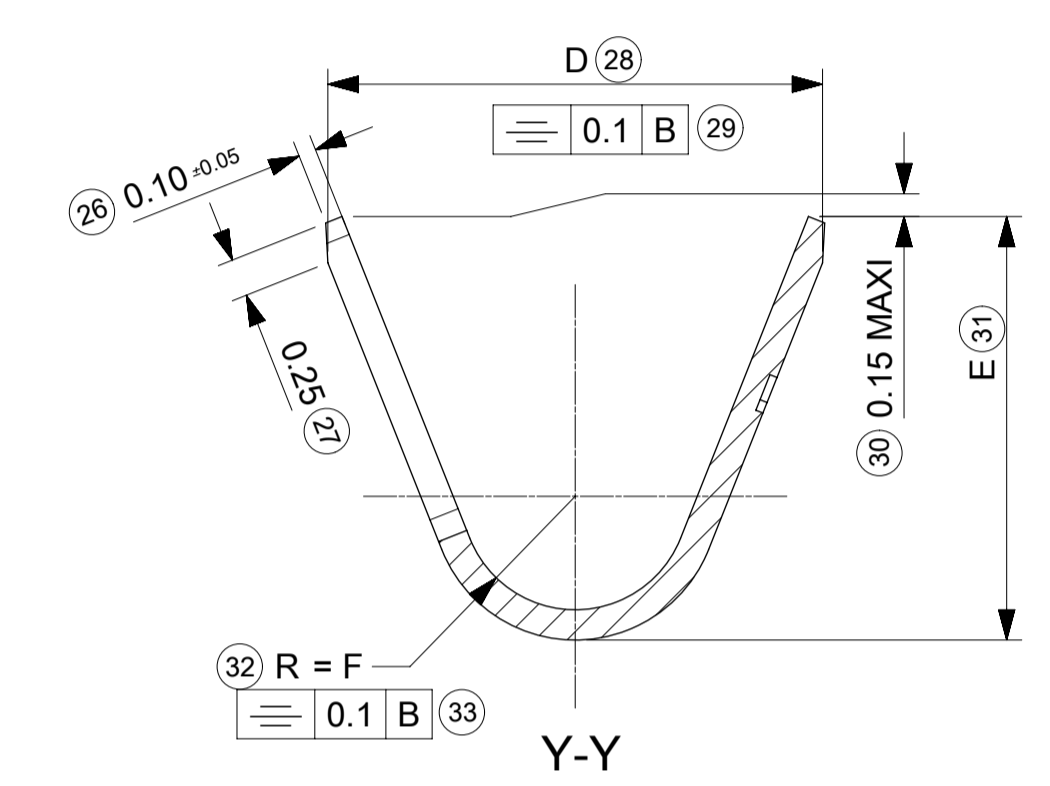
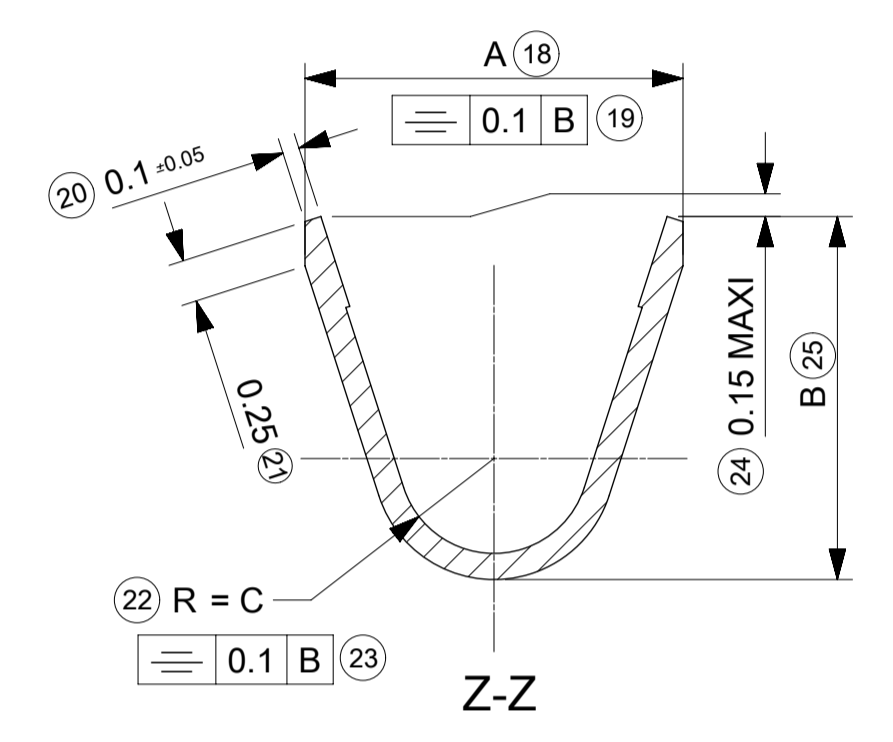


IDENTIFICATION MARKING  
SEE NOTE 1



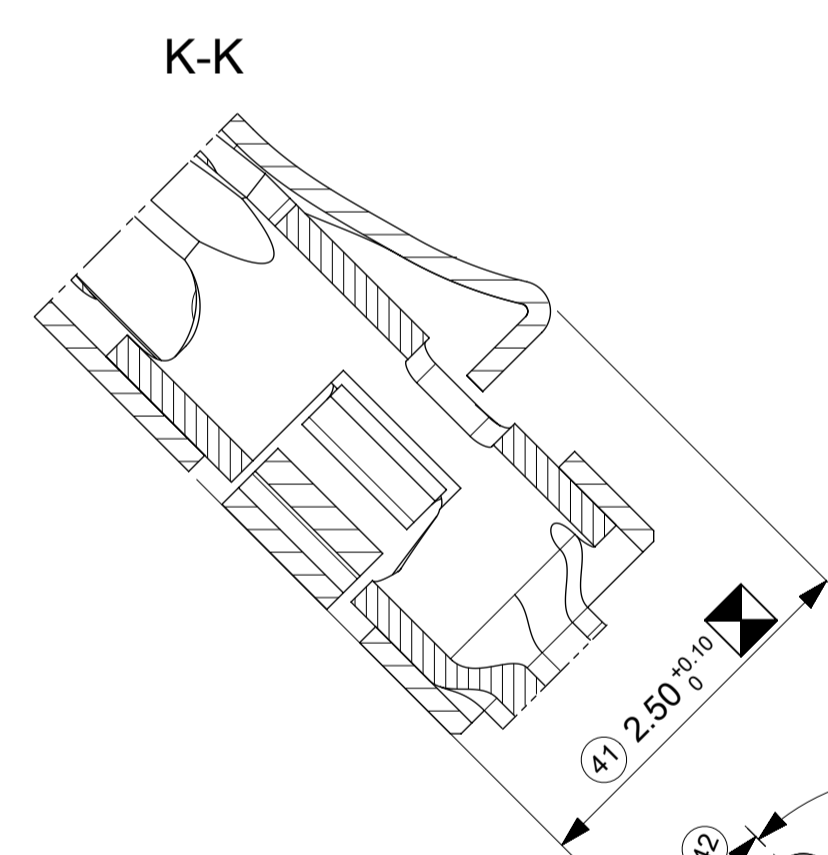
NOTE :  
- MARKING "A" is used to identify "STANDARD" terminal  
- CRIMPING SPECIFICATION ACCORDING TO AS-64322-001

2	BOX TERMINAL	STAINLESS STEEL thickness=0.15 mm
1	BODY TERMINAL	high conductivity copper alloy thickness=0.2 mm
MARK	DESIGNATION	MATERIAL

PART NUMBER	CONTACT AREA	CRIMPING AREA	UNDERLAYER	CRIMPING RANGE (mm <sup>2</sup> )	A±0.2	B±0.2	rC <sup>+0.15</sup> <sub>-0.1</sub>	D±0.2	E±0.2	rF±0.1	WEIGHT (g)
0643221029	Sn	Sn		0.75	2.5	2.4	0.6	3.3	2.8	0.75	0.119
0643221219	Au 1.27μ MINI	Sn	Ni	0.50	2.3	2.2	0.6	3.1	2.6	0.75	0.117
0643221039	Sn	Sn		0.50	2.3	2.2	0.6	3.1	2.6	0.75	0.117
0643221239	Au 1.27μ MINI	Sn	Ni	0.22 to 0.44	2.0	1.7	0.6	3.1	2.6	0.75	0.112
0643221019	Sn	Sn		0.22 to 0.44	2.0	1.7	0.6	3.1	2.6	0.75	0.112
0643221229	Au 1.27μ MINI	Sn	Ni	0.22 to 0.44	2.0	1.7	0.6	3.1	2.6	0.75	0.112

DELIMITED GOLD PLATED AREA

A-A



(SKC)	COTES CARACTERISTIQUES SPECIALES	SPECIAL KEY CHARACTERISTICS
⊠	INDICATION DIMENSIONS S.P.C	DENOTES S.P.C DIMENSIONS
⊙	INDICATION DIMENSIONS CRITIQUES	DENOTES CRITICAL DIMENSIONS
●	INDICATION DIMENSIONS FONCTIONNELLES	DENOTES FUNCTIONAL DIMENSIONS
QUANTITE PAR FEUILLE INDIVIDUELLE QUANTITY PER INDIVIDUAL SHEET		
⊠ 1	⊙ 0	● 4 (SKC) 0

THIS DRAWING CONTAINS INFORMATION THAT IS PROPRIETARY TO MOLEX ELECTRONIC TECHNOLOGIES, LLC AND SHOULD NOT BE USED WITHOUT WRITTEN PERMISSION

DIMENSION UNITS	SCALE	CURRENT REV DESC: NX RE-MASTERING	
mm	20:1		
GENERAL TOLERANCES (UNLESS SPECIFIED)			
ANGULAR TOL	± 2.0°	EC NO: 114689	
4 PLACES	± 0.1	DRWN: SSUVARNA	2017/07/05
3 PLACES	± 0.1	CHK'D: SLAFAURE	2018/06/04
2 PLACES	± 0.1	APPR: SLAFAURE	2018/06/14
1 PLACE	± 0.1	INITIAL REVISION:	
0 PLACES	± 0.1	DRWN: FPAROLARI	2007/09/17
DRAFT WHERE APPLICABLE MUST REMAIN WITHIN DIMENSIONS		APPR: LSTICKEIR	2007/09/17
FIRST ANGLE PROJECTION	DRAWING	SERIES	MATERIAL NUMBER
	A1-SIZE	64322	SEE CHART
CUSTOMER		SHEET NUMBER	
GENERAL MARKET		1 OF 1	

**molex**

CP RCPT TRM 0.6

PRODUCT CUSTOMER DRAWING

DOCUMENT NUMBER	DOC TYPE	DOC PART	REVISION
SD-64322-001	PSD	000	E1