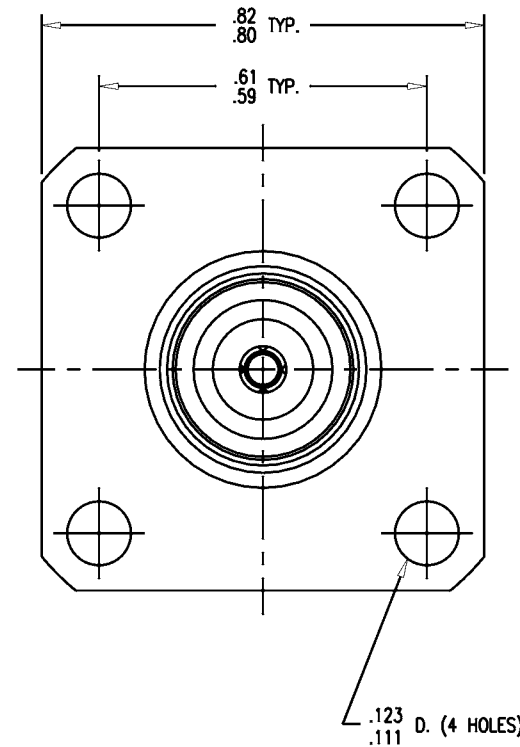
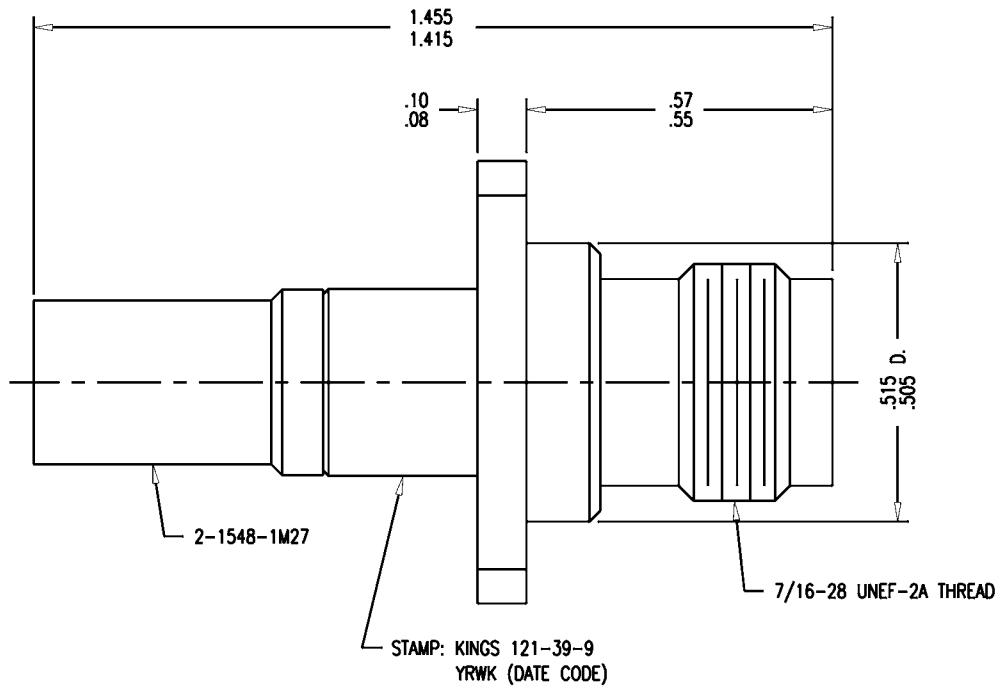


SD

## REVISIONS

ISSUE	CHANGES
0	ER 34025 KH 07/28/92
1	CN 37513 C KH 12/24/97

121-39-9



## NOTES:

- FOR USE WITH BOEING S280W503-3 & ADAMS RUSSELL FC20Z CABLES.
- FOR CABLING INSTRUCTIONS SEE 3-546-1.
- FOR CRIMPING USE DIE KTH-2216.
- INTERFACE PER MIL-STD-348, FIG. 313-2.
- FOR USE WITH .140 MAX. PANEL.
- CENTER CONTACT (1-507-40MA9) SUPPLIED UNASSEMBLED.
- MARK PACKAGE: KINGS 121-39-9  
YRWK (DATE CODE)
- MATERIALS:  
INSULATOR: TEFLON, ASTM-D-1457  
K-GRIP SLEEVE: COM. BRONZE TUBE, ALLOY 220  
CENTER CONTACT: BER. COPPER, ASTM-B-196  
ALL OTHER METAL PARTS: BRASS, ASTM-B16
- FINISHES:  
CENTER CONTACT: GOLD PLATE, PER MIL-G-45204  
ALL OTHER METAL PARTS: KINGS TARNISH RESISTANT FINISH (TR-5)
- ELECTRICAL CHARACTERISTICS:  
NOMINAL IMPEDANCE: 50 OHMS  
WORKING VOLTAGE: 500 VRMS  
FREQUENCY RANGE: DC TO 11 GHz

KAW2019

SCALE 4:1

APPROX SURFACE AREA

WAS: E-17490

USED ON

REF: BOEING

JACK, PANEL, TNC

DRAWN KH DATE 06/01/92

DESIGN JT DATE 06/02/92

APPR. DATE

**KINGS**  
ELECTRONICS CO., INC.  
TUCKAHOE, NEW YORK 10707

SD

121-39-9