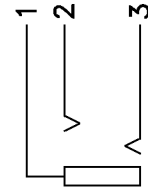
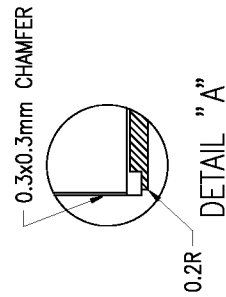
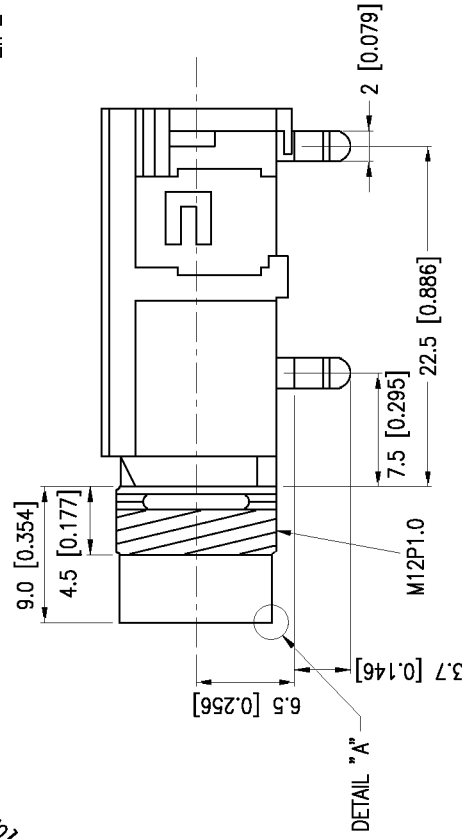
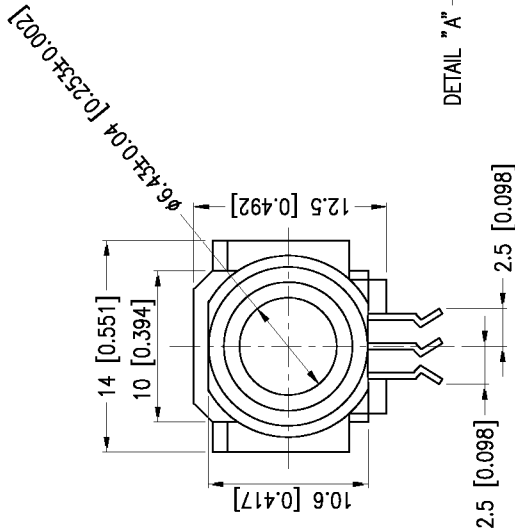


HOLE LAYOUT  
(BOTTOM VIEW)



**SPECIFICATIONS:**

RATING: 12V DC @ 1A

WITHSTAND VOLTAGE:

500V AC FOR 1 MINUTE

INSERTION FORCE:

BEFORE TEST OR INITIAL: 0.5KG TO 3KG

AFTER LIFE TEST: 0.3KG TO 3KG

EXTRACTION FORCE:

BEFORE TEST OR INITIAL: 0.5KG TO 3KG

AFTER LIFE TEST: 0.3KG TO 3KG

INSULATION RESISTANCE:

100 MEGA-OHMS MIN. @ 500V DC

CONTACT RESISTANCE: 100mA AND @ FREQ. OF 1KHZ

BEFORE TEST OR INITIAL: 30 MILLI-OHMS MAX

AFTER LIFE TEST: 60 MILLI-OHMS MAX AT BELOW

100mA AND @ FREQ. OF 1KHZ

LIFE TEST:

5,000 CYCLES OF INSERTION AND EXTRACTION

@ 20 TO 30 CYCLES PER MINUTE UNDER NO LOAD



9615 SW Allen, Suite 103  
Beaverton, OR 97006  
Phone: (503) 643-4899  
800-275-4899  
Fax: (503) 643-6129  
Website: www.cuistack.com

TITLE:

6.4mm AUDIO JACK-STEREO

PART NO.

SJ-6323G

UNITS:

MM [INCHES]

DRAWN BY:

APPROVED BY:

SCALE:  
2X