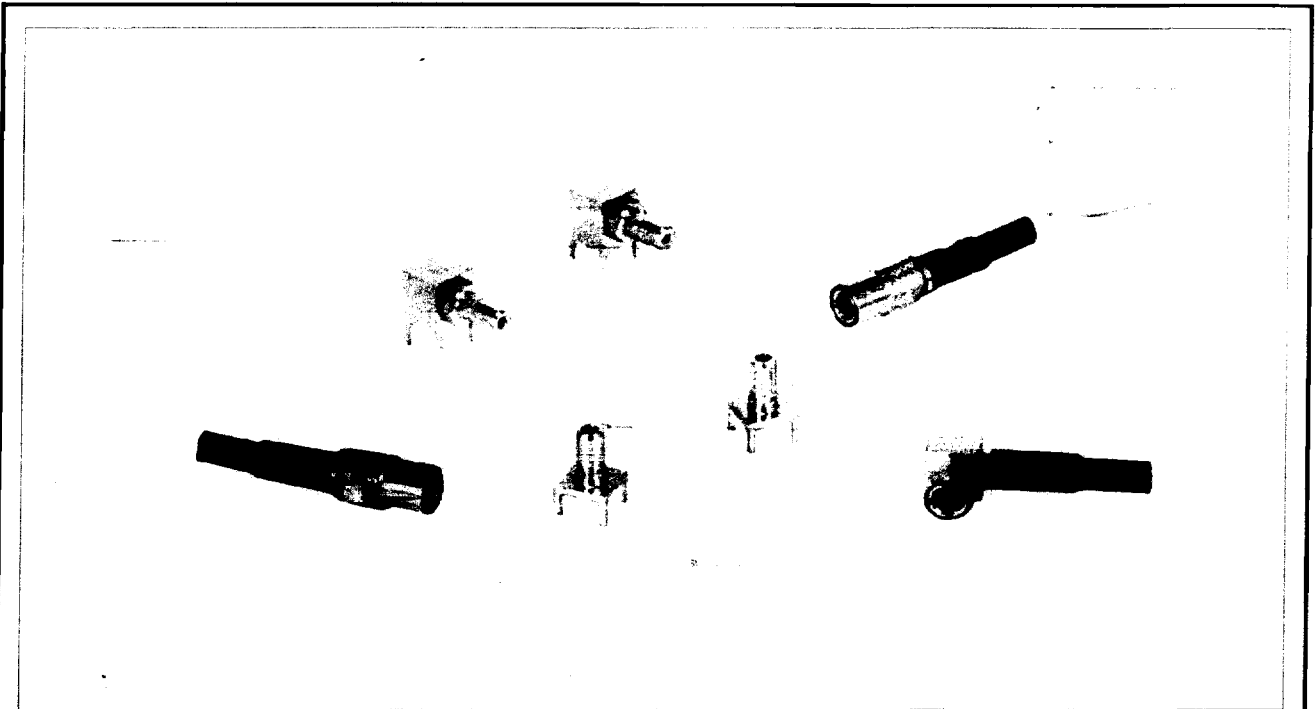


# SSMB Series



**Low-Profile, Push-on Coaxial Connectors  
Conforming to IEC-Pub. 169-19**



## ■ FEATURES

- SSMB series are super mini-size low profile, push-on type coaxial cable connectors produced corresponding to minimization of communication equipment, and based on IEC-Pub. 169-19 Standard.
- When fitted, the height from print base is less than 6mm (in combination of SP and LC) or less than 10mm (in combination of LP and SR).

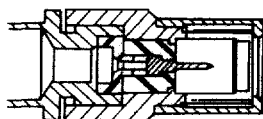
## ■ SPECIFICATION

Impedance.....50Ω  
 Dielectric withstanding ...AC500V(r.m.s.)  
   voltage 1 minute  
 Insulation resistance .....1000MΩ min.  
   at 250V DC  
 Contact resistance .....7.5mΩ max.  
   at 1A DC  
 VSWR.....1.2max. 1GHz

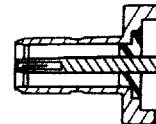
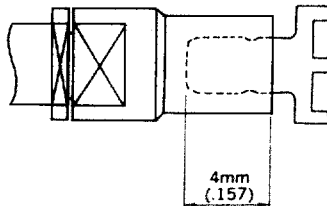
## ■ MATERIAL/FINISH

Shell(Body) .....Brass/Gold or Nickel plate  
 Contact(male) .....Beryllium copper/Gold plate  
 Contact(female) ...Phosphor bronze/Gold plate  
 Insulators .....Teflon

## ■ Mating Dimension



Plug Mating Face



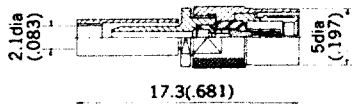
Jack Mating Face

# SSMB Series



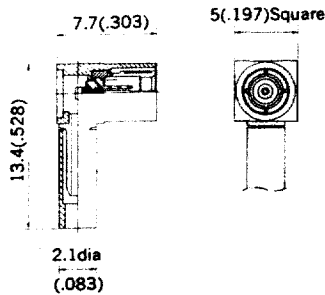
## ■ Straight plugs

Finish: Shell(Body)/Contact, Unit: mm(inch)



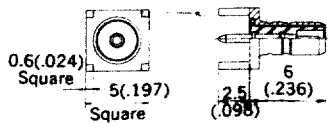
Name	Part no.	Applicable Cable	Finish	Hand crimp tool P/N
SSMB-SP-196U	92619	RG-196A/U	Ni/Au	CR-H-1164
SSMB-SP-1.5QEWS	92621	1.5D-QEW	Ni/Au	CR-H-1133

## ■ Angle plugs

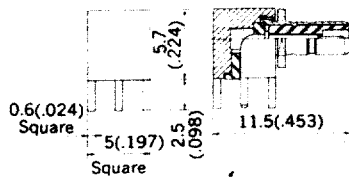


Name	Part no.	Applicable Cable	Finish	Hand crimp tool P/N
SSMB-LP-196U	92620	RG-196A/U	Ni/Au	CR-H-1164
SSMB-LP-1.5QEWS	92622	1.5D-QEW	Ni/Au	CR-H-1133

## ■ Receptacles



Name	Part no.	Finish
SSMB-SR-PC	92617	Au/Au



Name	Part no.	Finish
SSMB-LR-PC	92618	Au/Au

### • Mounting hole

