

---

# HB56UW1673EJN-5/6, HB56UW1665EJN-5/6

128MB Unbuffered EDO DRAM DIMM  
16-Mword  $\times$  72/64-bit, 4k Refresh, 1 Bank Module  
(18/16 pcs of 16M  $\times$  4 components)

## HITACHI

ADE-203-859A (Z)  
Rev. 1.0  
May 22, 1998

---

### Description

The HB56UW1673EJN, HB56UW1665EJN belong to 8-byte DIMM (Dual in-line Memory Module) family, and have been developed an optimized main memory solution for 4 and 8-byte processor applications. The HB56UW1673EJN is a 16 M  $\times$  72 Dynamic RAM Module, mounted 18 pieces of 64-Mbit DRAM (HM5165405) sealed in SOJ package and 1 piece of serial EEPROM for Presence Detect (PD). The HB56UW1665EJN is a 16 M  $\times$  64 Dynamic RAM Module, mounted 16 pieces of 64-Mbit DRAM (HM5165405) sealed in SOJ package and 1 piece of serial EEPROM for Presence Detect (PD). The HB56UW1673EJN, HB56UW1665EJN offer Extended Data Out (EDO) Page Mode as a high speed access mode. An outline of the HB56UW1673EJN, HB56UW1665EJN Series are 168-pin socket type package (dual lead out). Therefore, the HB56UW1673EJN, HB56UW1665EJN make high density mounting possible without surface mount technology. The HB56UW1673EJN, HB56UW1665EJN provide common data inputs and outputs. Decoupling capacitors are mounted beside each SOJ on the its module board.

### Features

- 168-pin socket type package (Dual lead out)
  - Outline: 133.35 mm (Length)  $\times$  25.40 mm (Height)  $\times$  9.00 mm (Thickness)
  - Lead pitch : 1.27 mm
- Single 3.3 V supply: 3.3 V  $\pm$  0.3 V
- High speed
  - Access time:  $t_{RAC} = 50$  ns/60 ns (max)
  - Access time:  $t_{CAC} = 13$  ns/15 ns (max)

---

## HB56UW1673EJN-5/6, HB56UW1665EJN-5/6

---

- Low power dissipation
  - Active mode: 8.42 W/7.13 W (max) (HB56UW1673EJN Series)
  - Active mode: 7.49 W/6.34 W (max) (HB56UW1665EJN Series)
  - Standby mode (TTL): 129.6 mW (max) (HB56UW1673EJN Series)
  - Standby mode (TTL): 115.2 mW (max) (HB56UW1665EJN Series)
  - Standby mode (CMOS): 32.4 mW (max) (HB56UW1673EJN Series)
  - Standby mode (CMOS): 28.8 mW (max) (HB56UW1665EJN Series)
- JEDEC standard outline unbuffered 8-byte DIMM
- EDO page mode capability
- 4096 refresh cycles: 64 ms
- 3 variations of refresh
  - $\overline{\text{RAS}}$ -only refresh
  - $\overline{\text{CAS}}$ -before- $\overline{\text{RAS}}$  refresh
  - Hidden refresh

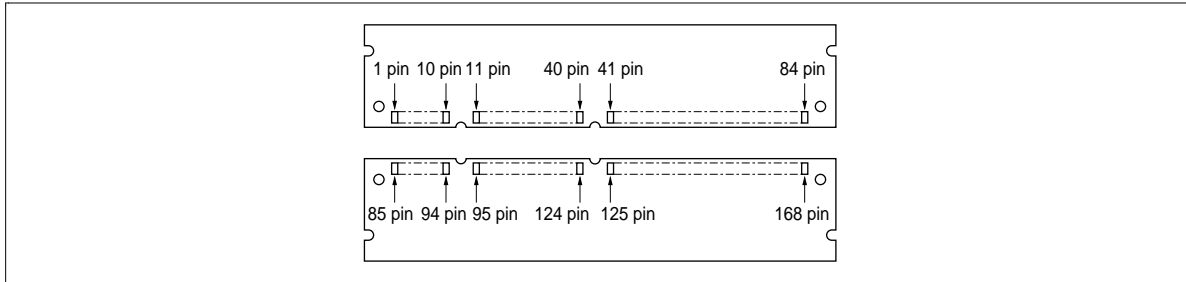
### Ordering Information

Type No.	Access time	Package	Contact pad
HB56UW1673EJN-5	50 ns	168-pin dual lead out socket type	Gold
HB56UW1673EJN-6	60 ns		
HB56UW1665EJN-5	50 ns		
HB56UW1665EJN-6	60 ns		

---

## HB56UW1673EJN-5/6, HB56UW1665EJN-5/6

### Pin Arrangement



Pin No.	Signal name	Pin No.	Signal name	Pin No.	Signal name	Pin No.	Signal name
1	V <sub>SS</sub>	43	V <sub>SS</sub>	85	V <sub>SS</sub>	127	V <sub>SS</sub>
2	DQ0	44	$\overline{OE}2$	86	DQ32	128	NC
3	DQ1	45	$\overline{RAS}2$	87	DQ33	129	NC
4	DQ2	46	$\overline{CAS}2$	88	DQ34	130	$\overline{CAS}6$
5	DQ3	47	$\overline{CAS}3$	89	DQ35	131	$\overline{CAS}7$
6	V <sub>CC</sub>	48	$\overline{WE}2$	90	V <sub>CC</sub>	132	NC
7	DQ4	49	V <sub>CC</sub>	91	DQ36	133	V <sub>CC</sub>
8	DQ5	50	NC	92	DQ37	134	NC
9	DQ6	51	NC	93	DQ38	135	NC
10	DQ7	52	CB2 (NC) <sup>*3</sup>	94	DQ39	136	CB6 (NC) <sup>*7</sup>
11	DQ8	53	CB3 (NC) <sup>*4</sup>	95	DQ40	137	CB7 (NC) <sup>*8</sup>
12	V <sub>SS</sub>	54	V <sub>SS</sub>	96	V <sub>SS</sub>	138	V <sub>SS</sub>
13	DQ9	55	DQ16	97	DQ41	139	DQ48
14	DQ10	56	DQ17	98	DQ42	140	DQ49
15	DQ11	57	DQ18	99	DQ43	141	DQ50
16	DQ12	58	DQ19	100	DQ44	142	DQ51
17	DQ13	59	V <sub>CC</sub>	101	DQ45	143	V <sub>CC</sub>
18	V <sub>CC</sub>	60	DQ20	102	V <sub>CC</sub>	144	DQ52
19	DQ14	61	NC	103	DQ46	145	NC
20	DQ15	62	NC	104	DQ47	146	NC
21	CB0 (NC) <sup>*1</sup>	63	NC	105	CB4 (NC) <sup>*5</sup>	147	NC
22	CB1 (NC) <sup>*2</sup>	64	V <sub>SS</sub>	106	CB5 (NC) <sup>*6</sup>	148	V <sub>SS</sub>
23	V <sub>SS</sub>	65	DQ21	107	V <sub>SS</sub>	149	DQ53
24	NC	66	DQ22	108	NC	150	DQ54
25	NC	67	DQ23	109	NC	151	DQ55

## HB56UW1673EJN-5/6, HB56UW1665EJN-5/6

### Pin Arrangement (cont)

Pin No.	Signal name	Pin No.	Signal name	Pin No.	Signal name	Pin No.	Signal name
26	V <sub>CC</sub>	68	V <sub>SS</sub>	110	V <sub>CC</sub>	152	V <sub>SS</sub>
27	$\overline{WE}0$	69	DQ24	111	NC	153	DQ56
28	$\overline{CAS}0$	70	DQ25	112	$\overline{CAS}4$	154	DQ57
29	$\overline{CAS}1$	71	DQ26	113	$\overline{CAS}5$	155	DQ58
30	$\overline{RAS}0$	72	DQ27	114	NC	156	DQ59
31	$\overline{OE}0$	73	V <sub>CC</sub>	115	NC	157	V <sub>CC</sub>
32	V <sub>SS</sub>	74	DQ28	116	V <sub>SS</sub>	158	DQ60
33	A0	75	DQ29	117	A1	159	DQ61
34	A2	76	DQ30	118	A3	160	DQ62
35	A4	77	DQ31	119	A5	161	DQ63
36	A6	78	V <sub>SS</sub>	120	A7	162	V <sub>SS</sub>
37	A8	79	NC	121	A9	163	NC
38	A10	80	NC	122	A11	164	NC
39	NC	81	NC	123	NC	165	SA0
40	V <sub>CC</sub>	82	SDA	124	V <sub>CC</sub>	166	SA1
41	V <sub>CC</sub>	83	SCL	125	NC	167	SA2
42	NC	84	V <sub>CC</sub>	126	NC	168	V <sub>CC</sub>

- Notes:
1. CB0: HB56UW1673EJN, NC: HB56UW1665EJN
  2. CB1: HB56UW1673EJN, NC: HB56UW1665EJN
  3. CB2: HB56UW1673EJN, NC: HB56UW1665EJN
  4. CB3: HB56UW1673EJN, NC: HB56UW1665EJN
  5. CB4: HB56UW1673EJN, NC: HB56UW1665EJN
  6. CB5: HB56UW1673EJN, NC: HB56UW1665EJN
  7. CB6: HB56UW1673EJN, NC: HB56UW1665EJN
  8. CB7: HB56UW1673EJN, NC: HB56UW1665EJN

---

**HB56UW1673EJN-5/6, HB56UW1665EJN-5/6**

---

**Pin Description**

<b>Pin name</b>	<b>Function</b>
A0 to A11	Address input Row address A0 to A11 Column address A0 to A11 Refresh address A0 to A11
DQ0 to DQ63	Data input/output
$\overline{\text{RAS0}}$ , $\overline{\text{RAS2}}$	Row address strobe
$\overline{\text{CAS0}}$ to $\overline{\text{CAS7}}$	Column address strobe
$\overline{\text{WE0}}$ , $\overline{\text{WE2}}$	Read/Write enable
$\overline{\text{OE0}}$ , $\overline{\text{OE2}}$	Output enable
SDA	Serial data out (bit0 to bit7)
SCL	Clock for presence detect
SA0 to SA2	Serial address input
CB0 to CB7*1	Check bit
V <sub>CC</sub>	Power supply
V <sub>SS</sub>	Ground
NC	No connection

Note: 1. This function is supported only HB56UW1673EJN Series.

## HB56UW1673EJN-5/6, HB56UW1665EJN-5/6

### Serial PD Matrix\*<sup>1</sup>

Byte No.	Function described	Bit7	Bit6	Bit5	Bit4	Bit3	Bit2	Bit1	Bit0	Hex value	Comments
0	Number of bytes used by module manufacturer	1	0	0	0	0	0	0	0	80	128 byte
1	Total SPD memory size	0	0	0	0	1	0	0	0	08	256 byte
2	Memory type	0	0	0	0	0	0	1	0	02	EDO
3	Number of row addresses bits	0	0	0	0	1	1	0	0	0C	12
4	Number of column addresses bits	0	0	0	0	1	1	0	0	0C	12
5	Number of banks	0	0	0	0	0	0	0	1	01	1
6	Module data width (HB56UW1673EJN)	0	1	0	0	1	0	0	0	48	72
	(HB56UW1665EJN)	0	1	0	0	0	0	0	0	40	64
7	Module data width (continued)	0	0	0	0	0	0	0	0	00	0 (+)
8	Module interface signal levels	0	0	0	0	0	0	0	1	01	LVTTTL
9	$\overline{\text{RAS}}$ access time										
	-5	0	0	1	1	0	0	1	0	32	$t_{\text{RAC}} = 50 \text{ ns}$
	-6	0	0	1	1	1	1	0	0	3C	$t_{\text{RAC}} = 60 \text{ ns}$
10	$\overline{\text{CAS}}$ access time										
	-5	0	0	0	0	1	1	0	1	0D	$t_{\text{CAC}} = 13 \text{ ns}$
	-6	0	0	0	0	1	1	1	1	0F	$t_{\text{CAC}} = 15 \text{ ns}$
11	Module configuration type (HB56UW1673EJN)	0	0	0	0	0	0	1	0	02	ECC
	(HB56UW1665EJN)	0	0	0	0	0	0	0	0	00	Non parity
12	Refresh rate/type	0	0	0	0	0	0	0	0	00	Normal (15.625 $\mu\text{s}$ )
13	DRAM width	0	0	0	0	0	1	0	0	04	$4\text{M} \times 4$
14	Error checking DRAM width (HB56UW1673EJN)	0	0	0	0	0	1	0	0	04	$4\text{M} \times 4$
	(HB56UW1665EJN)	0	0	0	0	0	0	0	0	00	—
15 to 31	Reserved for future offerings	0	0	0	0	0	0	0	0	00	
32 to 61	Superset information	0	0	0	0	0	0	0	0	00	Future offerings
62	SPD data revision code	0	0	0	0	0	0	0	1	01	Rev.1

## HB56UW1673EJN-5/6, HB56UW1665EJN-5/6

### Serial PD Matrix\*<sup>1</sup>(cont)

Byte No.	Function described	Bit7	Bit6	Bit5	Bit4	Bit3	Bit2	Bit1	Bit0	Hex value	Comments
63	Checksum for bytes 0 to 62 (HB56UW1673EJN-5)	0	0	1	1	0	1	1	0	36	
	(HB56UW1673EJN-6)	0	1	0	0	0	0	1	0	42	
	(HB56UW1665EJN-5)	0	0	1	0	1	0	0	0	28	
	(HB56UW1665EJN-6)	0	0	1	1	0	1	0	0	34	
64	Manufacturer's JEDEC ID code	0	0	0	0	0	1	1	1	07	HITACHI
65 to 71	Manufacturer's JEDEC ID code	0	0	0	0	0	0	0	0	00	
72	Manufacturing location	×	×	×	×	×	×	×	×	×	* <sup>2</sup> (ASCII-8bit code)
73	Manufacturer's part number	0	1	0	0	1	0	0	0	48	H
74	Manufacturer's part number	0	1	0	0	0	0	1	0	42	B
75	Manufacturer's part number	0	0	1	1	0	1	0	1	35	5
76	Manufacturer's part number	0	0	1	1	0	1	1	0	36	6
77	Manufacturer's part number	0	1	0	1	0	1	0	1	55	U
78	Manufacturer's part number	0	1	0	1	0	1	1	1	57	W
79	Manufacturer's part number	0	0	1	1	0	0	0	1	31	1
80	Manufacturer's part number	0	0	1	1	0	1	1	0	36	6
81	Manufacturer's part number (HB56UW1673EJN)	0	0	1	1	0	1	1	1	37	7
	(HB56UW1665EJN)	0	0	1	1	0	1	1	0	36	6
82	Manufacturer's part number (HB56UW1673EJN)	0	0	1	1	0	0	1	1	33	3
	(HB56UW1665EJN)	0	0	1	1	0	1	0	1	35	5
83	Manufacturer's part number	0	1	0	0	0	1	0	1	45	E
84	Manufacturer's part number	0	1	0	0	1	0	1	0	4A	J
85	Manufacturer's part number	0	1	0	0	1	1	1	0	4E	N
86	Manufacturer's part number	0	0	1	0	1	1	0	1	2D	—
87	Manufacturer's part number -5	0	0	1	1	0	1	0	1	35	5
	-6	0	0	1	1	0	1	1	0	36	6
88	Manufacturer's part number	0	0	1	0	0	0	0	0	20	(Space)
89	Manufacturer's part number	0	0	1	0	0	0	0	0	20	(Space)
90	Manufacturer's part number	0	0	1	0	0	0	0	0	20	(Space)
91	Revision code	0	0	1	1	0	0	0	0	30	Initial
92	Revision code	0	0	1	0	0	0	0	0	20	(Space)

## HB56UW1673EJN-5/6, HB56UW1665EJN-5/6

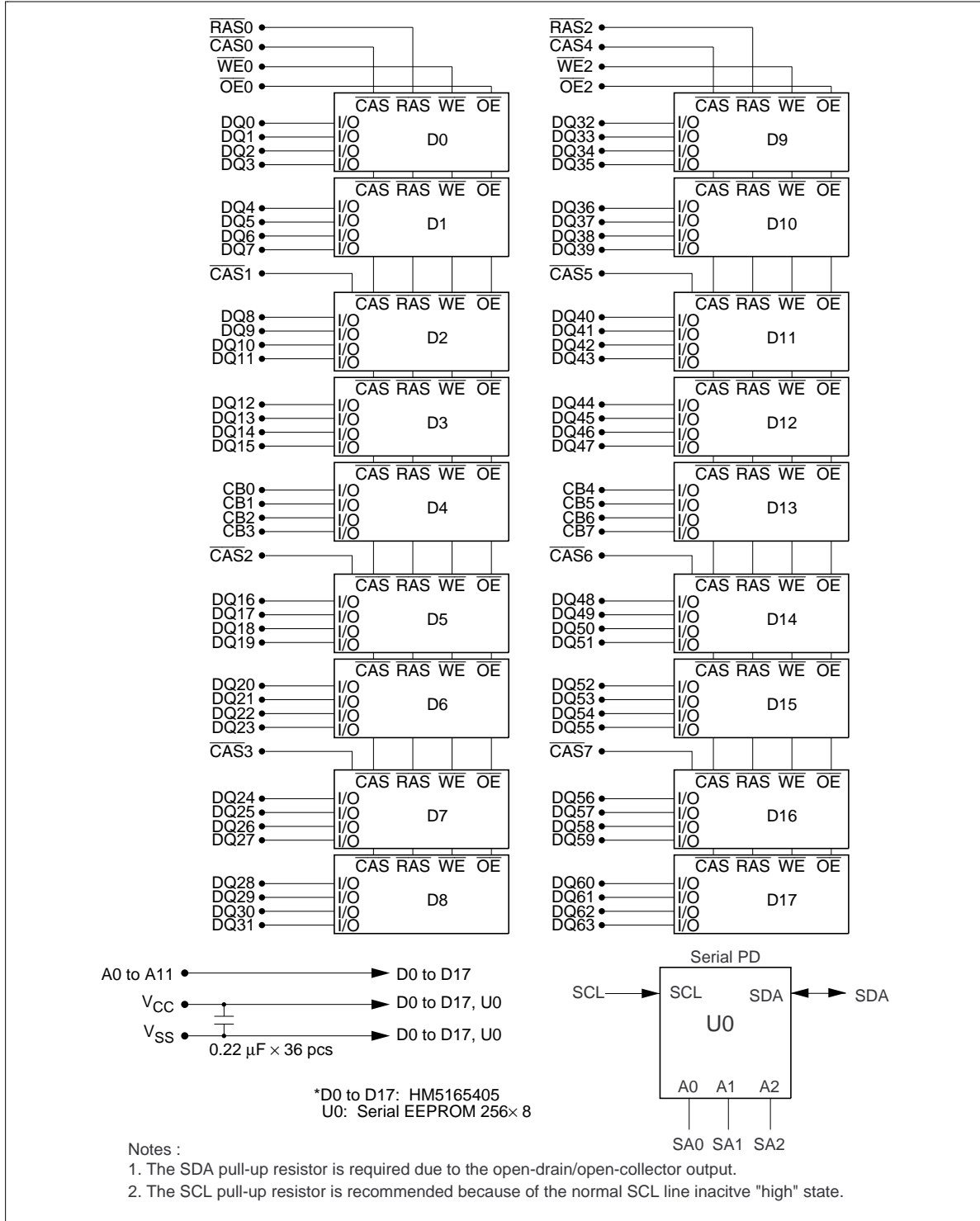
### Serial PD Matrix\*<sup>1</sup>(cont)

Byte No.	Function described	Bit7	Bit6	Bit5	Bit4	Bit3	Bit2	Bit1	Bit0	Hex value	Comments
93	Manufacturing date	x	x	x	x	x	x	x	x	xx	Year code (binary) * <sup>3</sup>
94	Manufacturing date	x	x	x	x	x	x	x	x	xx	Week code (binary) * <sup>4</sup>
95 to 98	Assembly serial number	* <sup>5</sup>									
99 to 125	Manufacturer specific data	* <sup>6</sup>									
126	Reserved	0	0	0	0	0	0	0	0	00	Not use
127	Reserved	0	0	0	0	0	0	0	0	00	Not use

- Notes:
1. All serial PD data are not protected. 0: Serial data, "driven Low", 1: Serial data, "driven High"
  2. Byte 72 is manufacturing location code. (ex: In case of Japan, byte 72 is 4Ah. 4Ah shows "J" on ASCII code.)
  3. Byte 93 (Manufacturing date-year code) ex: 61h shows year'97. 62h shows year'98.
  4. Byte 94 (Manufacturing date-week code) ex: 0Bh shows week 11. 24h shows week 36.
  5. Byte 95 through 98 are assembly serial number.
  6. All bits of 99 through 125 are not defined ("1" or "0").

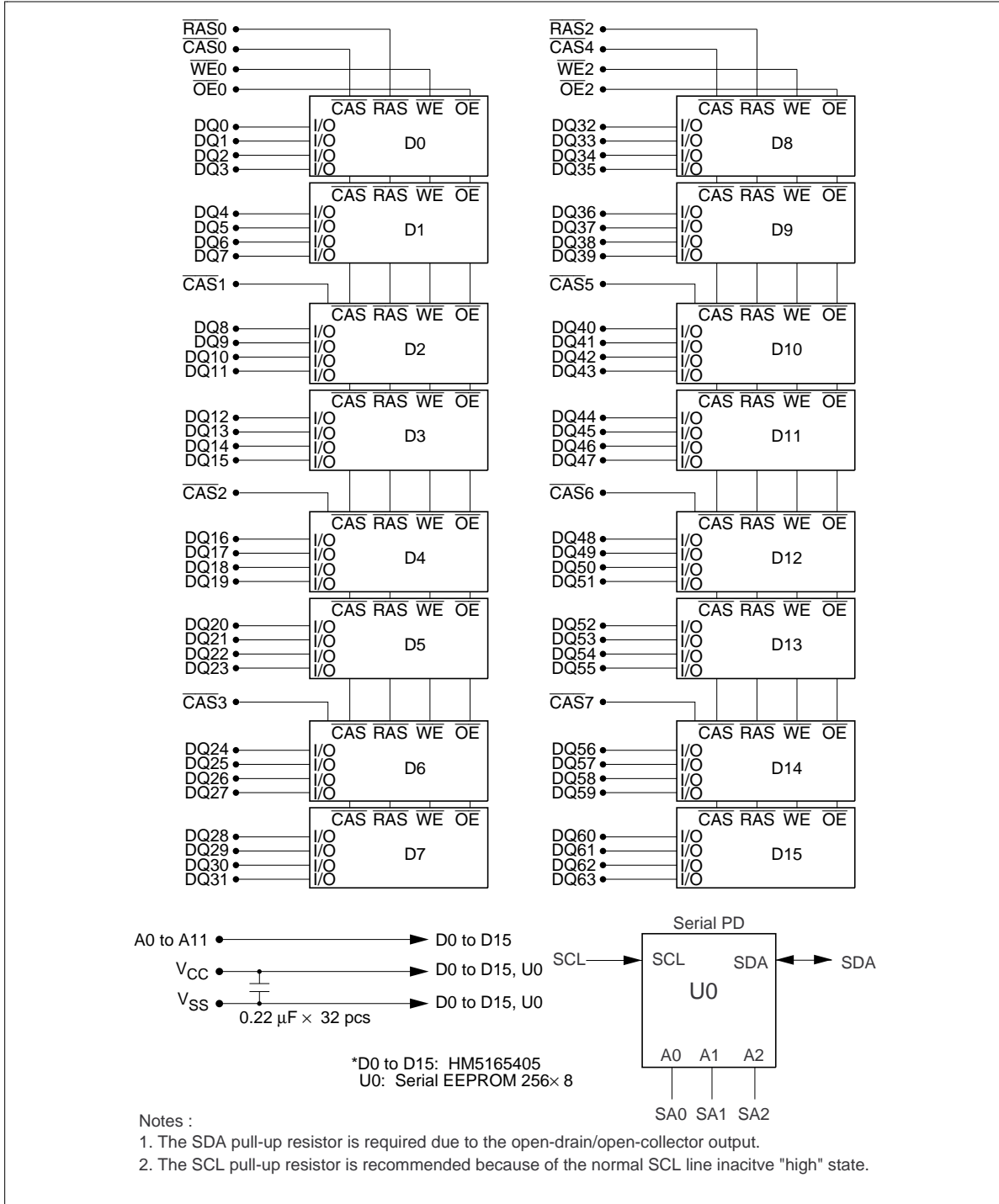
# HB56UW1673EJN-5/6, HB56UW1665EJN-5/6

## Block Diagram (HB56UW1673EJN)



# HB56UW1673EJN-5/6, HB56UW1665EJN-5/6

## Block Diagram (HB56UW1665EJN)



## HB56UW1673EJN-5/6, HB56UW1665EJN-5/6

### Absolute Maximum Ratings (HB56UW1673EJN)

Parameter	Symbol	Value	Unit
Terminal voltage on any pin relative to $V_{SS}$	$V_T$	-0.5 to +4.6	V
Power supply voltage relative to $V_{SS}$	$V_{CC}$	-0.5 to +4.6	V
Short circuit output current	$I_{out}$	50	mA
Power dissipation	$P_T$	18	W
Storage temperature range	$T_{stg}$	-55 to +125	°C

### Absolute Maximum Ratings (HB56UW1665EJN)

Parameter	Symbol	Value	Unit
Terminal voltage on any pin relative to $V_{SS}$	$V_T$	-0.5 to +4.6	V
Power supply voltage relative to $V_{SS}$	$V_{CC}$	-0.5 to +4.6	V
Short circuit output current	$I_{out}$	50	mA
Power dissipation	$P_T$	16	W
Storage temperature range	$T_{stg}$	-55 to +125	°C

### Recommended DC Operating Conditions ( $T_a = 0$ to $+70^\circ\text{C}$ )

Parameter	Symbol	Min	Typ	Max	Unit	Notes
Supply voltage	$V_{CC}$	3.0	3.3	3.6	V	1, 2
	$V_{SS}$	0	0	0	V	2
Input high voltage	$V_{IH}$	2.0	—	$V_{CC} + 0.3$	V	1
Input low voltage	$V_{IL}$	-0.3	—	0.8	V	1
Ambient temperature range	$T_a$	0	—	70	°C	

- Note: 1. All voltage referred to  $V_{SS}$ .  
 2. The supply voltage with all  $V_{CC}$  pins must be on the same level. The supply voltage with all  $V_{SS}$  pins must be on the same level.

## HB56UW1673EJN-5/6, HB56UW1665EJN-5/6

### DC Characteristics (HB56UW1673EJN)

Parameter	Symbol	HB56UW1673EJN				Unit	Test conditions
		50 ns		60 ns			
		Min	Max	Min	Max		
Operating current* <sup>1</sup> , * <sup>2</sup>	$I_{CC1}$	—	2340	—	1980	mA	$t_{RC} = \text{min}$
Standby current	$I_{CC2}$	—	36	—	36	mA	TTL interface $\overline{RAS}, \overline{CAS} = V_{IH}$ Dout = High-Z
		—	9	—	9	mA	CMOS interface $\overline{RAS}, \overline{CAS} \geq V_{CC} - 0.2 \text{ V}$ Dout = High-Z
$\overline{RAS}$ -only refresh current* <sup>2</sup>	$I_{CC3}$	—	2340	—	1980	mA	$t_{RC} = \text{min}$
Standby current* <sup>1</sup>	$I_{CC5}$	—	90	—	90	mA	$\overline{RAS} = V_{IH}, \overline{CAS} = V_{IL}$ Dout = enable
$\overline{CAS}$ -before- $\overline{RAS}$ refresh current	$I_{CC6}$	—	2340	—	1980	mA	$t_{RC} = \text{min}$
EDO page mode current* <sup>1</sup> , * <sup>3</sup>	$I_{CC7}$	—	1980	—	1800	mA	$\overline{RAS} = V_{IL}, \overline{CAS}$ cycle, $t_{HPC} = t_{HPC} \text{ min}$
Input leakage current	$I_{LI}$	-5	5	-5	5	$\mu\text{A}$	$0 \text{ V} \leq V_{in} \leq V_{CC} + 0.3 \text{ V}$
Output leakage current	$I_{LO}$	-5	5	-5	5	$\mu\text{A}$	$0 \text{ V} \leq V_{out} \leq V_{CC}$ Dout = disable
Output high voltage	$V_{OH}$	2.4	$V_{CC}$	2.4	$V_{CC}$	V	High Iout = -2 mA
Output low voltage	$V_{OL}$	0	0.4	0	0.4	V	Low Iout = 2 mA

Notes : 1.  $I_{CC}$  depends on output load condition when the device is selected.  $I_{CC}$  max is specified at the output open condition.

2. Address can be changed once or less while  $\overline{RAS} = V_{IL}$ .

3. Measured with one sequential address change per EDO cycle,  $t_{HPC}$ .

## HB56UW1673EJN-5/6, HB56UW1665EJN-5/6

### DC Characteristics (HB56UW1665EJN)

Parameter	Symbol	HB56UW1665EJN				Unit	Test conditions
		50 ns		60 ns			
		Min	Max	Min	Max		
Operating current* <sup>1</sup> , * <sup>2</sup>	$I_{CC1}$	—	2080	—	1760	mA	$t_{RC} = \text{min}$
Standby current	$I_{CC2}$	—	32	—	32	mA	TTL interface $\overline{\text{RAS}}, \overline{\text{CAS}} = V_{IH}$ Dout = High-Z
		—	8	—	8	mA	CMOS interface $\overline{\text{RAS}}, \overline{\text{CAS}} \geq V_{CC} - 0.2 \text{ V}$ Dout = High-Z
$\overline{\text{RAS}}$ -only refresh current* <sup>2</sup>	$I_{CC3}$	—	2080	—	1760	mA	$t_{RC} = \text{min}$
Standby current* <sup>1</sup>	$I_{CC5}$	—	80	—	80	mA	$\overline{\text{RAS}} = V_{IH}, \overline{\text{CAS}} = V_{IL}$ Dout = enable
$\overline{\text{CAS}}$ -before- $\overline{\text{RAS}}$ refresh current	$I_{CC6}$	—	2080	—	1760	mA	$t_{RC} = \text{min}$
EDO page mode current* <sup>1</sup> , * <sup>3</sup>	$I_{CC7}$	—	1760	—	1600	mA	$\overline{\text{RAS}} = V_{IL}, \overline{\text{CAS}}$ cycle, $t_{HPC} = t_{HPC} \text{ min}$
Input leakage current	$I_{LI}$	-5	5	-5	5	$\mu\text{A}$	$0 \text{ V} \leq V_{in} \leq V_{CC} + 0.3 \text{ V}$
Output leakage current	$I_{LO}$	-5	5	-5	5	$\mu\text{A}$	$0 \text{ V} \leq V_{out} \leq V_{CC}$ Dout = disable
Output high voltage	$V_{OH}$	2.4	$V_{CC}$	2.4	$V_{CC}$	V	High Iout = -2 mA
Output low voltage	$V_{OL}$	0	0.4	0	0.4	V	Low Iout = 2 mA

Notes : 1.  $I_{CC}$  depends on output load condition when the device is selected.  $I_{CC}$  max is specified at the output open condition.

2. Address can be changed once or less while  $\overline{\text{RAS}} = V_{IL}$ .

3. Measured with one sequential address change per EDO cycle,  $t_{HPC}$ .

---

**HB56UW1673EJN-5/6, HB56UW1665EJN-5/6**

---

**Capacitance** ( $T_a = 25^\circ\text{C}$ ,  $V_{CC} = 3.3\text{ V} \pm 0.3\text{ V}$ ) (HB56UW1673EJN)

Parameter	Symbol	Typ	Max	Unit	Notes
Input capacitance (Address)	$C_{11}$	—	110	pF	1
Input capacitance ( $\overline{\text{CAS}}$ )	$C_{12}$	—	41	pF	1
Input capacitance ( $\overline{\text{RAS}}$ , $\overline{\text{WE}}$ , $\overline{\text{OE}}$ )	$C_{13}$	—	83	pF	1
I/O capacitance (DQ)	$C_{I/O}$	—	20	pF	1, 2

Notes : 1. Capacitance measured with Boonton Meter or effective capacitance measuring method.

2.  $\overline{\text{CAS}} = V_{IH}$  to disable Dout.

**Capacitance** ( $T_a = 25^\circ\text{C}$ ,  $V_{CC} = 3.3\text{ V} \pm 0.3\text{ V}$ ) (HB56UW1665EJN)

Parameter	Symbol	Typ	Max	Unit	Notes
Input capacitance (Address)	$C_{11}$	—	100	pF	1
Input capacitance ( $\overline{\text{CAS}}$ )	$C_{12}$	—	34	pF	1
Input capacitance ( $\overline{\text{RAS}}$ , $\overline{\text{WE}}$ , $\overline{\text{OE}}$ )	$C_{13}$	—	76	pF	1
I/O capacitance (DQ)	$C_{I/O}$	—	20	pF	1, 2

Notes : 1. Capacitance measured with Boonton Meter or effective capacitance measuring method.

2.  $\overline{\text{CAS}} = V_{IH}$  to disable Dout.

## HB56UW1673EJN-5/6, HB56UW1665EJN-5/6

**AC Characteristics** ( $T_a = 0$  to  $+70^\circ\text{C}$ ,  $V_{CC} = 3.3 \text{ V} \pm 0.3 \text{ V}$ ,  $V_{SS} = 0 \text{ V}$ ) \*<sup>1</sup>, \*<sup>2</sup>, \*<sup>19</sup>

### Test Conditions

- Input rise and fall time: 2 ns
- Input levels:  $V_{IL} = 0 \text{ V}$ ,  $V_{IH} = 3 \text{ V}$
- Input timing reference levels: 0.8 V, 2.0 V
- Output timing reference levels: 0.8 V, 2.0 V
- Output load: 1 TTL gate +  $C_L$  (100 pF) (Including scope and jig)

### Read, Write, Read-Modify-Write and Refresh Cycles (Common parameters)

Parameter	Symbol	50 ns		60 ns		Unit	Notes
		Min	Max	Min	Max		
Random read or write cycle time	$t_{RC}$	84	—	104	—	ns	
$\overline{\text{RAS}}$ precharge time	$t_{RP}$	30	—	40	—	ns	
$\overline{\text{CAS}}$ precharge time	$t_{CP}$	8	—	10	—	ns	
$\overline{\text{RAS}}$ pulse width	$t_{RAS}$	50	10000	60	10000	ns	
$\overline{\text{CAS}}$ pulse width	$t_{CAS}$	8	10000	10	10000	ns	
Row address setup time	$t_{ASR}$	0	—	0	—	ns	
Row address hold time	$t_{RAH}$	8	—	10	—	ns	
Column address setup time	$t_{ASC}$	0	—	0	—	ns	
Column address hold time	$t_{CAH}$	8	—	10	—	ns	
$\overline{\text{RAS}}$ to $\overline{\text{CAS}}$ delay time	$t_{RCD}$	12	37	14	45	ns	3
$\overline{\text{RAS}}$ to column address delay time	$t_{RAD}$	10	25	12	30	ns	4
$\overline{\text{RAS}}$ hold time	$t_{RSH}$	13	—	15	—	ns	
$\overline{\text{CAS}}$ hold time	$t_{CSH}$	35	—	40	—	ns	
$\overline{\text{CAS}}$ to $\overline{\text{RAS}}$ precharge time	$t_{CRP}$	5	—	5	—	ns	
$\overline{\text{OE}}$ to Din delay time	$t_{OED}$	13	—	15	—	ns	5
$\overline{\text{OE}}$ delay time from Din	$t_{DZO}$	0	—	0	—	ns	6
$\overline{\text{CAS}}$ delay time from Din	$t_{DZC}$	0	—	0	—	ns	6
Transition time (rise and fall)	$t_T$	2	50	2	50	ns	7

## HB56UW1673EJN-5/6, HB56UW1665EJN-5/6

### Read Cycle

Parameter	Symbol	50 ns		60 ns		Unit	Notes
		Min	Max	Min	Max		
Access time from $\overline{\text{RAS}}$	$t_{\text{RAC}}$	—	50	—	60	ns	8, 9
Access time from $\overline{\text{CAS}}$	$t_{\text{CAC}}$	—	13	—	15	ns	9, 10, 17
Access time from address	$t_{\text{AA}}$	—	25	—	30	ns	9, 11, 17
Access time from $\overline{\text{OE}}$	$t_{\text{OEA}}$	—	13	—	15	ns	9
Read command setup time	$t_{\text{RCS}}$	0	—	0	—	ns	
Read command hold time to $\overline{\text{CAS}}$	$t_{\text{RCH}}$	0	—	0	—	ns	12
Read command hold time from $\overline{\text{RAS}}$	$t_{\text{RCHR}}$	50	—	60	—	ns	
Read command hold time to $\overline{\text{RAS}}$	$t_{\text{RRH}}$	0	—	0	—	ns	12
Column address to $\overline{\text{RAS}}$ lead time	$t_{\text{RAL}}$	25	—	30	—	ns	
Column address to $\overline{\text{CAS}}$ lead time	$t_{\text{CAL}}$	15	—	18	—	ns	
$\overline{\text{CAS}}$ to output in low-Z	$t_{\text{CLZ}}$	0	—	0	—	ns	
Output data hold time	$t_{\text{OH}}$	3	—	3	—	ns	21
Output data hold time from $\overline{\text{OE}}$	$t_{\text{OHO}}$	3	—	3	—	ns	
Output buffer turn-off time	$t_{\text{OFF}}$	—	13	—	15	ns	13, 21
Output buffer turn-off to $\overline{\text{OE}}$	$t_{\text{OEZ}}$	—	13	—	15	ns	13
$\overline{\text{CAS}}$ to Din delay time	$t_{\text{CDD}}$	13	—	15	—	ns	5
Output data hold time from $\overline{\text{RAS}}$	$t_{\text{OHR}}$	3	—	3	—	ns	21
Output buffer turn-off to $\overline{\text{RAS}}$	$t_{\text{OFR}}$	—	13	—	15	ns	13, 21
Output buffer turn-off to $\overline{\text{WE}}$	$t_{\text{WEZ}}$	—	13	—	15	ns	13
$\overline{\text{WE}}$ to Din delay time	$t_{\text{WED}}$	13	—	15	—	ns	
$\overline{\text{RAS}}$ to Din delay time	$t_{\text{RDD}}$	13	—	15	—	ns	

### Write Cycle

Parameter	Symbol	50 ns		60 ns		Unit	Notes
		Min	Max	Min	Max		
Write command setup time	$t_{\text{WCS}}$	0	—	0	—	ns	14
Write command hold time	$t_{\text{WCH}}$	8	—	10	—	ns	
Write command pulse width	$t_{\text{WCP}}$	8	—	10	—	ns	
Write command to $\overline{\text{RAS}}$ lead time	$t_{\text{RWL}}$	13	—	15	—	ns	
Write command to $\overline{\text{CAS}}$ lead time	$t_{\text{CWL}}$	8	—	10	—	ns	
Data-in setup time	$t_{\text{DS}}$	0	—	0	—	ns	15
Data-in hold time	$t_{\text{DH}}$	8	—	10	—	ns	15

## HB56UW1673EJN-5/6, HB56UW1665EJN-5/6

### Read-Modify-Write Cycle

Parameter	Symbol	50 ns		60 ns		Unit	Notes
		Min	Max	Min	Max		
Read-modify-write cycle time	$t_{RWC}$	116	—	140	—	ns	
$\overline{RAS}$ to $\overline{WE}$ delay time	$t_{RWD}$	67	—	79	—	ns	14
$\overline{CAS}$ to $\overline{WE}$ delay time	$t_{CWD}$	30	—	34	—	ns	14
Column address to $\overline{WE}$ delay time	$t_{AWD}$	42	—	49	—	ns	14
$\overline{OE}$ hold time from $\overline{WE}$	$t_{OEH}$	13	—	15	—	ns	

### Refresh Cycle

Parameter	Symbol	50 ns		60 ns		Unit	Notes
		Min	Max	Min	Max		
$\overline{CAS}$ setup time (CBR refresh cycle)	$t_{CSR}$	5	—	5	—	ns	
$\overline{CAS}$ hold time (CBR refresh cycle)	$t_{CHR}$	8	—	10	—	ns	
$\overline{WE}$ setup time (CBR refresh cycle)	$t_{WRP}$	0	—	0	—	ns	
$\overline{WE}$ hold time (CBR refresh cycle)	$t_{WRH}$	8	—	10	—	ns	
$\overline{RAS}$ precharge to $\overline{CAS}$ hold time	$t_{RPC}$	5	—	5	—	ns	

### EDO Page Mode Cycle

Parameter	Symbol	50 ns		60 ns		Unit	Notes
		Min	Max	Min	Max		
EDO page mode cycle time	$t_{HPC}$	20	—	25	—	ns	20
EDO page mode $\overline{RAS}$ pulse width	$t_{RASP}$	—	100000	—	100000	ns	16
Access time from $\overline{CAS}$ precharge	$t_{CPA}$	—	28	—	35	ns	9, 17
$\overline{RAS}$ hold time from $\overline{CAS}$ precharge	$t_{CPRH}$	28	—	35	—	ns	
Output data hold time from $\overline{CAS}$ low	$t_{DOH}$	3	—	3	—	ns	9, 22
$\overline{CAS}$ hold time referred $\overline{OE}$	$t_{COL}$	8	—	10	—	ns	
$\overline{CAS}$ to $\overline{OE}$ setup time	$t_{COP}$	5	—	5	—	ns	
Read command hold time from $\overline{CAS}$ precharge	$t_{RCHC}$	28	—	35	—	ns	
Write pulse width during $\overline{CAS}$ precharge	$t_{WPE}$	8	—	10	—	ns	
$\overline{OE}$ precharge time	$t_{OEP}$	8	—	10	—	ns	

## HB56UW1673EJN-5/6, HB56UW1665EJN-5/6

### EDO Page Mode Read-Modify-Write Cycle

Parameter	Symbol	50 ns		60 ns		Unit	Notes
		Min	Max	Min	Max		
EDO page mode read- modify-write cycle time	$t_{\text{HPRWC}}$	57	—	68	—	ns	
$\overline{\text{WE}}$ delay time from $\overline{\text{CAS}}$ precharge	$t_{\text{CPW}}$	45	—	54	—	ns	14

### Refresh

Parameter	Symbol	Max	Unit	Notes
Refresh period	$t_{\text{REF}}$	64	ms	4096 cycles

Notes: 1. AC measurements assume  $t_r = 2$  ns.

2. An initial pause of 200  $\mu\text{s}$  is required after power up followed by a minimum of eight initialization cycles (any combination of cycles containing RAS-only refresh or  $\overline{\text{CAS}}$ -before-RAS refresh).
3. Operation with the  $t_{\text{RCD}}$  (max) limit insures that  $t_{\text{RAC}}$  (max) can be met,  $t_{\text{RCD}}$  (max) is specified as a reference point only; if  $t_{\text{RCD}}$  is greater than the specified  $t_{\text{RCD}}$  (max) limit, then the access time is controlled exclusively by  $t_{\text{CAC}}$ .
4. Operation with the  $t_{\text{RAD}}$  (max) limit insures that  $t_{\text{RAC}}$  (max) can be met,  $t_{\text{RAD}}$  (max) is specified as a reference point only; if  $t_{\text{RAD}}$  is greater than the specified  $t_{\text{RAD}}$  (max) limit, then access time is controlled exclusively by  $t_{\text{AA}}$ .
5. Either  $t_{\text{OED}}$  or  $t_{\text{CDD}}$  must be satisfied.
6. Either  $t_{\text{DZO}}$  or  $t_{\text{DZC}}$  must be satisfied.
7.  $V_{\text{IH}}$  (min) and  $V_{\text{IL}}$  (max) are reference levels for measuring timing of input signals. Also, transition times are measured between  $V_{\text{IH}}$  (min) and  $V_{\text{IL}}$  (max).
8. Assumes that  $t_{\text{RCD}} \leq t_{\text{RCD}}$  (max) and  $t_{\text{RAD}} \leq t_{\text{RAD}}$  (max). If  $t_{\text{RCD}}$  or  $t_{\text{RAD}}$  is greater than the maximum recommended value shown in this table,  $t_{\text{RAC}}$  exceeds the value shown.
9. Measured with a load circuit equivalent to 1 TTL loads and 100 pF.
10. Assumes that  $t_{\text{RCD}} \geq t_{\text{RCD}}$  (max) and  $t_{\text{RCD}} + t_{\text{CAC}}$  (max)  $\geq t_{\text{RAD}} + t_{\text{AA}}$  (max).
11. Assumes that  $t_{\text{RAD}} \geq t_{\text{RAD}}$  (max) and  $t_{\text{RCD}} + t_{\text{CAC}}$  (max)  $\leq t_{\text{RAD}} + t_{\text{AA}}$  (max).
12. Either  $t_{\text{RCH}}$  or  $t_{\text{RRH}}$  must be satisfied for a read cycles.
13.  $t_{\text{OFF}}$  (max),  $t_{\text{OEZ}}$  (max),  $t_{\text{WEZ}}$  (max) and  $t_{\text{OFR}}$  (max) define the time at which the outputs achieve the open circuit condition and are not referred to output voltage levels.
14.  $t_{\text{WCS}}$ ,  $t_{\text{RWD}}$ ,  $t_{\text{CWD}}$ ,  $t_{\text{AWD}}$  and  $t_{\text{CPW}}$  are not restrictive operating parameters. They are included in the data sheet as electrical characteristics only; if  $t_{\text{WCS}} \geq t_{\text{WCS}}$  (min), the cycle is an early write cycle and the data out pin will remain open circuit (high impedance) throughout the entire cycle; if  $t_{\text{RWD}} \geq t_{\text{RWD}}$  (min),  $t_{\text{CWD}} \geq t_{\text{CWD}}$  (min), and  $t_{\text{AWD}} \geq t_{\text{AWD}}$  (min), or  $t_{\text{CWD}} \geq t_{\text{CWD}}$  (min),  $t_{\text{AWD}} \geq t_{\text{AWD}}$  (min) and  $t_{\text{CPW}} \geq t_{\text{CPW}}$  (min), the cycle is a read-modify-write and the data output will contain data read from the selected cell; if neither of the above sets of conditions is satisfied, the condition of the data out (at access time) is indeterminate.
15.  $t_{\text{DS}}$  and  $t_{\text{DH}}$  are referred to  $\overline{\text{CAS}}$  leading edge in early write cycles and to  $\overline{\text{WE}}$  leading edge in delayed write or read-modify-write cycles.
16.  $t_{\text{RASP}}$  defines  $\overline{\text{RAS}}$  pulse width in EDO page mode cycles.
17. Access time is determined by the longest among  $t_{\text{AA}}$ ,  $t_{\text{CAC}}$  and  $t_{\text{CPA}}$ .
18. In delayed write or read-modify-write cycles,  $\overline{\text{OE}}$  must disable output buffer prior to applying data to the device.

---

## HB56UW1673EJN-5/6, HB56UW1665EJN-5/6

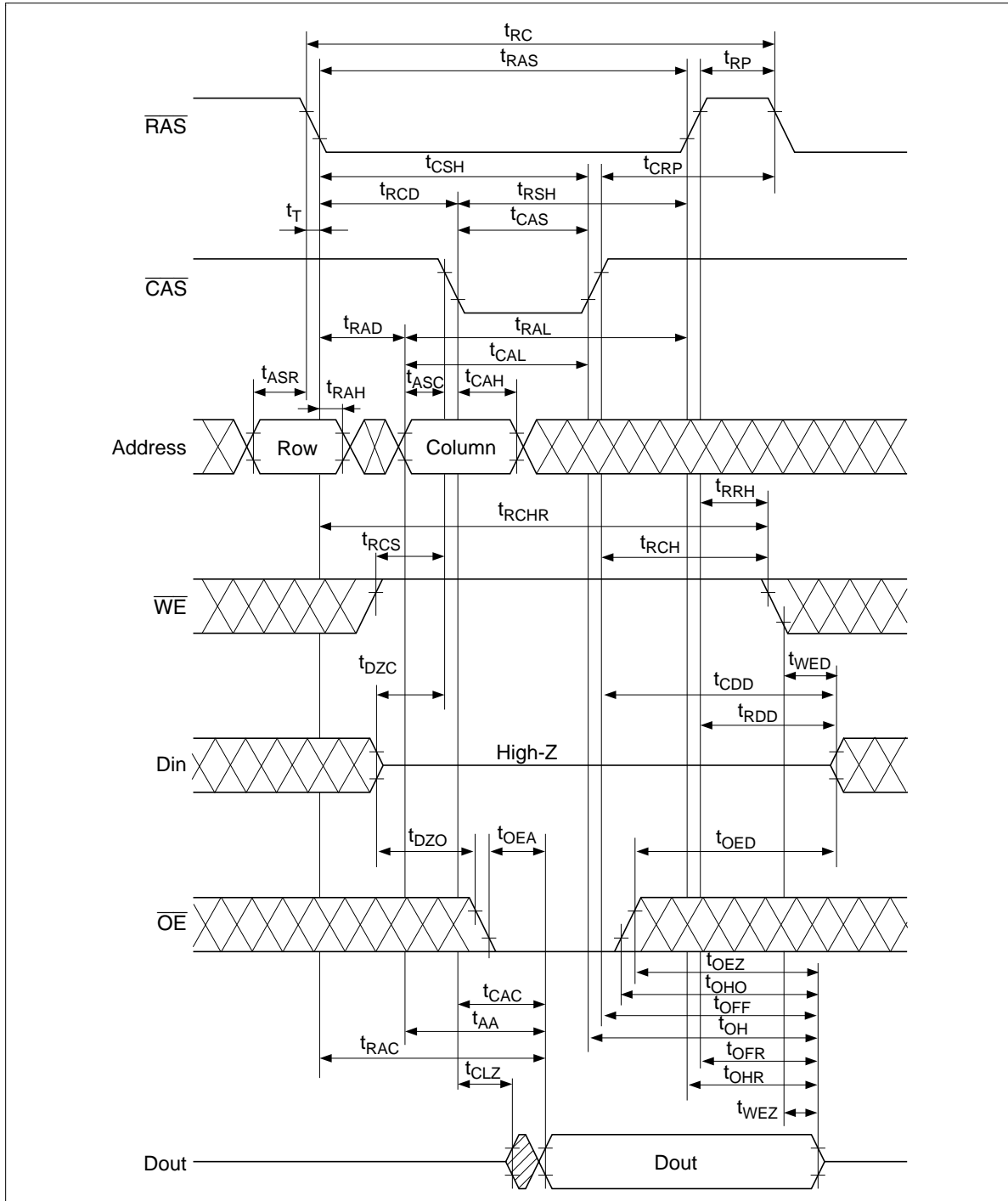
---

19. When output buffers are enabled once, sustain the low impedance state until valid data is obtained. When output buffer is turned on and off within a very short time, generally it causes large  $V_{CC}/V_{SS}$  line noise, which causes to degrade  $V_{IH\ min}/V_{IL\ max}$  level.
20.  $t_{HPC}$  (min) can be achieved during a series of EDO page mode write cycles or EDO page mode read cycles. If both write and read operation are mixed in a EDO page mode  $\overline{RAS}$  cycle (EDO page mode mix cycle (1), (2)), minimum value of  $\overline{CAS}$  cycle ( $t_{CAS} + t_{CP} + 2 t_T$ ) becomes greater than the specified  $t_{HPC}$  (min) value. The value of  $\overline{CAS}$  cycle time of mixed EDO page mode is shown in EDO page mode mix cycle (1) and (2).
21. Data output turns off and becomes high impedance from later rising edge of  $\overline{RAS}$  and  $\overline{CAS}$ . Hold time and turn off time are specified by the timing specifications of later rising edge of  $\overline{RAS}$  and  $\overline{CAS}$  between  $t_{OHR}$  and  $t_{OH}$  and between  $t_{OFR}$  and  $t_{OFF}$ .
22.  $t_{DOH}$  defines the time at which the output level go cross.  $V_{OL} = 0.8\ V$ ,  $V_{OH} = 2.0\ V$  of output timing reference level.
23. XXX: H or L (H:  $V_{IH\ (min)} \leq V_{IN} \leq V_{IH\ (max)}$ , L:  $V_{IL\ (min)} \leq V_{IN} \leq V_{IL\ (max)}$ )  
////////: Invalid Dout  
When the address, clock and input pins are not described on timing waveforms, their pins must be applied  $V_{IH}$  or  $V_{IL}$ .

# HB56UW1673EJN-5/6, HB56UW1665EJN-5/6

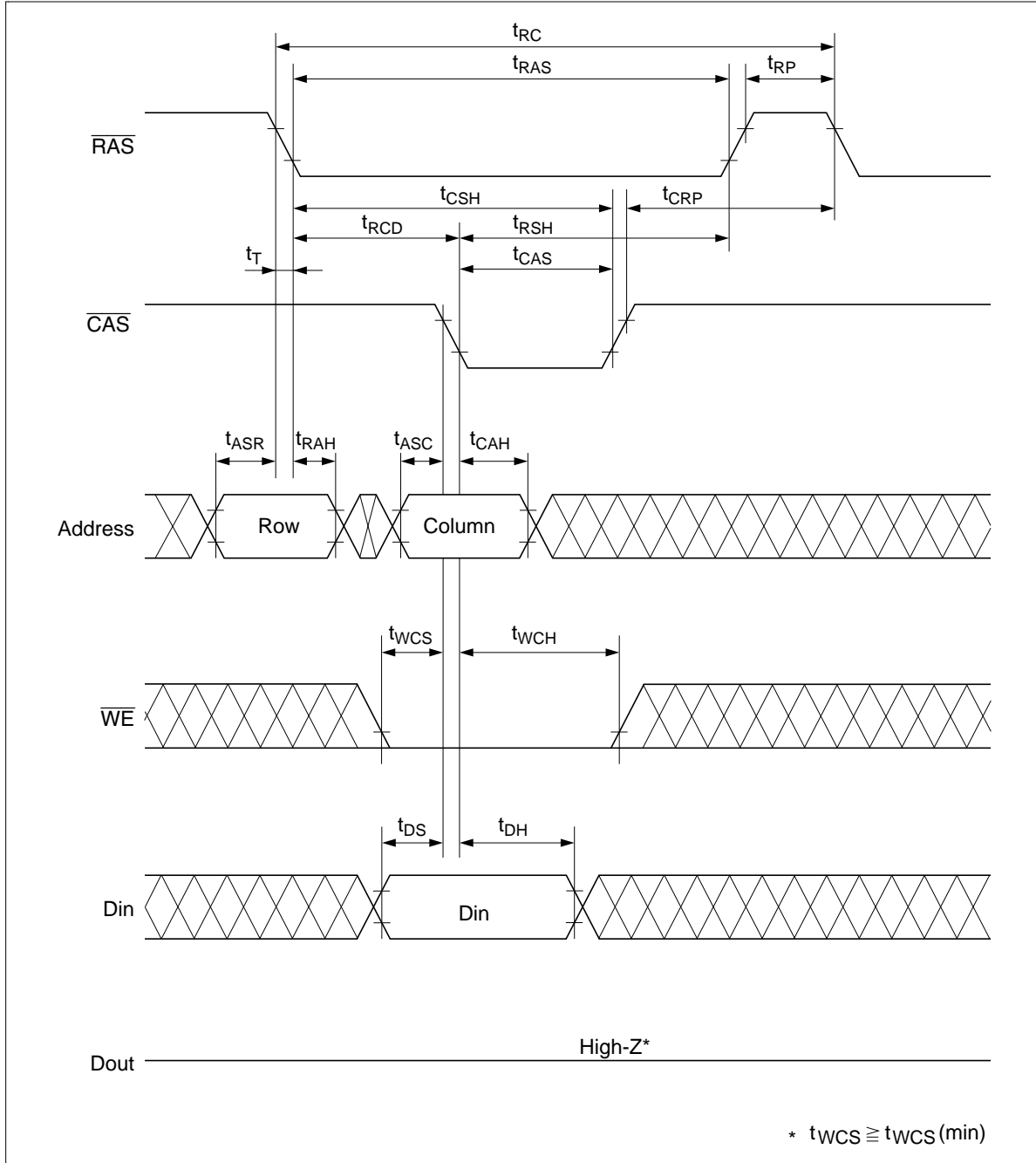
## Timing Waveforms\*23

### Read Cycle



# HB56UW1673EJN-5/6, HB56UW1665EJN-5/6

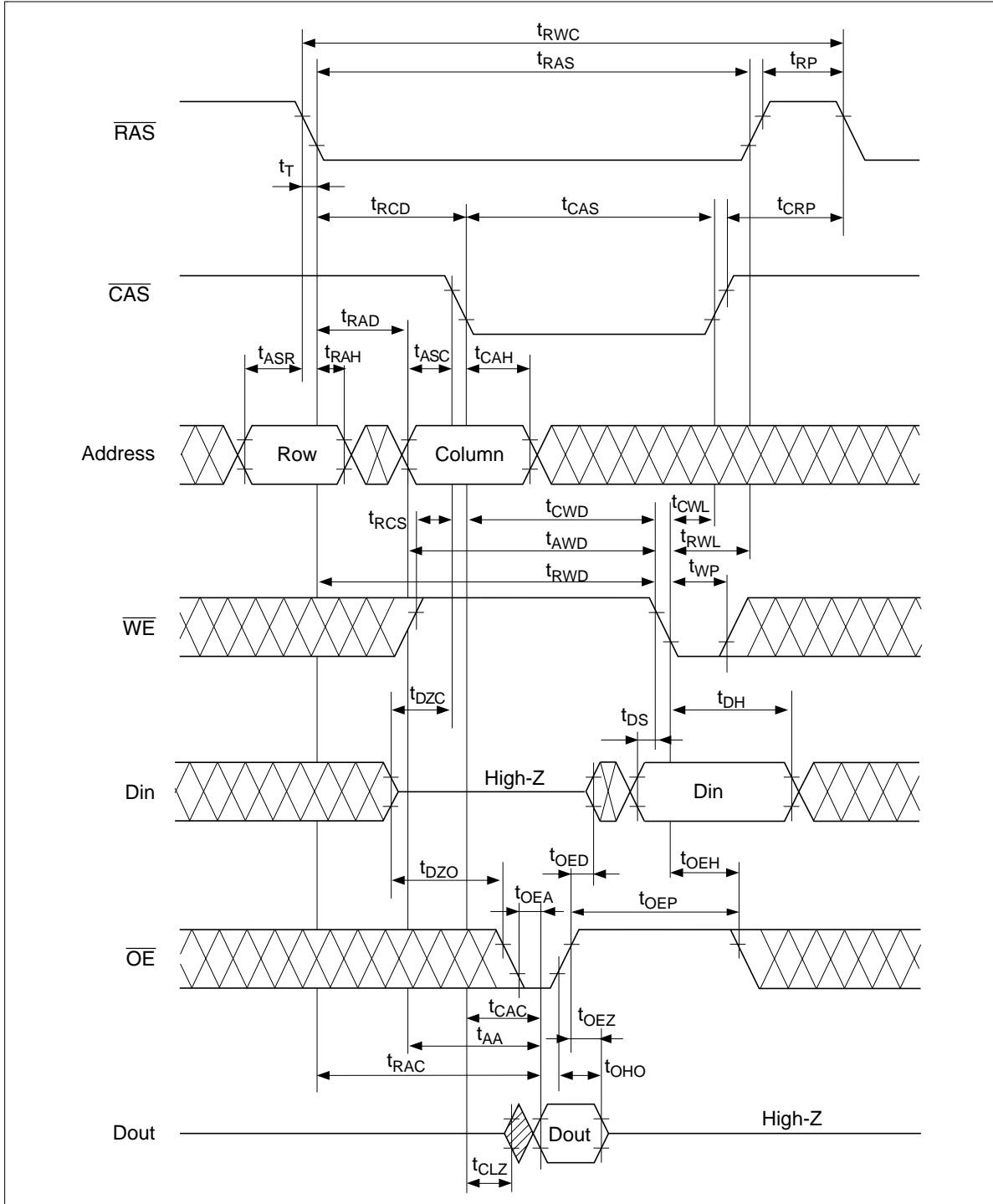
## Early Write Cycle





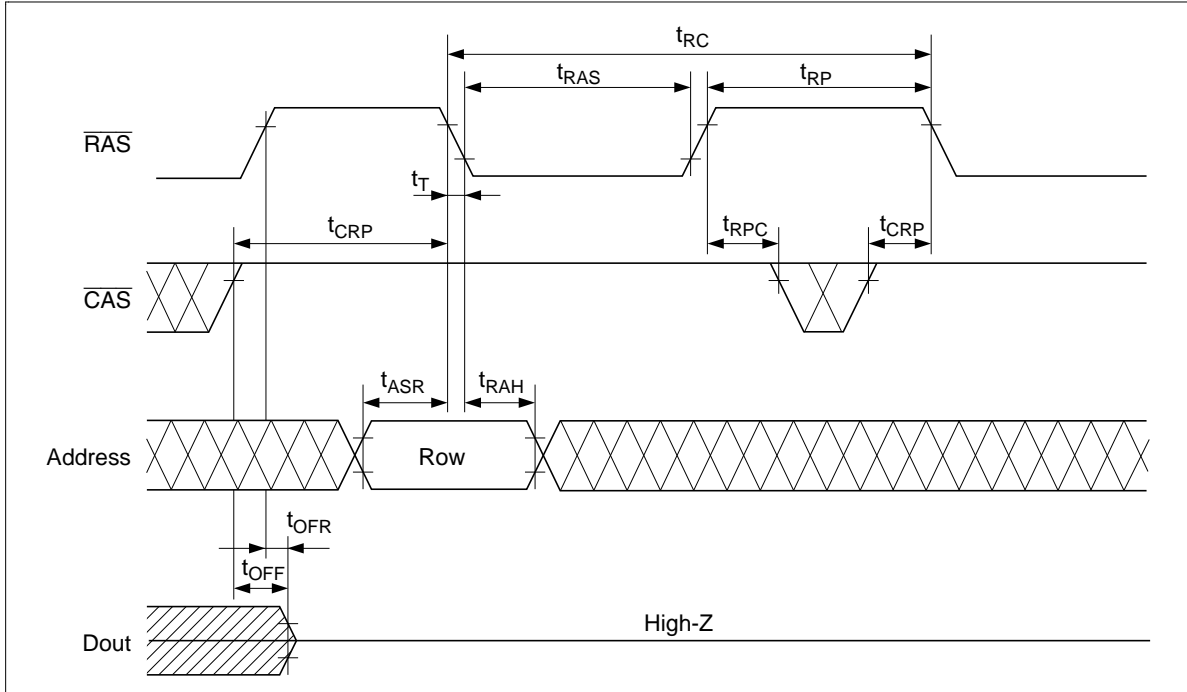
# HB56UW1673EJN-5/6, HB56UW1665EJN-5/6

## Read-Modify-Write Cycle\*18



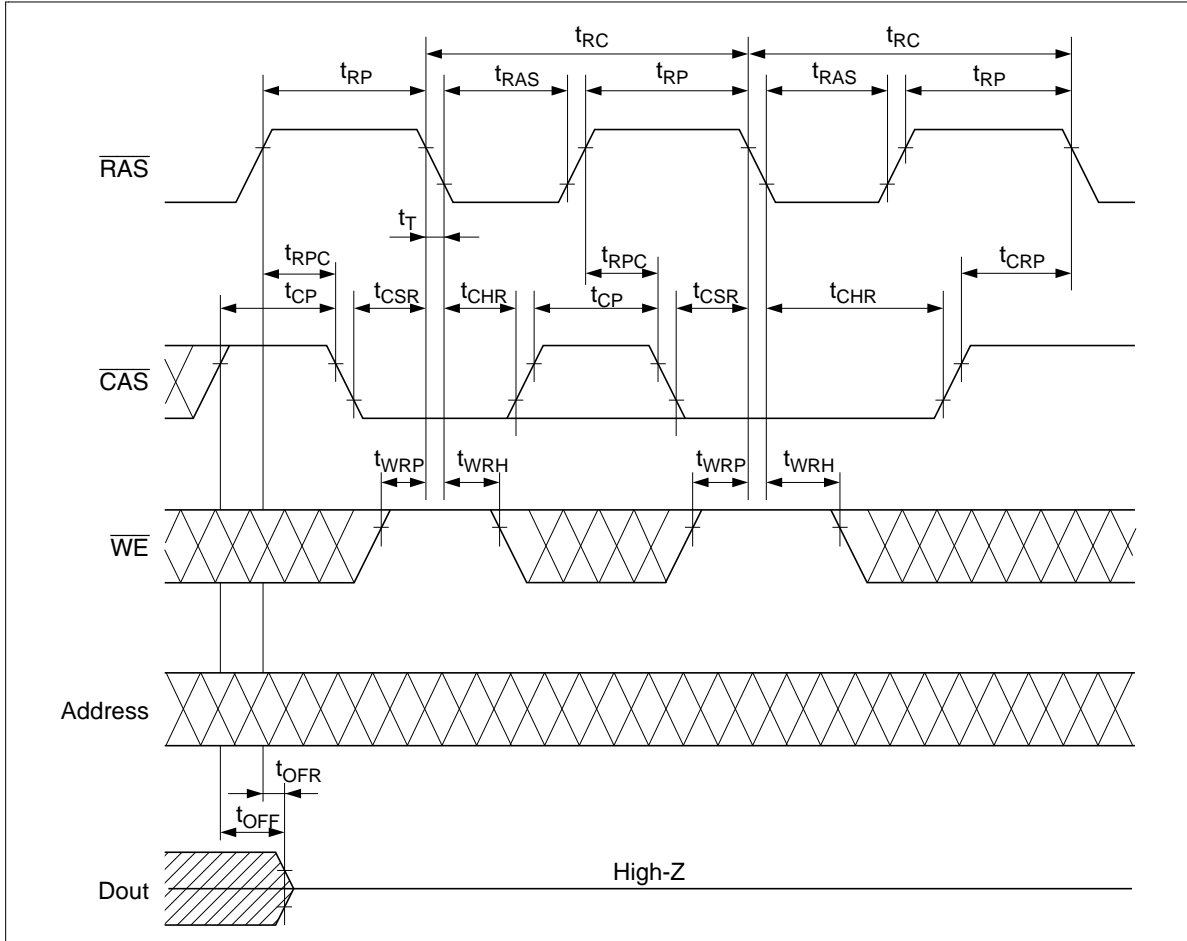
# HB56UW1673EJN-5/6, HB56UW1665EJN-5/6

## $\overline{\text{RAS}}$ -Only Refresh Cycle



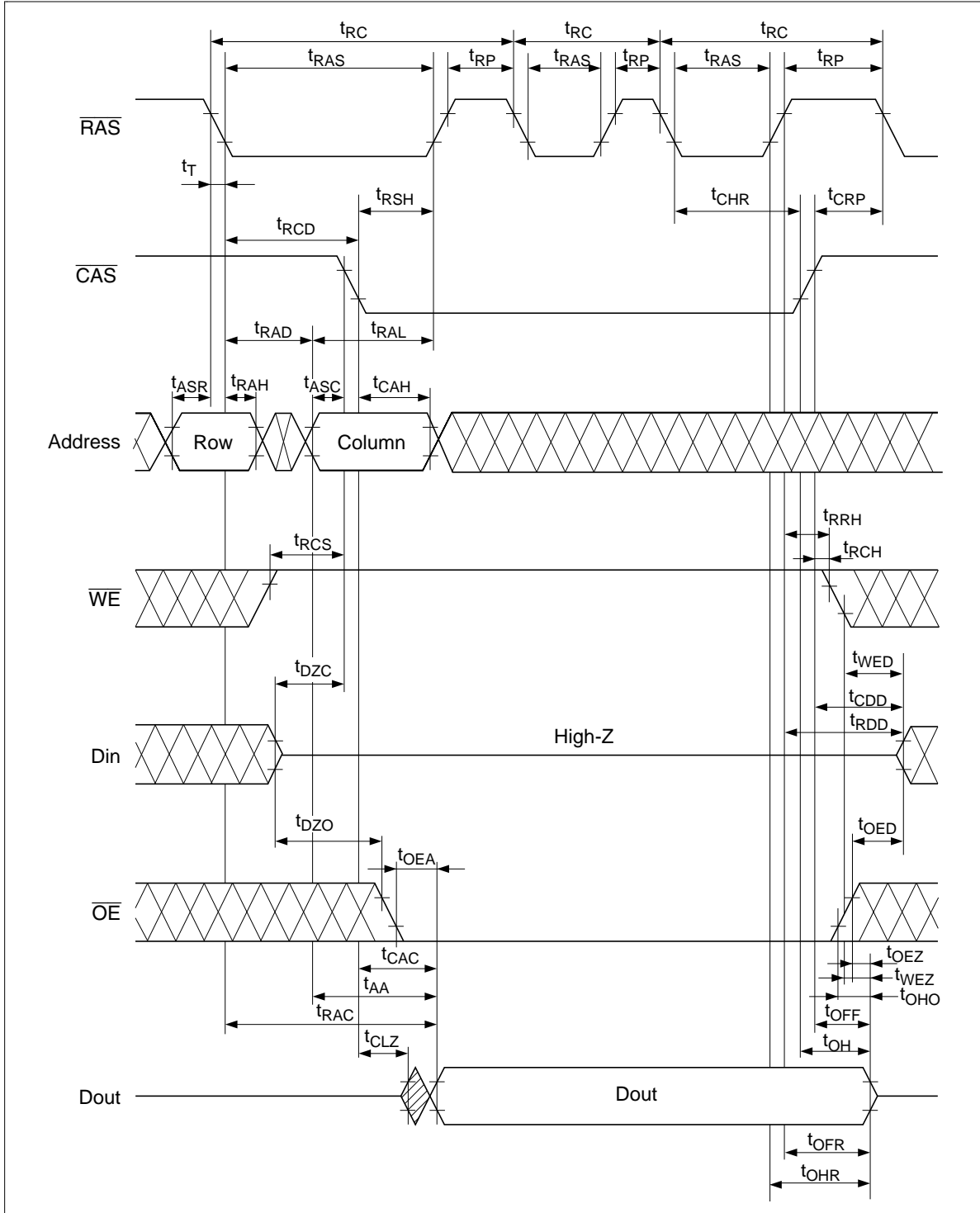
**HB56UW1673EJN-5/6, HB56UW1665EJN-5/6**

**$\overline{\text{CAS}}$ -Before- $\overline{\text{RAS}}$  Refresh Cycle**



# HB56UW1673EJN-5/6, HB56UW1665EJN-5/6

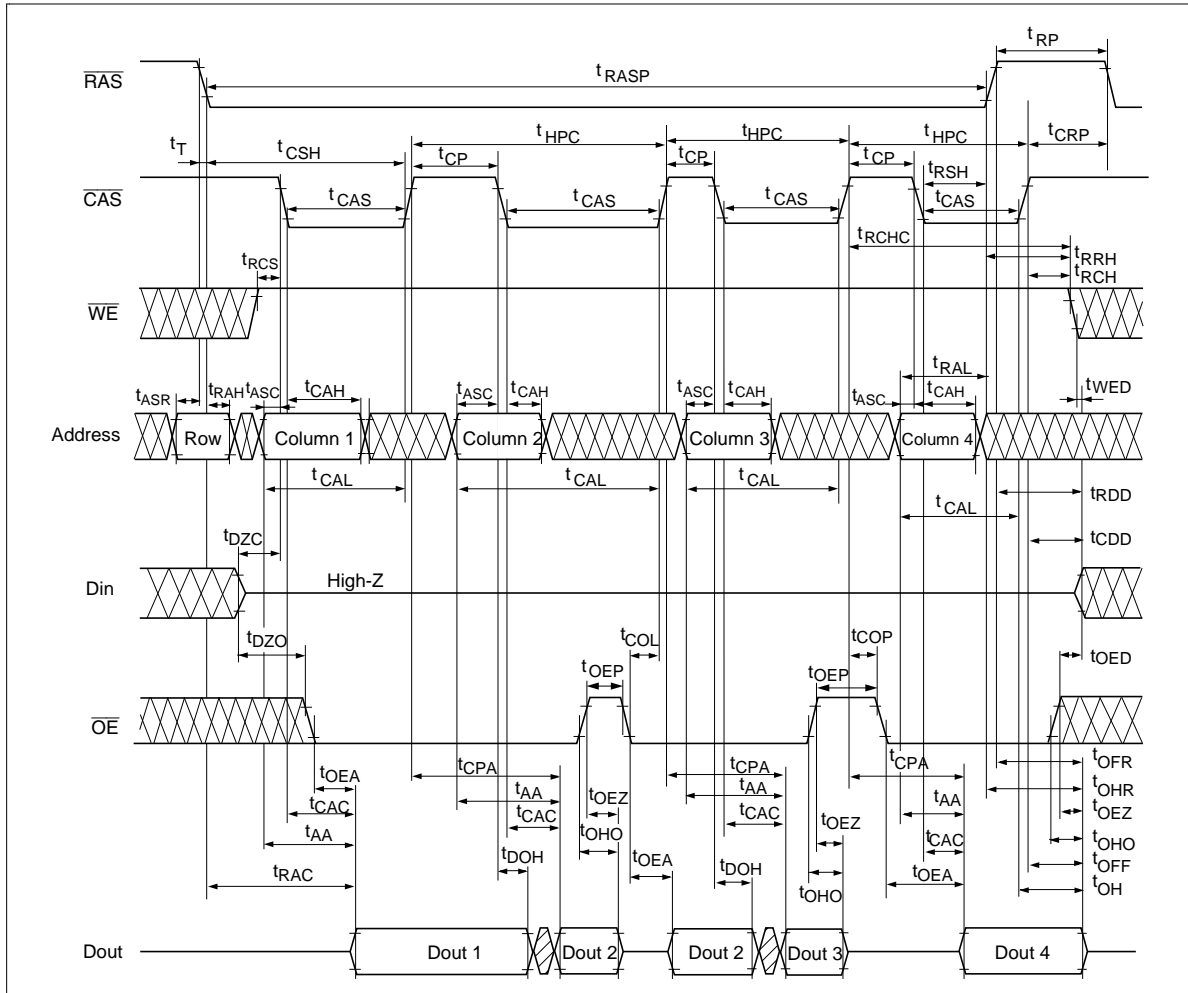
## Hidden Refresh Cycle





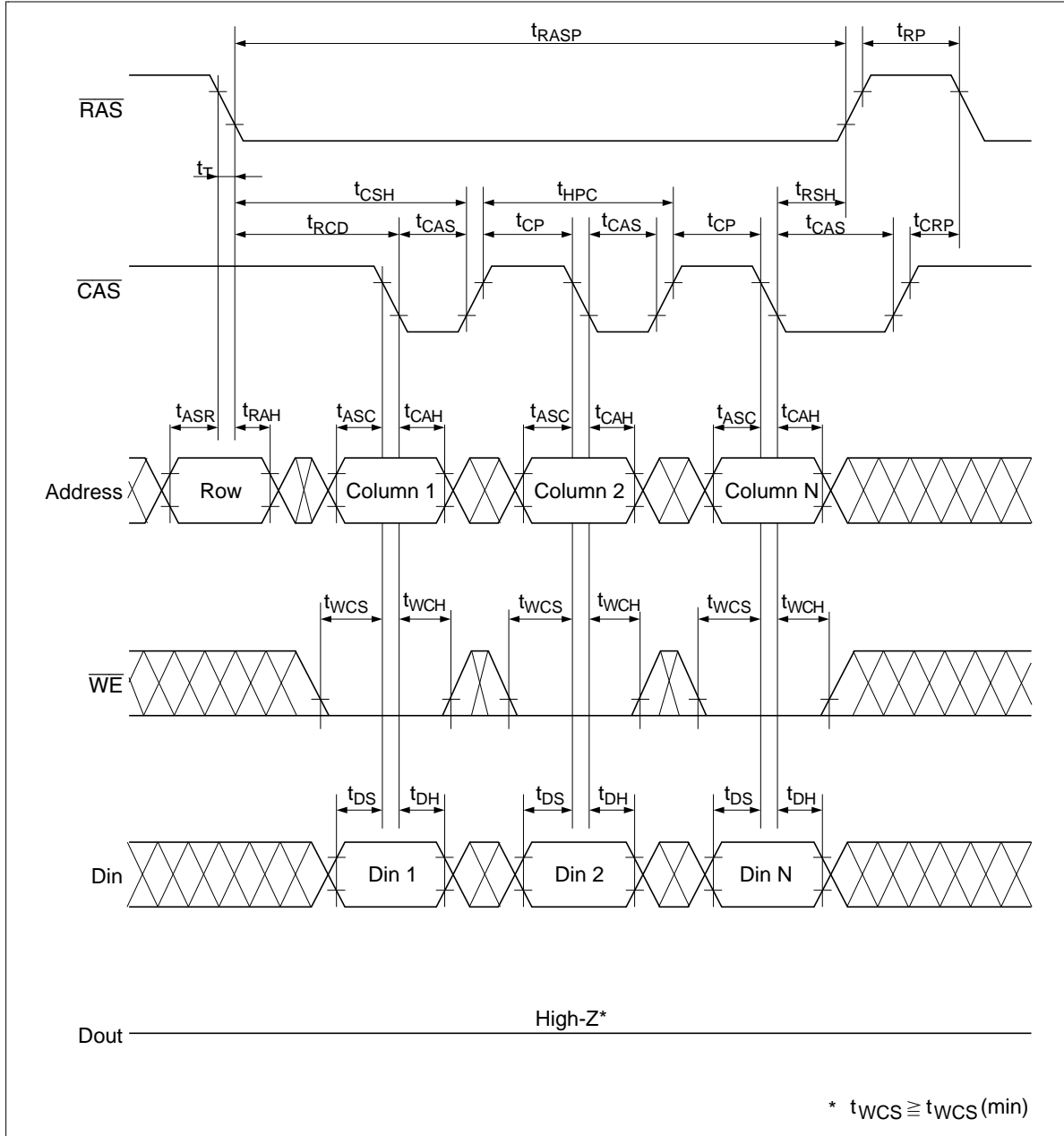
# HB56UW1673EJN-5/6, HB56UW1665EJN-5/6

## EDO Page Mode Read Cycle (2)



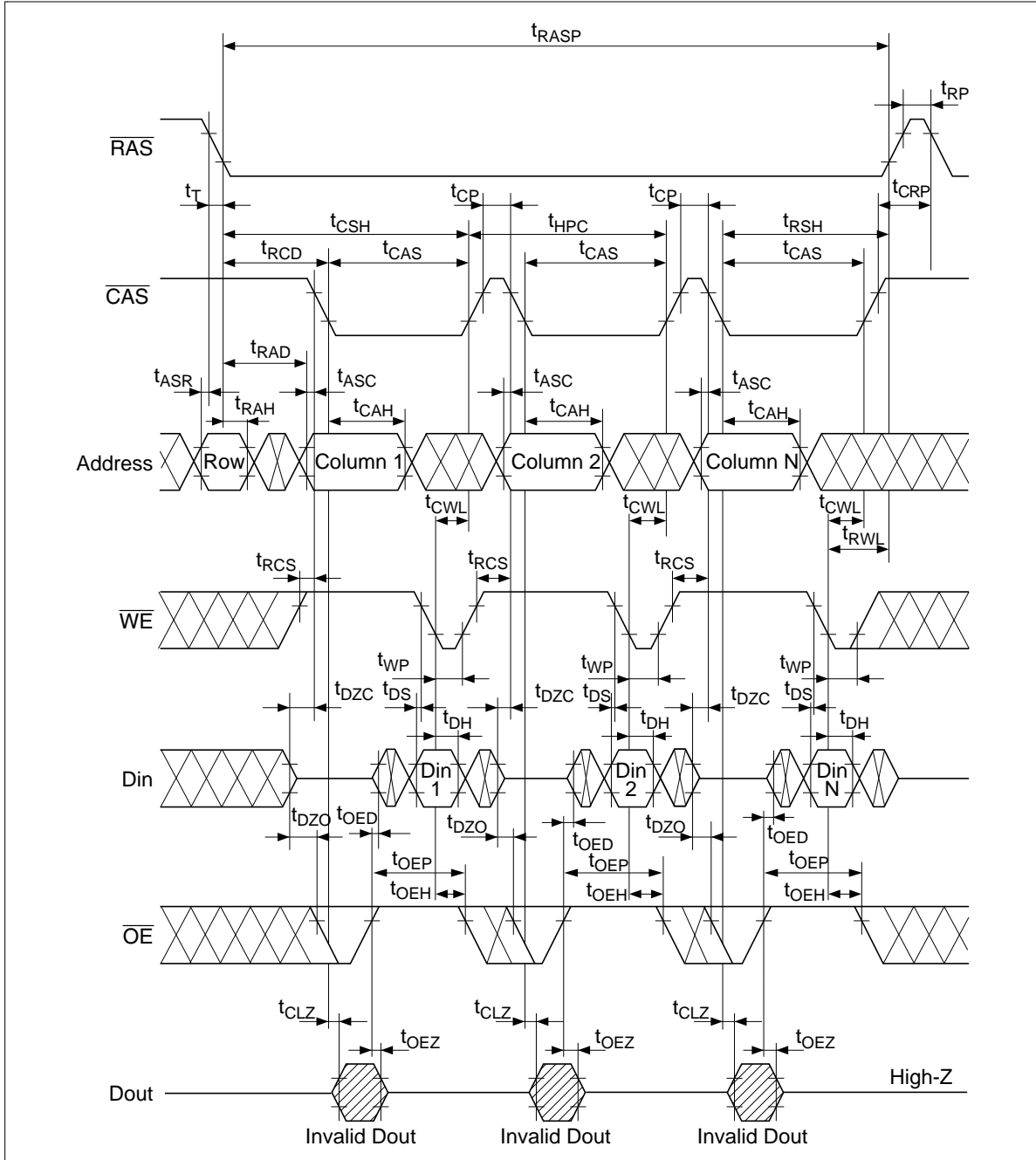
# HB56UW1673EJN-5/6, HB56UW1665EJN-5/6

## EDO Page Mode Early Write Cycle



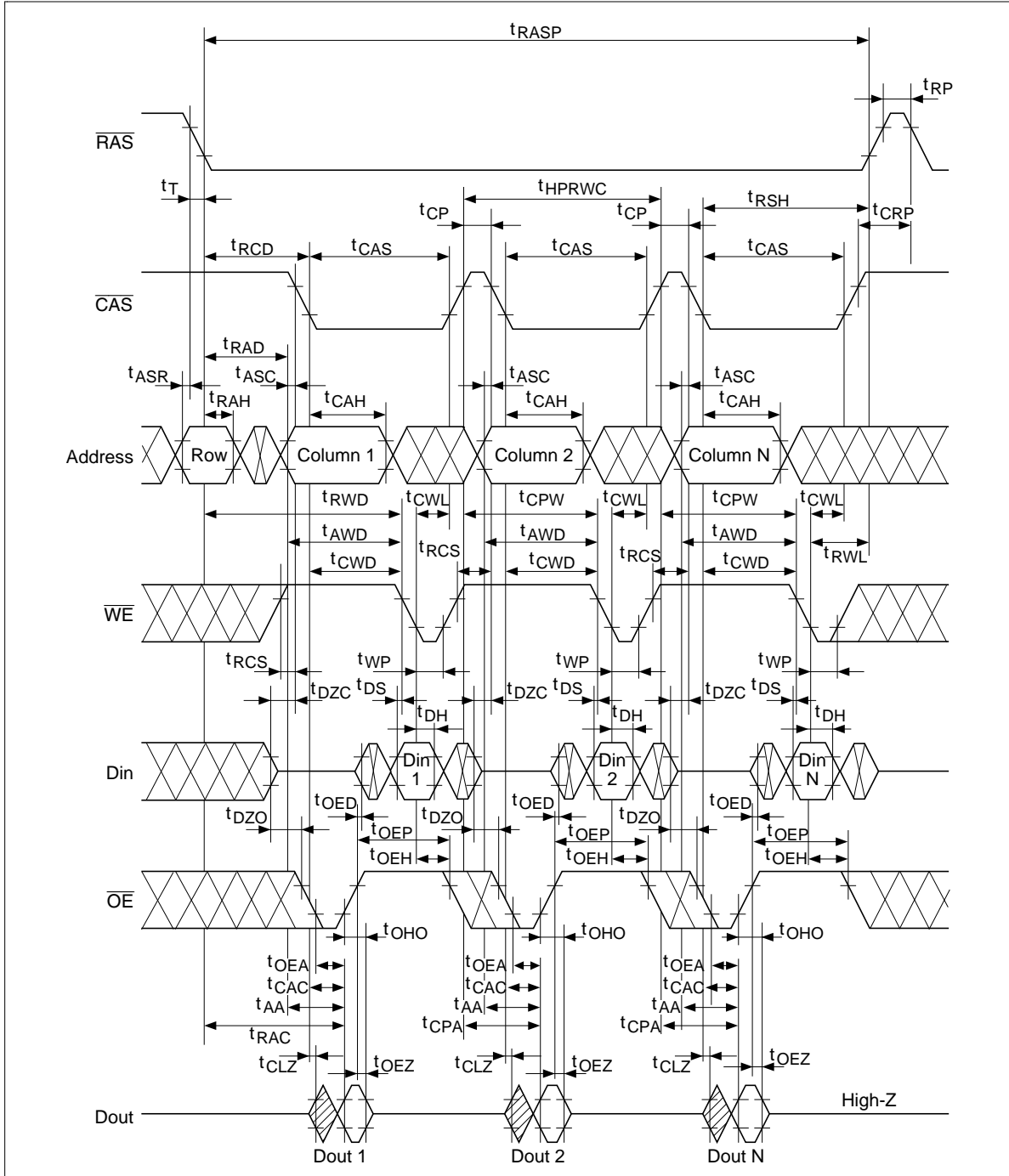
# HB56UW1673EJN-5/6, HB56UW1665EJN-5/6

## EDO Page Mode Delayed Write Cycle\*18



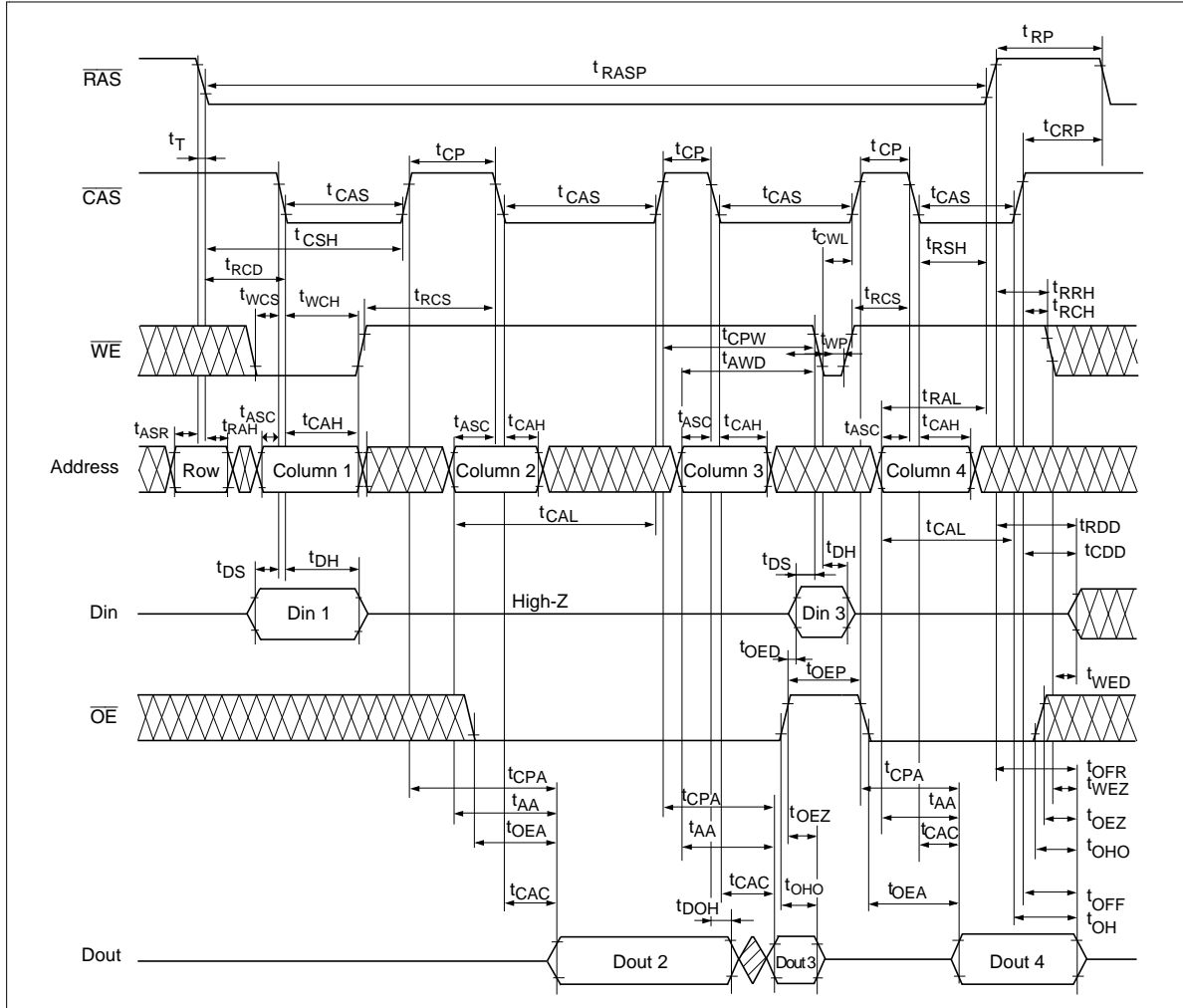
# HB56UW1673EJN-5/6, HB56UW1665EJN-5/6

## EDO Page Mode Read-Modify-Write Cycle\*18



# HB56UW1673EJN-5/6, HB56UW1665EJN-5/6

## EDO Page Mode Mix Cycle (1) \*20

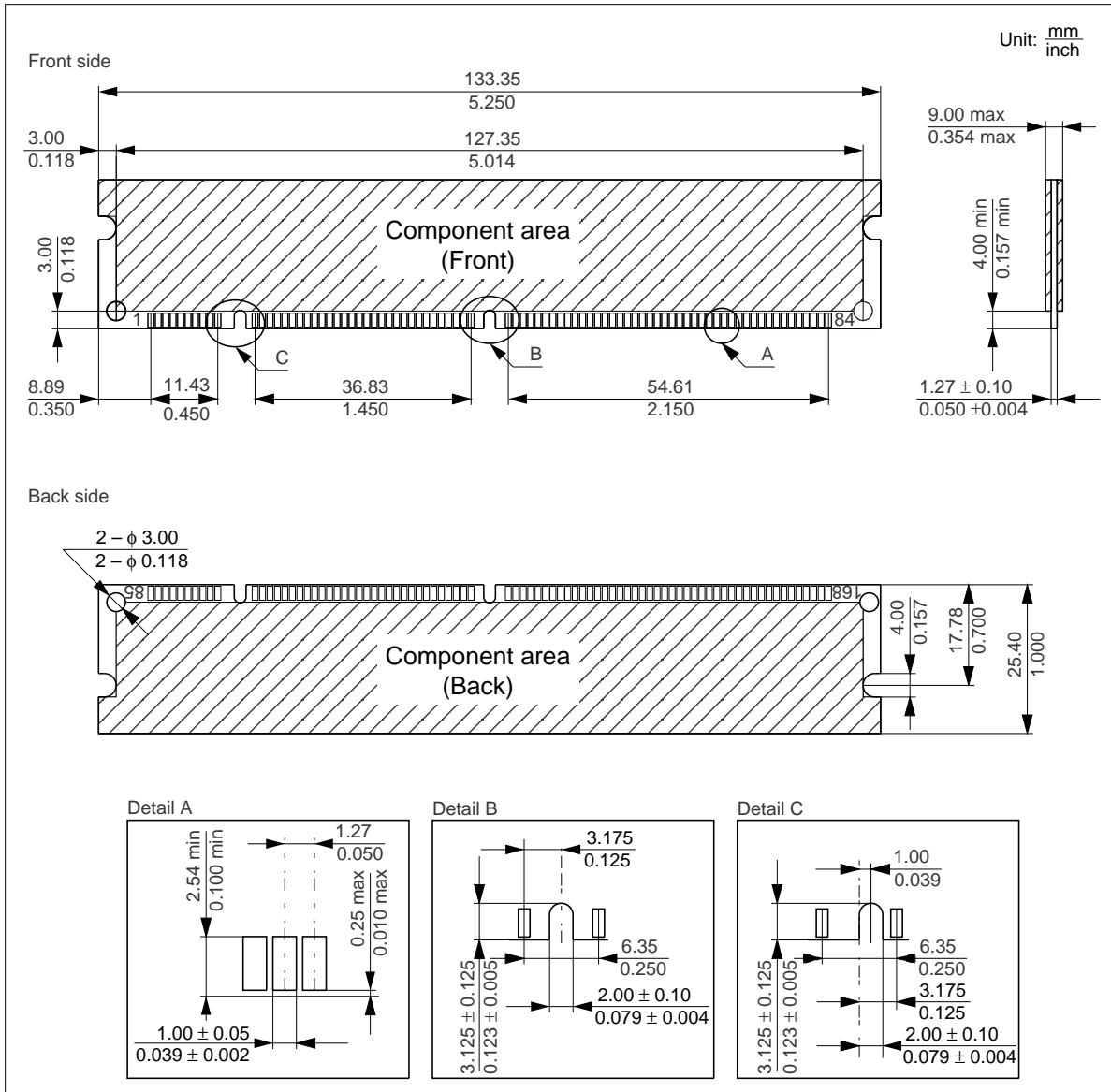




# HB56UW1673EJN-5/6, HB56UW1665EJN-5/6

## Physical Outline

HB56UW1673EJN Series,  
HB56UW1665EJN Series



## Cautions

1. Hitachi neither warrants nor grants licenses of any rights of Hitachi's or any third party's patent, copyright, trademark, or other intellectual property rights for information contained in this document. Hitachi bears no responsibility for problems that may arise with third party's rights, including intellectual property rights, in connection with use of the information contained in this document.
2. Products and product specifications may be subject to change without notice. Confirm that you have received the latest product standards or specifications before final design, purchase or use.
3. Hitachi makes every attempt to ensure that its products are of high quality and reliability. However, contact Hitachi's sales office before using the product in an application that demands especially high quality and reliability or where its failure or malfunction may directly threaten human life or cause risk of bodily injury, such as aerospace, aeronautics, nuclear power, combustion control, transportation, traffic, safety equipment or medical equipment for life support.
4. Design your application so that the product is used within the ranges guaranteed by Hitachi particularly for maximum rating, operating supply voltage range, heat radiation characteristics, installation conditions and other characteristics. Hitachi bears no responsibility for failure or damage when used beyond the guaranteed ranges. Even within the guaranteed ranges, consider normally foreseeable failure rates or failure modes in semiconductor devices and employ systemic measures such as fail-safes, so that the equipment incorporating Hitachi product does not cause bodily injury, fire or other consequential damage due to operation of the Hitachi product.
5. This product is not designed to be radiation resistant.
6. No one is permitted to reproduce or duplicate, in any form, the whole or part of this document without written approval from Hitachi.
7. Contact Hitachi's sales office for any questions regarding this document or Hitachi semiconductor products.

---

---

# HITACHI

## Hitachi, Ltd.

Semiconductor & IC Div.  
Nippon Bldg., 2-6-2, Ohte-machi, Chiyoda-ku, Tokyo 100-0004, Japan  
Tel: Tokyo (03) 3270-2111  
Fax: (03) 3270-5109

### For further information write to:

Hitachi Semiconductor  
(America) Inc.  
2000 Sierra Point Parkway  
Brisbane, CA. 94005-1897  
U S A  
Tel: 800-285-1601  
Fax: 303-297-0447

Hitachi Europe GmbH  
Continental Europe  
Dornacher Straße 3  
D-85622 Feldkirchen  
München  
Tel: 089-9 91 80-0  
Fax: 089-9 29 30-00

Hitachi Europe Ltd.  
Electronic Components Div.  
Northern Europe Headquarters  
Whitebrook Park  
Lower Cookham Road  
Maidenhead  
Berkshire SL6 8YA  
United Kingdom  
Tel: 01628-585000  
Fax: 01628-585160

Hitachi Asia Pte. Ltd.  
16 Collyer Quay #20-00  
Hitachi Tower  
Singapore 049318  
Tel: 535-2100  
Fax: 535-1533

Hitachi Asia (Hong Kong) Ltd.  
Unit 706, North Tower,  
World Finance Centre,  
Harbour City, Canton Road  
Tsim Sha Tsui, Kowloon  
Hong Kong  
Tel: 27359218  
Fax: 27306071

Copyright © Hitachi, Ltd., 1998. All rights reserved. Printed in Japan.

---

## **HB56UW1673EJN-5/6, HB56UW1665EJN-5/6**

---

### **Revision Record**

<b>Rev.</b>	<b>Date</b>	<b>Contents of Modification</b>	<b>Drawn by</b>	<b>Approved by</b>
0.0	Nov. 11, 1997	Initial issue (referred to HM5164405/HM5165405 Series Rev. 0.0)	Y. Saitou	K. Tsuneda
1.0	May. 22, 1998	Deletion of Preliminary (referred to HM5164405/HM5165405 Series Rev. 1.0)		

---