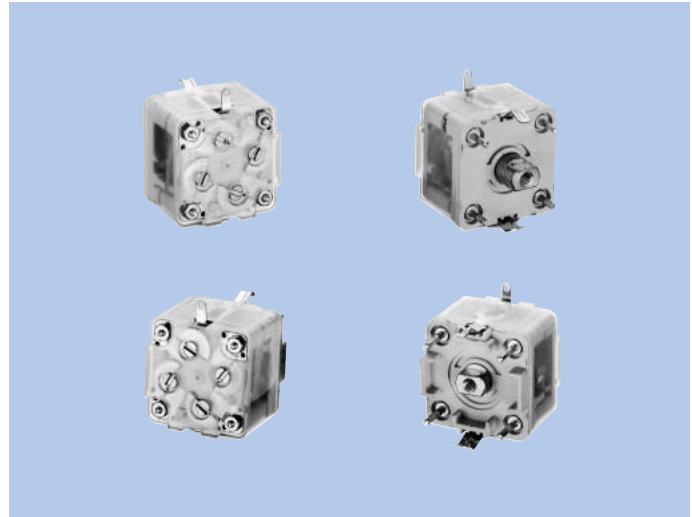


Trackingless Type, For AM/FM 2-Band, AM Wide-Band 20[□] mm, PVC-2LHT-L5, -2LHT-LD5

FEATURES

It is a trackingless POLYVARICON for exclusive MW use. It is wide-band use as the standard 20[□] mm product. It is suitable for use in practical radios, since it is a model that has pursued high cost-performance ratio.



SPECIFICATIONS

| Models | Uses | Mounting Form | Dimensions (mm) | Shaft Dimensions (mm) | No. of Stage | max. Capacitance Swing (pF) | min. Capacitance (pF) | Variable Coefficient Curve |
|----------|----------------|----------------|-----------------|-----------------------|--------------|-----------------------------|--|----------------------------|
| 2LHT-L5 | AM/FM (2-band) | Front mounting | 21×21×16.5 | 4-2 | AM-2 | (O) 82 | 3.8±1 | D |
| | | | | | FM-2 | (A) 160 | 3.4±1 | A |
| 2LHT-LD5 | AM/FM (2-band) | Dip soldering | 21×21×19.5 | (3.5) -3 | AM-2 | (O) 82 | 3.8±1 | D |
| | | | | | FM-2 | 20 (40) | FC ₁ 3.3±1 FC ₂ 3.8±1 | B |

CHARACTERISTICS

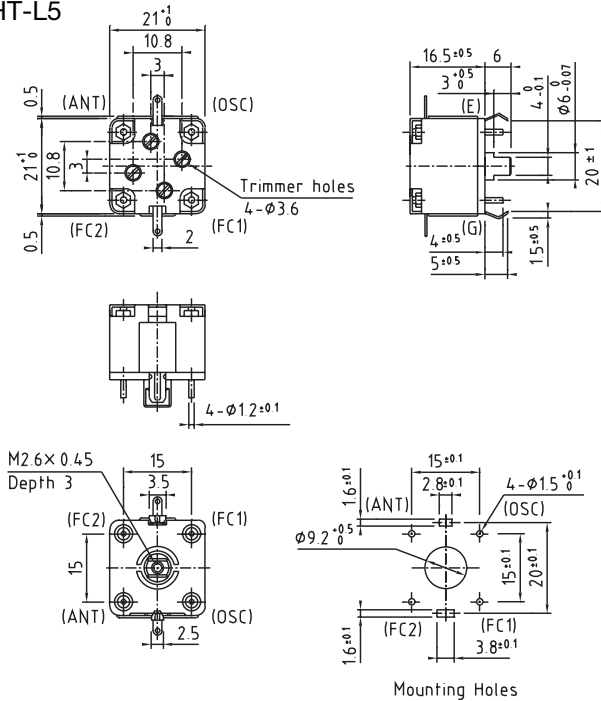
| Item | | Models | PVC-2LHT-L5/2LHT-LD5 |
|----------------------------|-----------------------------------|-------------|---|
| Mechanical Characteristics | Shaft Rotational Direction | | Capacitance decreases as shaft turned clockwise. |
| | Full Rotational Angle | | 97 ⁺² ₋₁ % (With semi-sphere 180° as 100%.) |
| | Rotational Torque | | 70~350g·cm |
| | Torque Difference | | 150g·cm or less |
| | Stopper Strength | | 9kg·cm (Breakdown strength) |
| | Trimmer Rotational Torque | | 50~400g·cm |
| Electrical Characteristics | Tolerance of Variable Capacitance | AM | ± (1pF+1.5%) |
| | | FM | ± (0.3pF+2%) |
| | Q | AM | 500 or more |
| | | FM | 200 or more |
| | Trimmer Capacitance | | 7pF or more |
| MW Tuning Frequency Range | | 520~1650kHz | |

Nominal Variable Coefficient Capacitance

| Rotational Index | % | 100 | 90 | 82.9 | 75 | 70 | 62.6 | 50 | 43.6 | 30 | 25 | 20.3 | 10 | (3) | Variable Coefficient Curve |
|---------------------------|----|-------|-------|-------|-------|-------|------|------|------|------|------|------|------|-----|----------------------------|
| Variable Capacitance (pF) | AM | 82.0 | 74.0 | 67.2 | 59.1 | 53.7 | 45.5 | 32.1 | 25.9 | 14.6 | 11.2 | 8.23 | 2.77 | 0 | D |
| | FM | 160.0 | 135.0 | 116.3 | 96.0 | 83.7 | 66.4 | 41.9 | 32.0 | 16.3 | 12.1 | 8.70 | 2.78 | 0 | A |
| | FM | 20.00 | 17.24 | — | 13.46 | 12.30 | — | 8.02 | — | 4.3 | 3.45 | — | 1.05 | 0 | B |

DIMENSIONS

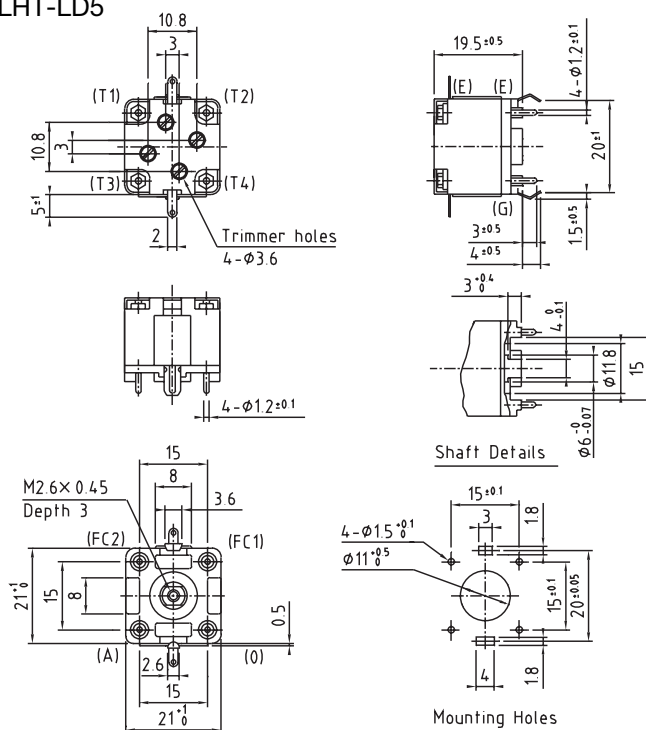
PVC-2LHT-L5



- ☆ Flats of shaft located as shown max. capacitance.
- ☆ Tolerance of shaft flat angle : Within ±2°.
- ☆ Oscillator stage : AM (OSC).

Unit : mm, Tolerance : ±0.2

PVC-2LHT-LD5



- ☆ Flats of shaft located as shown max. capacitance.
- ☆ Tolerance of shaft flat angle : Within ±2°.
- ☆ Oscillator stage : AM (OSC).

Unit : mm, Tolerance : ±0.2