

N Style Coaxial Connector

N Series

DDK Ltd.



Characteristic Impedance

50 Ω

Frequency Range

DC to 3GHz

Lock Type

Screw

FEATURE

- N series is a thread coupling coaxial connector which is the most popular as a 7mm type 50 Ω impedance.
- N series is available for various cable type.
- It is incompatible to NC series(75 Ω impedance N Style connector).

CONFORMING STANDARD

JIS-C5411, MIL-PRF-39012

SPECIFICATIONS

Characteristic Impedance	50 Ω
Dielectric Withstanding Voltage	1,500V AC(r.m.s) / 1 minute
Insulation Resistance	1,000M Ω min. at 500V DC
Contact Resistance	3m Ω max.
V.S.W.R.	1.3 max. (DC ~ 3GHz)

* The specifications are typical but may not apply to all connectors.
Please check the specifications on each item with its drawing from us when you use.
Also, the performance is different by using cable.

MATERIAL/FINISH

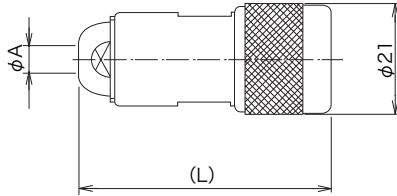


Item	Material / Finish
Shell	Copper Alloy / Ni or Ag Plating
Contact (Female)	Copper Alloy / Ag or Au Plating
Contact (Male)	Copper Alloy / Ag or Au Plating
Insulator	PTFE
Gasket	Silicon Rubber

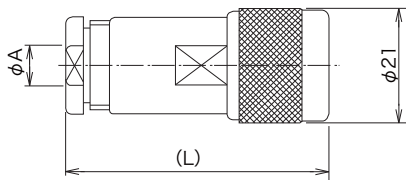
© Please acknowledge that the specification etc. of this catalog might change by the improvement etc. without notice.
Moreover, the characteristic and the specification of the published product are the reference values.
Please confirm the content with the latest delivery specifications when you use the product.

▶ Straight Cable Plug

Clamp Type



Part Number	Applicable Cable	φ A	(L)	Finish		Assembly Instruction
				Outer Conductor	Center Conductor	
N-P-3-CF	3C-2V	6.2	44.6	Ag	Ag	1
	3D-2V					
N-P-3-Ni-CF	3C-2V	6.2	44.6	Ni	Ag	1
	3D-2V					
N-P-3-NiCAu-CF	3C-2V	6.2	44.6	Ni	Au	1
	3D-2V					
N-P-3W-CF	3C-2W	7.2	44.6	Ag	Ag	1
	3D-2W					
N-P-3W-Ni-CF	3C-2W	7.2	44.6	Ni	Ag	1
	3D-2W					
N-P-3W-D1-CF	3C-2W	7.2	44.6	Ni	Au	1
	3D-2W					
N-P-55U-CF	RG-55/U	5.4	44.6	Ag	Ag	1
N-P-55U-Ni-CF	RG-55/U	5.4	44.6	Ni	Ag	1
N-P-58U-CF	RG-58/U	5.4	44.6	Ag	Ag	1
N-P-58U-Ni-1-CF	RG-58/U	5.4	44.6	Ni	Ag	1
N-P-58U-NiCAu-CF	RG-58/U	5.4	44.6	Ni	Au	1



Part Number	Applicable Cable	φ A	(L)	Finish		Assembly Instruction
				Outer Conductor	Center Conductor	
N-SP-3.5DFE-CF	3.5D-FE	6.2	41.5	Ni	Au	—
	3.5D-QEFA					
N-P-5-CF	5C-2V	8.6	44.0	Ag	Ag	1
	5D-2V					
N-P-5-Ni-CF	5C-2V	8.6	44.0	Ni	Ag	1
	5D-2V					
N-P-5W-CF	5C-2W	9.1	45.0	Ag	Ag	1
	5D-2W					
N-P-5W-Ni-CF	5C-2W	9.1	45.0	Ni	Ag	1
	5D-2W					
N-P-5W-NiCAu-CF	5C-2W	9.1	45.0	Ni	Au	1
	5D-2W					
N-P-5DFB-1-CF	5D-FB	8.1	44.0	Ni	Ag	1
N-SP-5DSFA-CF	5D-SFA	8.6	41.5	Ni	Au	—
N-P-8U-CF	RG-8/U	11.2	44.0	Ag	Ag	1
	RG-9/U					
N-P-8U-Ni-CF	RG-8/U	11.2	44.0	Ni	Ag	1
	RG-9/U					
UG-21D/U-CF	RG-8/U	11.25	38.0	Ag	Ag	2
	RG-9/U					

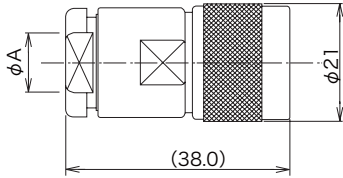
© Please acknowledge that the specification etc. of this catalog might change by the improvement etc. without notice.

Moreover, the characteristic and the specification of the published product are the reference values.

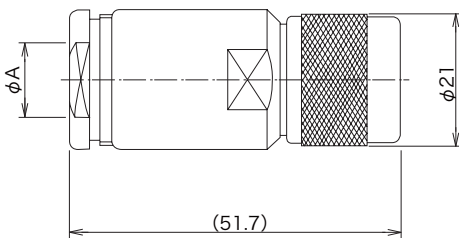
Please confirm the content with the latest delivery specifications when you use the product.

▶ Straight Plug

Clamp Type

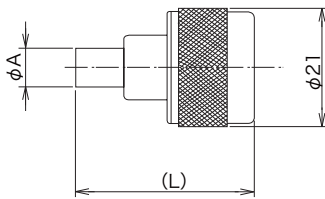


Part Number	Applicable Cable	φ A	Finish		Assembly Instruction
			Outer Conductor	Center Conductor	
N-P-8-1-CF	8D-2V	12.6	Ag	Ag	4
N-P-8-1-Ni-CF	8D-2V	12.6	Ni	Ag	4
N-P-8DFB-1-CF	8D-FB	11.8	Ni	Ag	—



Part Number	Applicable Cable	φ A	Finish		Assembly Instruction
			Outer Conductor	Center Conductor	
N-P-10-CF	10C-2V	14.2	Ag	Ag	4
	10D-2V				
N-P-Ni-CF	10C-2V	14.2	Ni	Ag	4
	10D2V				
N-P-10DFB-1-CF	10D-FB	14.2	Ni	Ag	4

Crimp Type



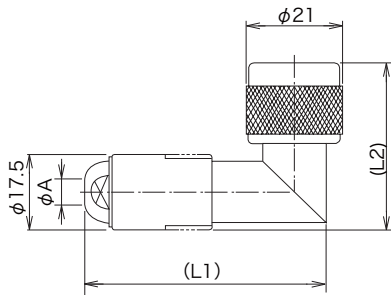
Above drawing is N-P-5D2V-CR20-CF.

Part Number	Applicable Cable	φ A	(L)	Finish		Assembly Instruction	Crimp Tool
				Outer Conductor	Center Conductor		
N-P-3D2V-CR20-CF	3D-2V	7.1	35.0	Ni	Ag	6	CR-H-1152
	3D-LFV						
N-P-5D2V-CR20-CF	5D-2V	9.5	37.2	Ni	Ag	7	CR-H-1130

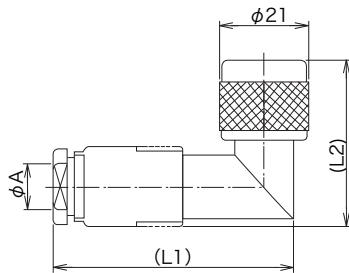
© Please acknowledge that the specification etc. of this catalog might change by the improvement etc. without notice.
 Moreover, the characteristic and the specification of the published product are the reference values.
 Please confirm the content with the latest delivery specifications when you use the product.

▶ Right Angle Cable Plug

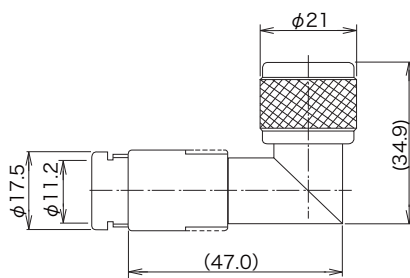
Clamp Type



Part Number	Applicable Cable	φ A	(L1)	(L2)	Finish		Assembly Instruction
					Outer Conductor	Center Conductor	
N-LP-58U-CF	RG-58/U	5.4	52.9	36.6	Ag	Ag	—
N-LP-58U-Ni-CF	RG-58/U	5.4	52.9	36.6	Ni	Ag	—



Part Number	Applicable Cable	φ A	(L1)	(L2)	Finish		Assembly Instruction
					Outer Conductor	Center Conductor	
N-LP-5-CF	5D-2V	8.6	53.0	36.6	Ag	Ag	—
N-LP-5-Ni-CF	5D-2V	8.6	53.0	36.6	Ni	Ag	—

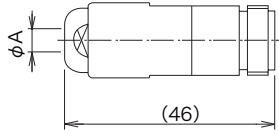


Part Number	Applicable Cable	Finish		Assembly Instruction
		Outer Conductor	Center Conductor	
N-LP-8U-CF	RG-8U	Ag	Ag	—
	RG-9/U			
N-LP-8U-Ni-CF	RG-8U	Ni	Ag	—
	RG-9/U			

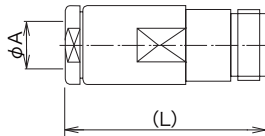
© Please acknowledge that the specification etc. of this catalog might change by the improvement etc. without notice.
 Moreover, the characteristic and the specification of the published product are the reference values.
 Please confirm the content with the latest delivery specifications when you use the product.

▶ Straight Cable Jack

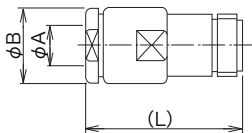
Clamp Type



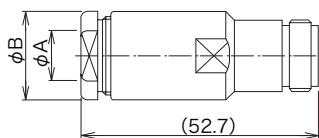
Part Number	Applicable Cable	φ A	Finish		Assembly Instruction
			Outer Conductor	Center Conductor	
N-J-3-CF	3C-2V	6.2	Ag	Ag	2
	3D-2V				
N-J-3-Ni-CF	3C-2V	6.2	Ni	Ag	2
	3D-2V				
N-J-58U-CF	RG-58/U	5.4	Ag	Ag	2
N-J-58U-Ni-CF	RG-58/U	5.4	Ni	Ag	2



Part Number	Applicable Cable	φ A	(L)	Finish		Assembly Instruction
				Outer Conductor	Center Conductor	
N-J-5-CF	5D-2V	8.6	47.0	Ag	Ag	2
N-J-5-Ni-CF	5D-2V	8.6	47.0	Ni	Ag	2
N-J-8U-CF	RG-8/U	11.2	47.0	Ag	Ag	2
	RG-9/U					
N-J-8U-Ni-CF	RG-8/U	11.2	47.0	Ni	Ag	2
	RG-9/U					



Part Number	Applicable Cable	φ A	φ B	(L)	Finish		Assembly Instruction
					Outer Conductor	Center Conductor	
N-J-8-1-CF	8D-2V	12.7	19.1	41.2	Ag	Ag	5
N-J-8-1-Ni-CF	8D-2V	12.7	19.1	41.2	Ni	Ag	5
UG-23D/U-CF	RG-8/U	11.2	19.0	40.0	Ag	Ag	5
	RG-9/U						



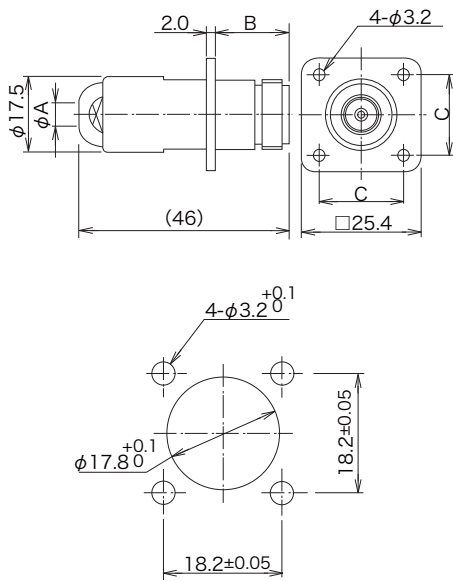
Part Number	Applicable Cable	φ A	φ B	Finish		Assembly Instruction
				Outer Conductor	Center Conductor	
N-J-10-CF	10C-2V	14.2	22.2	Ag	Ag	5
	10D-2V					
N-J-10-Ni-CF	10C-2V	14.2	22.2	Ni	Ag	5
	10D-2V					
N-J-10DFB-1-CF	10D-FB	14.2	22.2	Ni	Ag	5

© Please acknowledge that the specification etc. of this catalog might change by the improvement etc. without notice.

Moreover, the characteristic and the specification of the published product are the reference values.

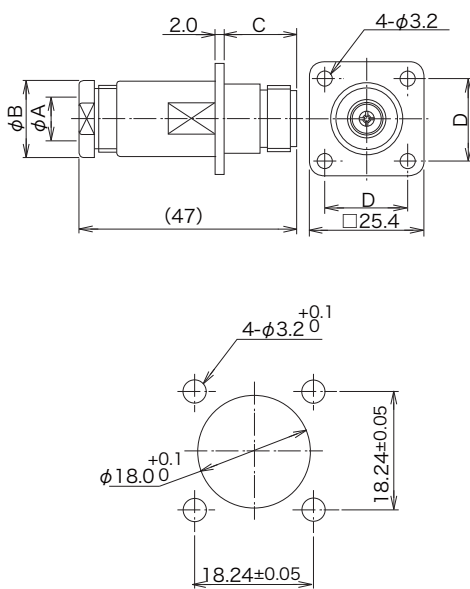
Please confirm the content with the latest delivery specifications when you use the product.

▶ Straight Panel Cable Jack



Panel Mounting Dimensions

Part Number	Applicable Cable	φ A	B	C	Finish		Assembly Instruction
					Outer Conductor	Center Conductor	
N-PJ-3-CF	3C-2V	6.2	16.7	18.2	Ag	Ag	3
	3D-2V						
N-PJ-3-Ni-CF	3C-2V	6.2	16.7	18.2	Ni	Ag	3
	3D-2V						
N-PJ-55U-CF	RG-55/U	5.4	16.6	18.2	Ag	Ag	3
N-PJ-55U-Ni-CF	RG-55/U	5.4	16.6	18.2	Ni	Ag	3
N-PJ-58U-CF	RG-58/U	5.4	16.6	18.2	Ag	Ag	3
N-PJ-58U-Ni-CF	RG-58/U	5.4	16.6	18.2	Ni	Ag	3



Panel Mounting Dimensions

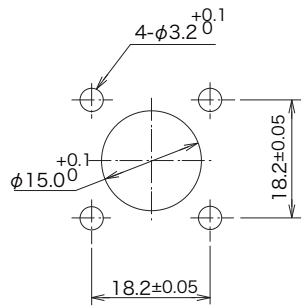
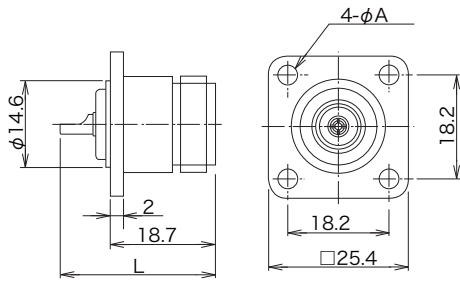
Part Number	Applicable Cable	φ A	B	C	D	Finish		Assembly Instruction
						Outer Conductor	Center Conductor	
N-PJ-5-CF	5C-2V	8.6	17.5	16.7	18.24	Ag	Ag	3
	5D-2V							
N-PJ-5-Ni-CF	5D-2V	8.6	17.5	16.7	18.24	Ni	Ag	3

© Please acknowledge that the specification etc. of this catalog might change by the improvement etc. without notice.

Moreover, the characteristic and the specification of the published product are the reference values.

Please confirm the content with the latest delivery specifications when you use the product.

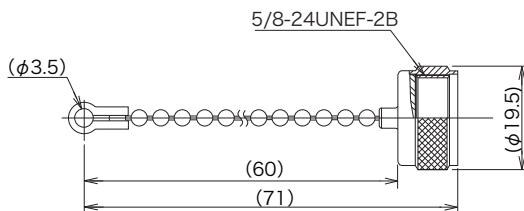
▶ Receptacle Jack



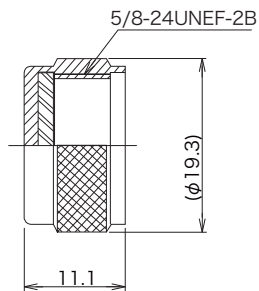
Panel Mounting Dimensions

Part Number	L	Finish		φ A
		Outer Conductor	Center Conductor	
N-R-CF	29	Ag	Ag	φ 3.2
N-R-Ni-CF	29	Ni	Ag	φ 3.2
N-R-NiAu-CF	29	Ni	Au	φ 3.2
UG-58A/U-CF	29	Ag	Ag	φ 3.2

▶ Dust Cap



Part Number	Finish
N-RC-5	Ni
N-RC-5-D1	Ag

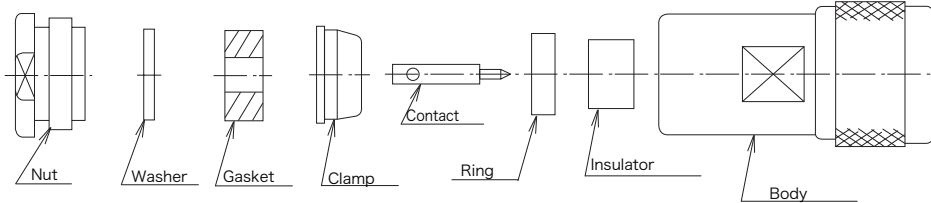


Part Number	Finish
N-RC-3-CF	Ni

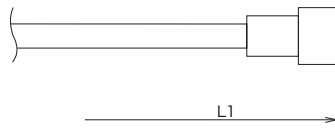
© Please acknowledge that the specification etc. of this catalog might change by the improvement etc. without notice.
 Moreover, the characteristic and the specification of the published product are the reference values.
 Please confirm the content with the latest delivery specifications when you use the product.

▶ Assembly Instruction(1) Straight Cable Plug

Parts Configuration

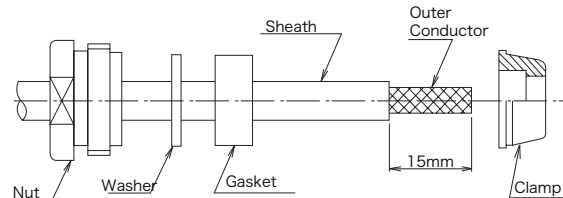


①



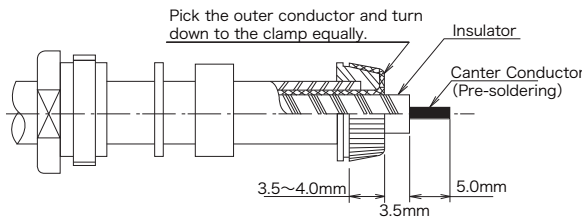
① L=The Cable length require for the single-ended cable assembly.
L=L1-10

②



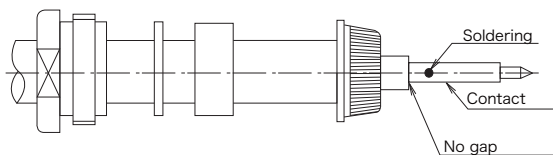
② Insert the nut, washer and gasket into the cable. Cut the sheath 15mm from the end of the cable and insert the clamp. Please be careful to not damage the outer conductor.

③



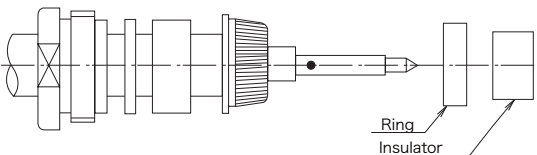
③ Pick the outer conductor and turn down to the clamp. Cut the outer conductor along the clamp. Cut the insulator and center conductor as fig.3. Please be careful to not damage the center conductor.

④



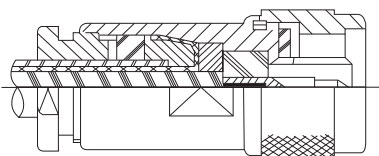
④ Solder up the contact with the center conductor. Please be careful to not deform the insulator by heat. When the solder is stick out, please shave the extra solder. No gap between contact and insulator of the cable.

⑤



⑤ Insert the ring and insulator as fig. 5.

⑥

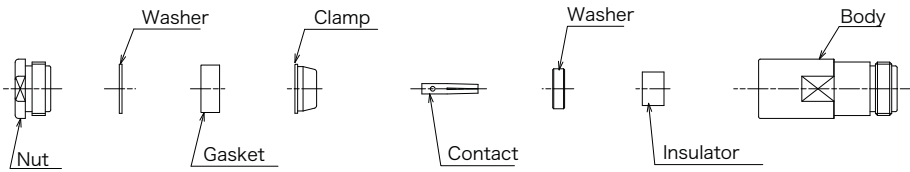


⑥ Insert the above assembly into the body and screw up by wrench.

© Please acknowledge that the specification etc. of this catalog might change by the improvement etc. without notice. Moreover, the characteristic and the specification of the published product are the reference values. Please confirm the content with the latest delivery specifications when you use the product.

▶ Assembly Instruction(2) Straight Cable Jack

Parts Configuration



① L = The Cable length require for the single-ended cable assembly.
 $L = L1 - 12$

② Insert the nut, washer and gasket into the cable.
 Cut the sheath 15mm from the end of the cable and insert the clamp.
 Please be careful to not damage the outer conductor .

③ Pick the outer conductor and turn down to the clamp. Cut the outer conductor along the clamp.
 Cut the insulator and center conductor as fig.3.
 Please be careful to not damage the center conductor.

④ Solder up the contact with the center conductor.
 Please be careful to not deform the insulator by heat.
 When the solder is stick out, please shave the extra solder.
 No gap between contact and insulator of the cable.

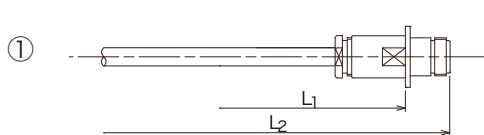
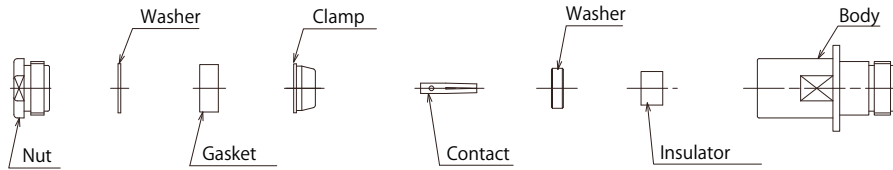
⑤ Insert the washer and insulator as fig.5.

⑥ Insert the above assembly into the body and screw up by wrench.

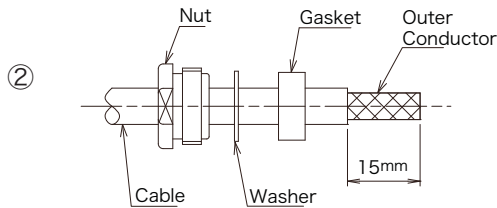
© Please acknowledge that the specification etc. of this catalog might change by the improvement etc. without notice.
 Moreover, the characteristic and the specification of the published product are the reference values.
 Please confirm the content with the latest delivery specifications when you use the product.

▶ Assembly Instruction(3) Straight Panel Jack

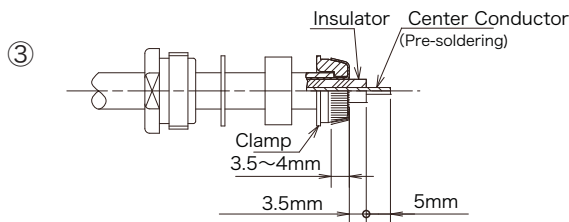
Parts Configuration



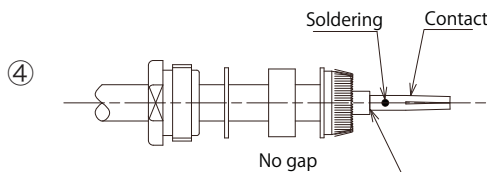
- ① L=The Cable length require for the single-ended cable assembly.
 $L=L_1-6.7$
 $L=L_2-1.2$



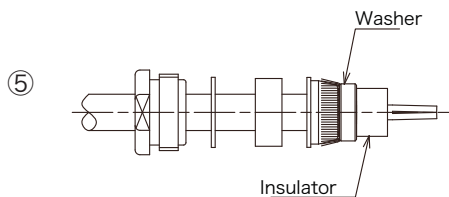
- ② Insert the nut, washer and gasket into the cable. Cut the sheath 15mm from the end of the cable and insert the clamp. Please be careful to not damage the outer conductor.



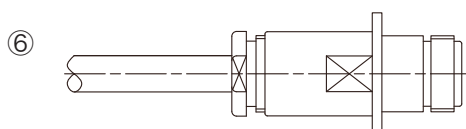
- ③ Pick the outer conductor and turn down to the clamp. Cut the outer conductor along the clamp. Cut the insulator and center conductor as fig.3. Please be careful to not damage the center conductor.



- ④ Solder up the contact with the center conductor. Please be careful to not deform the insulator by heat. When the solder is stick out, please shave the extra solder. No gap between contact and insulator of the cable.



- ⑤ Insert the washer and insulator as fig. 5.

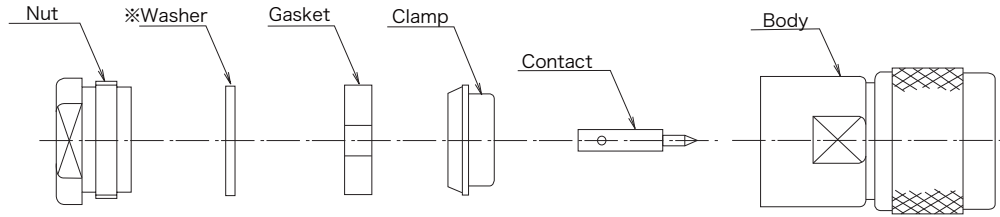


- ⑥ Insert the above assembly into the body and screw up by wrench.

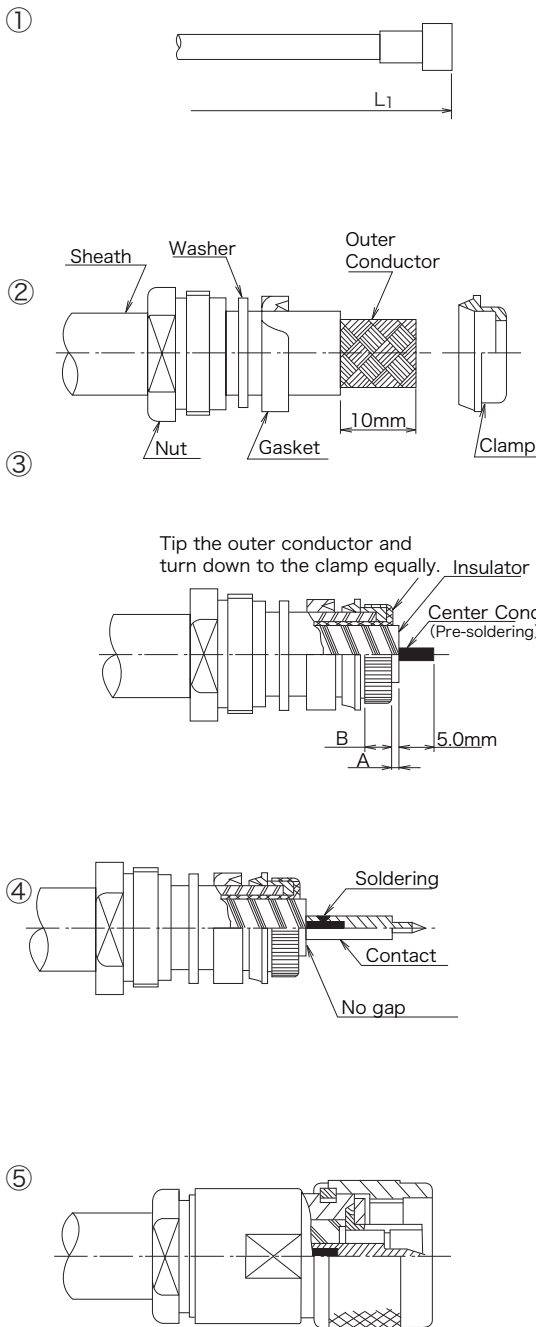
© Please acknowledge that the specification etc. of this catalog might change by the improvement etc. without notice. Moreover, the characteristic and the specification of the published product are the reference values. Please confirm the content with the latest delivery specifications when you use the product.

▶ Assembly Instruction(4) MIL Clamp Straigh Cable Plug

Parts Configuration



※ As for N-P-8-1-CF, N-P-8-1-Ni-CF and UG-21D/U-CF, washer is not attached. The washer is not inserted into the cable.



① The cable length require for the single-ended cable assembly as following table.

Part Number	L(mm)
N-P-8-1-CF	L ₁ -11.4
N-P-8-1-Ni-CF	
UG-21D/U-CF	
N-P-10-CF	L ₁ -21.5
N-P-10-Ni-CF	
N-P-10DFB-1-CF	

② Insert the nut, washer and gasket into the cable. Cut the sheath 10mm from the end of the cable and insert the clamp. Please be careful to not damage the outer conductor.

③ Pick the outer conductor and turn down to the clamp. Cut the outer conductor along the clamp. Cut the insulator and center conductor as fig.3. Please be careful to not damage the center conductor.

Part Number	A(mm)	B(mm)
N-P-8-1-CF N-P-8-1-Ni-CF UG-21D/U-CF	1.0	3.5 ~ 4.0
N-P-10-CF N-P-10-Ni-CF N-P-10DFB-1-CF	1.8	4.0 ~ 4.5

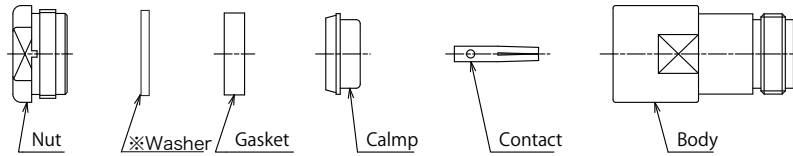
④ Solder up the contact with the center conductor. Please be careful to not deform the insulator by heat. When the solder is stick out, please shave the extra solder. No gap between contact and insulator of the cable.

⑤ Insert the above assembly into the body and screw up by wrench.

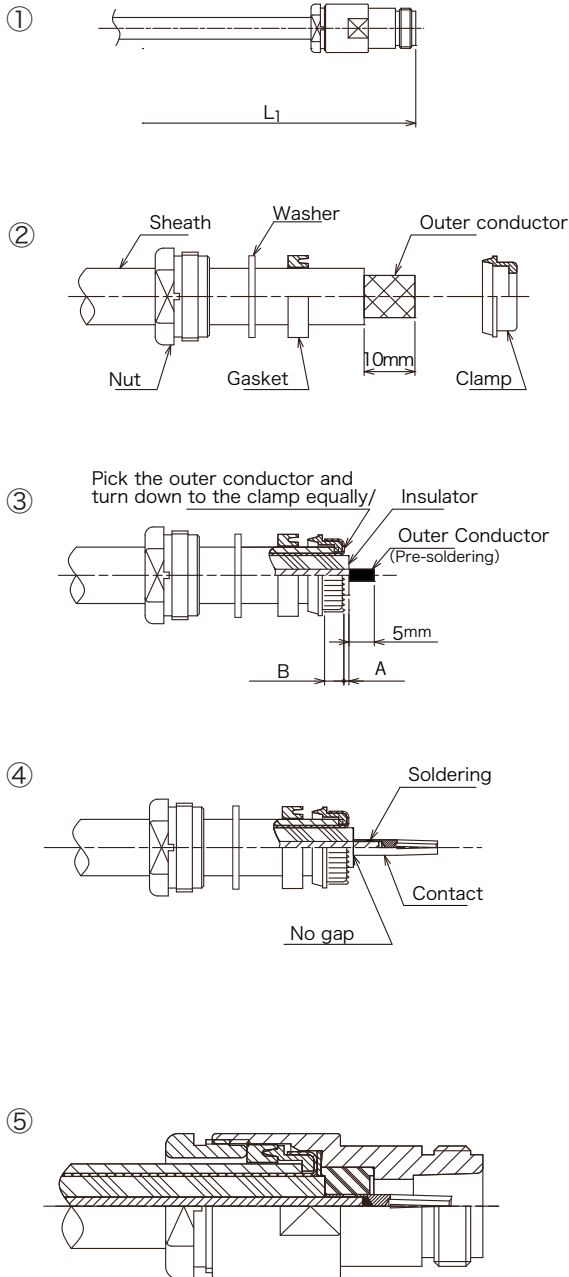
© Please acknowledge that the specification etc. of this catalog might change by the improvement etc. without notice. Moreover, the characteristic and the specification of the published product are the reference values. Please confirm the content with the latest delivery specifications when you use the product.

▶ Assembly Instruction(5) MIL Clamp Straight Cable Jack

Parts Configuration



※ As for N-J-8-1-CF, N-J-8-1-Ni-CF and UG-23D/U-CF, the washer is not attached. The washer is not inserted into the cable.



① The cable length require for the single-ended cable assembly as following table.

Part Number	L(mm)
N-J-8-1-CF	L ₁ -13.2
N-J-8-1-Ni-CF	
UG-23D/U-CF	L ₁ -13.8
N-J-10-CF	L ₁ -23.4
N-J-10-Ni-CF	
N-J-10DFB-1-CF	

② Insert the nut, washer and gasket into the cable. Cut the sheath 10mm from the end of the cable and insert the clamp. Please be careful to not damage the outer conductor.

③ Pick the outer conductor and turn down to the clamp equally. Cut the outer conductor along the clamp. Cut the insulator and center conductor as fig.3. Please be careful to not damage the center conductor.

Part Number	A(mm)	B(mm)
N-J-8-1-CF N-J-8-1-Ni-CF UG-23D/U-CF	1.0	3.5 ~ 4.0
N-J-10-CF N-J-10-Ni-CF N-J-10DFB-1-CF	1.8	4.0 ~ 4.5

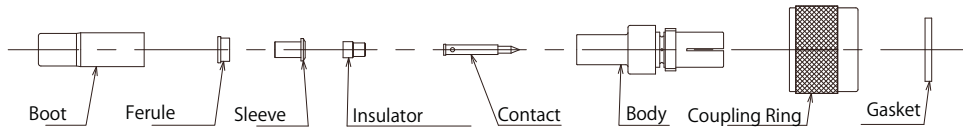
④ Solder up the contact with the center conductor. Please be careful to not deform the insulator by heat. When the solder is stick out, please shave the extra solder. No gap between contact and insulator of the cable.

⑤ Insert the above assembly into the body and screw up by wrench.

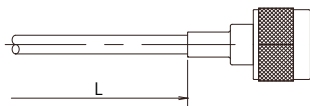
© Please acknowledge that the specification etc. of this catalog might change by the improvement etc. without notice. Moreover, the characteristic and the specification of the published product are the reference values. Please confirm the content with the latest delivery specifications when you use the product.

▶ Assembly Instruction(6) Crimp Straight Cable Plug

Parts Configuration

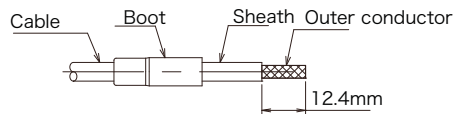


①



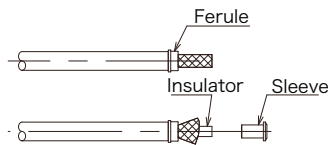
① The cable length require for the single-ended cable assembly. $L+17\text{mm}$

②



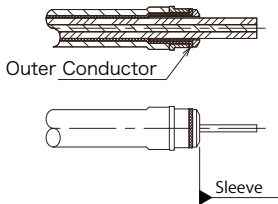
② Insert the boot into the cable. Cut the cable as fig.2. Please be careful to not damage the outer conductor.

③



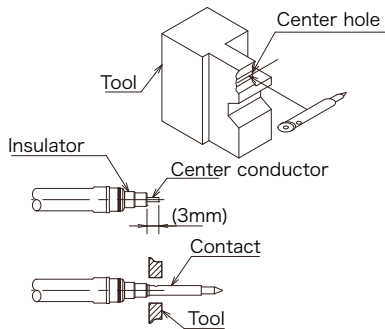
③ After Inserting the ferule, tip the outer conductor and spread the top of the outer conductor. Insert the sleeve between outer conductor and the insulator.

④



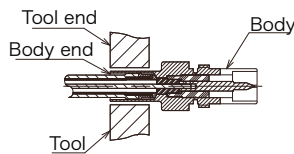
④ Cut the insulator along the sleeve. And cut the outer conductor along the sleeve.

⑤



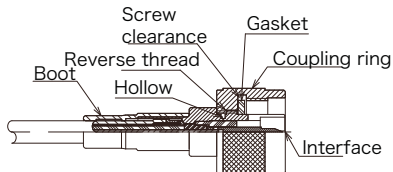
⑤ Put the contact into the center hole of the crimp tool and insert the cable assembly and crimp the contact as fig.5.
● Crimp Tool : CR-H-1152

⑥



⑥ Insert the above cable assembly into the body and crimp as fig.6. Body end is leveled to the tool end.
● Crimp Tool : CR-H-1152

⑦

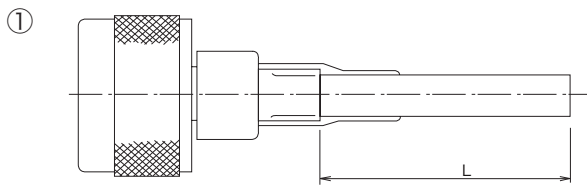
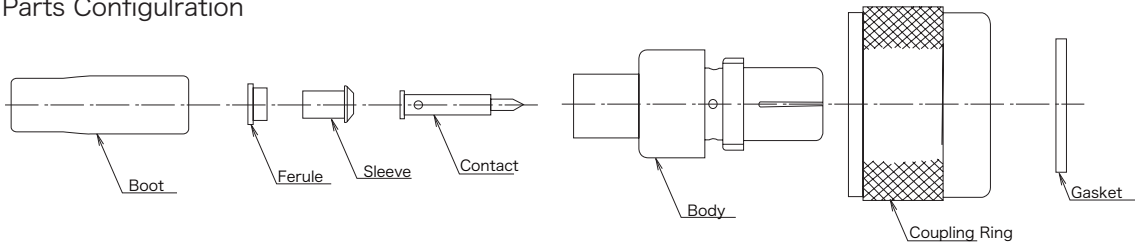


⑦ Screw up the cable assembly into the body until the reverse thread is end and reached hollow . After the coupling ring is screwed, fit the gasket into the screw clearance. Cover the boot on the root of the connector.

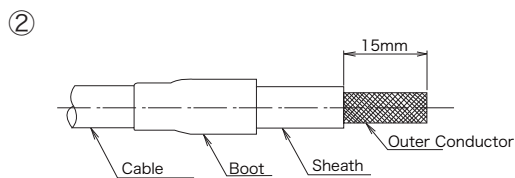
© Please acknowledge that the specification etc. of this catalog might change by the improvement etc. without notice.
Moreover, the characteristic and the specification of the published product are the reference values.
Please confirm the content with the latest delivery specifications when you use the product.

▶ Assembly Instruction(7) Crimp Straight Cable Plug

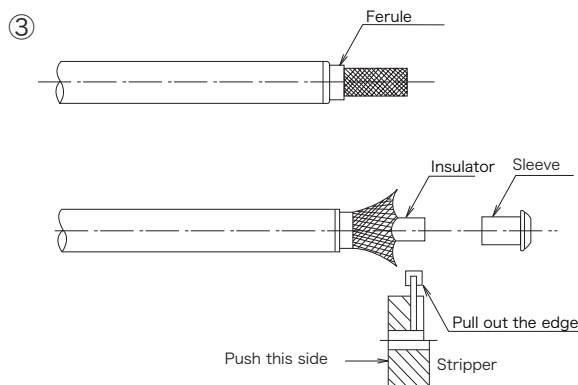
Parts Configuration



① The cable length require for the single-ended cable assembly. L+22mm

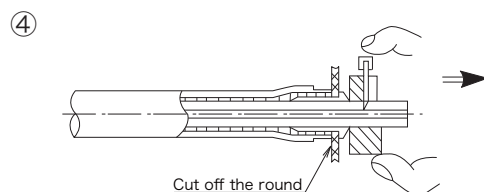


② Insert the boot into the cable. Cut the cable as fig.2. Please be careful to not damage the outer conductor.



③ After Inserting the ferule, tip the outer conductor and spread the top of the outer conductor. Insert the sleeve between outer conductor and the insulator. Plunge the sleeve by stripper without digging the edge.

● Stripper Part No. : 357J-15485

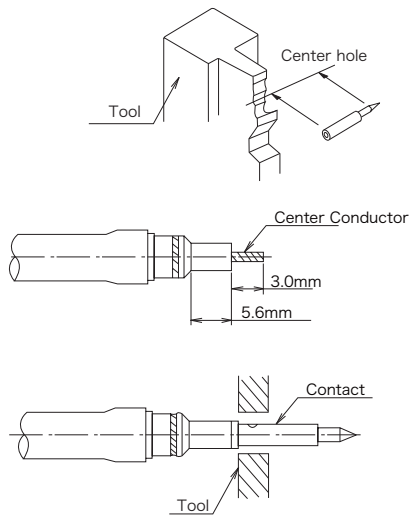


④ Cut the insulator by stripper as fig.4. Insert the stripper and dig the edge to the insulator. Rotate the stripper a few times and pull off the insulator. And cut the outer conductor along the sleeve.

© Please acknowledge that the specification etc. of this catalog might change by the improvement etc. without notice.
 Moreover, the characteristic and the specification of the published product are the reference values.
 Please confirm the content with the latest delivery specifications when you use the product.

▶ Assembly Instruction(7) Crimp Straight Cable Plug

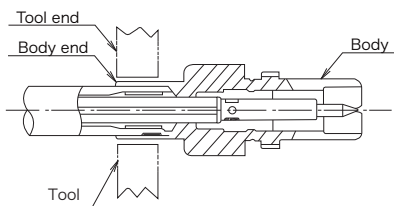
⑤



⑤ Put the contact into the center hole of the crimp tool and insert the cable assembly and crimp the contact as fig.5.

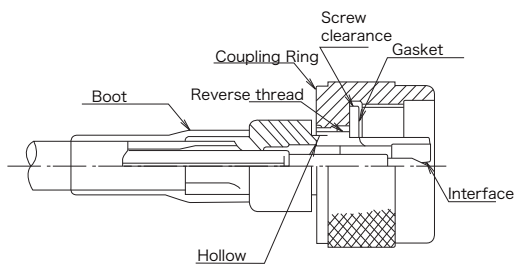
● Crimp Tool : CR-H-13970

⑥



⑥ Insert the above cable assembly into the body and crimp as fig.6. Body end is leveled to the tool end.

⑦



⑦ Screw up the cable assembly into the body until the reverse thread is end and reached hollow . After the coupling ring is screwed, fit the gasket into the screw clearance. Cover the boot on the root of the connector.

© Please acknowledge that the specification etc. of this catalog might change by the improvement etc. without notice.
 Moreover, the characteristic and the specification of the published product are the reference values.
 Please confirm the content with the latest delivery specifications when you use the product.