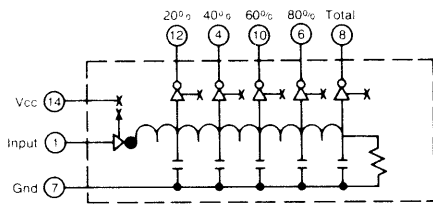
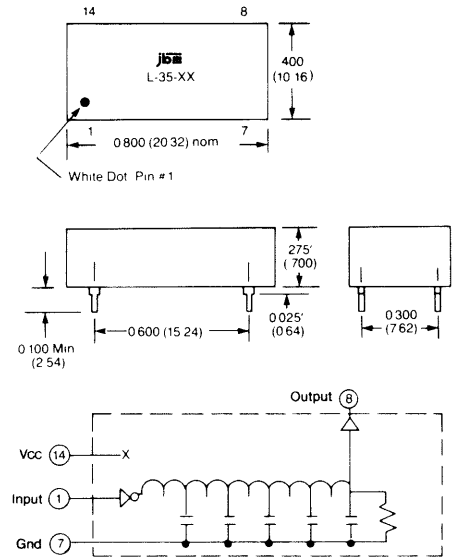
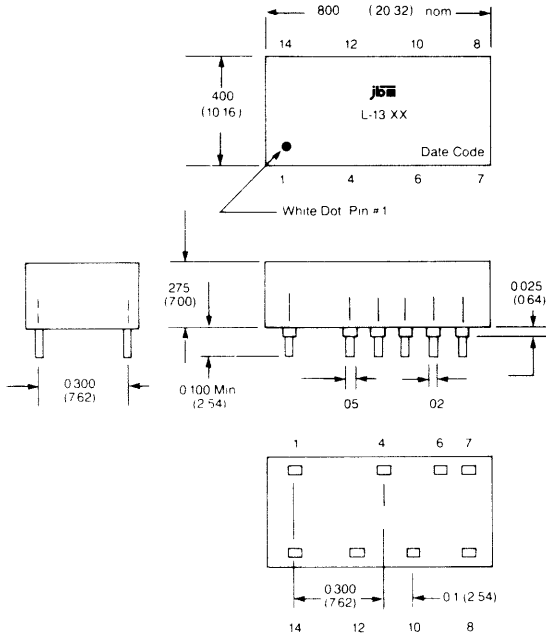


Traditional TTL Buffered Delay Lines

Delay Range 25 thru 1000 nsec
STYLE L-13 (14-pin outline)
 5 equally-spaced taps

Delay Range 5 thru 1000 nsec
STYLE L-35 (14-pin outline)
 Untapped



INPUT CONDITIONS (See Page 2)

Operating Temp 0°C to +70°C
 Storage Temp -55°C to +125°C
 (All lines internally terminated)

I_{IH} Logic '1' Input Current 50 μ A Max
 I_{IL} Logic '0' Input Current -2mA Max
 V_{OH} Logic '1' Voltage Out 2.7V Min
 V_{OL} Logic '0' Voltage Out 0.5V Max

DRIVE CAPABILITIES (TTL LOADS)

Logic '0' 10 Loads/Tap Max
 20 Loads/Unit Max

Logic '1' 20 Loads/Unit Max

Voltage Range 4.75V to 5.25V
 Supply Current 75mA Max

TOTAL DELAY (nsec \pm 5%)	TAP INTERVALS (nsec*)	RISE TIME (ns MAX) (0.8 to 2.0V)	JBM P/N L-13-XXX
25	5 \pm 3ns	2.0	L-13-50
30	6 \pm 3ns	2.0	L-13-51
35	7 \pm 3ns	2.0	L-13-52
40	8 \pm 3ns	2.0	L-13-53
45	9 \pm 3ns	2.0	L-13-54
50	10 \pm 3ns	2.0	L-13-55
75	15 \pm 3ns	2.0	L-13-56
100	20 \pm 3ns	2.0	L-13-57
150	30 \pm 3ns	2.5	L-13-58
200	40 \pm 3ns	3.0	L-13-59
250	50 \pm 3ns	3.0	L-13-60
300	60 \pm 5%	3.5	L-13-250
350	70 \pm 5%	3.5	L-13-251
400	80 \pm 5%	4.0	L-13-252
450	90 \pm 5%	4.0	L-13-253
500	100 \pm 5%	4.0	L-13-254
600	120 \pm 5%	4.5	L-13-255
700	140 \pm 5%	4.5	L-13-256
750	150 \pm 5%	4.5	L-13-257
800	160 \pm 5%	5.0	L-13-258
900	180 \pm 5%	5.0	L-13-259
1000	200 \pm 5%	5.0	L-13-260

TOTAL DELAY (nsec)	RISE TIME (ns MAX) (.8 to 2.0V)	JBM P/N L-35-XX
5 \pm 1ns	2.0	L-35-00
7 \uparrow	\uparrow	L-35-01
10		L-35-02
15		L-35-03
20 \pm 1ns		L-35-04
25 \pm 5%		L-35-05
30 \uparrow		L-35-06
40		L-35-07
50		L-35-08
70		L-35-09
100	\downarrow	L-35-10
150	2.0	L-35-11
200	3.0	L-35-12
300	3.5	L-35-13
400	4.0	L-35-14
500	4.0	L-35-15
600	4.5	L-35-25
700	4.5	L-35-26
750	4.5	L-35-27
800	5.0	L-35-28
900 \downarrow	5.0	L-35-29
1000 \pm 5%	5.0	L-35-30

* 25n - 250ns TAP/TAP 300ns - 1000ns cumulative @ 25°C, 5.00VDC

Delays may change 2% or 1ns for a respective 5% increase or decrease in supply voltage
 Consult factory for other delays, tolerances, and logic families