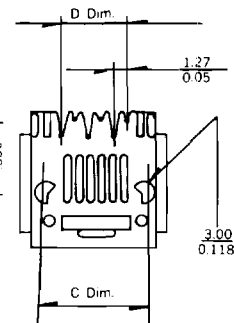
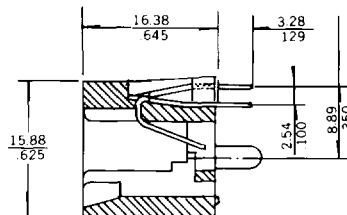
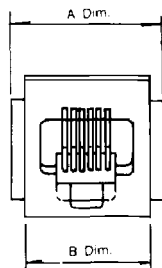
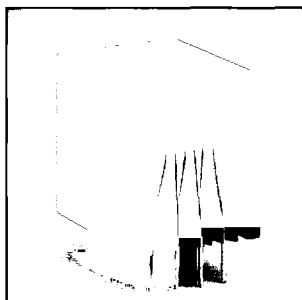


Mounting hole patterns for standard.



**TOP ENTRY  
Flangeless PCB Jack**



No. Of Positions	Dimensions			
	A	B	C	D
4	$\frac{13.97}{.550}$	$\frac{11.43}{.450}$	$\frac{7.62}{.300}$	$\frac{3.81}{.150}$
6	$\frac{16.00}{.630}$	$\frac{13.46}{.530}$	$\frac{10.16}{.400}$	$\frac{6.35}{.250}$
8	$\frac{17.84}{.700}$	$\frac{15.36}{.605}$	$\frac{11.80}{.465}$	$\frac{8.89}{.350}$

**Technical Data**

**Housing: Standard Material**

Glass Filled Polyester UL94V-0

Standard Colour:Black

**Contact: 0.46mm Diameter Phosphor Bronze**

Gold Plating Over Nickel

**Gold Plating:**

1.  $0.38\mu$  m/ $15\mu$  inch minimum
2.  $0.76\mu$  m/ $30\mu$  inch minimum
3.  $1.27\mu$  m/ $50\mu$  inch minimum
4.  $0.15\mu$  m/ $6\mu$  inch minimum
5. Palladium Wire

**Ordering Data**

Part Number	No. Of Positions	No. Of Contacts	Gold Plating	Part Number	No. Of Positions	No. Of Contacts	Gold Plating
9605-01	4	4	1	9607-13	6	4	3
9605-02	4	4	2	9607-14	6	4	4
9605-03	4	4	3	9607-15	6	4	5
9605-04	4	4	4	9607-21	6	2	1
9605-05	4	4	5	9607-22	6	2	2
9607-01	6	6	1	9607-23	6	2	3
9607-02	6	6	2	9607-24	6	2	4
9607-03	6	6	3	9607-25	6	2	5
9607-04	6	6	4	9628-01	8	8	1
9607-05	6	6	5	9628-02	8	8	2
9607-11	6	4	1	9628-03	8	8	3
9607-12	6	4	2	9628-05	8	8	5