



# MCX Series

The MCX series is approximately 30% smaller in size than the SMB and operates up to 6GHz. It features a quick connect-disconnect snap-on coupling system and is most often used where space and weight are concerns. Typical applications are GPS, Telecommunications and Base Stations.

## MIL-C-39012 Paragraph

### Electrical Specification:

Impedance:	50 Ω 75 Ω	
Frequency Range:	Up to 2 GHz	
Contact Current:	DC 1.5A Max.	
Voltage Rating:	250 V RMS	
Contact Resistance:	Center contacts 5.0mΩ	(3-16)
	Outer contacts 1.0 mΩ	
Insulation Resistance:	5000 MΩ, min.	(3-11)
Insertion Loss:	0.1dB max, 5000 MHz	(3-27)
VSWR:	≤ 1.5	(3-14)

### Environmental Data:

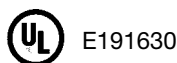
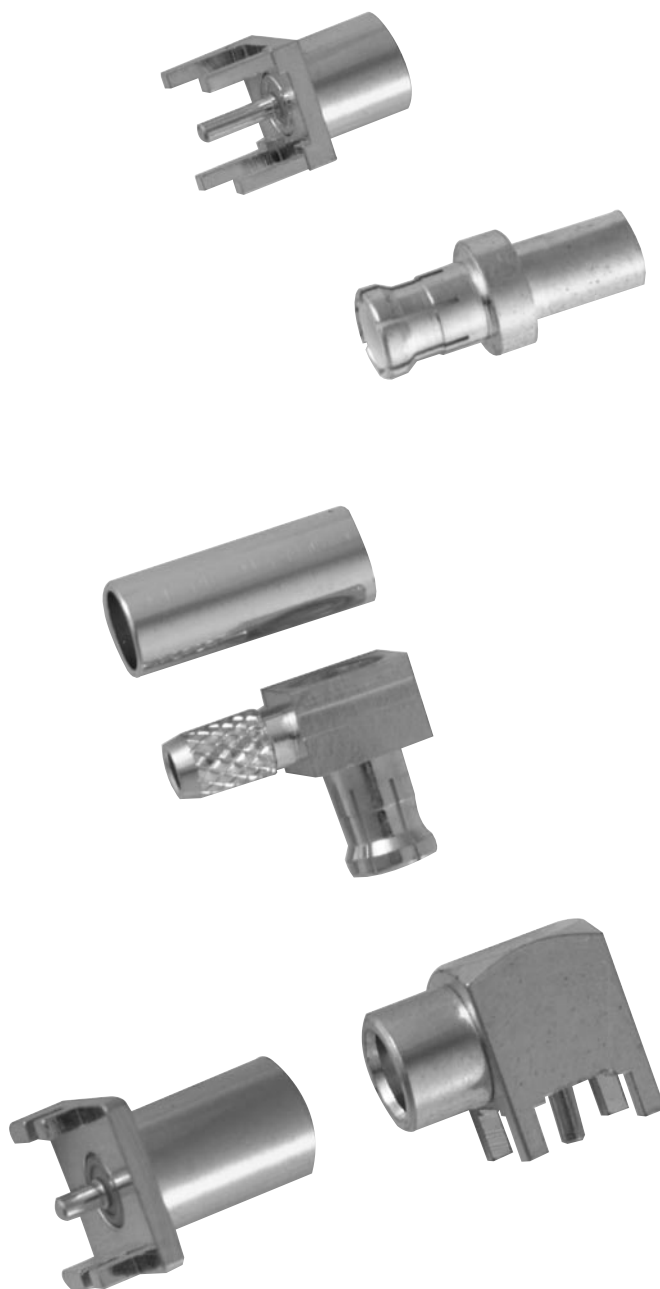
Temperature Range:	-55°C ~ +125°C	
Corrosion Resistance:		
MIL-STD-202 Methode 101 Condition B		(3-13)
Humidity:		
MIL-STD-202 Methode 106 Condition D		(3-21)
Thermal Shock:		
MIL-STD-202 Methode 102 Condition C		
Vibration:		
MIL-STD-202 Methode 204 Condition B		(3-18)

### Materials:

Inner Contacts, Socket Pin:	Beryllium Copper
Outer Contacts:	Beryllium Copper
Insulators:	PTFE Teflon
Bodies:	Brass

### Platings

Bodies:	Gold Plated
Center Contacts:	Gold Plated



Methode offers additional products and options, not illustrated in the catalog. Please contact the factory if you require additional assistance to resolve your design needs.



North and South America:

**Methode Electronics, Inc. Connector Products**

1700 Hicks Road • Rolling Meadows, IL 60008 USA  
847-392-3500 • Toll Free: 800-323-6864 • Fax: 847-392-9404

Email: info@methode.com • Web: www.methode.com/connector/index.html

Europe:

**Methode Electronics Ireland, Ltd.**

11 Annacotty Business Park • Limerick, Ireland  
353 61 330013 • Fax: 353 61 330803

Email: info@methode.ie • Web: ireland.methode.com/main.html

Far East:

**Methode Electronics Far East, Pte. Ltd.**

1 Tuas Lane, Jurong Town • Singapore 638610  
65-68615444 • Fax: 65-68614777

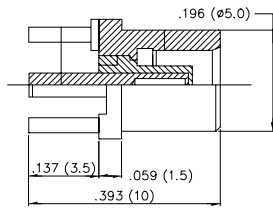
Email: sales@methode.com.sg • Web: www.methode.com/mefe/index.html



# MCX Series

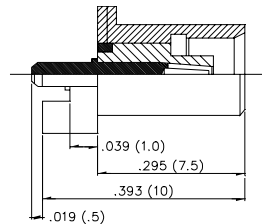
## MMC01

MCX STRAIGHT JACK PCB MOUNT



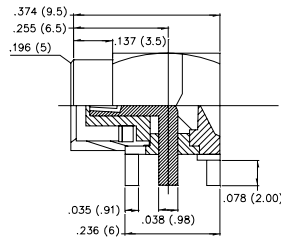
## MMC02

MCX STRAIGHT JACK PCB EDGE MOUNT



## MMC03

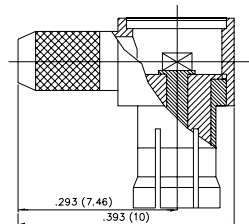
MCX RIGHT ANGLE JACK PCB MOUNT



## MMC04

RG174    RG188    RG316

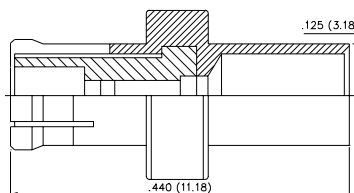
MCX RIGHT ANGLE PLUG



## MMC05

RG178

MCX STRAIGHT PLUG



North and South America:

**Methode Electronics, Inc. Connector Products**

1700 Hicks Road • Rolling Meadows, IL 60008 USA

847-392-3500 • Toll Free: 800-323-6864 • Fax: 847-392-9404

Email: info@methode.com • Web: www.methode.com/connector/index.html

Europe:

**Methode Electronics Ireland, Ltd.**

11 Annacotty Business Park • Limerick, Ireland

353 61 330013 • Fax: 353 61 330803

Email: info@methode.ie • Web: ireland.methode.com/main.html

Far East:

**Methode Electronics Far East, Pte. Ltd.**

1 Tuas Lane, Jurong Town • Singapore 638610

65-68615444 • Fax: 65-68614777

Email: sales@methode.com.sg • Web: www.methode.com/mefe/index.html



# RF/Microwave/Coax Connectors



**F SERIES**



**TNC SERIES**



**N SERIES**



**MINI-UHF SERIES**



**UHF SERIES**



**SMA SERIES**



**RCA SERIES**



**SMB SERIES**



**PAL SERIES**



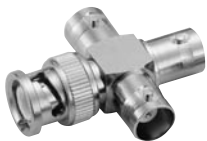
**MCX SERIES**



**FME SERIES**



**MMCX SERIES**



**BNC SERIES**

## PART NUMBER LEGEND

**MX(X) - XXX - X - XX - XX**

### IMPEDANCE

- 50 = 50Ω
- 75 = 75Ω
- 95 = 95Ω

### CABLE GROUP / MOUNTING STYLE

- 00 = PCB Mount
- 01 = 55U/58/58A/58C/140U/141/141A/142U/223U/303
- 02 = 58 Teflon/58 Thinet/Belden® 9907
- 03 = 59/59A/59B/62/62AU/62B/62C/210
- 04 = 59 Teflon
- 05 = 174U/188A/316U
- 06 = 179U/187U
- 07 = 8/8A/213/214/11/11A
- 08 = 6/6A/143/212
- 09 = Belden® 8227/89207
- 10 = .141 Semi-Rigid
- 11 = .085/.086 Semi-Rigid
- 12 = Bulkhead Mount
- 13 = Chassis Mount
- 14 = Panel Mount

### INSULATOR TYPE

- T = Teflon
- D = Delrin
- PP = Polypropylene

### TYPE

001 through 999

### SERIES

- B = BNC
- T = TNC
- MU = MINI-UHF
- TN = TWINAX
- SA = SMA
- SB = SMB
- MC = MCX
- MX = MMCX
- F = F
- N = N
- U = UHF
- R = RCA
- MR = MINI-RCA
- FM = FME
- P = PAL TV
- SC = SMC
- 7 = DIN 7/16



North and South America:

**Methode Electronics, Inc. Connector Products**

1700 Hicks Road • Rolling Meadows, IL 60008 USA  
847-392-3500 • Toll Free: 800-323-6864 • Fax: 847-392-9404

Email: info@methode.com • Web: www.methode.com/connector/index.html

Europe:

**Methode Electronics Ireland, Ltd.**

11 Annacotty Business Park • Limerick, Ireland  
353 61 330013 • Fax: 353 61 330803

Email: info@methode.ie • Web: ireland.methode.com/main.html

Far East:

**Methode Electronics Far East, Pte. Ltd.**

1 Tuas Lane, Jurong Town • Singapore 638610  
65-68615444 • Fax: 65-68614777

Email: sales@methode.com.sg • Web: www.methode.com/mefe/index.html