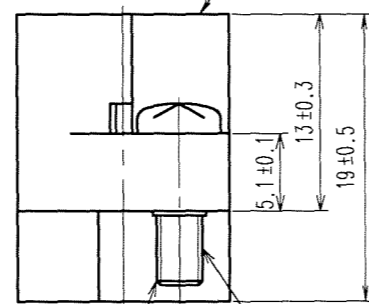
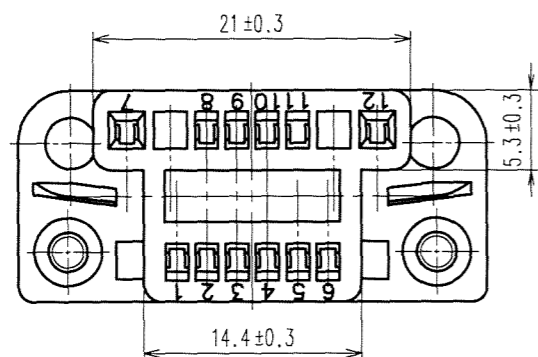
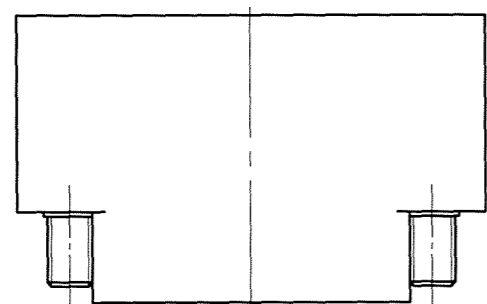
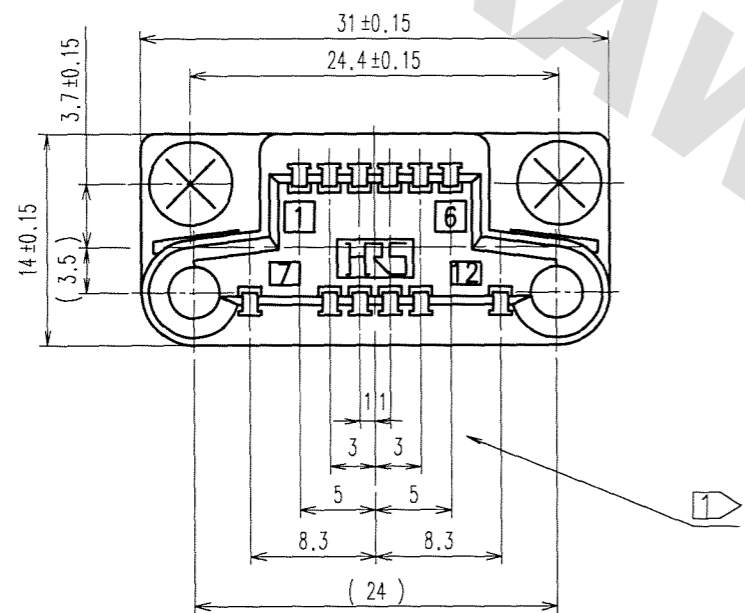


TABLE 1

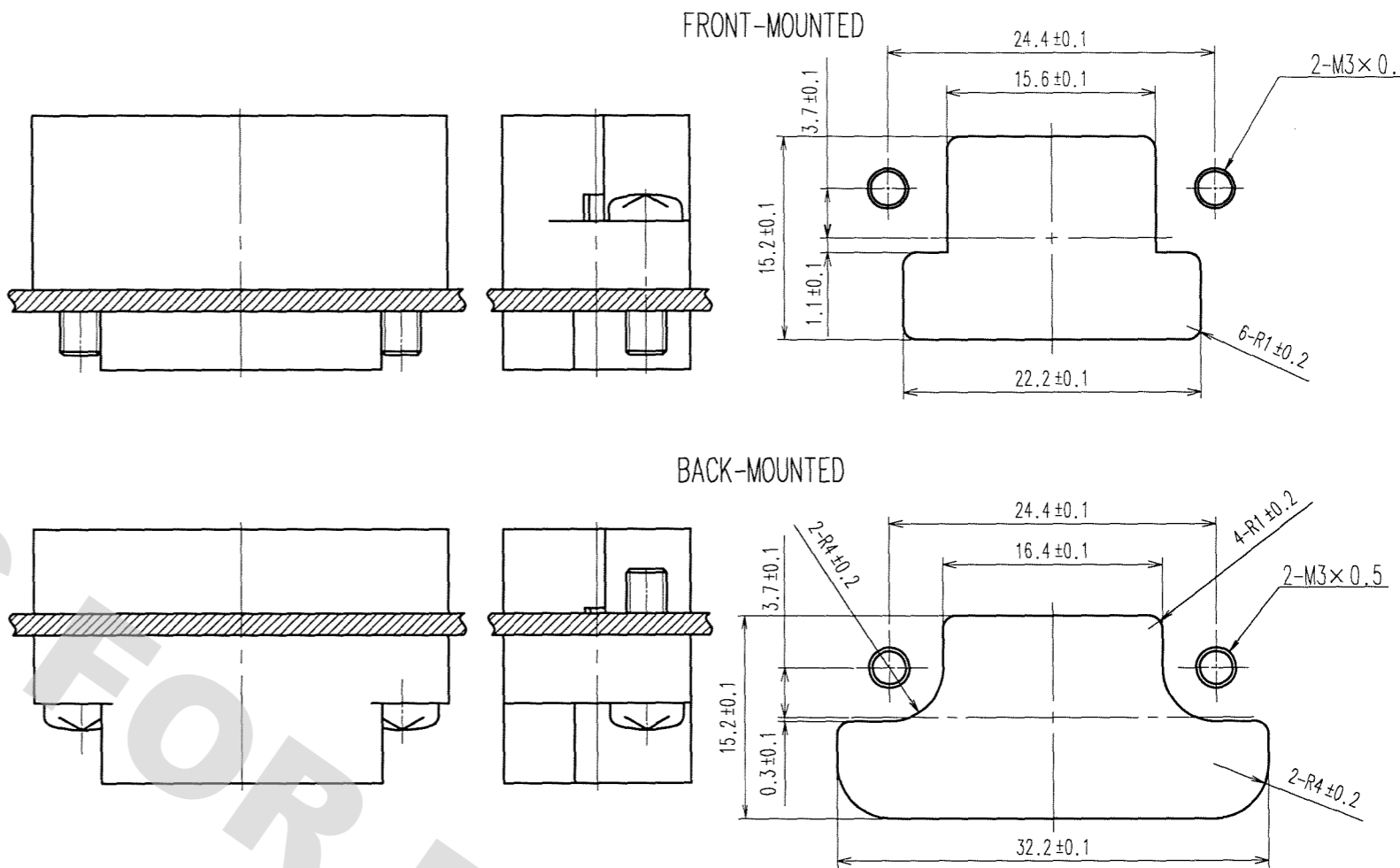
	APPLICABLE CONTACT	AWGNO.	UL, CSA	TUV	CONTACT NO.
OPERATING TEMPERATURE RANGE			-10~60°C		
RATED VOLTAGE			300V AC	AC 288V	7, 12
			30V AC	AC 38V	1~12
CURRENT RATING	QR/P8-SC-※11	AWG#20	3A	2.5A	7, 12
		AWG#22	3A	1A	
		AWG#24	2A	1A	
	QR/P8-SC-※21	AWG#24	2A	1A	1~12
		AWG#26	1A	1A	
		AWG#28	1A		

※ : 1 - LOOSE PIECE CONTACT CURRENT RATING  
2 - STRIP CONTACT CURRENT RATING



COUNT	DESCRIPTION OF REVISIONS	BY	CHKD	DATE	COUNT	DESCRIPTION OF REVISIONS	BY	CHKD	DATE
△					△				
△					△				
△					△				

PANEL CUTOUT ( 2:1 )



- NOTES
- THE TOLERANCE FOR EACH TERMINAL HOLE IS  $\pm 0.1$ .
  - THE DIMENSION SHOWN IN PARENTHESES ( ) IS FOR REFERENCE.
  - OPERATING TEMPERATURE RANGE, RATED VOLTAGE, CURRENT RATING ARE PER TABLE 1.
  - THIS CONNECTOR CAN BE MOVED 0.4mm MAX. IN ALL DIRECTIONS.
  - DIRECTIONS FOR USE  
(1) PLEASE DO NOT USE FOR THE PURPOSE OF INTERRUPTING THE CURRENT.  
(2) PLEASE USE THIS CONNECTOR IN ENCLOSURE.

1	POLYCARBONATE	BLACK	UL94V-0	2	STEEL	NICKEL PLATED : SHOULDER SCREW M3×0.5		
NO.	MATERIAL	FINISH,	REMARKS	NO.	MATERIAL	FINISH, REMARKS		
CODE NO. (OLD)				DRAWN	DESIGNED	CHECKED	APPROVED	RELEASED
				J. Watanabe	J. Watanabe	X. Miura	X. Miura	
				06.10.31	06.10.31	06.10.31	06.10.31	
SCALE	DRAWING NO. EDC3-027644-02			PART NO. QR/P8-12S-C(01)				
UNITS	mm			CODE NO. CL221-0170-8-01			1	1
	HRS HIROSE ELECTRIC CO., LTD							

DRAWING FOR REFERENCE: This is subject to change without notice 08/11/2012

TO
Q