

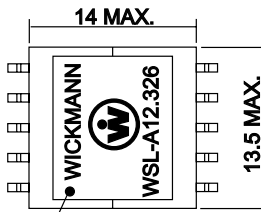
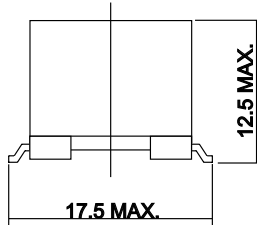
ADSL-Transformer

WSL-A12.326

Specifications



Schematics & Mechanicals (mm)



BLACK DOT IS PIN NO.1

Application

CPE, Globespan DMT / EL-1501

Safety Agency

IEC 950

Features

Optimized magnetic shielding for low interference
High performance, high quality design
SMT and THT package available

WebLinks

Data Sheet

www.wickmann.com/products/WSL_A12326.pdf

Packaging

www.wickmann.com/pack

Packaging

100 pcs./tray
7 trays/carton

Solderability

270 - 300°C


Isolation voltage

1875 VAC

Operation Temperature Range

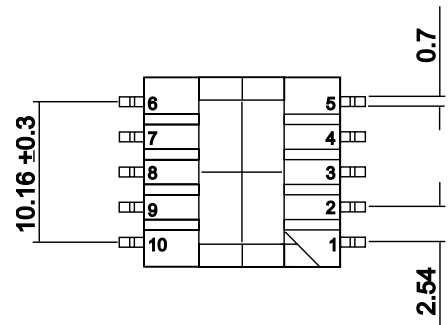
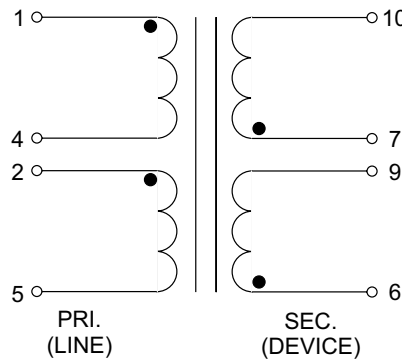
-40°C to +85°C

Marking

 article-no.

Unit Weight

6g



DC Resistance:	0,39 Ω (1-4) max. ±10%
	0,39 Ω (2-5) max. ±10%
	0,33 Ω (6-9) max. ±10%
	0,33 Ω (7-10) max. ±10%
Open Circuit Inductance:	407,5μH ±10% @ 10kHz, 100mVAC on series, (1-5), short (2+4)
Turns Ratio:	1:1 ±1% (1-5):(10-6)
Leakage Inductance:	10,0μH max. 10kHz, 100mVAC (1-5), short (2+4, 6+10, 7+9)
Longitudinal Balance:	55dB min. @ 20kHz-1,1MHz, ITU method (L->M)
Interwinding Capacity:	
Reflects 100Ω @ R _L =	100 Ω load on sec. @ 300kHz, 100mVAC
Insertion Loss:	0,5dB max. @ 772kHz, IEEE method, 100Ω load
Total Harmonic Distortion (THD):	85dB min. @ 100 kHz, 5,3VAC, short (2+4, 7+9), 100Ω load, 100Ω input

Order Information

Qty.	Order Number
	960 4 612326 9