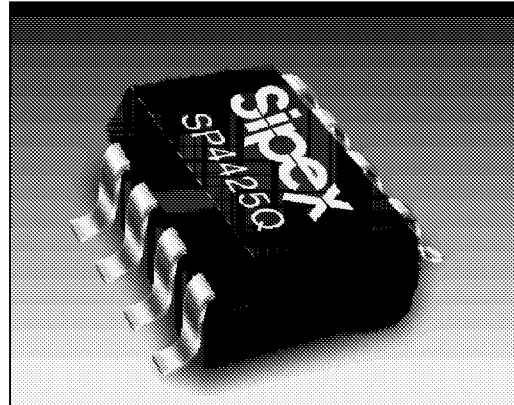


## Electroluminescent Lamp Driver for Low Noise Applications

- Low Noise Waveform
- Tunable Waveshaping
- DC to AC Inverter for EL Backlit Display Panels
- Externally Adjustable Internal Oscillator
- Low Current Standby Mode

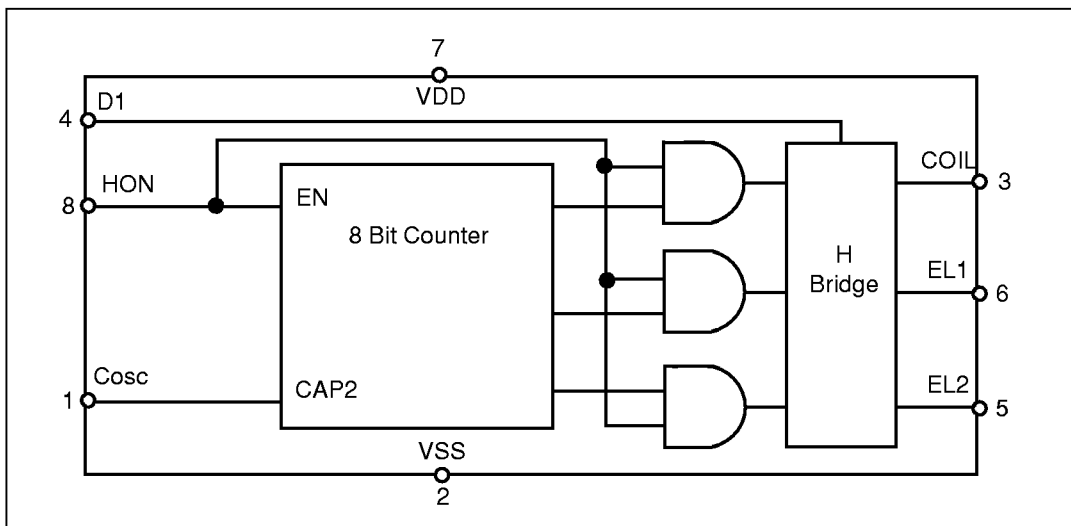
### APPLICATIONS

- Cellular Phones
- Cordless Phones
- Handsets
- Backlit LCD Displays



### DESCRIPTION

The **SP4425Q** is a high voltage output DC-AC converter that can operate from a single 3.0 Vdc power supply. The **SP4425Q** is capable of supplying up to 220 Vpp signals, making it ideal for driving electroluminescent lamps. The device features 100 nA (typ) standby current, for use in low power portable products. One external inductor is required to generate the high voltage charge, and one external capacitor is used to select the oscillator and lamp frequencies. The **SP4425Q** is offered in a micro SOIC package. For delivery in die form, please consult the factory.



**SP4425Q Block Diagram**

## ABSOLUTE MAXIMUM RATINGS

These are stress ratings only and functional operation of the device at these ratings or any other above those indicated in the operation sections of the specifications below is not implied. Exposure to absolute maximum rating conditions for extended periods of time may affect reliability.

Vdd.....	.....5V
Input Voltages/Currents	
HON (pin1).....	.....-0.5V to (V <sub>dd</sub> + 0.5V)
COIL (pin3).....	.....100mA
Lamp Outputs.....	.....230Vpp
Storage Temperature.....	.....-65°C to +150°C
Power Dissipation.....	.....200mW

The information furnished herein by Sipex has been carefully reviewed for accuracy and reliability. Its application or use, however, is solely the responsibility of the user. No responsibility for the use of this information is assumed by Sipex, and this information shall not explicitly or implicitly become part of the terms and conditions of any subsequent sales agreement with Sipex. Specifications are subject to change without prior notice. By the sale or transfer of this information, Sipex assumes no responsibility for any infringement of patents or other rights of third parties which may result from its use. No license or other proprietary rights are granted by implication or otherwise under any patent or patent rights of Sipex Corporation.

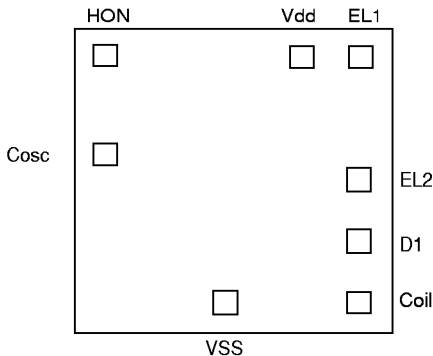
## SPECIFICATIONS

(T = 25°C; V<sub>dd</sub> = 3.0V; see test circuit schematic page 6; Coil = 2mH/44ohms; C<sub>osc</sub> = 180pF, C<sub>int</sub> = 820pF unless otherwise noted)

PARAMETER	MIN.	TYP.	MAX.	UNIT	CONDITIONS
<b>INPUT CHARACTERISTICS</b>					
Supply Voltage	2.2	3.0	3.3	Volts	
Total Supply Current		28	40	mA	Vdd = 3.0V
Supply Leakage		.1	1	μA	Vdd = 3.0V
Hon Input Current		5	20	μA	Internal pulldown, Hon = Vdd
Hon Voltage On	Vdd-.2	Vdd		Volts	
Hon Voltage Off		Vss	<Vdd/2	Volts	
<b>INDUCTOR DRIVE</b>					
Peak Current			90	mA	
Pulse Rate		22.4		kHz	(fL x 64)
Duty Cycle		90		%	
<b>LAMP OUTPUT</b>					
Lamp Frequency	300	450	500	Hz	Vdd = 3.0V
	225	450	775	Hz	Vdd = 3.0V; -40°C to +85°C
Differential Voltage	90	120		Vpp	Vdd = 2.2V
	140	160		Vpp	Vdd = 3.0V
	90	160		Vpp	Vdd = 3.0V; -40°C to +85°C

This data sheet specifies environmental parameters, final test conditions and limits as well suggested operating conditions. For applications which require performance beyond the specified condition and or limits please consult the factory.

## Bonding Diagram:

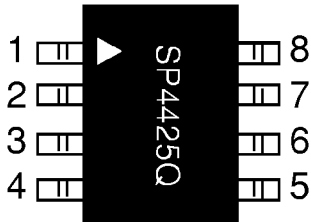


PAD	X	Y
Vdd	261.0	427.0
EL1	813.0	429.0
EL2	813.0	28.0
D1	813.0	-172.0
COIL	767.0	-381.0
Vss	143.5	-412.0
Cosc	-790.0	-157.5
HON	-785.5	402.0

### NOTES:

1. Dimensions are in Microns unless otherwise noted.
2. Bonding pads are 125x125 typ.
3. Outside dimensions are maximum, including scribe area.
4. Die thickness is 380 +/- 25 microns (15 mils +/- 1).
5. Pad center coordinates are relative to die center.
6. Die size 74 x 44 mils.

## PIN DESCRIPTION



Pin 1 – Cosc- Capacitor input 1, connect Capacitor from Vss to Pin 1 to set Cosc frequency.

Pin 2 – Vss- Power supply common, connect to ground.

Pin 3 – Coil- Coil input, connect coil from Vdd to pin 3.

Pin 4 – D1- Diode Cathode connection.

– Cint- Integrator capacitor, connect capacitor from pin 4 to ground to minimize coil glitch energy.

Pin 5 – Lamp- Lamp driver output2, connect to EL lamp.

Pin 6 – Lamp- Lamp driver output1, connect to EL lamp.

Pin 7 – Vdd- Power supply for driver, connect to system Vdd.

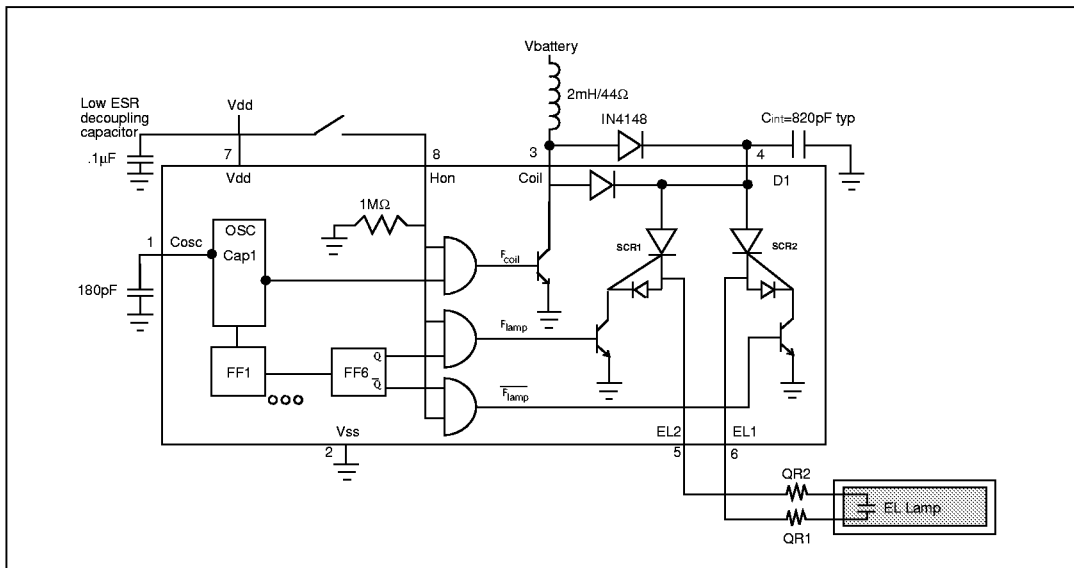
Pin 8 – HON- Enable for driver operation, high = active; low = inactive.

## THEORY OF OPERATION

The **SP4425Q** is made up of three basic circuit elements, an oscillator, coil, and switched H-bridge network. The oscillator provides the device with an on-chip clock source used to control the charge and discharge phases for the coil and lamp. An external capacitor connected between pins 1 and Vss allows the user to vary the oscillator frequency. The graphs on page 6 show the relationship between  $C_{osc}$  and lamp output voltage. For a given choice of coil inductance there will be an optimum  $C_{osc}$  Cap valve that gives the maximum light output.

The suggested oscillator frequency is 20kHz ( $C_{osc}=180\text{pF}$ ). The oscillator output is internally divided to create the control signal for  $F_{lamp}$ . The oscillator output is internally divided down by 6 flip flops, a 20kHz signal will be divided into 6 frequency levels; 10kHz, 5kHz, 2.5kHz, 1.25kHz, .625kHz, .312kHz. The oscillator output (20kHz) is used to drive the coil (see **figure 2** on **page 8**) and the sixth flip flop output (300Hz) is used to drive the lamp. Although the oscillator frequency can be varied to optimize the lamp output, the ratio of  $F_{coil}/F_{lamp}$  will always equal 64.

The coil is an external component connected from  $V_{battery}$  to pin 3 of the **SP4425Q**.  $V_{battery} = 3.0\text{VDC}$  with a 2mH/44Ω coil are typical conditions. Energy is stored in the coil according to the equation  $E_L = 1/2LI^2$ , where I is the peak current flowing in the



**SP4425Q Schematic**

inductor. The current in the inductor is time dependent and is set by the "ON" time of the coil switch:  $I=(V_L/L)t_{on}$ , where  $V_L$  is the voltage across the inductor. At the moment the switch closes, the current in the inductor is zero and the entire supply voltage (minus the  $V_{sat}$  of the switch) is across the inductor. The current in the inductor will then ramp up at a linear rate. As the current in the inductor builds up, the voltage across the inductor will decrease due to the resistance of the coil and the "ON" resistance of the switch:  $V_L=V_{bat}-IR_L-V_{sat}$ . Since the voltage across the inductor is decreasing, the current ramp-rate also decreases which reduces the current in the coil at the end of  $t_{on}$  the energy stored in the inductor per coil cycle and therefore the light output. The other important issue is that maximum current (saturation current) in the coil is set by the design and manufacture of the coil. If the parameters of the application such as  $V_{bat}$ ,  $L$ ,  $R_L$  or  $t_{on}$  cause the current in the coil to increase beyond its rated  $I_{sat}$ , excessive heat will be generated and the power efficiency will decrease with no additional light output.

The majority of the current goes through the coil and typically less than 2mA is required for  $V_{dd}$  of the **SP4425Q**.  $V_{dd}$  can range from 2.2V to 3.3V; it is not necessary that  $V_{dd}=V_{battery}$ . Coils are also a function of the core material and winding used - performance variances may be noticeable from different coil suppliers. The Sipex **SP4425Q** is final tested at 3.0V using a 2mH/44 $\Omega$  coil from Matsushita. For suggested coil sources see [page 10](#).

The  $F_{coil}$  signal controls a switch that connects the end of the coil at pin 3 to ground or to open circuit. The  $F_{coil}$  signal is a 90% duty cycle signal switching at the oscillator frequency. During the time when the  $F_{coil}$  signal is high, the coil is connected from  $V_{battery}$  to ground and a charged magnetic field is created in the coil. During the low part of  $F_{coil}$ , the ground connection is switched open, the field collapses and the energy in the inductor is forced to flow toward the lamp.  $F_{coil}$  will send 32 of these charge pulses (see [figure 2 page 9](#)) lamp, each pulse increases the voltage drop across the lamp in discrete steps. As the voltage potential approaches its maximum, the steps become smaller (see [figure 1 page 9](#)).

The H-bridge consists of two SCR structures that act as high voltage switches. These two switches control the polarity of how the lamp is charged. The SCR switches are controlled by the  $F_{lamp}$  signal which is the oscillator frequency divided by 64. For a 20kHz oscillator,  $F_{lamp}=300\text{Hz}$ .

When the energy from the coil is released, a high voltage spike is created triggering the SCR switches. The direction of current flow is determined by which SCR is enabled. One full cycle of the H-bridge will create a voltage step from ground to 80V (typ) on pins 5 and 6 which are 180 degrees out of phase with each other (see [figure 3 page 8](#)). A differential view of the outputs is shown in [figure 4 on page 9](#).

## Layout Considerations

The SP4425 circuit board layout must observe careful analog precautions. For applications with noisy power supply voltages, a 0.1 $\mu\text{F}$  low ESR decoupling capacitor must be connected from  $V_{dd}$  to ground. Any high voltage traces should be isolated from any digital clock traces or enable lines. A solid ground plane connection is strongly recommended. All traces to the coil or to the high voltage outputs should be kept as short as possible to minimize capacitive coupling to digital clock lines and to reduce EMI emissions.

## Integrator Capacitor

An integrating capacitor must be placed from pin 4 (D1) to ground in order to minimize glitches associated with switching the coil. A capacitor at this point will collect the high voltage spikes and will maximize the peak to peak voltage output. High resistance EL lamps will produce more pronounced spiking on the EL output waveform; adding the  $C_{int}$  capacitor will minimize the peaking and increase the voltage output at each coil step. The value of the integrator capacitor is application specific typical values can range from 500pF to 0.1 $\mu\text{F}$ . No integrator capacitor or very small values (500pF) will have a minor effect on the output, whereas a 0.1 $\mu\text{F}$  capacitor will cause the output to charge more rapidly creating a square wave output. For most 3V applications an 820 pF integrator capacitor is suitable.

## Waveshaping

The **SP4425Q** allows the user to "tune" the output waveform for specific application requirements. External resistors, QR1 and QR2 (see SP4425QCU schematic *page 3*) can be adjusted to remove any sharp, high frequency edges present on the EL output waveform. Typical values range from 5k $\Omega$  to 20k $\Omega$ , the waveforms on *page 8* show the effect that the Q resistors have on the output. As the sharp discharge edge is filtered, the available noise from the vibration of the lamp is reduced. The user must balance the noise performance with the light output performance to achieve the desired results.

## Electroluminescent Technology

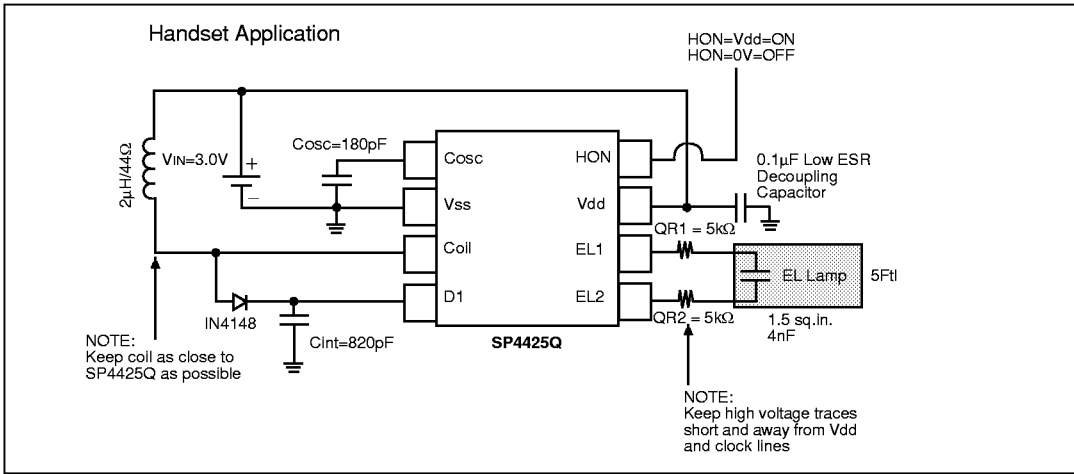
### What is electroluminescence?

An EL lamp is basically a strip of plastic that is coated with a phosphorous material which emits light (fluoresces) when a high voltage (>40V) which was first applied across it, is removed or reversed. Long periods of DC voltages applied to the material tend to breakdown the material and reduce its lifetime. With these considerations in mind, the ideal signal to drive an EL lamp is a high voltage sine wave. Traditional approaches to achieving this type of waveform included discrete circuits incorporating a transformer, transistors, and several resistors and capacitors. This approach is large and bulky, and cannot be implemented in most hand held equipment. Sipex now offers low power single chip driver circuits specifically designed to drive small to medium sized electroluminescent panels if all that is required is one external inductor fast recovery diode and two capacitors.

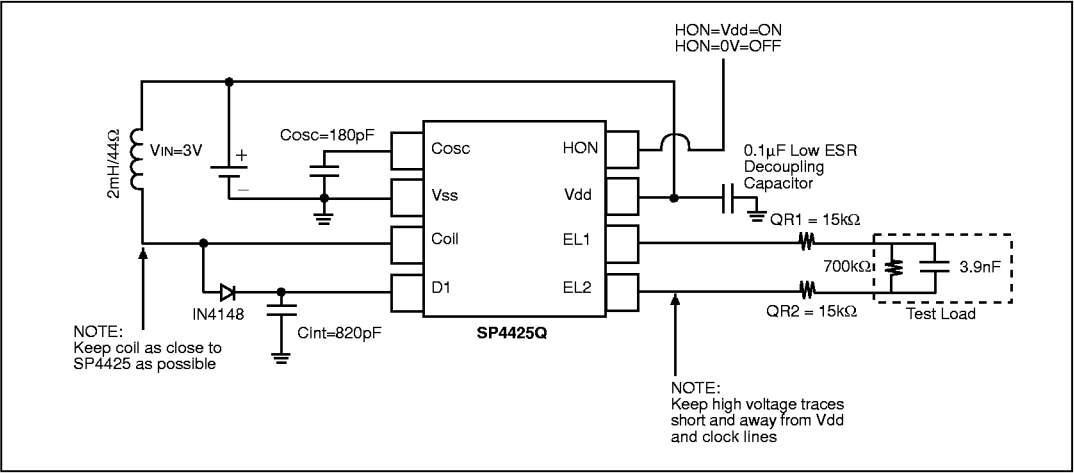
Electroluminescent backlighting is ideal when used with LCD displays, keypads, or other backlit readouts. Its main use is to illuminate displays in dim to dark conditions for momentary periods of time. EL lamps typically consume less than LEDs or bulbs making them ideal for battery powered products. Also, EL lamps are able to evenly light an area without creating "hot spots" in the display.

The amount of light emitted is a function of the voltage applied to the lamp, the frequency at which it is applied, the lamp material used and its size, and lastly, the inductor used. Both voltage and frequency are directly related to light output. In other words as the voltage or the frequency of the EL output is increased the light output will also increase. The voltage has a much larger impact on light output than the frequency does. For example, an output signal of 168Vpp with a frequency of 500Hz can yield 15Cd/m<sup>2</sup>, in the same application a different EL driver could produce 170Vpp with a frequency of 450Hz and can also yield 15Cd/m<sup>2</sup>. Variations in peak to peak voltage and variations in lamp frequency are to be expected, light output will also vary from device to device however typical light output variations are usually not visually noticeable.

There are many variables which can be optimized for specific applications. Sipex supplies characterization charts to aid the designer in selecting the optimum circuit configuration (see *page 7 and 8*).

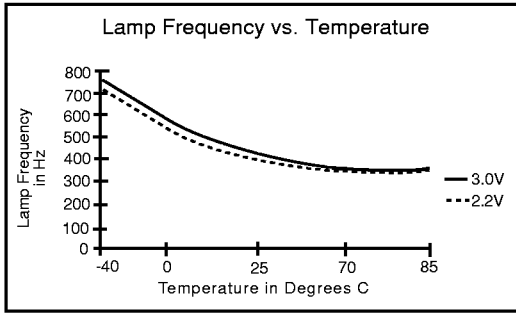


**Typical SP4425Q Application Circuit**

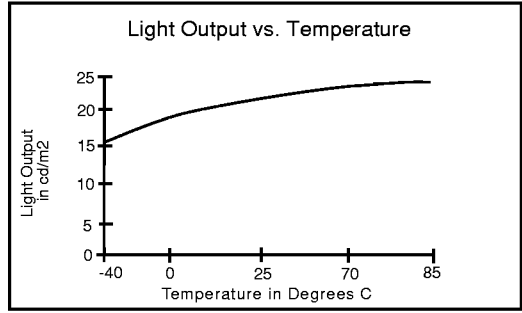


**SP4425Q 3V Test Circuit**

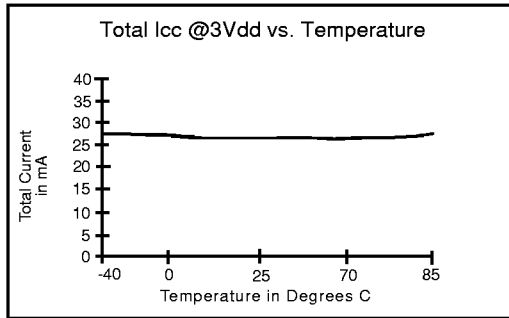
The following performance curves are intended to give the designer a relative scale from which to optimize specific applications. Absolute measurements may vary depending upon the brand of components chosen.



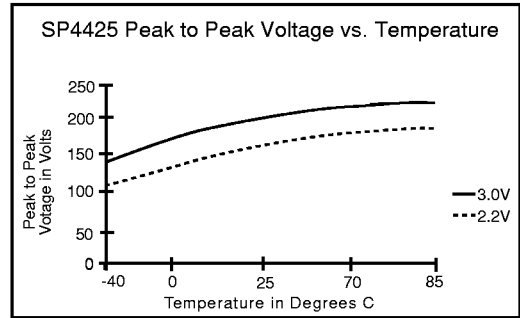
Coil=2mH/44Ω; Cosc=180pF;  
Cint=470pF; Cload=4nF



Coil=2mH/44Ω; Cosc=180pF;  
Cint=470pF; Vdd=3.0V; Load=3 sq.in.

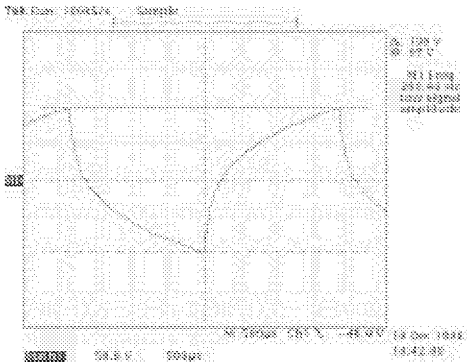
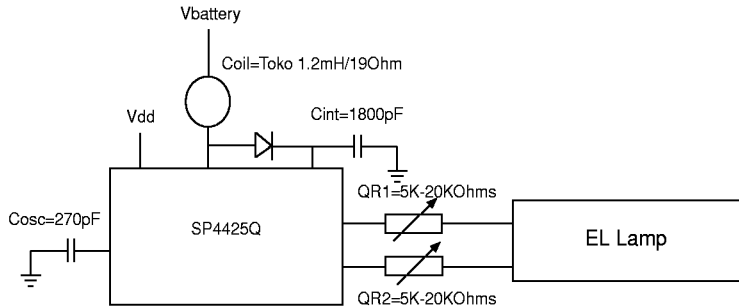


Coil=2mH/44Ω; Cosc=180pF;  
Cint=470pF; Cload=4nF

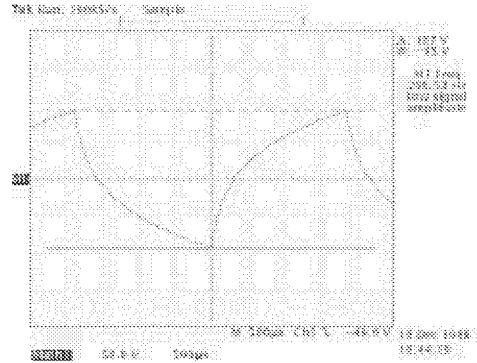


Coil=2mH/44Ω; Cosc=180pF;  
Cint=470pF; Cload=4nF

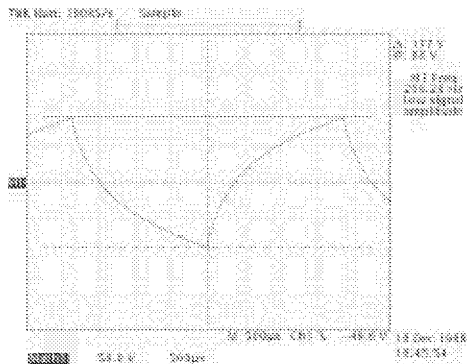
The following scope photos show the affect the tuning resistors (QR1 and QR2) have on the output waveform. Figure 1. Implements only 5Kohms of series resistance introducing only a slight amount of filtering of the discharge edge. Figure 2 shows that if the values are increased to 10Kohms the discharge edge is reduced even further. A 20Kohm example is shown in Figure 4 and represents the most amount of filtering needed. Again, the balance in light output and audible noise must be observed for each application.



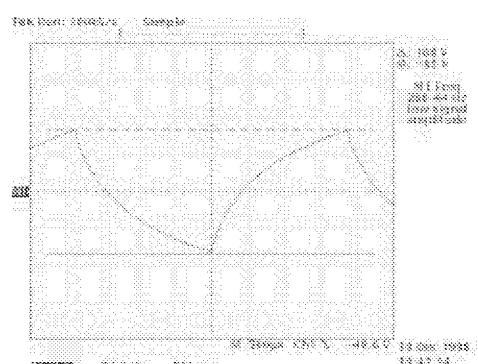
QR1=QR2=5Kohms  
 $V_{pp}=196V_{pp}$ ,  $f_{lamp}=269Hz$   
 Low noise suppression level  
 Figure 1.



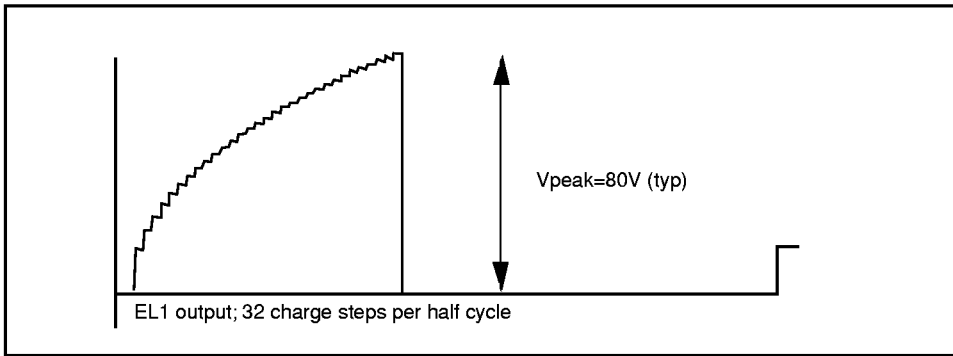
QR1=QR2=10Kohms  
 $V_{pp}=187V_{pp}$ ,  $f_{lamp}=268Hz$   
 Low noise suppression level  
 Figure 2.



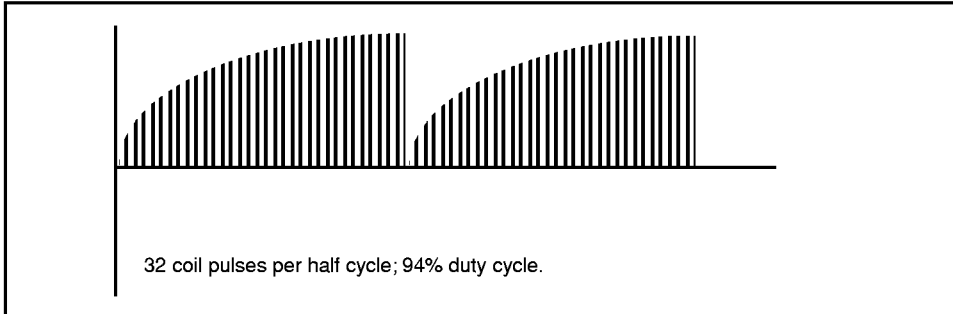
QR1=QR2=15Kohms  
 $V_{pp}=177V_{pp}$ ,  $f_{lamp}=269Hz$   
 High noise suppression level  
 Figure 3.



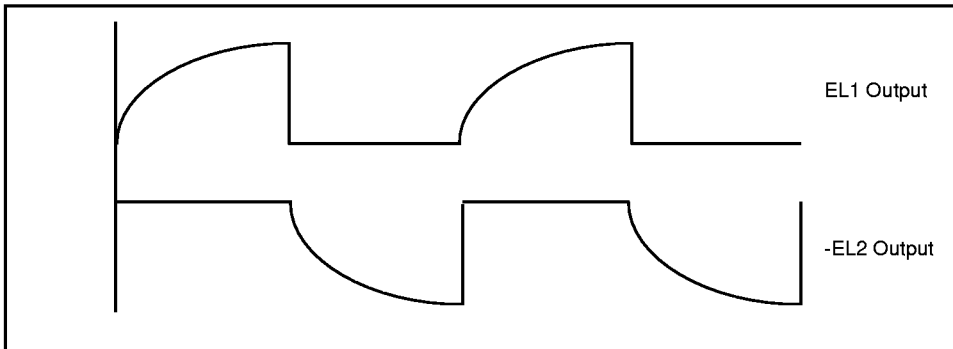
QR1=QR2=20Kohms  
 $V_{pp}=168V_{pp}$ ,  $f_{lamp}=266Hz$   
 High noise suppression level  
 Figure 4.



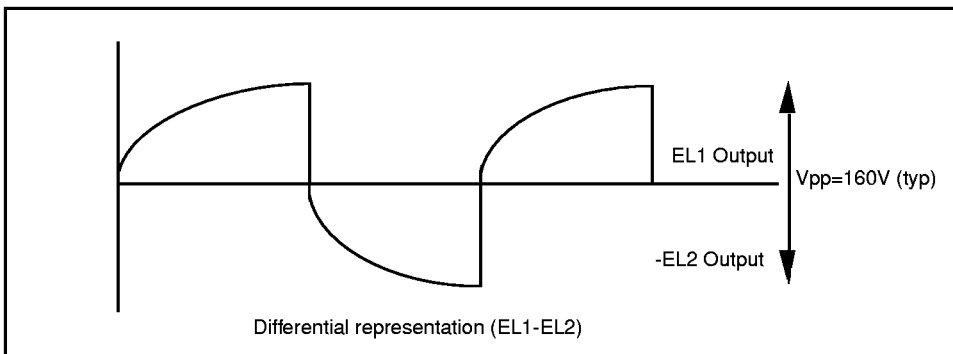
**Figure 1. EL1 Output without QR1 and QR2**



**Figure 2.**



**Figure 3. EL1, EL2 Output without QR1 and QR2**



**Figure 4. Differential Representation of (EL1 - EL2) without QR1 and QR2**

The coil part numbers presented in this data sheet have been qualified as being suitable for the SP4425 product. Contact Sipex for applications assistance in choosing coil values not listed in this data sheet.

## Coil Manufacturers

## New Coils

### Coilcraft USA

Ph: (847) 639-6400  
Fax: (847) 639-1469

### Coilcraft Taiwan

Ph: 886/2/264-3646  
Fax: 886/2/270-0294

### Coilcraft Hong Kong

Ph: 852 770-9428  
Fax: 852 770-0729

### Coilcraft Europe

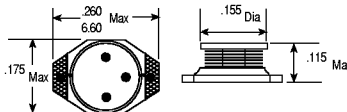
Ph: 44 01236 730595  
Fax: 44 01236 730627

### Coil Craft Singapore

Ph: 65 296-6933  
Fax: 465 296-4463 #382

### Part No. DO1608C-474

470µH, 3.60 ohm



(All Dimensions in mm)

### muRata USA

Ph: (770) 436-1300  
Fax: (770) 436-3030

### muRata Taiwan Electronics

Ph: 011 88642914151  
Fax: 011 88644252929

### muRata Hong Kong

Ph: 011-85223763898  
Fax: 011 852237555655

### muRata Europe

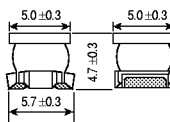
Ph: 011-4991166870  
Fax: 011-49116687225

### muRata Electronics Singapore

Ph: 011 657584233  
Fax: 011 657536181

### Part No. LQN4N471K04

470µH, 11.5 ohm



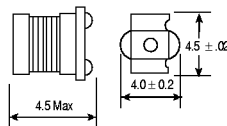
(All Dimensions in mm)

### KOA Speer Electronics, Inc.

Ph: 814-362-5536  
Fax: 814-362-8883

### Part No. LPC4045TE471K

470µH, 4.55 ohm



(All Dimensions in mm)

### Sumida Electric Co., LTD. USA

Ph: (847) 956-0666  
Fax: (847) 956-0702

### Sumida Electric Co., LTD. Singapore

Ph: 2963388  
Fax: 2963390

### Sumida Electric Co., LTD. Japan

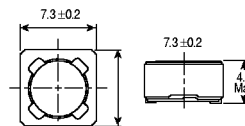
Ph: 03-3607-5111  
Fax: 03-3607-5144

### Sumida Electric Co., LTD. Hong Kong

Ph: 28806688  
Fax: 25659600

### Part No. CDRH74-471MC

470µH, 3.01 ohm



(All Dimensions in mm)

### Toko America Inc. USA

Ph: (847) 297-0070  
Fax: (847) 699-7864

### Toko Inc. Japan

Ph: 03 3727 1161  
Fax: 03 3727 1176

### Toko Inc. Hong Kong

Ph: 2342-8131  
Fax: 2341-9570

### Toko Inc. Europe

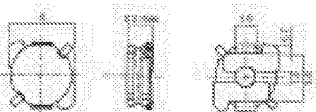
Ph: (0211) 680090  
Fax: (0211) 679-9567

### Toko Inc. Singapore

Ph: (255) 4000  
Fax: (250) 8134

### Part No. 875FU-122M

1.2mH, 19ohm



### Parasonic Industrial Co., USA

Ph: (201) 348-7000  
Fax: (201) 348-0716

### Parasonic Industrial Co., Japan

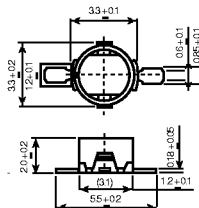
Ph: 81-3-3433-2325  
Fax: 81-3-3459-9737

### Part No. ELT3KN131

2.0mH, 44ohm

### Parasonic Industrial Co., Europe

Ph: 44-1344-862-444  
Fax: 44-1344-853-706



## EL polarizers/transflector manufacturers

Nitto Denko  
San Jose, CA  
Phone: (510) 445-5400

Astra Products  
Baldwin, NJ  
Phone: (516) 223-7500  
Fax: (516) 868-2371

## EL Lamp manufacturers

Metro Mark/Leading Edge  
Minnetonka, MN  
Phone: (800) 680-5556  
Phone: (612) 912-1700

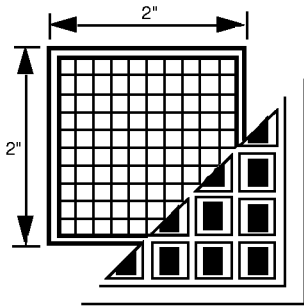
Nippon Graphite  
Boca Raton, FL  
Phone: (407) 392-2555  
Fax: (407) 392-0807

Luminescent Systems Inc. (LSI)  
Lebanon, NH  
Phone: (603) 448-3444  
Fax: (603) 448-3452

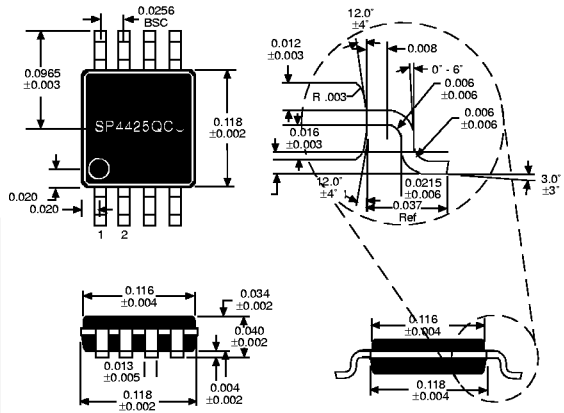
NEC Corporation  
Tokyo, Japan  
Phone: (03) 3798-9572  
Fax: (03) 3798-6134

Seiko Precision  
Chiba, Japan  
Phone: (03) 5610-7089  
Fax: (03) 5610-7177

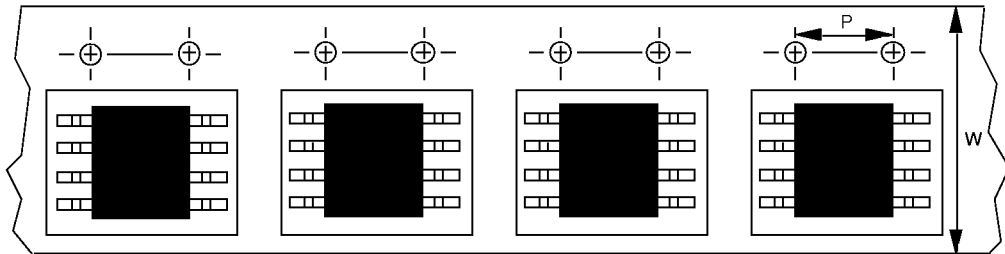
EL Tech  
Austin, TX  
Phone: (512) 252-1299  
Fax: (512) 252-1181



100 SP4425QX die per waffle pack



50 SP4425QCU per tube



NSOIC-8 13" reels: P=8mm, W=12mm  
Minimum qty per reel

Standard qty per reel

Maximum qty per reel

CU	500	2500	3000
----	-----	------	------

## ORDERING INFORMATION

Model	Operating Temperature Range	Package Type
SP4425QX .....	-40°C to +85°C .....	Die
SP4425QCU . .....	-40°C to +85°C .....	8-Pin $\mu$ SOIC
SP4425QCU/TR.....	-40°C to +85°C .....	8-Pin $\mu$ SOIC
SP4425QCUEB.....	N/A .....	$\mu$ SOIC Evaluation Board

Please consult the factory for pricing and availability on a Tape-On-Reel option.



### SIGNAL PROCESSING EXCELLENCE

#### Sipex Corporation

##### Headquarters and Sales Office

22 Linnell Circle  
Billerica, MA 01821  
TEL: (978) 667-8700  
FAX: (978) 670-9001  
e-mail: sales@sipex.com

##### Sales Office

233 South Hillview Drive  
Milpitas, CA 95035  
TEL: (978) 934-7500  
FAX: (978) 935-7600

#### European Sales Offices:

##### ENGLAND:

Sipex Corporation  
2 Linden House  
Turk Street  
Alton Hampshire GU34 1AN  
England  
TEL: 44-1420-549527  
FAX: 44-1420-542700  
e-mail: mikeb@sipex.co.uk

##### GERMANY:

Sipex GmbH  
Gautinger Strasse 10  
82319 Starnberg  
TEL: 49.81.51.89810  
FAX: 49.81.51.29598  
e-mail: sipex-starnberg@t-online.de

#### Far East:

##### JAPAN:

Nippon Sipex Corporation  
Yahagi No. 2 Building  
3-5-3 Uchikanda, Chiyoda-ku  
Tokyo 101  
TEL: 81.3.3256.0577  
FAX: 81.3.3256.0621

Sipex Corporation reserves the right to make changes to any products described herein. Sipex does not assume any liability arising out of the application or use of any product or circuit described hereing; neither does it convey any license under its patent rights nor the rights of others.