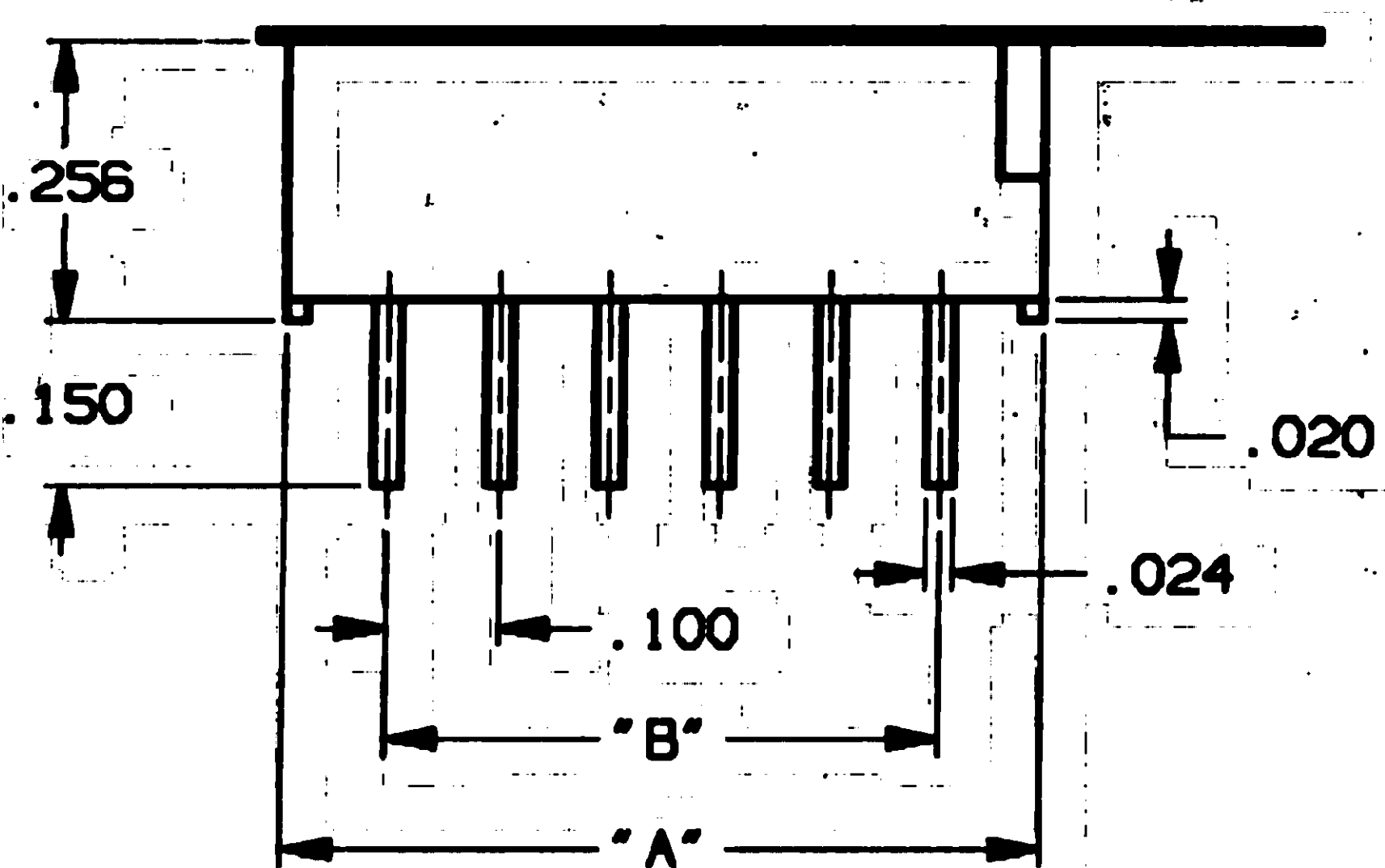
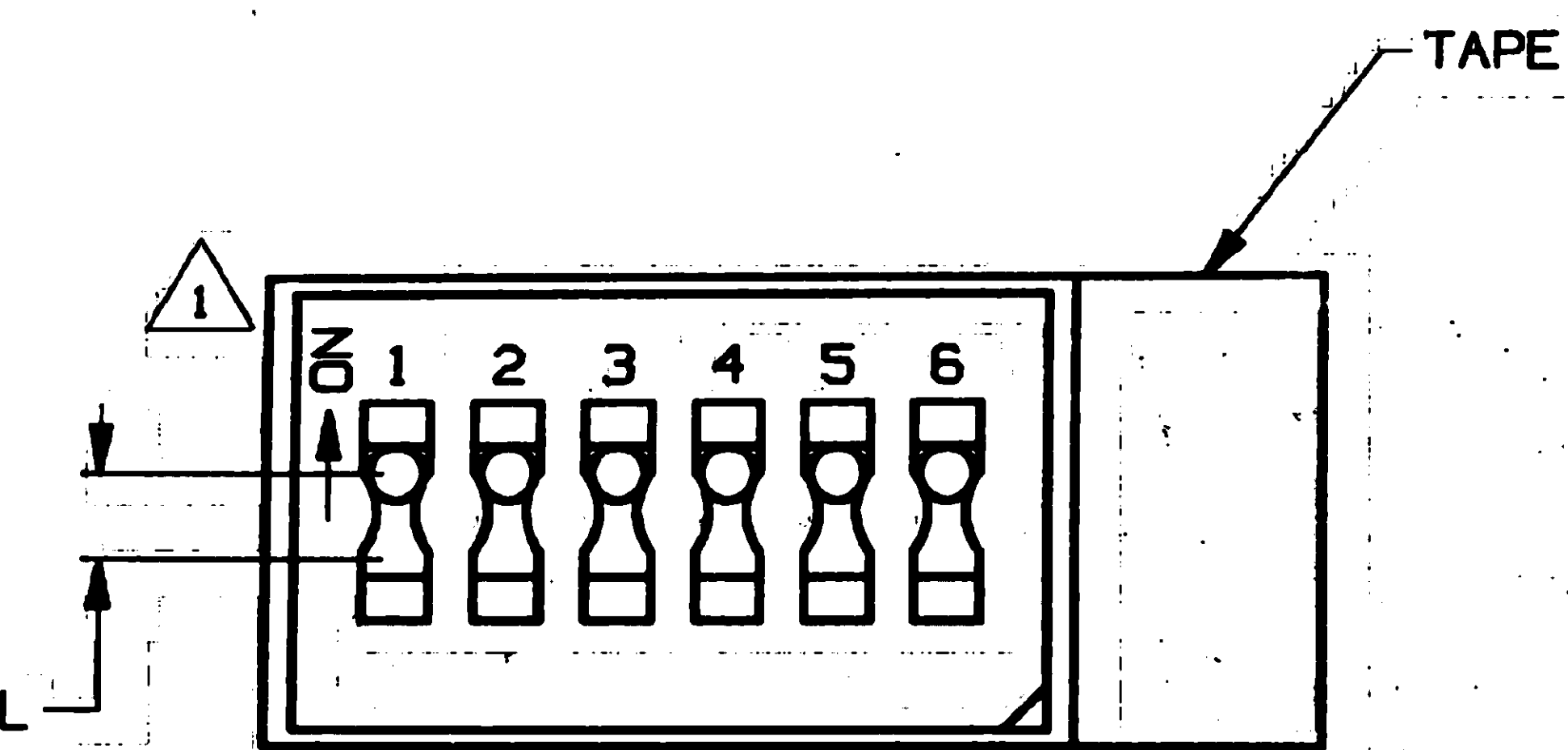
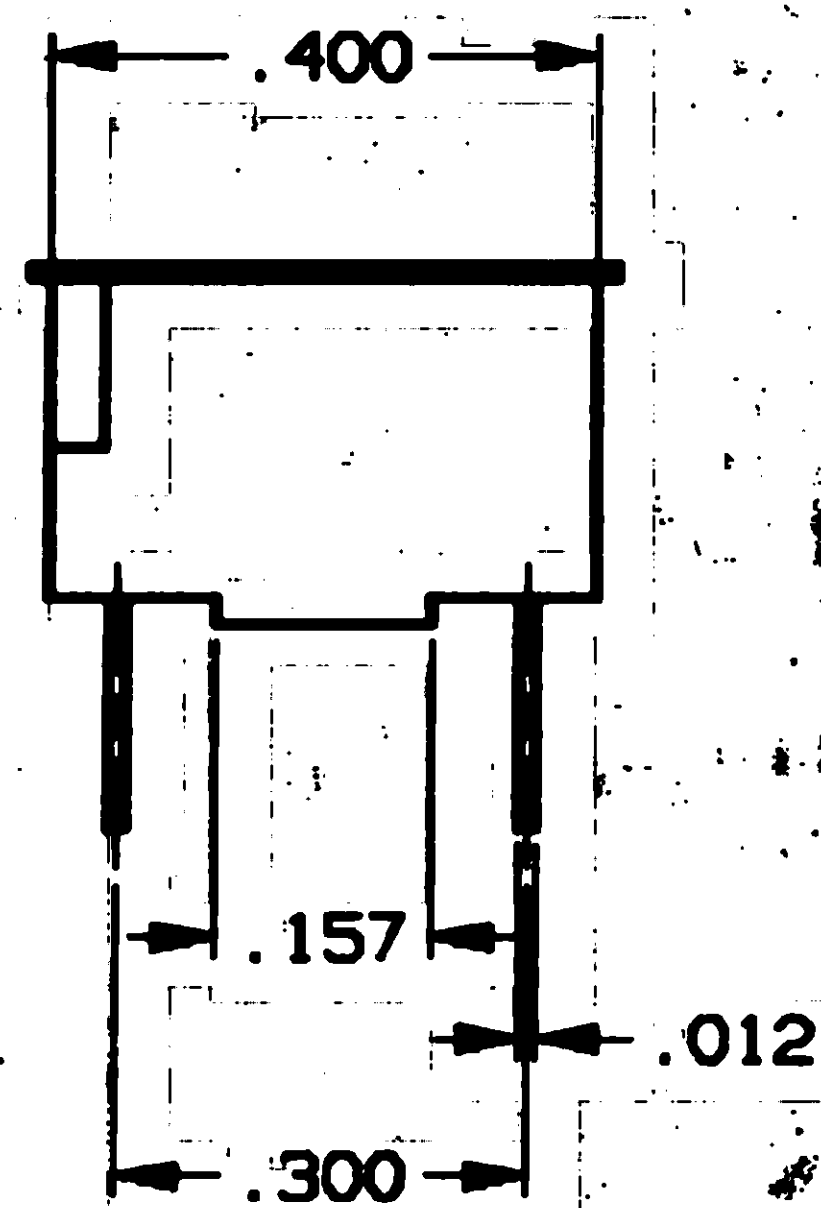


CONVERSION CHART		CONVERSION CHART	
INCH	MM	INCH	MM
.002	0.05	.890	22.61
.010	0.25	.900	22.86
.012	0.30	.998	25.35
.020	0.50	1.083	27.51

.024	0.61
.039	0.99
.079	2.00
.100	2.54
.150	3.81
.157	3.99
.197	5.00
.200	5.08
.256	6.50
.283	7.19
.300	7.62
.386	9.80
.400	10.16
.484	12.29
.500	12.70
.587	14.91
.600	15.24
.685	17.40
.700	17.78
.787	19.99
.800	20.32



MODEL	"A"	"B"
DTS1	.197	—
DTS2	.283	.100
DTS3	.386	.200
DTS4	.484	.300
DTS5	.587	.400
DTS6	.685	.500
DTS7	.787	.600
DTS8	.890	.700
DTS9	.998	.800
DTS10	1.083	.900



### 1 SPECIFICATIONS:

**MATERIAL:**  
 BASE: POLYESTER.  
 HOUSING: POLYESTER.  
 ACTUATOR: POLYAMIDE.  
 MOVING CONTACT: COPPER ALLOY.  
 FIXED CONTACTS/TERMINALS: COPPER ALLOY.

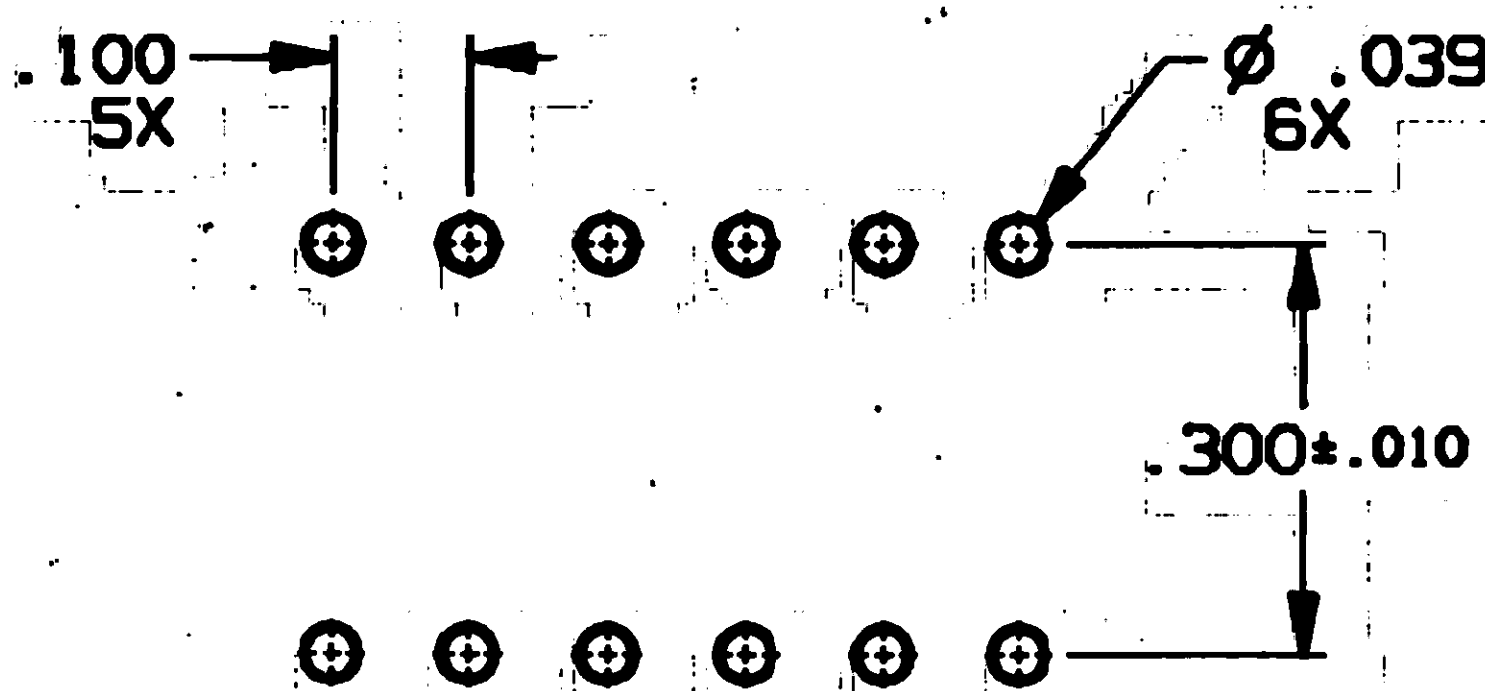
**ELECTRICAL:**  
 CONTACT RATING: NON-SWITCHING: 100 ma @ 50 VDC  
 SWITCHING: 100 ma @ 5 VDC (TYP)  
 25 ma @ 24 VDC (MAX).  
 INITIAL CONTACT RESISTANCE: 100 MILLIOHMS MAX.  
 INSULATION RESISTANCE: 100 MEGOHMS MIN.  
 DIELECTRIC STRENGTH: 500 VDC @ SEA LEVEL.  
 LIFE EXPECTANCY: 2,000 CYCLES.

**MECHANICAL:**  
 ACTUATION FORCE: 700g MAX.  
 ACTUATION TRAVEL: .079.

**ENVIRONMENTAL:**  
 OPERATING TEMPERATURE: +14°F TO +140°F (-10°C TO +60°C).  
 STORAGE TEMPERATURE: -4°F TO +185°F (-20°C TO +85°C).

### 1 NOTES:

- INTERPRET DRAWING PER ASME Y14.5M-1994.
- SWITCH SHOWN IN ON POSITION.



RECOMMENDED HOLE LAYOUT  
 TOLERANCE ±.002 UNLESS OTHERWISE NOTED

## OUTLINE DRAWING

SPECIFICATIONS ARE SUBJECT TO CHANGES WITHOUT NOTICE

THIS IS A C.A.D. GENERATED DRAWING.  
 DO NOT MAKE MANUAL REVISIONS TO MASTER.



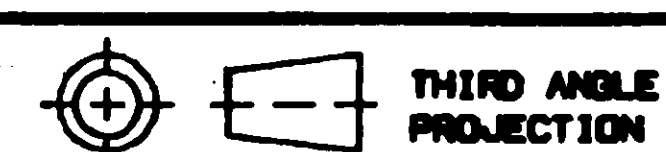
**AUGAT** INC.  
 452 JOHN DIETSCH BLVD.  
 ATTLEBORO FALLS, MASS. 02763

TITLE: **OUTLINE DRAWING**  
**DIPSWITCH**  
**DTS\*\*\***

DWG. NO. **80629** REV. **1**

PRODUCT CODE: **D13**

SCALE: **SHEET 1 OF 2**



THIRD ANGLE  
 PROJECTION

TOLERANCES (EXCEPT AS NOTED)  
 ANGULAR =  
 DECIMAL .XX =  
 DECIMAL .XXX = ±.010  
 DECIMAL .XXXX =

**AUGAT CONFIDENTIAL**  
 This document contains information  
 which is the exclusive property of  
 Augat Inc.  
 Distribution, reproduction or use by  
 others is not permitted without the  
 expressed written consent of Augat  
 Inc.

UNLESS OTHERWISE SPECIFIED  
 DIMENSIONS ARE IN INCHES  
 DO NOT SCALE PRINT

FILE NAME: **80629SIL** DIRECTORY: **SWITCHES/DIPSWITCH**

MATERIAL:  
**SEE SPECIFICATIONS**

FINISH:  
**SEE SPECIFICATIONS**

NEXT ASSY:

ORIGINAL DATE  
 OF DRAWING: **10-19-95**

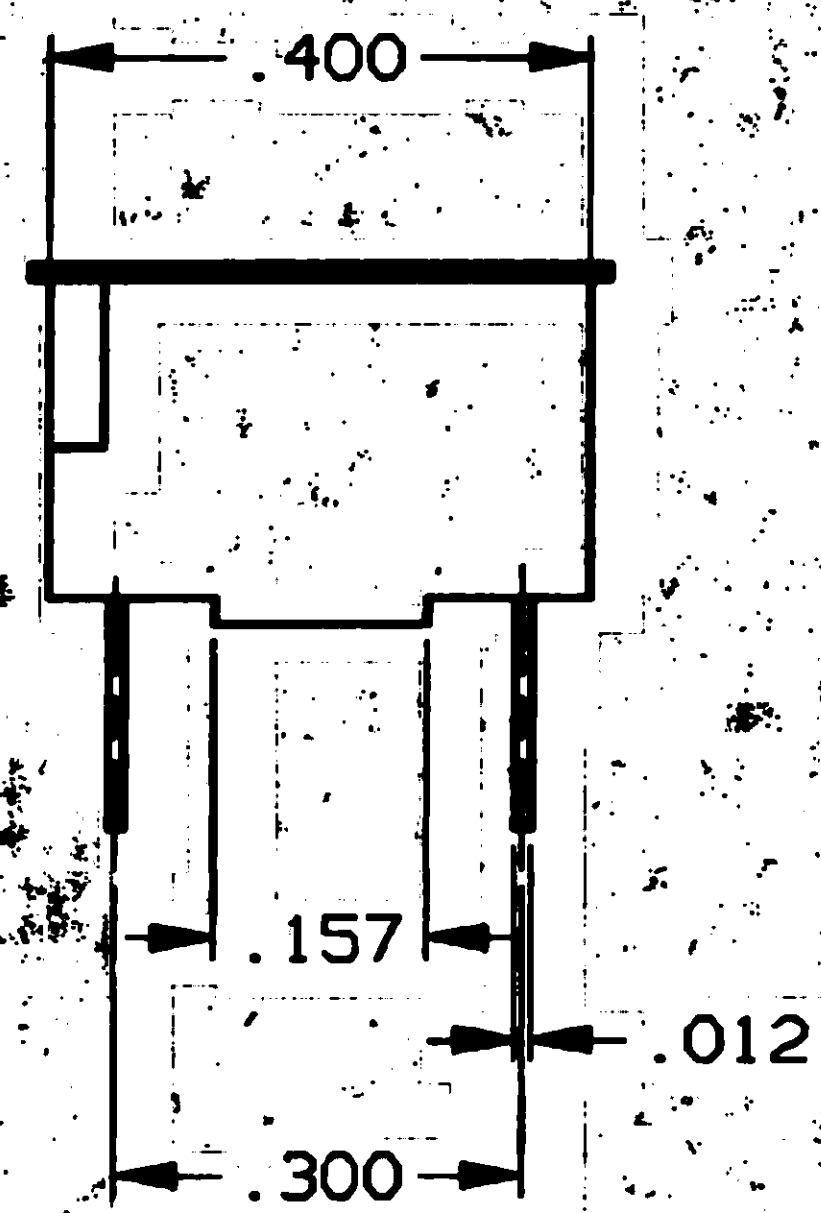
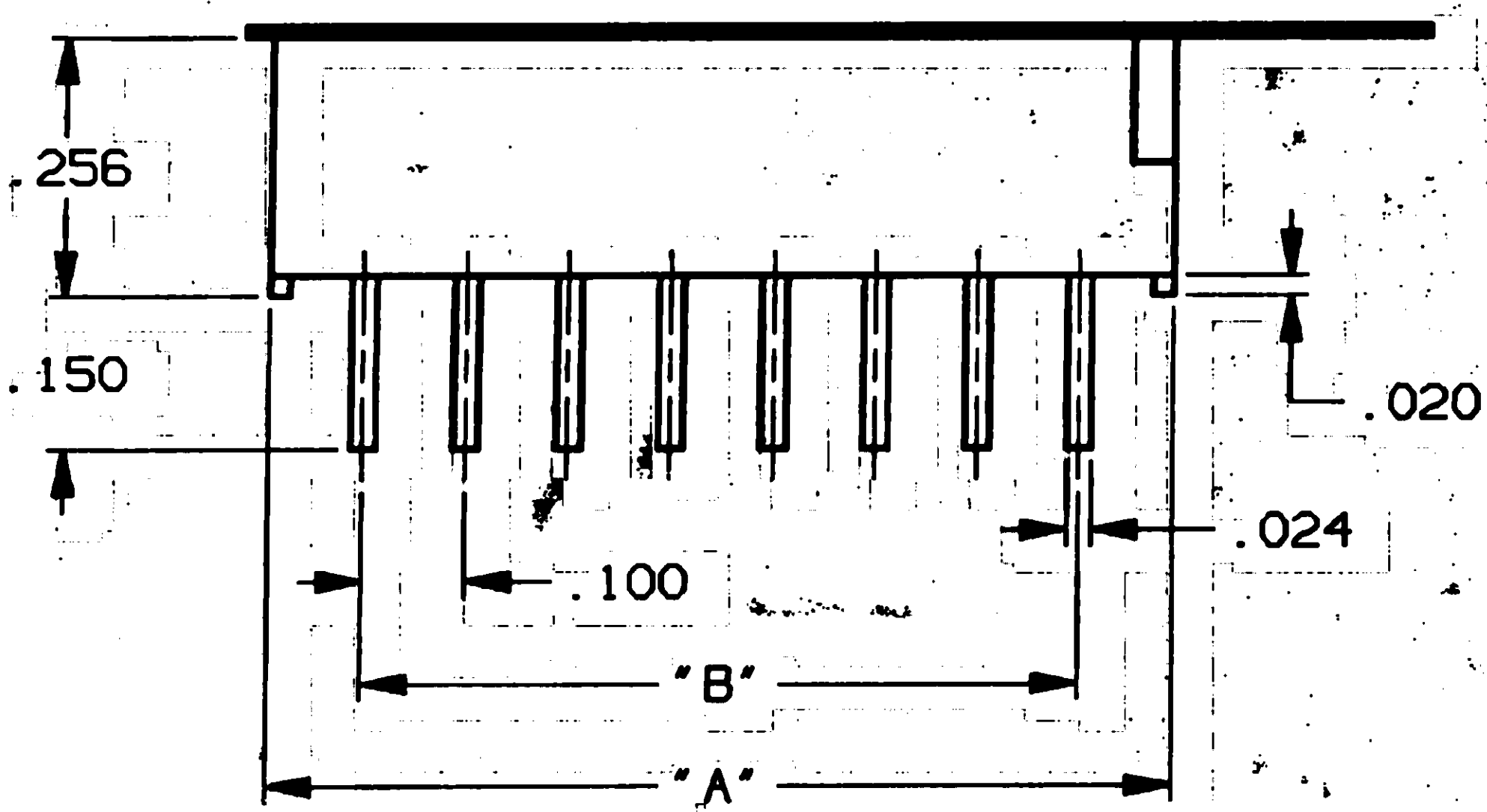
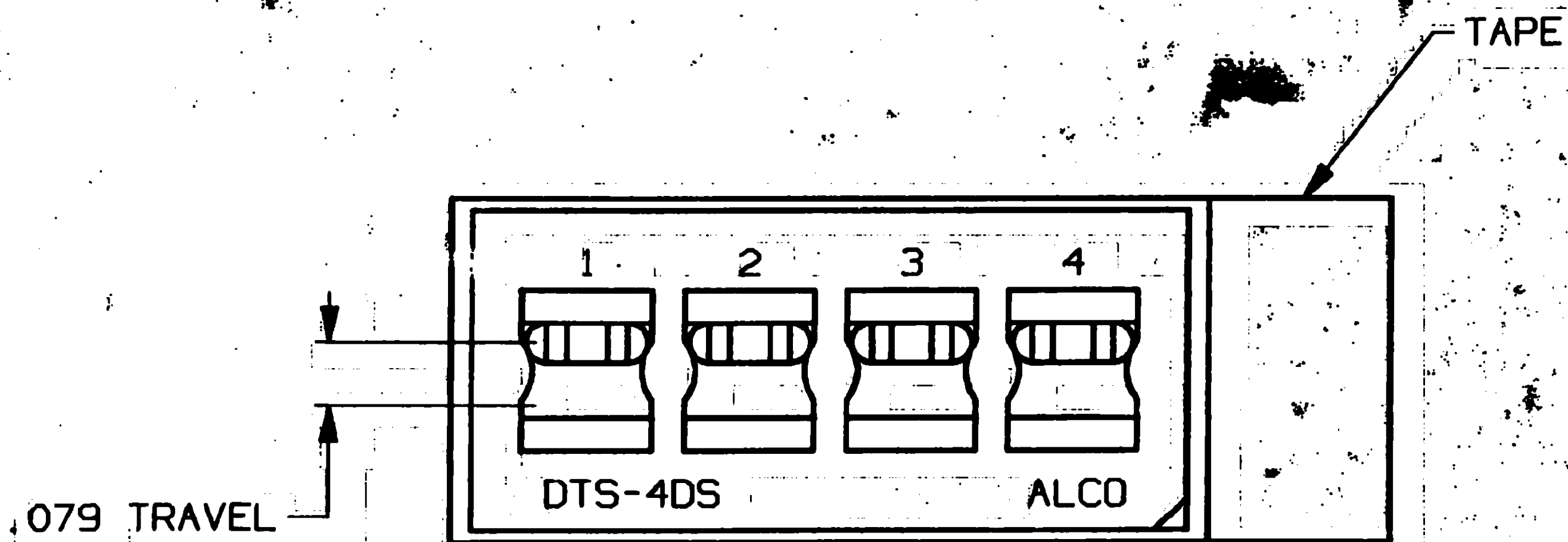
DRAWN: **L. SILVA** DATE: **10-19-95**

CHECKED: DATE:

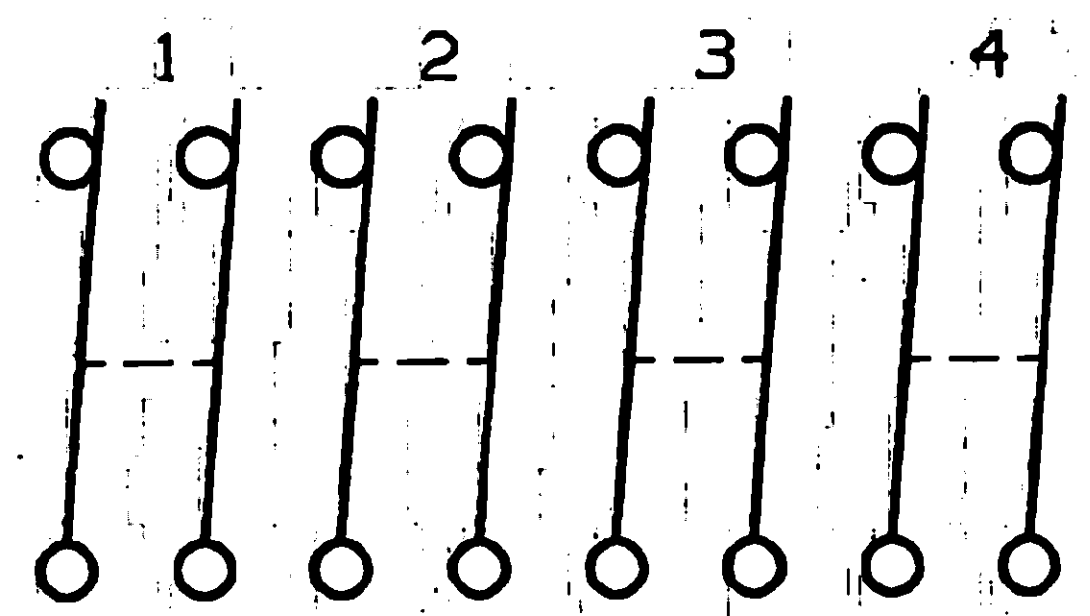
APPROVED: **W. MONTAGUE** DATE: **10-19-95**

CODE IDENT. NO. **91506** DWG. SIZE **C**

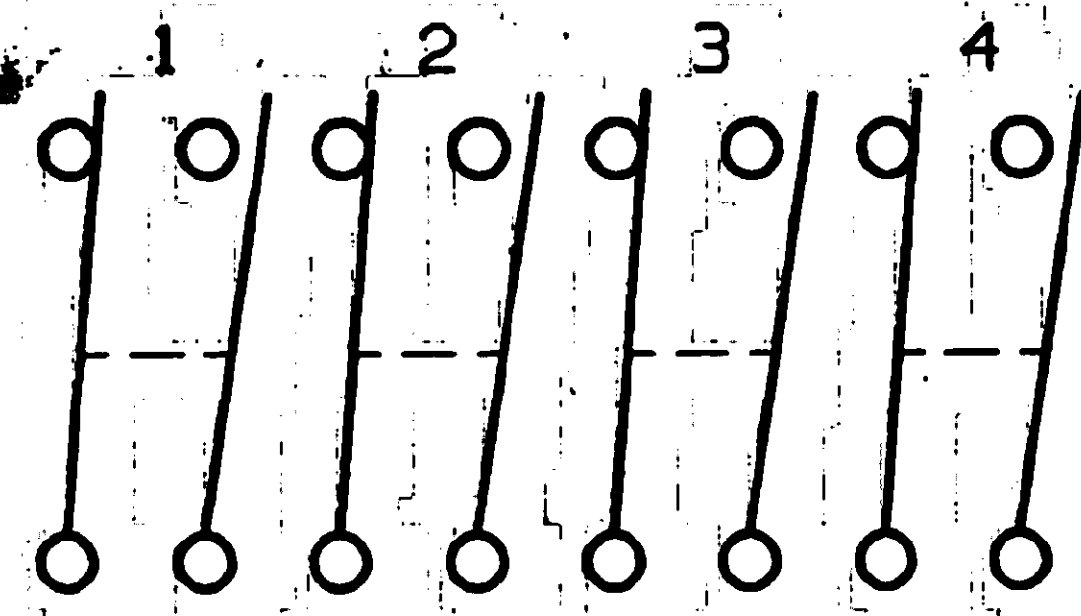
REV	0	1
INITIAL RELEASE		
ESR# 86970		
L.S. 10-19-95		
APP'D: W.M. 10-19-95		
REVISED		
ECOM# 605-96		
L.S. 10-21-96		
APP'D: W.C. 10/21/96		



MODEL	"A"	"B"
DTS1DS/SD	.283	.100
DTS2DS/SD	.484	.300
DTS3DS/SD	.685	.500
DTS4DS/SD	.890	.700
DTS5DS/SD	1.083	.900



CIRCUIT DIAGRAM OF POSITIONS FOR DTS4DS



CIRCUIT DIAGRAM OF POSITIONS FOR DTS4SD

OUTLINE DRAWING			
SPECIFICATIONS ARE SUBJECT TO CHANGES WITHOUT NOTICE			
 THIRD ANGLE PROJECTION	UNLESS OTHERWISE SPECIFIED DIMENSIONS ARE IN INCHES DO NOT SCALE PRINT		ORIGINAL DATE OF DRAWING: 10-19-95
	TOLERANCES (EXCEPT AS NOTED) ANGULAR = DECIMAL .XX = DECIMAL .XXX = ±.010 DECIMAL .XXXX =	FILE NAME: B0629S2L	DIRECTORY: SWITCHES/DIPSWITCH
AUGAT CONFIDENTIAL This document contains information which is the exclusive property of Augat Inc. Distribution, reproduction or use by others is not permitted without the expressed written consent of Augat Inc.	SEE SHEET 1		CHECKED: _____ DATE: _____
	SEE SHEET 1		APPROVED: <i>[Signature]</i> DATE: 10-19-95
	FINISH: SEE SHEET 1	CODE IDENT. NO. 91506	DWG. SIZE C
NEXT ASSY:		DWG. NO. 80629	REV. 1
		PRODUCT CODE: D13	SCALE: SHEET 2 OF 2

THIS IS A C.A.D. GENERATED DRAWING. DO NOT MAKE MANUAL REVISIONS TO MASTER.

REVISIONS  
SEE SHEET #1