

High Voltage 1 REN Ring Generator

Ordering Information

Device	Package Options
	8-Lead SO
HV421	HV421LG

Features

- Processed with HVCMOS® technology
- 4.75V to 9.5V operating supply voltage
- DC to AC conversion
- 1 REN load capacity
- Adjustable ring frequency from 15Hz to 60Hz
- Adjustable converter frequency
- Enable/Disable function

General Description

The Supertex HV421 is a high voltage ring generator designed to drive 1 North American REN (ringer equivalent number) from a 5V source. The HV421 has an internal DC-DC converter which converts the 5V DC supply to a nominal 68V DC connected to the V_{PP} pin. The DC-DC converter frequency of the HV421 is set by an external resistor connected between R_{SW} and V_{DD} . The ringing signal is generated by a high voltage H-bridge which produces two square waves which are 180 degrees from each other. The ringing frequency of the H-bridge is set by an external resistor connected between R_{RING} and V_{DD} .

11

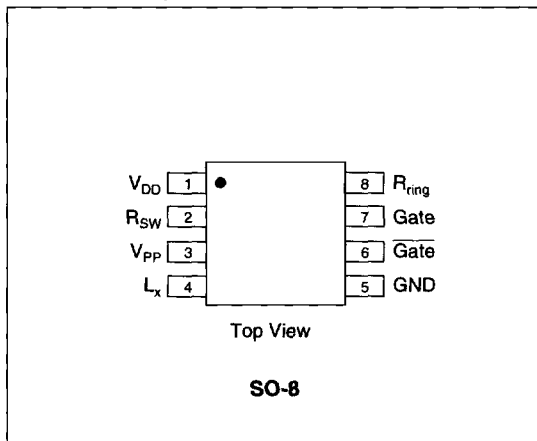
Absolute Maximum Ratings*

Supply Voltage, V_{DD}	-0.5V to +10V
Output Voltage, V_{CS}	-0.5V to +120V
Operating Temperature Range	0°C to +85°C
Storage Temperature Range	-65°C to +150°C
SO-8 Power Dissipation	400mW

Note:

*All voltages are referenced to GND.

Pin Configuration



Electrical Characteristics

DC Characteristics ($V_{DD}=5.0V$, $R_{RING}=30M\Omega$, $R_{SW}=1.3M\Omega$, $L_X=330\mu H$, $T_A=25^\circ C$)

Symbol	Parameter	Min	Typ	Max	Units	Conditions
$R_{DS(ON)}$	On-resistance of switching transistor		3.5	5	Ω	$I=100mA$
I_{DDQ}	Quiescent V_{DD} supply current			50	nA	$R_{SW}=Low$
I_{DD}	Input current going into the V_{DD} pin			300	μA	$V_{IN}=5.0V$. See Figure 1.
I_{IN}	Input current including inductor current		170	220	mA	$V_{IN}=5.0V$. See Figure 1.
V_{PP}	Output voltage on V_{PP}	65	68		V	$V_{IN}=5.0V$. See Figure 1.
F_{RING}	Ring frequency	20	25	30	Hz	$V_{IN}=5.0V$. See Figure 1.
D_{RING}	Ring frequency duty cycle		50		%	
fsw	Switching transistor frequency		35		KHz	$V_{IN}=5.0V$. See Figure 1.
Dsw	Switching transistor duty cycle		88		%	

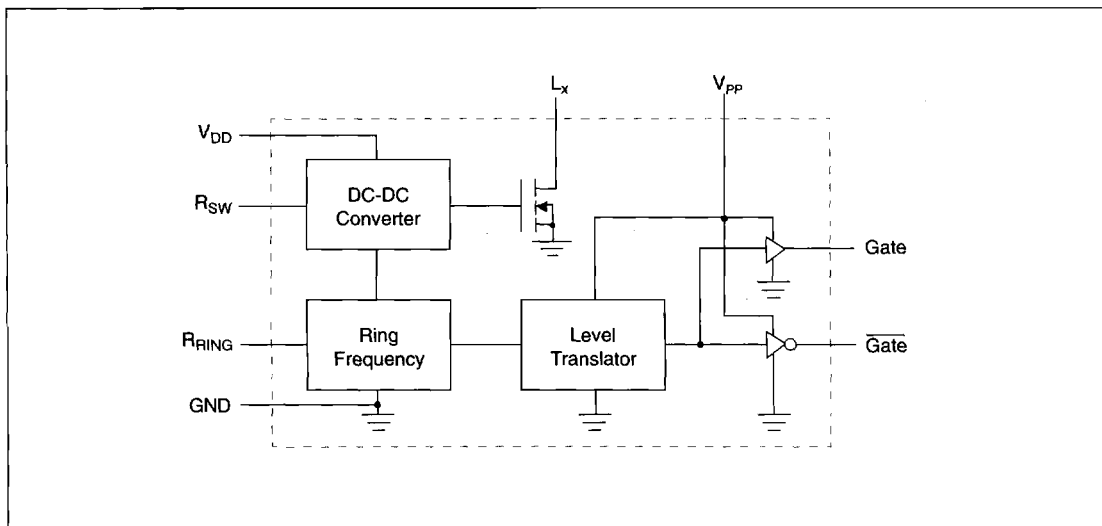
Recommended Operating Conditions

Symbol	Parameter	Min	Typ	Max	Units	Conditions
V_{DD}	Supply voltage	4.75		9.5	V	
T_A	Operating temperature	0		85	$^\circ C$	

Enable/Disable Table

Symbol	Parameter	Min	Typ	Max	Units	Conditions
EN-L	Logic input low voltage	0		0.5	V	
EN-H	Logic input high voltage	$V_{DD}-0.5$		V_{DD}	V	

Block Diagram



Typical Application

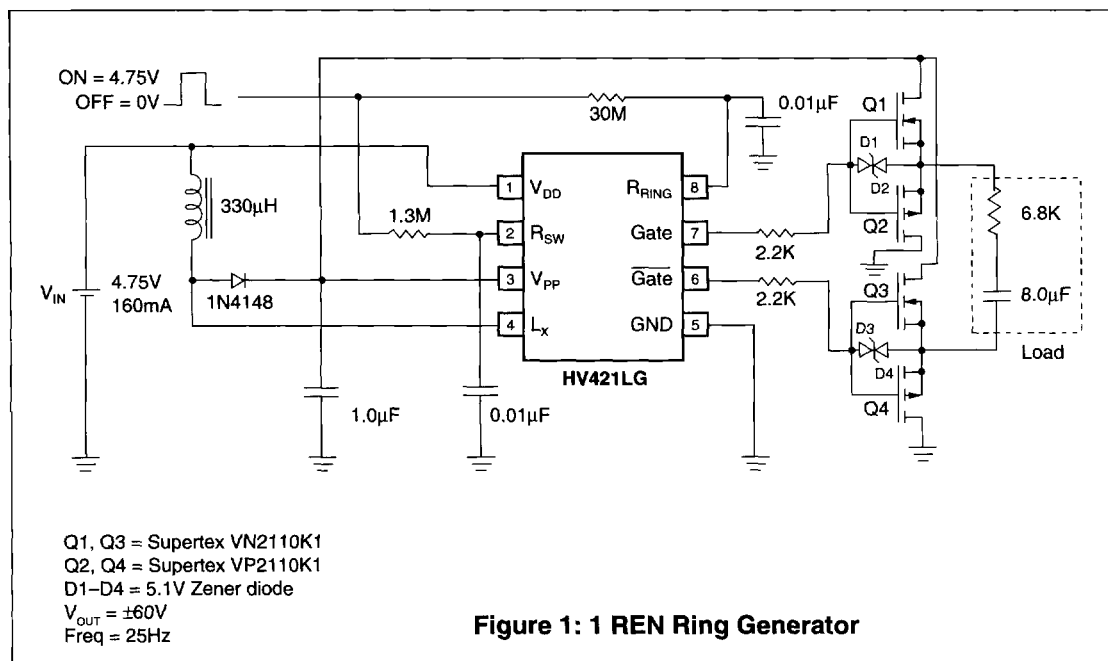


Figure 1: 1 REN Ring Generator

11

Application Description

The Supertex HV421LG is a high voltage 1 REN ring generator. A typical application circuit is shown in Figure 1. There are four basic parts to the circuit; the DC-DC converter, level translation of the ringing frequency, enable/disable function, and an external source follower buffer stage.

DC-DC converter

The DC-DC converter consists of a 330 μ H inductor, 1N4148 diode, 1.0 μ F capacitor and 1.3M Ω resistor. The 1.3M Ω resistor sets the DC-DC converter frequency. Energy is stored in the 330 μ H inductor when the switching transistor is turned on and is released into the 1.0 μ F capacitor when the switch is in the off state. A high voltage DC will develop at V_{PP} which is internally connected to the level translator.

Level translation of the ringing frequency

The ringing frequency is set by a 30M Ω resistor. A low voltage square wave is generated with a nominal frequency of 25Hz. Lower ringing frequencies can be obtained by using resistors greater than 30M Ω . The signal is then level translated to swing from 0V to the V_{PP} voltage. An inverted and a noninverted output are generated (gate and gate bar).

Enable/Disable function

The HV421 can be enabled by connecting the 1.3M Ω and 30M Ω resistors to the same potential as V_{DD} and disabled by connecting them to ground.

External source follower buffer stage

The gate and gate bar are connected to an external source follower stage. Supertex transistors VP2110K1 and VN2110K1 are used for the buffering. Zener diodes clamps across the gates are recommended as a precaution but not required.

The voltage seen by the load is ± 60 V. A 6.8K Ω resistor in series with an 8.0 μ F capacitor is used to simulate 1 North American REN (ringer equivalent number). The main specifications for the Supertex source follower transistors are listed below.

Device	Type	Breakdown Voltage, BV_{DSS}	Gate Threshold Voltage, $V_{GS(th)}$	On-Resistance, $R_{DS(ON)}$	Package Options
VN2110	N-Channel	100V	0.8V to 2.4V	6.0 Ω at $V_{GS}=5V$	TO-92, SOT-23
VP2110	P-Channel	-100V	-1.5V to -3.5V	11 Ω at $V_{GS}=-5V$	TO-92, SOT-23