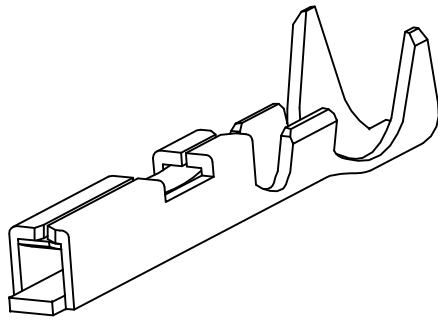


All rights strictly reserved. Reproduction or issue to third parties in any form whatever is not permitted without written authority from the proprietor. Property of FCI. Copyright FCI.

Tous droits strictement réservés. Reproduction ou communication à des tiers interdite sous quelque forme que ce soit sans autorisation écrite du propriétaire. Propriété de c FCI. Droits de reproduction FCI.

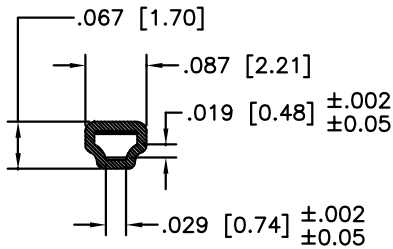
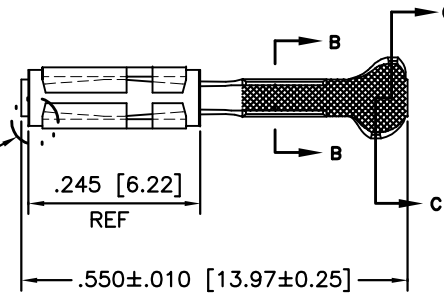
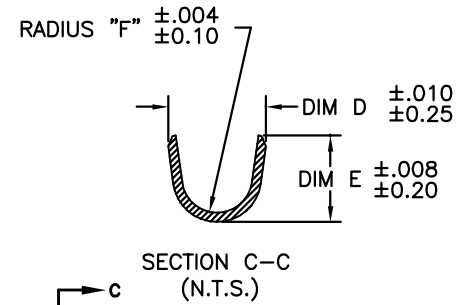
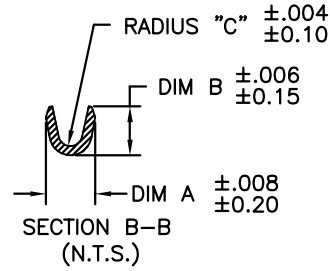
**A**  
**FCI**

PRODUCT NUMBER  
SEE TABLE

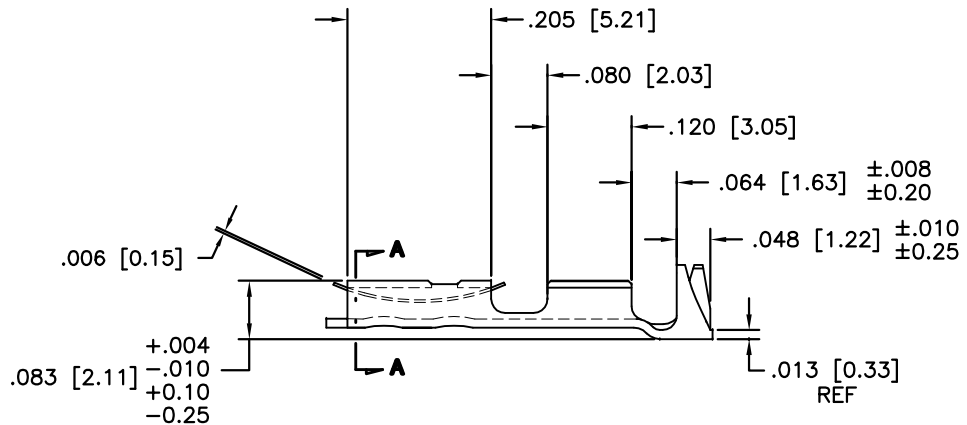


REFERENCE ONLY

SIDES OF SPRING MAY NOT  
EXTEND BEYOND SIDE OF  
TERMINAL MORE THAN .004/.10



SECTION A-A



|                          |          |     |        |  |                       |                  |     |  |        |                             |
|--------------------------|----------|-----|--------|--|-----------------------|------------------|-----|--|--------|-----------------------------|
| mat'l. code<br>SEE NOTES |          |     |        | tolerances unless<br>otherwise specified |                       | CUSTOMER<br>COPY |     | <br>www.fciconnect.com<br><b>MAXI PV™ RECEPTACLE<br/>(IBM)</b> |        |                             |
| ltr                      | ecn no   | dr  | date   | linear                                   | .XX ±.01/.X±.3        | projection       |     |  |        | product family PV TERMINALS |
| C                        | V61811   | EPK | 2/3/97 |  | .XXX ±.005/.XX±.13    | <br>INCH/MM      |     | size   | 213    |                             |
| D                        | V05-0315 | HTB | 4/5/05 | angles                                   | .XXX ±.0020/.XXX±.051 |                  |     | scale  | dwg no | sheet                       |
|                          |          |     |        | dr                                       | E. KROPIEWICKI        | 2/3/97           | 4:1 | A  | 75602  | 1 of 2                      |
|                          |          |     |        | enr                                      | M. SMYK               | 2/3/97           |     |  |        |                             |
|                          |          |     |        | chr                                      | T. BREWBAKER          | 2/3/97           |     |  |        |                             |
|                          |          |     |        | appd                                     | T. BREWBAKER          | 2/3/97           |     |  |        |                             |
| sheet                    | revision | D   | D      |  |                       |                  |     |  |        |                             |
| index                    | sheet    | 1   | 2      |  |                       |                  |     |  |        |                             |

cage code  
**22526**

ACAD

**PDM: Rev:D**

STATUS: **Released**

Printed: Mar 07, 2006

| PRODUCT NUMBER<br>NOTE 4 | WIRE BARREL |           |           | INSULATION BARREL |                     |           |           | MATERIAL & PLATING |                        | REMARKS                                 |             |
|--------------------------|-------------|-----------|-----------|-------------------|---------------------|-----------|-----------|--------------------|------------------------|---|-------------|
|                          | WIRE RANGE  | DIM A     | DIM B     | DIM C             | INSULATION RANGE    | DIM D     | DIM E     | DIM F              | BODY                   |   | SPRING      |
| 75602-001                | 18-20       | .110/2.79 | .110/2.79 | .021/0.53         | .042/1.07-.103/2.62 | .139/3.53 | .123/3.12 | .050/1.27          | 1/4 HD BRASS<br>NOTE 3 | BeCu #25<br>HEAT TREATED<br>GOLD 000030 | REELED      |
| 75602-002                | 22-26       | .070/1.78 | .070/1.78 | .017/0.43         | .036/0.91-.103/2.62 | .139/3.53 | .123/3.12 | .050/1.27          |                        |   | REELED      |
| 75602-003                | 28-32       | .054/1.37 | .058/1.47 | .011/0.28         | .028/0.71-.054/1.37 | .115/2.92 | .110/2.79 | .040/1.02          |                        |   | REELED      |
| 75602-004                | 18-20       | .110/2.79 | .110/2.79 | .021/0.53         | .042/1.07-.103/2.62 | .139/3.53 | .123/3.12 | .050/1.27          |                        |   | LOOSE PIECE |
| 75602-005                | 22-26       | .070/1.78 | .070/1.78 | .017/0.43         | .036/0.91-.103/2.62 | .139/3.53 | .123/3.12 | .050/1.27          |                        |   | LOOSE PIECE |
| 75602-006                | 28-32       | .054/1.37 | .058/1.47 | .011/0.28         | .028/0.71-.054/1.37 | .115/2.92 | .110/2.79 | .040/1.02          |                        |   | LOOSE PIECE |

NOTES :

1. FINE PITCH KNURL INSIDE OF WIRE BARREL AND INSULATION BARREL .002/0.05 - .005/0.13 DEEP.
2. FOR DIMENSIONS OF WIRE BARREL AND INSULATION - SEE TABLE.
- ③ BODY FINISH : 75u" MIN GOLD OVER 50u" NICKEL IN CONTACT AREA. REMAINDER OF PART 30u" MIN GOLD.
- ④ ADD AN LF SUFFIX TO PART NUMBERS FOR PRODUCT THAT MEETS EUROPEAN UNION DIRECTIVES AND OTHER COUNTRY REGULATIONS AS DESCRIBED IN GS-22-008.
5. THIS PRODUCT IS NOT INTENDED TO BE EXPOSED TO MANUFACTURING SOLDERING PROCESSES.

|             |                |                                       |      |               |                       |  |                                       |         |                             |
|-------------|----------------|---------------------------------------|------|---------------|-----------------------|--|---------------------------------------|---------|-----------------------------|
| mat'l. code |                | tolerances unless otherwise specified |      | CUSTOMER COPY |                       | <b>A</b><br><b>FCI</b><br>www.fciconnect.com |                                       |         |                             |
| ltr         | ecn no         | dr                                    | date | linear        | .XX ±.01/.X±.3        | projection                                   | title<br>MAXI PV™ RECEPTACLE<br>(IBM) |         |                             |
| D           |                |                                       |      |               | .XXX ±.005/.XX±.13    |  |                                       | INCH/MM | product family PV TERMINALS |
|             |                |                                       |      | angles        | 0° ±2°                | scale<br>1:1                                 | code<br>213                           |         |                             |
|             |                |                                       |      | dr            | E. KROPIEWICKI 2/3/97 |  |                                       | A       | 75602                       |
|             |                |                                       |      | enr           | M. SMYK 2/3/97        | size   | sheet<br>2 of 2                       |         |                             |
|             |                |                                       |      | chr           | T. BREWBAKER 2/3/97   |  |                                       |         |                             |
|             |                |                                       |      | appd          | T. BREWBAKER 2/3/97   |  |                                       |         |                             |
| sheet index | revision sheet |                                       |      |               |                       |  |                                       |         |                             |