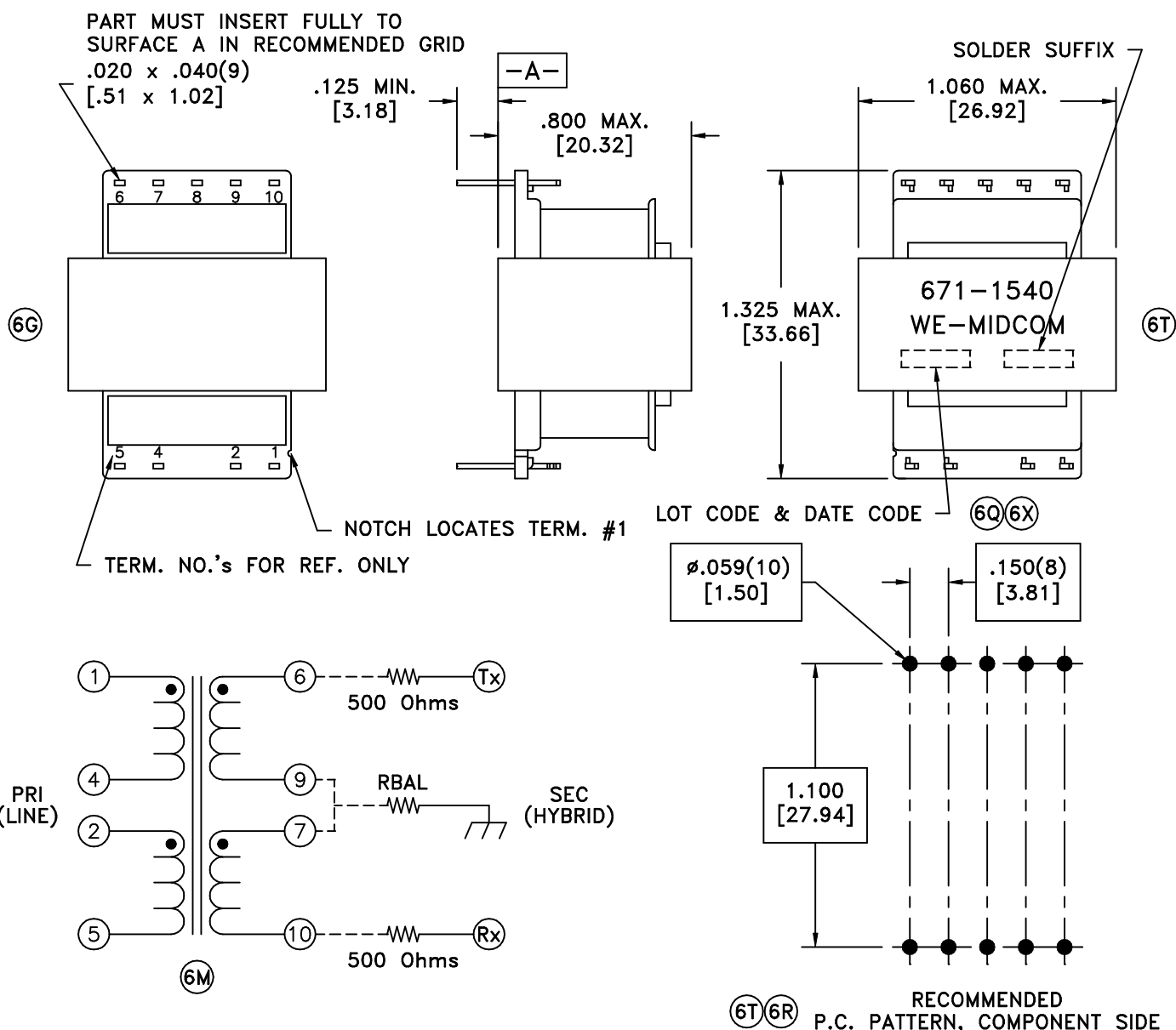


SOLDER SUFFIX	CUSTOMER TERMINAL	RoHS	LEAD(Pb)-FREE	(6X)
	Sn100%	No	No	
LF3	Sn100%	Yes	Yes	



- (6T) **ELECTRICAL SPECIFICATIONS @ 25°C unless otherwise noted:**
- (6M) **IMPEDANCE:** Designed to reflect 600 ohms on the PRI with 500/500 ohm load on SEC.
- (6L)(6T) **LONGITUDINAL BALANCE:** 60dB min., 200 - 4000kHz, per FCC part 68.310.
- D.C. RESISTANCE (@20°C):** PRI, 66.0 ohms ±10%, each half. SEC, 70 ohms ±15%, each half.
- (6M) **FREQUENCY RESPONSE:** ±0.5dB, 200 - 4000Hz (transmit to line).
- (6M) **INSERTION LOSS:** 4.7dB ±0.25, 1000Hz, 65mADC, per IEEE method (transmit to line).
- DIELECTRIC RATING:** 1250VAC for 1 second between PRI-SEC.
500VDC for 1 second between PRI halves.
- (6M) **D.C. IN PRIMARY:** 65mADC max.
- RETURN LOSS:** ERL: 21dB min. } each SEC half
SRL-LO: 15dB min. } loaded with 500 ohm, 65mADC in PRI, Zo = 600 ohms.
- (6M) **TURNS RATIO:** (PRI):(SEC) = 1:1.58, ±1%.
- TRANSYBRID LOSS:** 36dB typ., 1000Hz, 0/65mADC, RBAL = 442 ohms.

Unless otherwise specified:
Tolerances:
Angles: ±1°
Fractions: ±1/64
Decimals: ±.005[.13]

This drawing is dual dimensioned.
Dimensions in brackets are in millimeters.

DRAWING TITLE

**TRANSFORMER
HYBRID**

REVISIONS: SEE SHEET 1

WE Midcom
www.midcom-inc.com

DRAWING NO. **671-1540/-LF3** (6X) REV. 6X/5/06

SCALE --- SHEET 2 OF 5

DWG.# 671-1540/-LF3