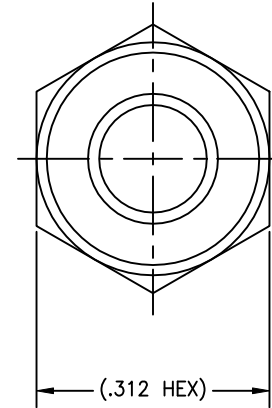
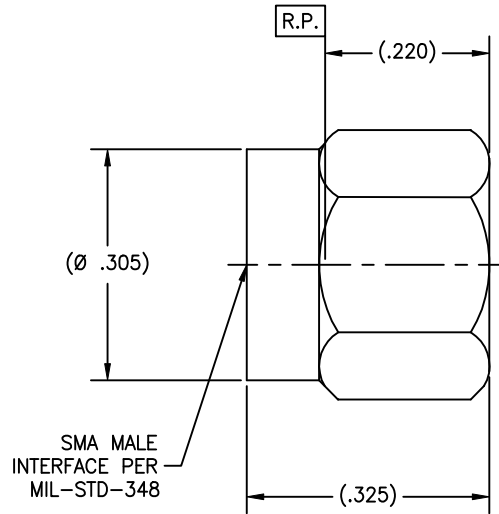


P/N	APPLICABLE NOTE(S)
BASIC	1,2,3
SF	1,2,3
NP	1,2,3

REVISIONS				
ZONE	REV	DESCRIPTION	DATE	BY
-	-	-	-	-



DRAWING NO.	5319	REV.	-
-------------	------	------	---

NOTE(S):

- MATERIALS:
 - BODY & COUPLING NUT: 303 SST PER ASTM A-582.
 - RETAINING RING: BeCu ALLOY C173 PER ASTM B-196.
 - GASKET: SILICON RUBBER PER ZZ-R-765.
- FINISH(ES):
 - BODY & COUPLING NUT (BASIC): GOLD PLATED PER ASTM B-488 OVER NICKEL PLATED PER AMS-QQ-N-290.
 - BODY & COUPLING NUT (SF & NP): PASSIVATE PER ASTM A-967.
 - RETAINING RING & GASKET: NONE
- ALL ITEMS ARE PACKAGED AND SHIPPED UNASSEMBLED.

NOTICE
 THIS DRAWING EMBODIES A CONFIDENTIAL PROPRIETARY DESIGN ORIGINATED BY TENSOLITE COMPANY AND ALL DESIGN, MANUFACTURING, REPRODUCTION, USE AND SALE RIGHTS REGARDING THE SAME ARE EXPRESSLY RESERVED. IT IS SUBMITTED UNDER A CONFIDENTIAL RELATIONSHIP FOR A SPECIFIED PURPOSE AND THE RECIPIENT AGREES BY ACCEPTING THIS DRAWING NOT TO SUPPLY OR DISCLOSE ANY INFORMATION REGARDING IT TO ANY UNAUTHORIZED PERSON TO INCORPORATE IN OTHER PROJECTS ANY SPECIAL FEATURES RELIANT TO THIS DESIGN. ALL PATENT RIGHTS HERETO ARE EXPRESSLY RESERVED BY TENSOLITE COMPANY, LONG BEACH, CALIFORNIA 90815.

- TOLERANCES AND NOTES EXCEPT AS NOTED**
 DIMENSIONS ARE IN INCHES.
 LINEAR .XX ±.015
 .XXX ±.003 ANGULAR ± 1/2°
 FRACTION ± 1/32
- MACHINE FINISH: $\phi 3$ RMS
 - BREAK ALL SHARP EDGES .003 MAX.
 - MACHINED FILLETS .005 MAX.
 - MACHINED SURFACES SQUARE TO RESPECTIVE AXIS WITHIN .005 INCHES PER INCH.
 - MACHINED DIAMETERS CONCENTRIC WITHIN .002 T.I.R.
 - DIMENSIONS TO BE MET BEFORE PLATING.
 - CHAMFER ALL THREADS 45°.
 - THREADS PER 14-28
 - REMOVE FRAVED EDGES ON TEFLON.
 - REMOVE ALL BURRS.

SEE NOTE(S)	-	SEE NOTE(S)	-
MATERIAL	SIZE	SPECIFICATION	PROCUREMENT
NEXT ASSY	Tensolite HIGH PERFORMANCE CABLES & INTERCONNECT SYSTEMS Long Beach, California 90815		
APPROVAL INITIALS	DATE	TITLE SMA MALE STRAIGHT TO Ø .141 SEMI-RIGID CABLE	
DRAWN BY IMG	03.11.02	SCALE	SUB-DIRECTORY/FILENAME
CHECKED		8/1	OL_
QUALITY		SHEET 1 OF 1	
ENGINEERING	ATV	08.29.02	REV.
SIZE	CAGE CODE	DRAWING NO.	REV.
C	30990	5319	-