

TABLE 1				
DASH NO	CONN TYPE	IMPD (OHMS)	MATERIAL	ASSEMBLE PER
-1	PL220	50	1-0442-013	TAI-A118
-2	CJ220		1-0443-013	
-3	PL240		1-0446-013	
-4	CJ240		1-0445-013	
-5	BJ226		1-0472-013	TAI-123
-6	BJ229		1-0473-013	
-7	BJ246		1-0046-013	
-8	BJ249		1-0047-013	
-9	LPL220	75	1-0468-013	TAI-D118
-10	LPL240		1-0041-013	
-11	PL223		1-0009-013	
-12	LPL223		1-0050-013	TAI-D118
-13	PL240S		1-0446-013	TAI-A118
-14	LPL240S		1-0041-013	TAI-D118
-15	UBJ229		1-0488-013	TAI-123
-16	UCJ220		1-0494-013	TAI-D118
-17	UCJ240		1-0496-013	
-18	UBJ226		1-0489-013	
-19	LPLR220		1-0504-013	TAI-221
-20	LPLFF220		1-0517-013	TAI-223
-21	UBJ220		1-0515-013	TAI-D118

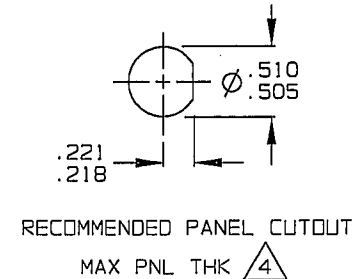
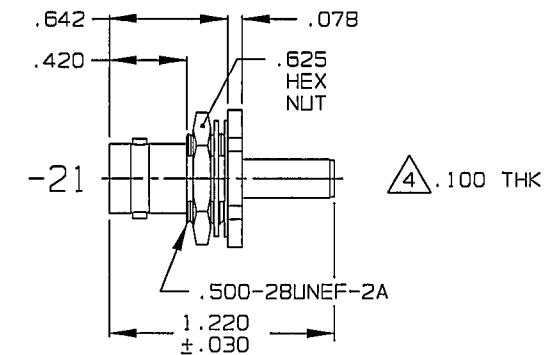
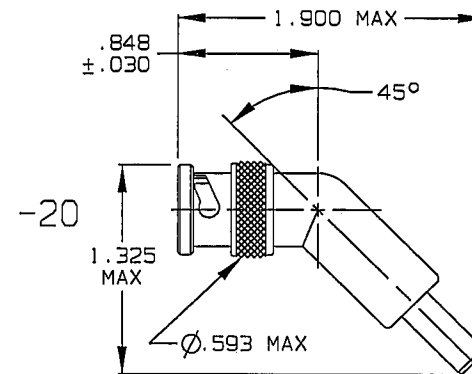
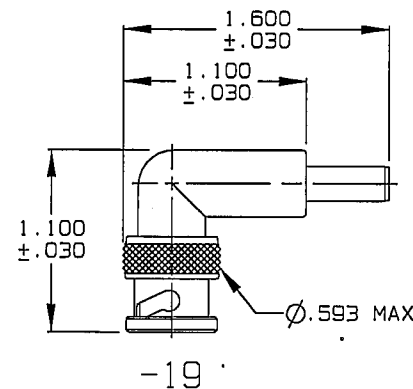
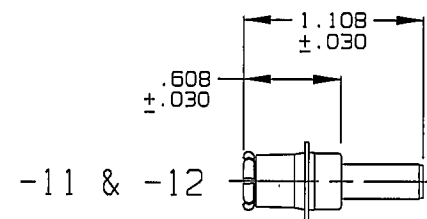
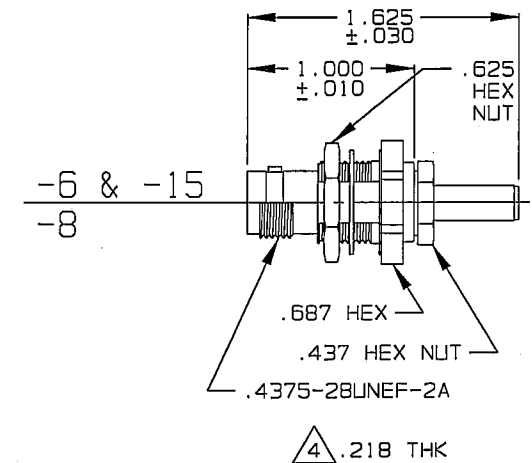
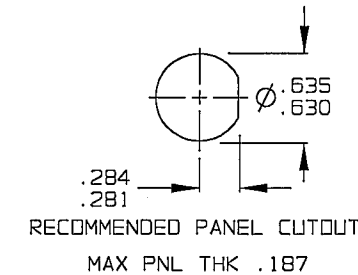
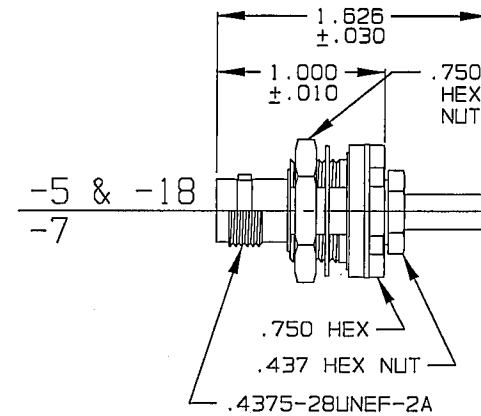
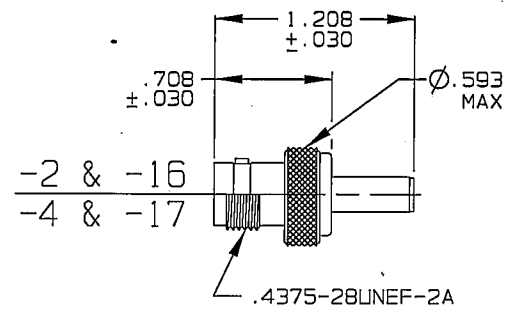
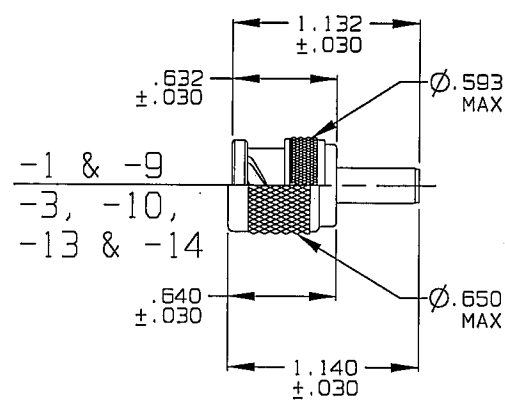
CENTER CONTACT CRIMP TOOLING			
CONTACT TYPE	MILITARY 8 POINT INDENTER	COMMERCIAL HEX	COMMERCIAL 8 POINT INDENTER
50 OHM PIN	M22520/1-01 BASIC TOOL WITH TURRET HEAD SELECTOR NO. 6	TEI CT4L BASIC TOOL WITH TEI CD3-3 DIE, CLOSURE C (.068 HEX)	N/A
50 OHM SOCKET	M22520/1-01 BASIC TOOL WITH TURRET HEAD SELECTOR NO. 6	TEI CT4L BASIC TOOL WITH TEI CD3-3 DIE, CLOSURE C (.068 HEX)	N/A
75 OHM PIN	N/A	TEI CT4L BASIC TOOL WITH TEI CD3-3 DIE, CLOSURE D (.042 HEX)	TEI 010-0097 8 PT 010-0098 12 PT
75 OHM SOCKET	N/A	TEI CT4L BASIC TOOL WITH TEI CD3-3 DIE, CLOSURE D (.042 HEX)	TEI 010-0088

DATA CONTAINED IN THIS DOCUMENT IS PROPRIETARY TO TROMPETER ELECTRONICS, INC. AND SHALL NOT BE DISCLOSED, COPIED OR USED FOR PROCUREMENT OR MANUFACTURE WITHOUT EXPRESS WRITTEN PERMISSION OF TROMPETER ELECTRONICS, INC.

REVISIONS		105-1539	SH 1
REV	DESCRIPTION	DATE	APPROVED
B	REVISED PER ECO 14341	11-27-01	AM.

**RED INDICATES ORIGINAL**

CRIMP SLEEVE TOOLING		
CONNECTOR TYPE	MILITARY HEX	COMMERCIAL HEX
50 OR 75 OHM CONNECTORS	M22520/5-01 BASIC TOOL WITH M22520/5-41 DIE, CLOSURE A (.290 HEX)	TEI CT4L BASIC TOOL WITH TEI CD3-3 DIE, CLOSURE B (.290 HEX)



2. EXAMPLE OF COMPLETE PART NO:

105-1539 - 1  
BASIC PART NO. DASH NO (SEE TABLE 1)

1. 50 & 75 OHM FULL CRIMP COAXIAL BNC/TNC CABLE PLUGS/RECEPTACLE/INSULATED & NONINSULATED BULKHEAD MOUNT CABLE RECEPTACLE/PUSH-ON PLUG & 75 OHM BNC/TNC/PUSH-ON FULL CRIMP COAXIAL CABLE PLUG FOR PIC WIRE NO. S59 HEC

REPLACE CRIMP SLEEVE 8-1613-5 WITH CRIMP SLEEVE 8-1613-19

INTERPRET DRAWING PER MIL-STD-100 DIMENSIONS ARE IN INCHES AND INCLUDE FINISH THICKNESS UNLESS OTHERWISE SPECIFIED	TOL: UNLESS SPECIFIED .XX .XXX ±.005 .XXXX	
DRAWN: AAH CHECKED: [Signature] QUALITY: [Signature] DATE: 11-14-01 DATE: 11-15-01 DATE: 11-27-01 DATE: 11/19/01	MATERIAL: FINISH: TITLE: 220/240 SERIES-S59 HEC	
NEXT ASSY	CAGE CODE: B 14949	DRAWING NO.: 105-1539
CAD FILE NO. 105-1539B	SCALE: NONE	DATE: 3/29/94
DO NOT SCALE DWG	SHEET: 1 OF 1	REV. B