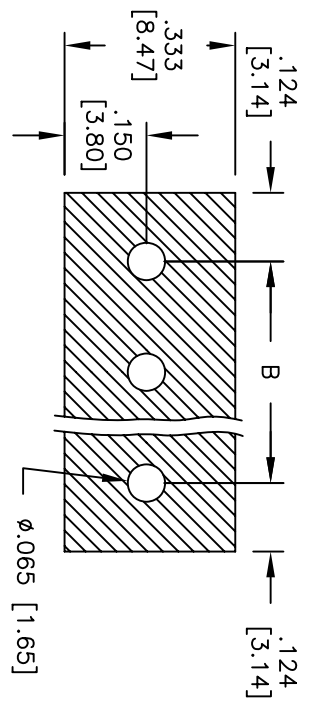
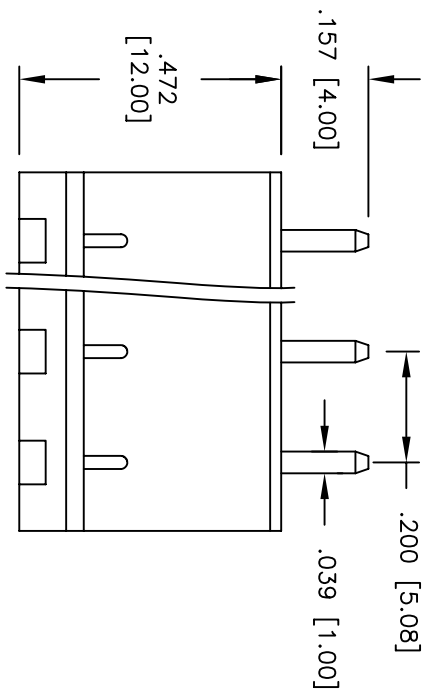
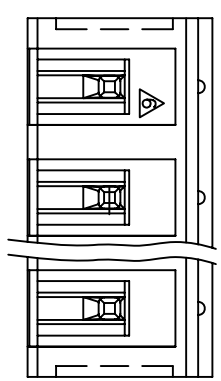
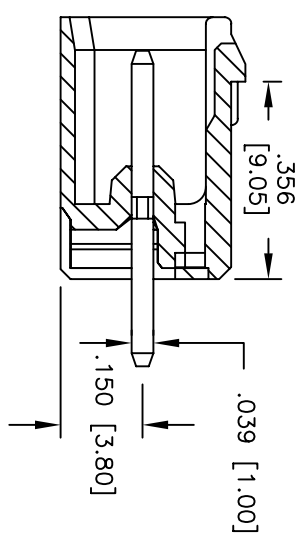
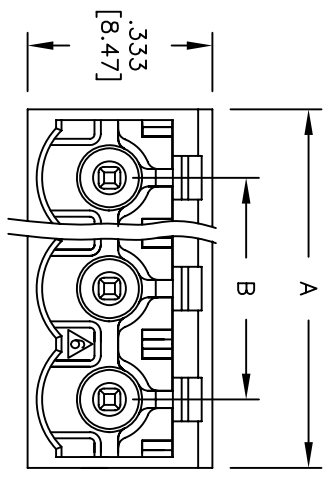


APPROVED: _____
 DATE: _____ TITLE: _____

Rev	AWO #	Description	Date	Appr
-		RELEASED	9/10/08	
A		REVISED DIM.	11/12/08	



Recommended PCB Layout



SPECIFICATIONS:
 Material: Insulator: PA66, rated UL 94V-0
 Insulator color: Green
 Contact: Copper, Tin plated.
 Electrical:
 Operation voltage: 300 VAC max
 Current rating: 15 Amps max per Pole
 Contact resistance: 20 mohms max
 Insulation resistance: 500 Mohms min @ DC500V
 Dielectric withstanding voltage: 2000 VAC for 1 minute
 Environmental:
 Operating temperature: -40°C to +105°C
 Lead free, RoHS compliant.
 Recommended soldering temp: 235°C for 5 sec.

Positions: 02 thru 25
 A = .200 [5.08] x No. of Positions + .047 [1.20]
 B = .200 [5.08] x No. of Spaces

UNLESS OTHERWISE SPECIFIED
 ALL DIMENSIONS ARE MM [INCHES]
 TOLERANCES: EXCEPT AS NOTED
 INCHES Holes

.X	± .10	ØXX	± .10
.XX	± .020	ØXXX	± .015
.XXX	± .015	ØXXXX	± .010

APPROVALS: _____ DATE: _____
 DRAWN: DY 9/10/08
 CHECKED: _____
 APPROVED: _____

ADAM TECH
 909 Rahway Avenue, Union, NJ 07083
 Phone: 908-687-5000 Fax: 908-687-5710

**TERMINAL BLOCK, SOCKETS FOR PLUGGABLE,
 VERTICAL, .200" [5.08] PITCH**

SIZE: X PART NO.: EBP-XX-D-C REV: A
 REF: S0002AT SCALE: NTS SHEET 1 OF 1

