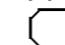
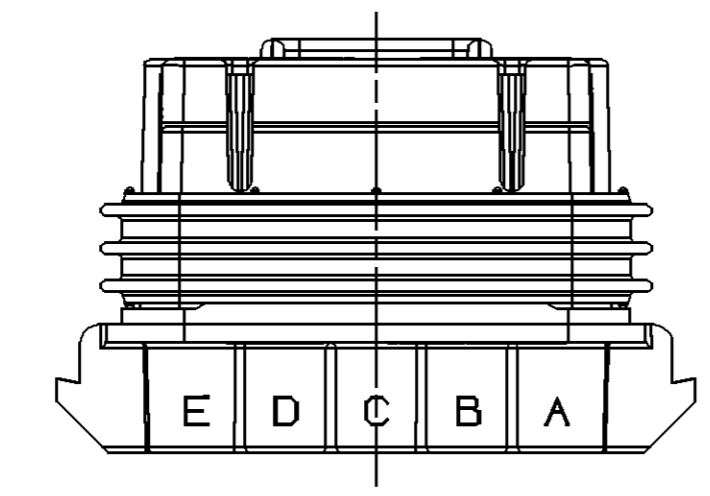
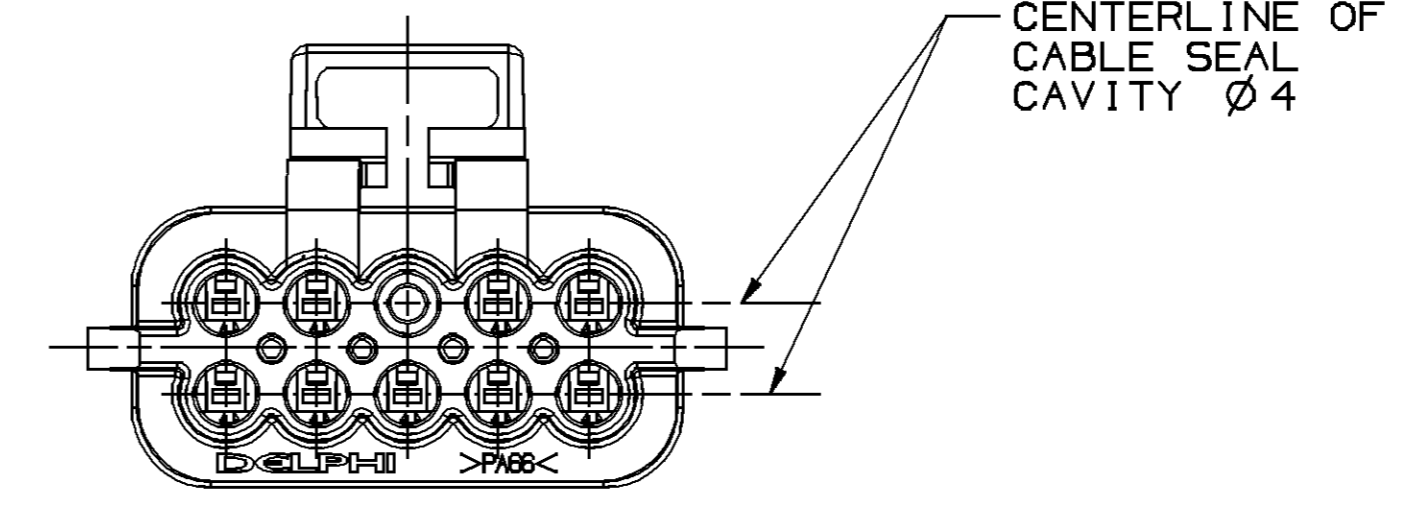
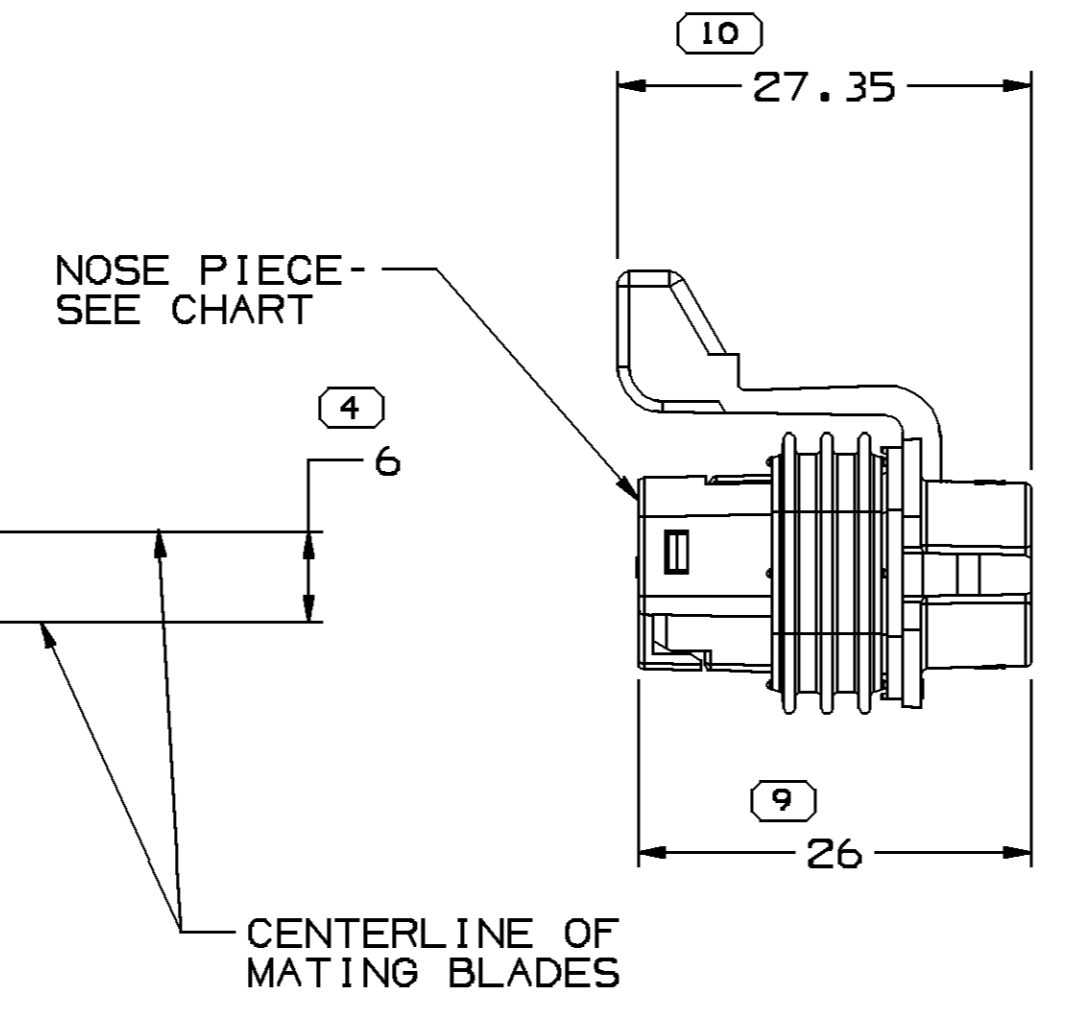
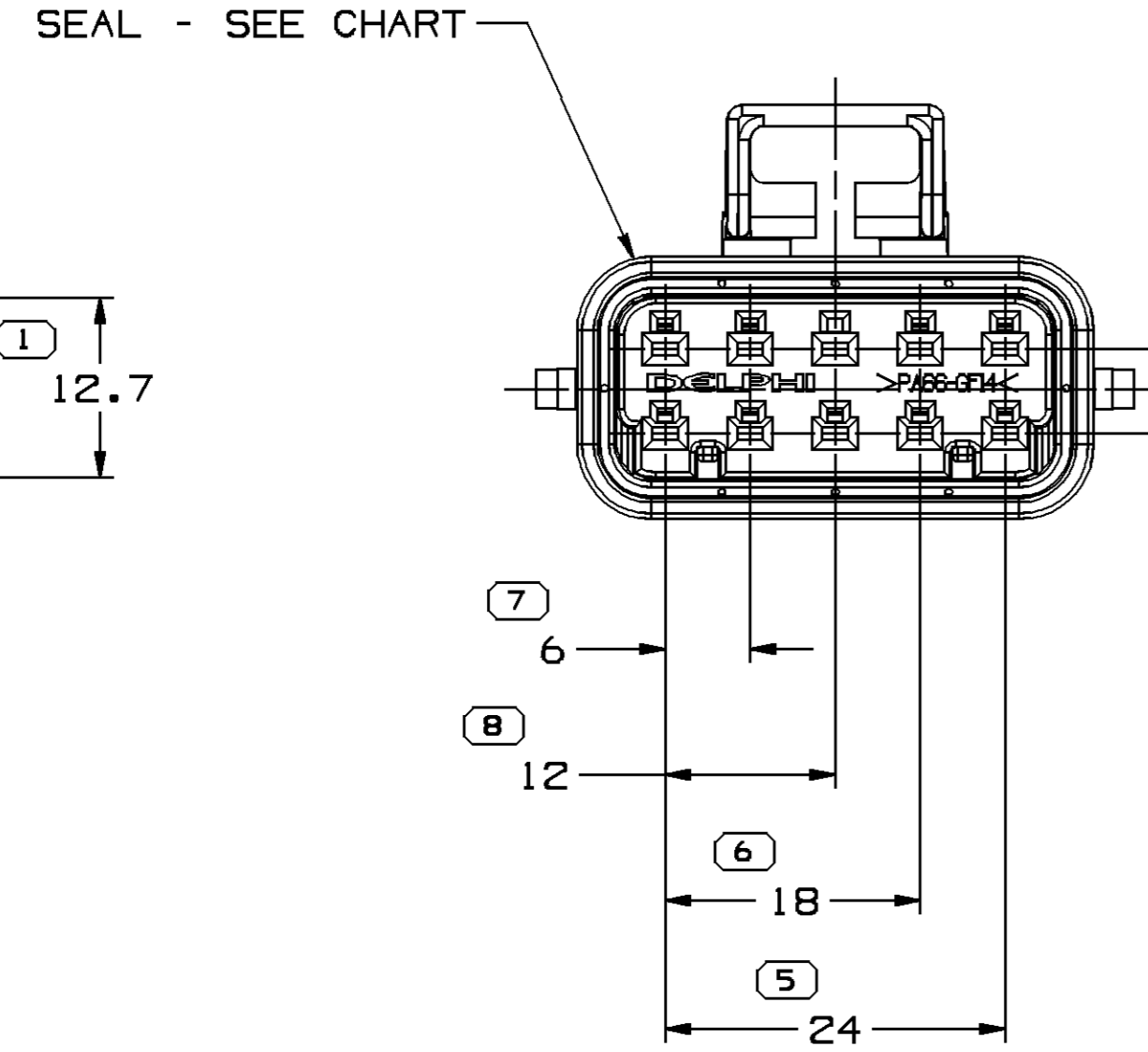
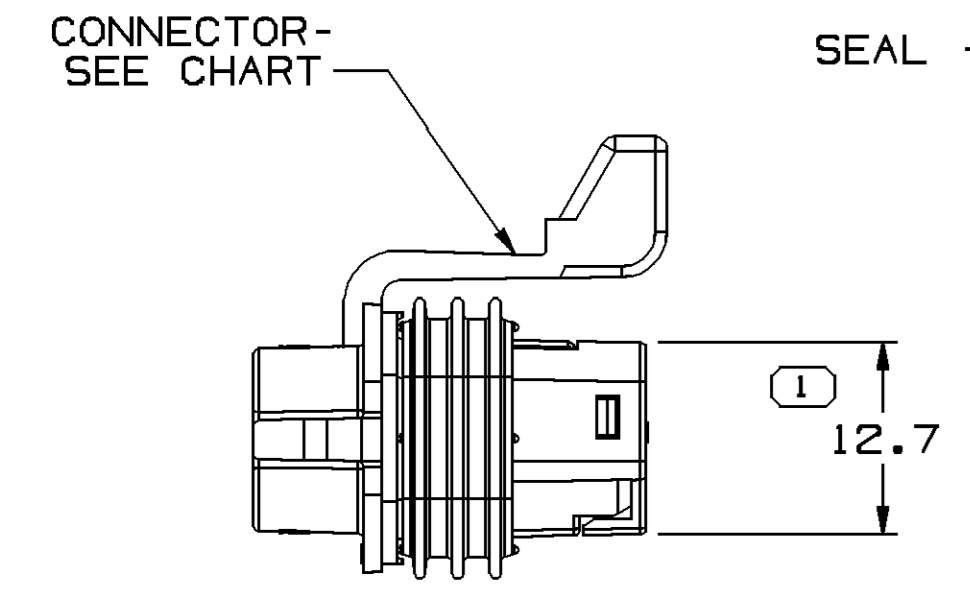
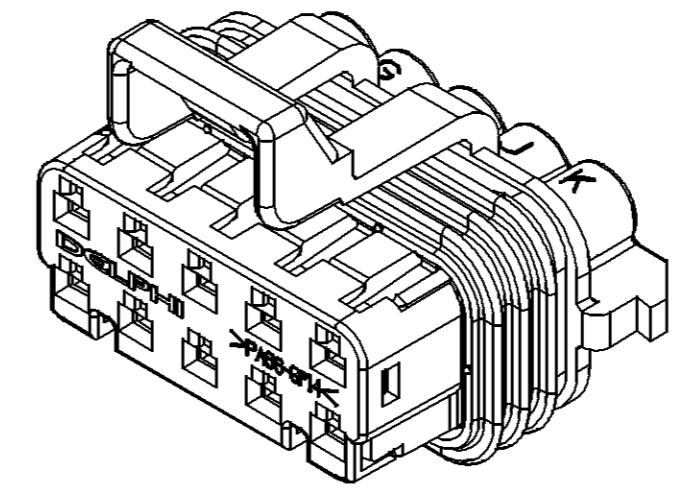
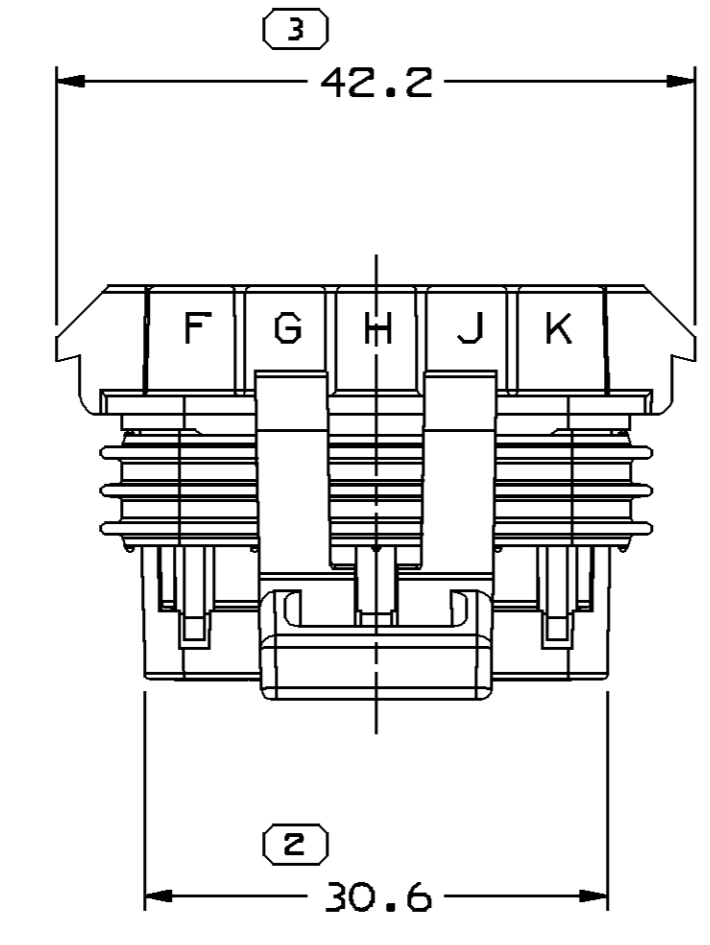


SYMBOL DEFINITION		MISSING SYMBOLS	
A DIMENSION WITHOUT AN INSPECTION REPORT SYMBOL  DOES NOT REQUIRE INSPECTION. IT MAY BE CONTROLLED ON THE INDIVIDUAL COMPONENT DRAWING.	TOTAL NO OF INSPECTIONS REQUIRED	NO MISSING SYMBOL NUMBER	10
	LAST NO. USED		10

DWG STATUS				ZONE	REVISION HISTORY	AUTH	DR	APVD1	APVD2
DATE	STG	REV	N/P						
20JUN02	R	01	-	-	15439641 & 15439642 - RELEASED	226735	CJP	CJP	MC
25JUL02	R	02	-	-	15439649 & 15441329 - RELEASED 15439641 & 15439642 - UPDATED PDM ATTRIBUTES	228244	ECB	JAA	MC
150C02	R	03	-	-	15439649 - UPDATED PDM ATTRIBUTES	230372	CJP	CJP	MC
24MR03	R	04	-	-	15439641-42 - ADDED NOTE SHOWING BLOCKED CAVITY	238669	MAC	MAC	MC
28MR05	R	05	-	-	ALL PARTS - NOSE PIECE LABEL WAS PLR PRE-STAGE POSITION; NOSE PIECE IN CHART WAS PLR & UPDATED PART GRAPHICS	266062	GPS	JVM	MJC
16DE05	R	06	-	-	ALL ACTIVE PARTS - ADDED SHIPPING COVER TO NOTE 2 AND MATING INFORMATION, REMOVED DELPHI LOGO NOTE AND ISO VIEWS TYPE 102, 103 AND 104	275583	TLD	TLD	MC
22AUG06	R	07	-	-	ALL PARTS - REVISED NOTE 4	283921	TLD	TLD	MJC



NOTES

- UNLESS OTHERWISE SPECIFIED AND/OR INDICATED: DIMENSIONS ARE TO FACE OF VIEW SHOWN AND AUTOMATICALLY ROUNDED BY COMPUTER FOR INSPECTION (SEE MATH MODEL FOR PRECISE DIMENSIONS). FOR ALL OTHER DIMENSIONS NOT SHOWN BUT REQUIRED FOR TOOL BUILD, SEE MATH MODEL FOR PRECISE TOOL PATH DATA.
- THIS PART ACCEPTS THE FOLLOWING COMPONENTS OR EQUIVALENT: CAVITIES TO ACCEPT 12191818 TERMINAL CABLE SEAL - 12191226 CONNECTOR POSITION ASSURANCE LOCK - 12020833 TERMINAL POSITION ASSURANCE LOCK - 15436371 SHIPPING COVER - 12129589
- SEALING CODE 3 - DESIGN WILL PASS SALT FOG AND IMMERSION TEST AFTER CONDITIONING AS SPECIFIED IN ESA-644 (WEATHER-PACK), ESA-710 (METRI-PACK), ESA-650 (UNDERHOOD MICRO-PACK), C-4006 (WORLD CONNECTOR), ETC WHEN MATED TO MATING PART OR EQUIVALENT
- PARTS SHOWN ON THIS DRAWING MATE WITH ASSEMBLIES SHOWN ON TAXI 15318070.

15441329	01	AC		104	15441328	M3592012 PA66 HS IM GRA LT	12077436	15436370	-
15439649	01	AD		103	15439648	M3592001 PA66 HS IM BLK	12077436	15436370	-
15439642	01	AE		102	15436376	M3592012 PA66 HS IM GRA LT	12077436	15436370	H
15439641	01	AE		101	15436369	M3592001 PA66 HS IM BLK	12077436	15436370	H
PART NO	REV	N/P	STATUS	TYPE	CONNECTOR	MATERIAL SPECIFICATION AND COLOR	SEAL	NOSE PIECE	BLOCKED CAVITY

DIMENSIONAL RANGE (MM)		CHART ET	
FROM	TO		
> 0	> 20	> 30	> 70
> 20	> 30	> 70	> 100
> 30	> 70	> 100	> 150
> 70	> 100	> 150	> 200
> 100	> 150	> 200	> 250
> 150	> 200	> 250	> 300
> 200	> 250	> 300	> 400

DWG TYPE: PART DRAWING

STYLE: [Symbol]

VOLUME (C/P): [Symbol] DISTR CODE: D

UNLESS OTHERWISE SPECIFIED THIS DOCUMENT IS IN ACCORDANCE WITH ASME Y14.5M-1994 AS MODIFIED BY THE 01 GLOBAL DIMENSIONING AND TOLERANCING ADDENDUM - 1997. ALL GEOMETRIC TOLERANCES AND RELATED DATUMS APPLY RFS. RULE #1 (PERFECT FORM AT MMC) DOES NOT APPLY WHEN RELATIONSHIP BETWEEN FEATURES IS ESTABLISHED BY ORIENTATION OR LOCATION TOLERANCES. SEPARATE POSITION CALLOUTS MAY BE GAGED SEPARATELY, REGARDLESS OF DATUM REFERENCE. ALL DIMENSIONS ARE IN MILLIMETERS

REFERENCE: [Symbol]

THIRD ANGLE PROJECTION

DO NOT SCALE USE MATH DATA

UNIGRAPHICS

DELPHI

DELPHI PACKARD ELECTRIC SYSTEMS
WARREN, OH

DR	DATE
APVD1 CHUCK PAPAS	20JUN02
APVD2 CHUCK PAPAS	20JUN02
APVD3 M. CULP	21JUN02
APVD4	
APVD5	

SUBSTANCES OF CONCERN AND RECYCLED CONTENT PER DELPHI 10949001

MATERIAL: SEE CHART

DRAWING NAME: TAXI ASM CONN F 0T 150 SLD

DRAWING NUMBER: 15439640

SIZE	SCALE	FRAME NO	SHEET NO	STG	REV	N/P
A1	2:1	1 OF 1	1 OF 1	R	07	-