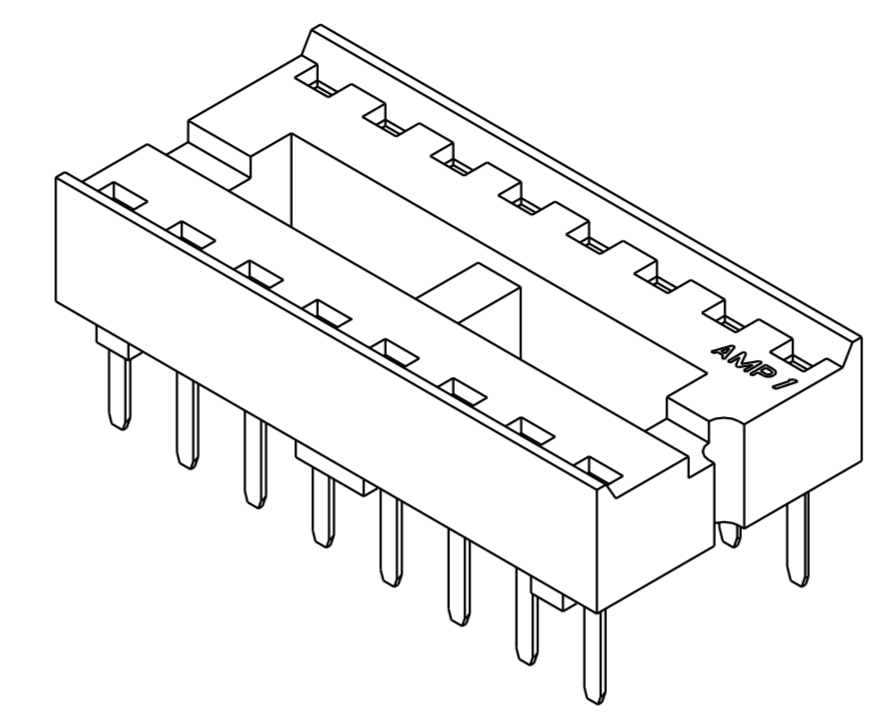
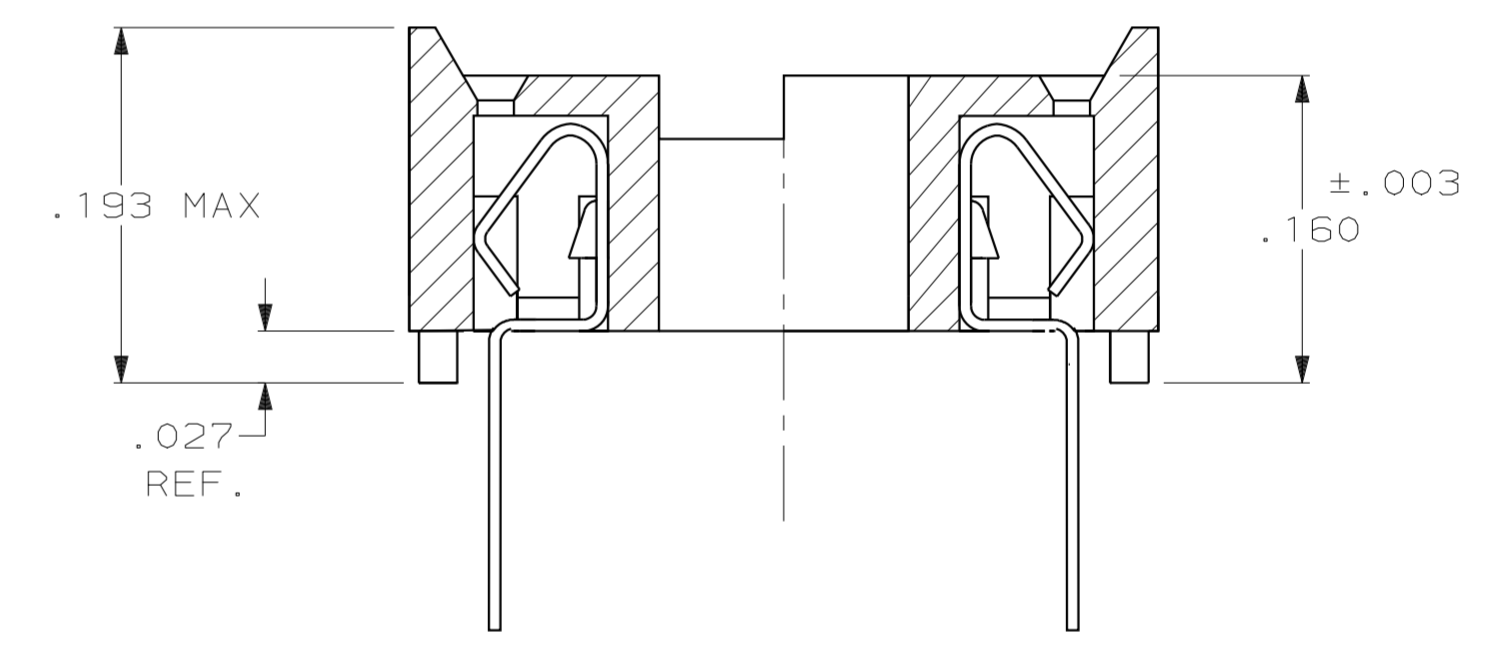
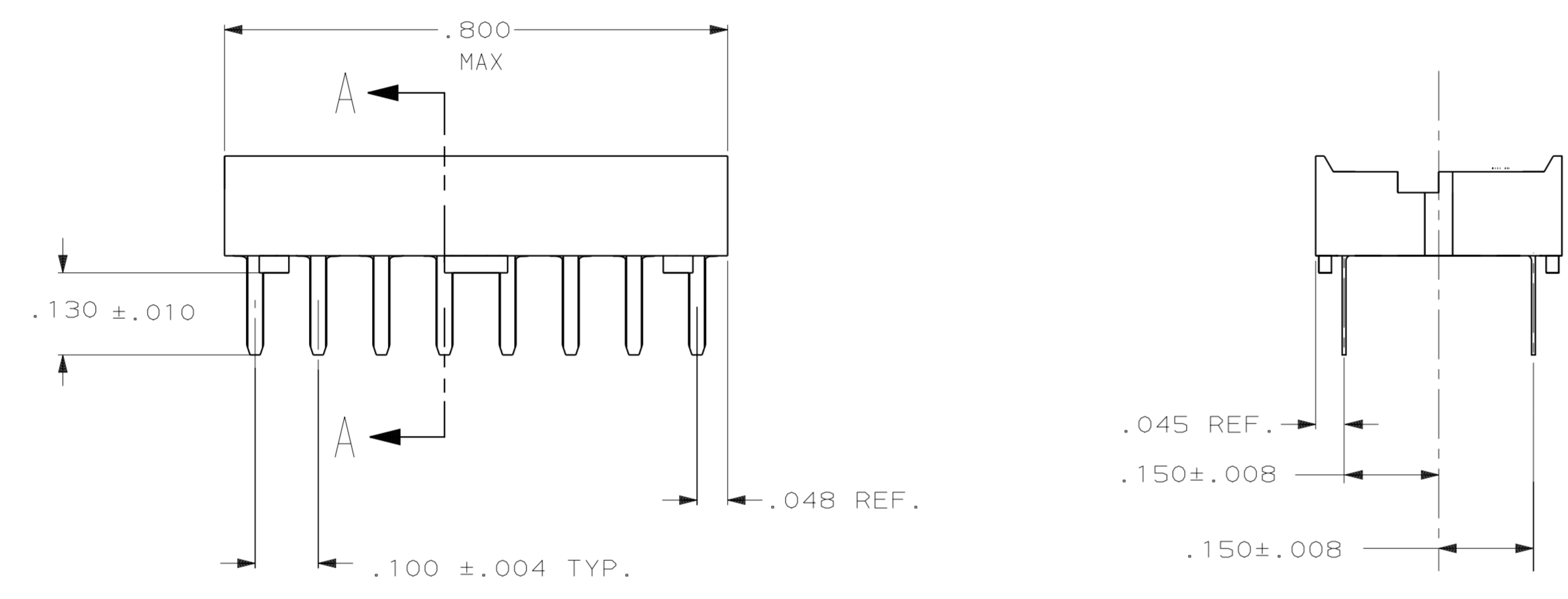
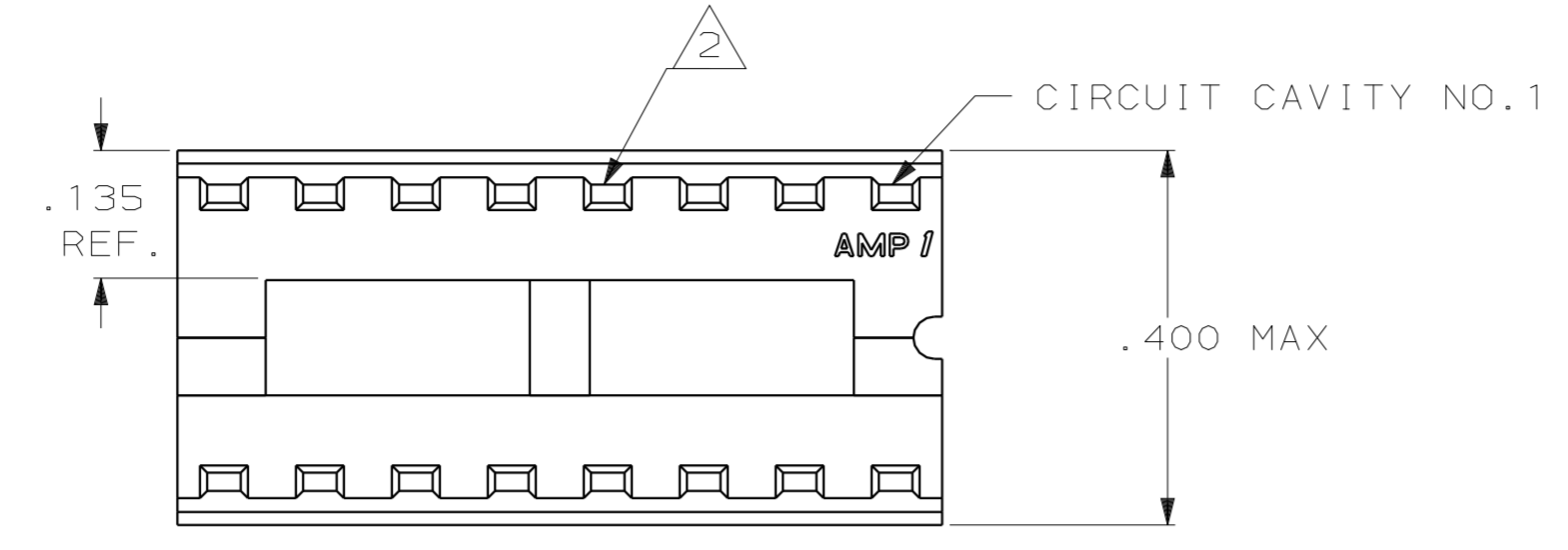


LOC		DIST		P		F		ZONE		LTR		REVISIONS			
AD	0											DESCRIPTION	DATE	APPD	
												L	REVISED & REDRAWN PER AG-3209	2-21-94	AM
												M	OBSOLETE -21 AND -23 PER EC 063C-146-99	18 APR 00	SR

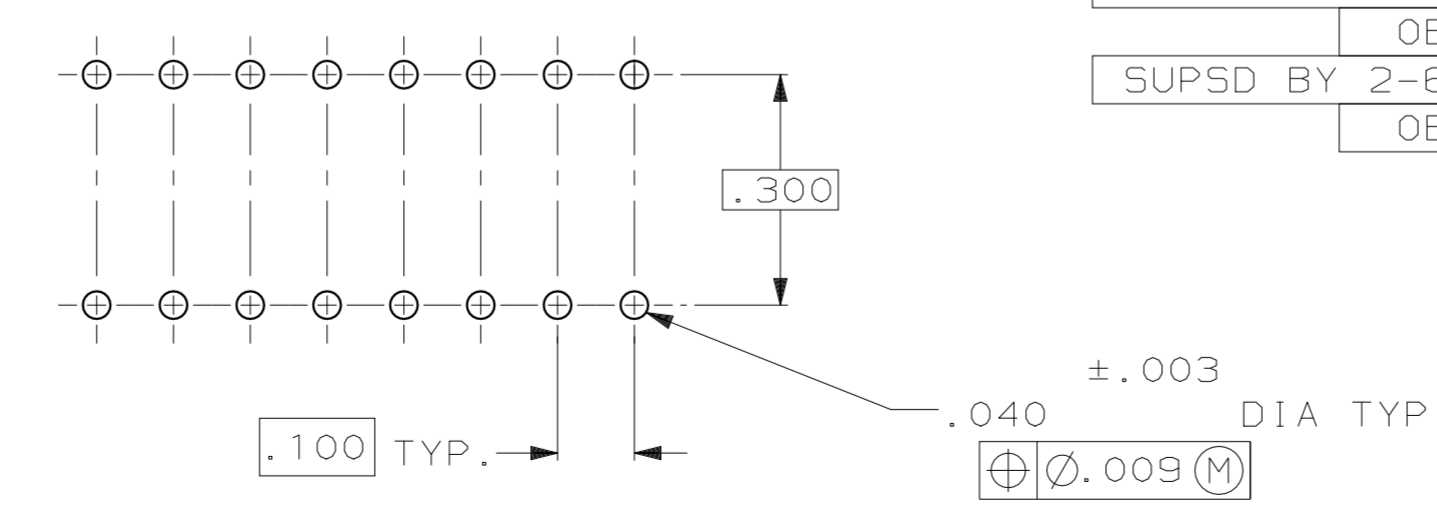


- 1. PRODUCT MEETS PRODUCT SPEC 108-1074.
- 2. ACCEPTS .008-.015 THK. X .030 WIDE RECEPTACLE LEAD.
- 3. SOCKETS LOADED IN TUBES FOR AUTOMATIC INSERTION.



SECTION A-A
 SCALE 10:1

SUPERSEDED



RECOMMENDED MOUNTING HOLE PATTERN
 SCALE 4:1

SUPSD BY 2-641600-5	.006 THK. BRASS, TIN-PLATED	GLASS FILLED THERMOPLASTIC, 94V0, BLACK	2-643292-5
SUPSD BY 2-641600-4	.006 THK. PH. BRZ., .000015 MIN Au OVER .000030 MIN Ni	GLASS FILLED THERMOPLASTIC, 94V0, BLACK	2-643292-4
OBSOLETE	.006 THK. PH. BRZ., TIN-PLATED	GLASS FILLED THERMOPLASTIC, 94V0, BLACK	2-643292-3
SUPSD BY 2-641600-2	.006 THK. BeCu, .000030 MIN Au OVER .000030 MIN Ni	GLASS FILLED THERMOPLASTIC, 94V0, BLACK	2-643292-2
OBSOLETE	.006 THK. BeCu, TIN-PLATED	GLASS FILLED THERMOPLASTIC, 94V0, BLACK	2-643292-1
CONTACT: MATERIAL AND FINISH		HOUSING: MATERIAL AND FINISH	PART NO.

DO NOT SCALE PRINT. UNLESS SPECIFIED DIMENSIONS IN mm [INCHES] TOLERANCES ON: 2 PLC DEC ± 3 PLC DEC ± .005 ANGLES ± -	DR 7-31-89 M. CYRUS CHK 8-1-89 R. MILLER APPD 8-1-89 R. WHITNEY APPD 8-1-89 J. GRAY
MATERIAL	PRODUCT SPEC
FINISH	APPLICATION SPEC
SEE TABLE	SEE TABLE
WEIGHT	

AMP AMP Incorporated Harrisburg, PA 17105-3608	
NAME SOCKET ASSEMBLY, DIP DIPLOMATE SL, 16 POSN	
SIZE D	CAGE CODE 00779
DRAWING NO C-643292	SHEET 1 OF 1
SCALE 5:1	

THIS DRAWING IS A CONTROLLED DOCUMENT FOR AMP INCORPORATED. IT IS SUBJECT TO CHANGE AND THE CONTROLLING ENGINEERING ORGANIZATION SHOULD BE CONTACTED FOR THE LATEST REVISION.