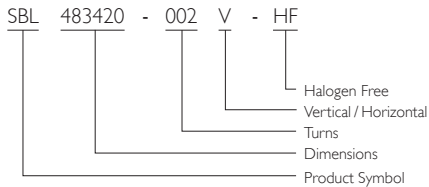


SMD
Balun Transformers

SBL Series



PRODUCT IDENTIFICATION



■ Tolerance: J = ±5%, K = ±10%, L = ±15%, M = ±20%,
P = ±25%, N = ±30%, Y = min

FEATURES

Halogen Free products

Shielded construction

APPLICATIONS

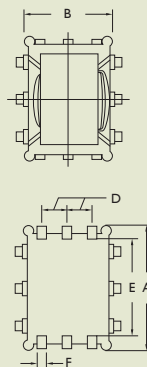
IEEE 1394, USB and so forth data acquisition applications

Filter for I/O EMI countermeasure

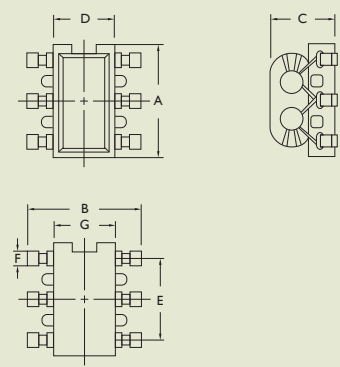
SHAPES AND DIMENSIONS

Unit: mm

SBL483420



SBL504232



TYPE	A	B	C	D	E	F	G
SBL483420	4.8	3.4	2.0 max	1.0	3.7	0.4	---
SBL504232	4.2	5	3.2 max	2.0	3.0	0.5	2.7

ELECTRICAL CHARACTERISTICS

PART NO.	WINDING TURNS (T)	OPERATING FREQUENCY RANGE (Hz)	INSERTION LOSS (dB)
SBL483420-002V-HF	2.0	100M~600M	3.0 max
SBL504232-002V-HF	2.0	50M~1G	4.5 max
SBL504232-003V-HF	3.0	30M~1G	4.0 max
SBL504232-004V-HF	4.0	20M~1G	4.0 max
SBL504232-1R5V-HF	1.5	50M~600M	5.0 max
SBL504232-2R5V-HF	2.5	50M~600M	4.0 max
SBL504232-3R5V-HF	3.5	50M~500M	1.0 min
SBL504232-4R5V-HF	4.5	50M~450M	1.2 min
SBL504232-5R5V-HF	5.5	50M~400M	1.5 min
SBL504232-002V-HF	2.0	50M~800M	6.5 max