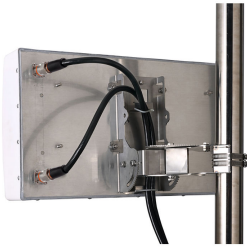


CMAX-DM30-43-V53



Cell-Max™ Low PIM Directional High Capacity Venue MIMO Antenna, 698–960 MHz and 1710–2700 MHz, 30-Deg, 4.3-10

Product Classification

Product Type	Over-the-head stadium antenna
Product Brand	Cell-Max™

General Specifications

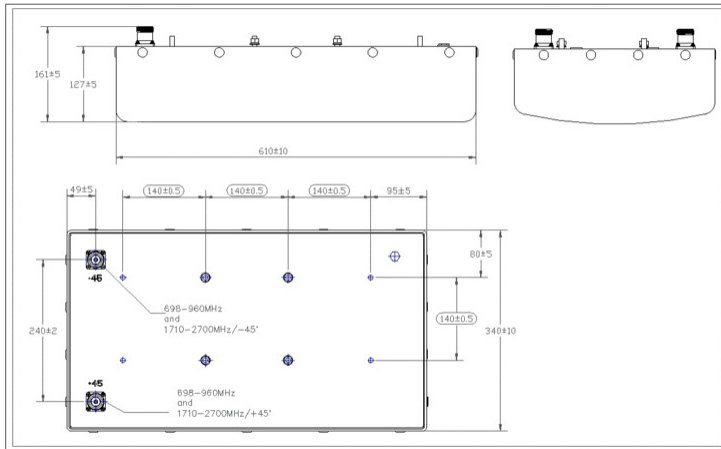
Application	Indoor/Outdoor
Antenna Type	Directional
Antenna Array Characteristic	MIMO 2x2
Polarization	±45°
Color	White (RAL 9016)
Number of Ports	2
Radome Material	ABS, UV resistant
RF Connector Interface	4.3-10 Female

Dimensions

Width	340.4 mm 13.402 in
Depth	127 mm 5 in
Length	609.6 mm 24 in

CMAX-DM30-43-V53

Outline Drawing



Electrical Specifications

Electrical Note	Values typical, unless otherwise stated
Impedance	50 ohm
Lightning Protection	dc Ground

Electrical Specifications

Frequency Band, MHz	698-800	800-960	1695-1880	1850-1990	1920-2180	2200-2700	2300-2360
Gain, dBi	11.1	11.8	10.9	11	11.3	12	12
Beamwidth, Horizontal, degrees	34	30	34	33	31	26	28
Beamwidth, Vertical, degrees	68	61	70	66	65	65	64
Horizontal Sidelobe, dB	13	13	15	15	15	15	15
Front-to-Back Total Power at 180° ± 30°, dB	22	22	27	27	27	27	27
CPR at Boresight, dB	20	20	17	17	17	20	20
Isolation, Cross Polarization, dB	25	25	25	25	25	25	25
VSWR Return loss, dB	1.5 14.0	1.5 14.0	1.5 14.0	1.5 14.0	1.5 14.0	1.5 14.0	1.5 14.0
PIM, 3rd Order, 2 x 20 W, dBc	-153	-153	-153	-153	-153	-153	-153
Input Power per Port, maximum, watts	200	200	200	200	200	200	200

Mechanical Specifications

CMAX-DM30-43-V53

Wind Loading @ Velocity, maximum	686.0 N @ 216 km/h (154.2 lbf @ 216 km/h)
Wind Speed, maximum	216 km/h 134.216 mph

Environmental Specifications

Operating Temperature	-40 °C to +60 °C (-40 °F to +140 °F)
Relative Humidity	Up to 100%
Ingress Protection Test Method	IEC 60529:2001, IP65
Vibration Test Method	ASTM D4169 IEC 60068-2-6

Packaging and Weights

Width, packed	350 mm 13.78 in
Depth, packed	210 mm 8.268 in
Length, packed	890 mm 35.039 in
Included	Mounting bracket
Packaging quantity	1
Weight, gross	12.4 kg 27.337 lb
Weight, net	7 kg 15.432 lb

Regulatory Compliance/Certifications

Agency	Classification
CHINA-ROHS	Below maximum concentration value
REACH-SVHC	Compliant as per SVHC revision on www.commscope.com/ProductCompliance
ROHS	Compliant

